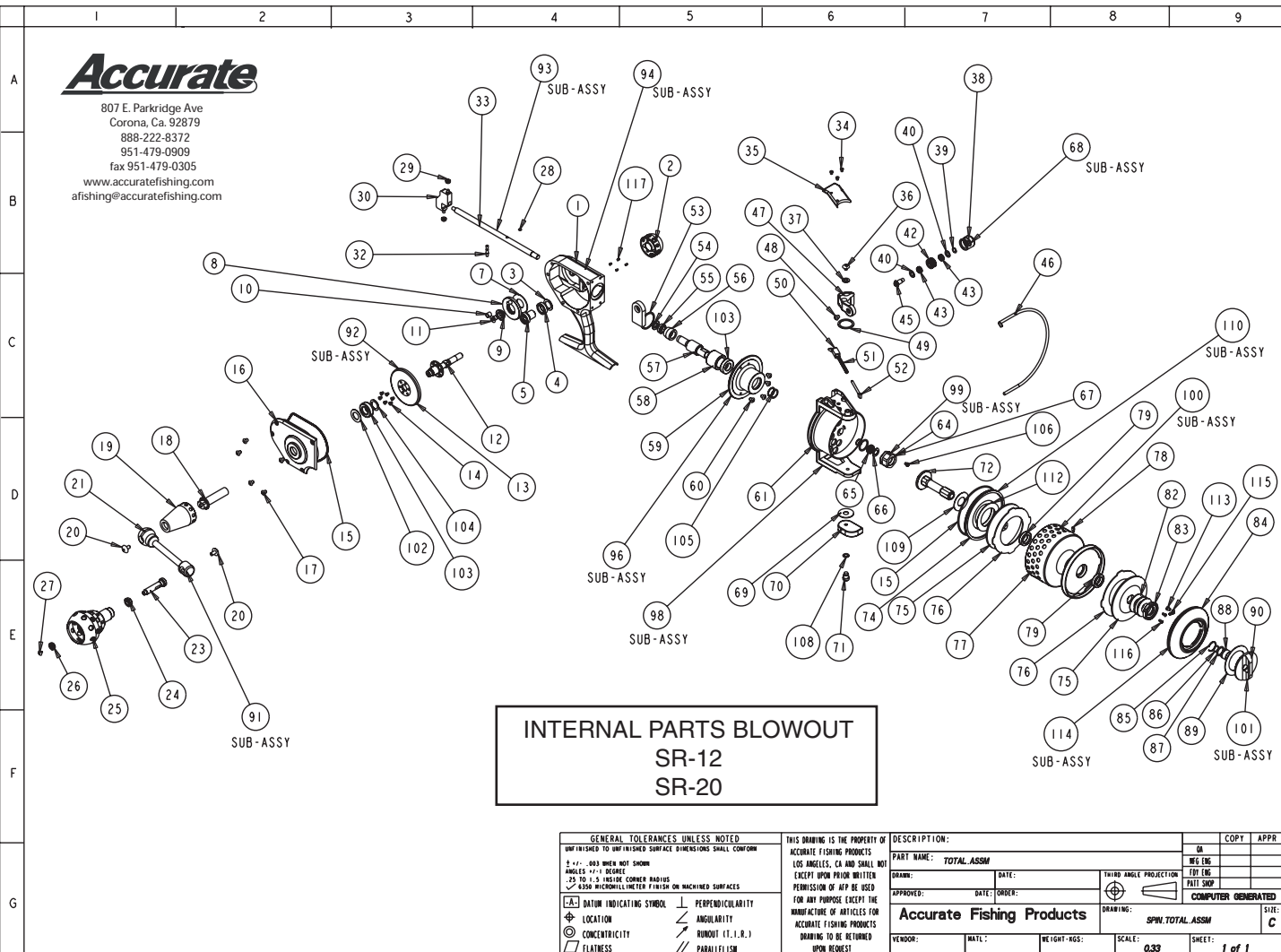


Accurate

807 E. Parkridge Ave
 Corona, Ca. 92879
 888-222-8372
 951-479-0909
 fax 951-479-0305
 www.accuratefishing.com
 afishing@accuratefishing.com



INTERNAL PARTS BLOWOUT
SR-12
SR-20

GENERAL TOLERANCES UNLESS NOTED UNFINISHED TO UNFINISHED SURFACE DIMENSIONS SHALL CONFORM 2 +/- .003 WHEN NOT SHOWN ANGLES 90° ± .0005 .25 TO 1.5 INSIDE CORNER RADII .050 MICROMETER FINISH ON MACHINED SURFACES		THIS DRAWING IS THE PROPERTY OF ACCURATE FISHING PRODUCTS LOS ANGELES, CA AND SHALL NOT BE REPRODUCED OR COPIED WITHOUT WRITTEN PERMISSION OF A/F/P. BE USED FOR ANY PURPOSE EXCEPT THE MANUFACTURE OF ARTICLES FOR ACCURATE FISHING PRODUCTS DRAWING TO BE RETURNED UPON REQUEST		DESCRIPTION: PART NAME: TOTAL.ASSM DRAWN: DATE: THIRD ANGLE PROJECTION: FIRST ANGLE APPROVED: DATE: ORDER: COMPUTER GENERATED:		COPY APPR ON ING ENG TYP ENG FILED SHOP SIZE: C
[A] DATUM INDICATING SYMBOL ⊕ LOCATION ⊙ CONCENTRICITY ▭ FLATNESS		⊥ PERPENDICULARITY ∠ ANGULARITY R (R) ROUNDOFF (R.L.R.) ∥ PARALLELISM		Accurate Fishing Products SPIN.TOTAL.ASSM VENDOR: MATL: WEIGHT: GGS: SCALE: 0.33 SHEET: 1 of 1		

NO.	COMPONENT NAME	QTY	PART#	NO.	COMPONENT NAME	QTY	PART#	NO.	COMPONENT NAME	QTY	PART#
1	SR-12,20 BODY	1	S-4548	56	SR-12,20 PINION GEAR	1	S-3910	103	SR BODY CVR-CLUTCH HSNG BEARING	2	S-3974
2	SR-12,20 HANDLE HOOD COVER	1	S-4844	57	SR-12,20 PINION GEAR SHAFT	1	S-4520	104	SR MAIN GEAR SHIM WASHER .010 THICK	1	S-4238
3	SR-12,20 MAIN GEAR SHAFT WASHER	1	S-3004	58	SR-12,20 ROLLER CLUTCH BEARING	1	S-3908	104	SR MAIN GEAR SHIM WASHER .005 THICK	1	S-4236
4	SR-12,20 SMALL GEAR SHAFT BEARING	1	S-2996	59	SR-12,20 ROLLER CLUTCH HOUSING	1	S-4524	104	SR MAIN GEAR SHIM WASHER .003 THICK	1	S-3090
5	SR-12,20 GEAR SHAFT SMALL GEAR	1	S-3008	60	SR-12,20 CLUTCH HOUSING SCREWS	4	L-2016	105	SR PINION GEAR SHAFT-ROTOR WASHER	2	S-3096
7	SR-12,20 BACK MAIN GEAR W/ PIN WASHER	1	S-2996	61	SR-12 ROTOR	1	S-4752	106	BOSS HANDLE KEEPER SCREW 4-40 X 1/8	1	B-1800
8	SR-12,20 BACK GEAR W/ PIN	1	S-4716	61	SR-20 ROTOR	1	S-5148	108	SR STEEL BAIL ARM SCREW WASHER	1	S-3082
9	SR-12,20 BACK GEAR BEARING	1	S-3978	64	SR-12,20 ROTOR NUT,20	1	S-4634	109	SR DRAG SHAFT SHIM WASHER	2	S-3118
10	SR-12,20 BACK GEAR SLIDE BUSHING	1	S-4626	65	SR-12 ROTOR NUT BEARING	1	S-3976	110	SR-12 INSIDE SPOOL COVER SUB-ASSY	1	S-3994
11	SR 12,20 BACK GEAR SCREW	1	S-4712	66	SR-12,20 NUT RUBBER WASHER	1	S-4640	110	SR-20 INSIDE SPOOL COVER SUB-ASSY	1	S-5210
12	SR-12,20 MAIN GEAR SHAFT	1	S-4032	67	SR NUT SCREW	2	S-4136	112	SR INSIDE SPOOL CVR RUBBER WASHER	1	S-3100
13	SR-12,20 MAIN GEAR	1	S-3918	68	SR-12,20 BAIL FRAME SUB-ASSY	1	S-5112	113	SR CLICKER SPRING SCREW	1	S-4324
14	SR-12,20 MAIN GEAR SHAFT SCREWS	6	S-4034	69	SR-12,20 BAIL ARM WASHER	1	S-3018	114	SR-12 SPOOL COVER SUB-ASSY	1	S-4782
15	SR-12,20 SPOOL CVR, BODY CVR O-RING	2	S-2796	70	SR-12,20 BAIL ARM STAINLESS STEEL SIDE	1	S-3058	114	SR-20 SPOOL COVER SUB-ASSY	1	S-4212
16	SR-12,20 BODY COVER	1	S-4550	71	SR-12,20 BAIL ARM - SHOULDER SCREW	1	S-4166	115	SPINNING REEL CLICKER SPRING	1	S-4290
17	SR-12,20 BODY COVER SCREWS	4	S-4036	72	SR-12,20 DRAG SHAFT	1	S-4620	116	SR DRAG SHAFT NUT KEEPER SCREWS	2	S-1438
18	SR-12,20 HANDLE ARM DRIVE SHAFT	1	S-4644	74	SR-12 INSIDE SPOOL COVER	1	S-4530	117	SR MAIN GEAR SHAFT SCREWS	4	S-4790
19	SR-12,20 HANDLE SHAFT HOOD	1	S-4632	74	SR-20 INSIDE SPOOL COVER	1	S-5194				
20	SR HANDLE SCREW - LEFT HAND	2	B-1190	75	SR-12 TITANIUM WASHER	2	S-4780				
21	SR-12,20 HANDLE ARM	1	S-4630	75	SR-20 TITANIUM WASHER	2	S-5186				
23	SR-12,20 HANDLE PIN	1	S-4646	76	SR-12 FIBER DRAG WASHER	2	S-1046				
24	POWER KNOB BEARING BIG	1	S-4288	76	SR-20 FIBER DRAG WASHER	2	S-1142				
25	HOLLOW POWER KNOB	1	S-4282	77	SR-12 SPOOL	1	S-3152				
26	POWER KNOB BEARING SMALL	1	S-4286	77	SR-20 SPOOL	1	S-5108				
27	POWER KNOB PIN SCREW	1	S-4266	79	SR SPOOL BEARING	2	L-1366				
28	SR-12,20 SPOOL SHAFT PIN O-RING	1	S-4714	82	SR-12,20 DISC SPRING WASHER	3	S-4180				
29	SR-12,20 SLIDE BEARING	2	S-3968	83	SR-12,20 DRAG SHAFT NUT	1	S-4622				
30	SR-12,20 INTERNAL Z SLIDE	1	S-4638	84	SR-12 SPOOL COVER	1	S-4580				
32	SR-12,20 SPOOL SHAFT PIN	1	S-4948	84	SR-20 SPOOL COVER	1	S-5142				
33	SR-12,20 SPOOL SHAFT	1	S-4528	85	BOSS SIDEPLATE FRAME RETAINER	1	B-1052				
35	SR-12,20 ROTOR ARM COVER	1	S-4026	86	SR PRESET KNOB SCREW FACE O-RING	1	S-4122				
36	SR ROTOR SCREW 8-32 X 3/16 T-10 TORX	1	S-4132	87	SR PRESET KNOB SCREW O-RING	1	S-4126				
37	SR-12,20 BAIL ARM SCREW WASHER	1	S-3084	88	SR PRESET KNOB SCREW	1	S-4624				
38	SR-12,20 BAIL FRAME	1	S-3750	89	SR-12,20 PRESET RUBBER WASHER	1	S-4654				
39	SR-12,20 BAIL ROLLER BEARING WASHER	1	S-3050	90	SR-12,20 PRESET KNOB	1	S-4788				
40	SR-12,20 BAIL ROLLER BEARING WASHER	2	S-3022	91	SR-12,20 HANDLE SUB-ASSY	1	S-4736				
42	SR-12,20 BAIL ROLLER	1	S-3048	92	SR-12,20 MAIN GEAR SUB-ASSY	1	S-4724				
43	SR-12,20 BAIL ROLLER - BEARING	2	S-3970	93	SR-12,20 SPOOL SHAFT SUB-ASSY	1	S-4728				
45	SR-12,20 BAIL ROLLER SHAFT	1	S-3890	94	SR 12,20 BODY SUB	1	S-4720				
46	SR-12 STAINLESS STEEL BAIL WIRE	1	S-4754	96	SR-12,20 ROLLER CLTCH HSNG SUB-ASSY	1	S-4732				
46	SR-20 STAINLESS STEEL BAIL WIRE	1	S-5152	98	SR-12 ROTOR SUB-ASSY	1	S-4744				
47	SR-12,20 BAIL ARM - ALUMINUM SIDE	1	S-4952	98	SR-20 ROTOR SUB-ASSY	1	S-5218				
48	SR BAIL FRAME SCREW 5-40 X 1/4	1	S-4130	99	SR-12,20 ROTOR NUT	1	S-4008				
49	SR-12,20 BAIL ARM WASHER BEARING SIDE	1	S-3020	100	SR-12 SPOOL SUB-ASSY	1	S-4608				
53	SR-12,20 BODY-HOUSING CLUTCH WASHER	1	S-3104	100	SR-20 SPOOL SUB-ASSY	1	S-5202				
54	SR-12,20 BODY BEARING BUSHING	1	S-4652	101	SR-12 PRESET KNOB SUB-ASSY	1	S-4758				
55	SR-12,20 PINION SHAFT BEARING	1	S-3976	102	SR-12,20 MAIN GEAR RUBBER WASHER	1	S-3006				