

LaserCAM Fabrication colour Pallett for Category 3



glossy | 138/20161 **NEW**
Caution Yellow | gloss level 80-95



glossy | 138/50039
Highland 305 | gloss level 80-95



glossy | 138/50040
Highland 306 | gloss level 80-95



glossy | 138/50041
Highland 307 | gloss level 80-95



satin | 38/50080
Ivy Green | gloss level 26-35



satin | 38/50037
Classic Green | gloss level 20-30



satin | 38/50110
Hartford Green | gloss level 26-35



matte | 38/60006
Aged Copper | gloss level 16-25



metallic | 38/50035
Seafoam Green



metallic | 38/50043
Highland 301



glossy | 138/40033
Azzurro 307 | gloss level 80-95



satin | 38/40051
Military Blue | gloss level 20 - 30



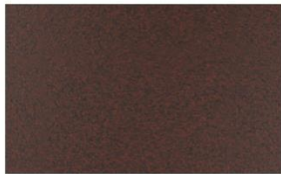
matte | 38/40025
Interstate Blue | gloss level 16-25



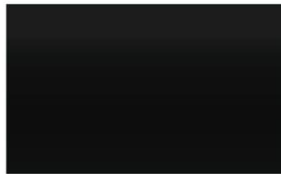
metallic | 38/40127
Pearl Night Blue



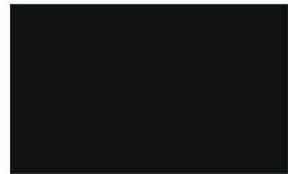
matte | 38/30033
Boysenberry | gloss level 16-25



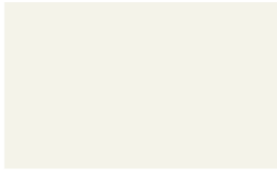
fine texture | 38/34005 **NEW**
Weathered Steel Viola



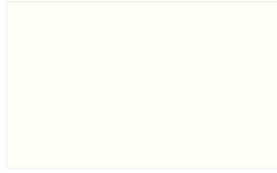
glossy | 138/80002
Carbon 301 | gloss level 80-95



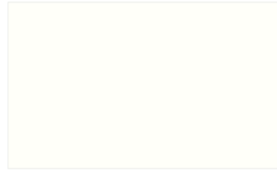
semi gloss | 138/81009
Railing Black | gloss level 55-65



glossy | 138/10007
Bianco 302 *** | gloss level 80-95



semi gloss | 138/10008 **NEW**
Railing White | gloss level 55 - 65



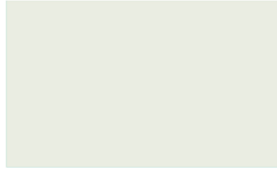
satin | 38/10130
Seashell White *** | gloss level 23-33



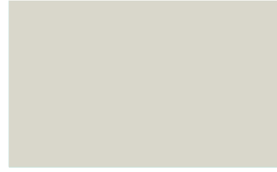
satin | 38/10070
Bone White *** | gloss level 16-25



glossy | 138/10090
Extrusion White *** | gloss level 80-95



semi matte | 38/11401
Pompano White *** | gloss level 40-50



glossy | 38/70032
Grey Classic 303 | gloss level 80-95



glossy | 138/70054
Grey Classic 308 | gloss level 80-95



glossy | 38/70056
Grey Classic 310 | gloss level 80-95



glossy | 138/70061
Grey Classic 314 | gloss level 80-95



satin | 38/70048
Sky Grey | gloss level 26-35



satin | 38/70025
Ash Grey | gloss level 26-35



satin | 38/70049
Grey | gloss level 26-35



satin | 38/70019
Slate Grey | gloss level 20-30



satin | 38/70070
Taupe *** | gloss level 26-35



satin | 38/70780 **NEW**
Charcoal Grey | gloss level 26-35