

W12-00597

SHEETMETAL MIDIBUS 8.8M VARIANT

Stock Number	Description	Quantity
PSV/27/941	MIDIBUS SHEETMETAL FINISHER	1.00
- PSV/38/258	MIDI SHEETMETAL CAPPING FINISHER 3.22M	0.98
PSV/65/080	MIDIBUS SHEETMETAL FINISHER	1.00
-PSV/38/258	MIDI SHEETMETAL CAPPING FINISHER 3.22M	0.20
PSV/66/856	MIDIBUS SHEETMETAL FINISHER	1.00
-PSV/38/257	MIDI SHEETMETAL CAPPING FINISHER 8.7M	0.70
PSV/66/857	MIDIBUS SHEETMETAL FINISHER	1.00
PSV/38/257	MIDI SHEETMETAL CAPPING FINISHER 8.7M	0.45
PSV/65/154	MIDIBUS RAD PANEL SEAL RSM-00011	1.00
-PSV/11/383	BULBTITE RUBBER SEAL	2.65
PSV/65/155	MIDIBUS REAR WHEELARCH SEALING RUBBER	1.00
-PSV/56/587	WHEELARCH RUBBER SEAL	1.10
PSV/65/016	MIDI HEATER INTAKE PANEL ASSEMBLY	1.00
- PSV/65/210	MIDI HEATER INTAKE FRAME PART 1	2.00
-PSV/65/211	MIDI HEATER INTAKE FRAME PART 2	1.00
- PSV/65/212	MIDI HEATER INTAKE FRAME PART 3	1.00
- PSV/65/213	MIDI HEATER INTAKE LOUVRE	5.00
- PSV/65/217	MIDI HEATER INTAKE BUG SCREEN ASSEMBLY	1.00
- PSV/65/214	MIDI HEATER INTAKE BUG SCREEN	1.00
- PSV/65/215	MIDI HEATER INTAKE BUG SCREEN	1.00
- PSV/65/216	MIDI HEATER INTAKE BUG SCREEN	1.00
PSV/39/004	EXTERIOR CAPPING MIDI BUS PANEL PART	2.00
PSV/43/354	M8x25 HEXALOBULAR TORX CAP HEAD BOLT	2.00
PSV/43/423	M8 x 15 HEXALOBULAR TORX CAP HEAD BOLT	34.00
PSV/65/750	M8 DOME NUT ZINC&NICKEL FINISH DIN 1587	1.00
PSV/66/565	MIDIBUS RAD SEALING ANGLE	1.00
PSV/66/566	MIDIBUS RAD SEALING ANGLE	1.00
PSV/66/567	MIDIBUS RAD SEALING ANGLE	1.00
PSV/66/568	MIDIBUS RAD SEALING ANGLE	1.00
PSV/66/858	STREETLITE S'METAL KIT 8.8' M VARIANT	1.00
- PSV/56/148	SHEETMETAL PANEL ASSEMBLY MIDIBUS	1.00
- PSV/36/620	S/METAL PANEL ASSY MIDIBUS	1.00
-PSV/66/859	SIDE SHEETMETAL PANEL - MIDIBUS	1.00
- PSV/13/916	ALUM ACCESSY BALLY RUBBER	0.57
- - PSV/40/786	MIDIBUS SHEETMETAL ATTACHMENT BRACKET	2.00
- PSV/56/192	SHEETMETAL PANEL ASSEMBLY MIDIBUS	1.00
- PSV/66/860	SIDE SHEETMETAL PANEL - MIDIBUS	1.00
- PSV/13/916	ALUM ACCESSY BALLY RUBBER	1.07
- PSV/40/786	MIDIBUS SHEETMETAL ATTACHMENT BRACKET	2.00
- PSV/36/666	S/METAL PANEL ASSY	1.00
- PSV/36/668	S/METAL PANEL ASSY	1.00
- PSV/36/669	S/METAL PANEL ASSY	1.00
- PSV/36/670	S/METAL PANEL ASSY	1.00
- PSV/36/671	S/METAL PANEL ASSY	1.00
- PSV/36/672	S/METAL PANEL ASSY	1.00
- PSV/36/673	S/METAL PANEL ASSY	1.00
- PSV/36/675	S/METAL PANEL ASSY	1.00
- PSV/36/676	SIDE SHEETMETAL PANEL - MIDI RAD PANEL A	1.00

27/03/2012

W12-00597

SHEETMETAL MIDIBUS 8.8M VARIANT

Stock Number	Description	Quantity
- PSV/36/686	S/METAL PANEL ASSY	1.00
- PSV/36/687	SIDE SHEETMETAL ASM - MIDIBUS	1.00
- PSV/66/861	SIDE SHEETMETAL ASM - MIDIBUS	1.00
-PSV/40/786	MIDIBUS SHEETMETAL ATTACHMENT BRACKET	2.00
- PSV/13/916	ALUM ACCESSY BALLY RUBBER	0.43
- PSV/56/158	MIDIBUS PANEL ATTACHMENT BRACKET	6.00
-PSV/11/122	MIDIBUS SHEETMETAL ATTACHMENT BRACKET	7.00
- PSV/11/110	MIDIBUS PANEL ATTACHMENT BRACKET	8.00
- PSV/21/133	MIDIBUS PANEL ATTACHMENT 1/2 BRACKET	7.00
- PSV/11/488	MIDIBUS WHEELARACH SHEETMETAL BRKT ASSY	4.00
- PSV/56/084	MIDIBUS WHEELARACH SHEETMETAL BRKT ASSY	2.00
- PSV/11/124	MIDIBUS RADIATOR S'METAL BRACKET ASSY	1.00

27/03/2012



PSV/56/158



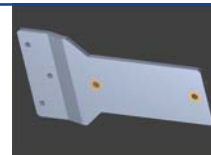
PSV/11/122



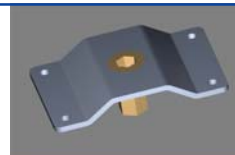
PSV/11/110



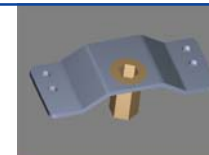
PSV/21/133



PSV/11/488



PSV/56/084



PSV/11/124



PSV/36/671

PSV/36/672

PSV/36/673

PSV/36/675

PSV/56/192

PSV/36/620

PSV/43/423



PSV/13/916
Anti Vibration Rubber
Sold per Metre



W12-00597
SHEETMETAL - BASIC ASSEMBLY



PSV/56/158



PSV/11/122



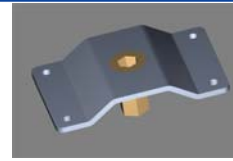
PSV/11/110



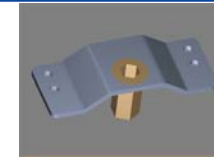
PSV/21/133



PSV/11/488



PSV/56/084



PSV/11/124



PSV/39/004

PSV/36/676

PSV/36/686

PSV/36/666

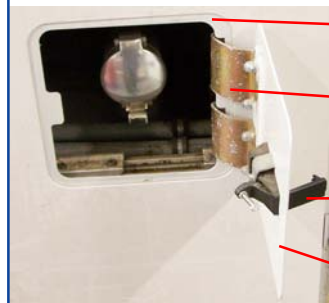
PSV/56/148

PSV/36/687

PSV/36/668

PSV/36/669

PSV/36/670

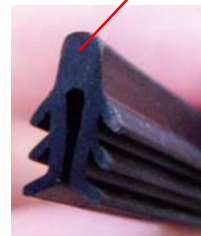


PSV/56/172

PSV/12/911

PSV/12/088

PSV/56/174



PSV/13/916
Anti Vibration Rubber
Sold per Metre



PSV/43/423

W12-00597
SHEETMETAL - BASIC ASSEMBLY