

PSV TRANSPORT SYSTEMS



Door Button Open/Close

Part No	Description	Application
PSV/06/001	Electric	Peters
PSV/06/002	Air	Peters, Deans, Ventura
PSV/06/003	Air/Electric	Peters
PSV/06/325	2 x Air, 2 x Electric	Ventura
PSV/06/500	Air/Electric	Peters



Large Door Button Open/Close

Part No	Description	Application
PSV/06/004	Electric	Deans
PSV/06/005	Air	Deans



Door Button Open/Close

Part No	Description	Application
PSV/06/006	Electric	Peters, Ventura
PSV/06/007	Air	Peters, Deans



Door Close Button

Part No	Description	Application
PSV/06/008	Electric	Peters
PSV/06/009	Air	Peters, Deans



Door Open Button

Part No	Description	Application
PSV/06/326	Electric	Peters
PSV/06/327	Air	Peters



Door Open Button, Raised Button

Part No	Description	Application
PSV/06/328	Pneumatic	Peters, Deans
PSV/06/010	Electric	Peters



Door Close Button

Part No	Description	Application
PSV/06/734	Air	Deans



Door Open Button, Raised Button

Part No	Description	Application
PSV/06/010	Electric	Deans
PSV/06/011	Pneumatic	Deans



Door Button, Black

Part No	Description	Application
PSV/06/329	Air	Peters, Deans
PSV/06/330	Electric	Peters

DOOR SWITCHES

3.1

DOOR SWITCHES



Door Button

Part No	Description	Application
PSV/06/340	Green	Ventura
PSV/06/341	Red	Ventura



Door Button

Part No	Description	Application
PSV/06/338	Open	Peters
PSV/06/339	Close	Peters



Internal Emergency Button, Pneumatic

Part No	Description	Application
PSV/06/040	Red	Ventura
PSV/06/041	Black	Ventura



Drivers Door Button Close, Illuminated

Part No	Description	Application
PSV/06/016	Green	Peters
PSV/06/017	Red	Peters



24V Bulb for PSV/06/016 and PSV/06/017

Part No	Description	Application
PSV/06/334	Bulb	Peters



Door Open Button

Part No	Description	Application
PSV/10/721	Button	



Ramp Request Button

Part No	Description	Application
PSV/06/015	Button	Deans, Peters, Ventura
PSV/06/589	Yellow Bezel	
PSV/06/590	Lacquered Yellow Bezel	



Ramp Request Button, Illuminated

Part No	Description	Application
PSV/06/014	Button	Deans



Electric Push Button Normally Open

Part No	Description	Application
PSV/06/035	Push Button	Ventura



Exterior Close Button

Part No	Description	Application
PSV/06/042	Close Button	Ventura



Emergency Push Button

Part No	Description	Application
PSV/06/777	Button	Ventura



Emergency Open Button

Part No	Description	Application
PSV/06/044	Normally Open, Air	Ventura
PSV/06/045	Normally Closed, Air/Electric	Ventura



Emergency Button, Normally Closed, Air

Part No	Description	Application
PSV/06/342	Door Button	Ventura



Emergency Button Exterior Cover

Part No	Description	Application
PSV/06/046	Cover	Ventura



Emergency Button Interior Cover

Part No	Description	Application
PSV/06/047	Cover	Ventura



Emergency Door Button Cover

Part No	Description	Application
PSV/06/343	Cover	Ventura



External Emergency Door Button

Part No	Description	Application
PSV/06/332	Air	Ventura
PSV/06/333	Air/Electric	Ventura



External Emergency Door Button

Part No	Description	Application
PSV/06/012	Electric	Peters, Deans
PSV/06/013	Air	Peters, Deans
PSV/06/331	Air/Electric	Ventura



Exterior Emergency Door Button, 3 Port

Part No	Description	Application
PSV/06/540	Air	Deans
PSV/06/344	Engraved Disc	



Sunk Dish

Part No	Description	Application
PSV/06/018	Sunk Dish	Deans
PSV/06/019	With Red Button	Deans
PSV/06/020	With Red and Green Button	Deans

DOOR SWITCHES

3.3

DOOR SWITCHES



Sunk Dish Assembly

Part No	Description	Application
PSV/06/593	Sunk Dish	



Sunk Dish Assembly with Square Hole

Part No	Description	Application
PSV/06/335	Sunk Dish	Ventura



Plastic Dish for PSV/06/018

Part No	Description	Application
PSV/06/337	Dish	Deans



Door Button Flap

Part No	Description	Application
PSV/06/336	Door Flap	



Door Button Cover

Part No	Description
PSV/15/594	Cover



Disabled Button Illuminated, Single Glaze

Part No	Description	Application
PSV/06/036	Door Button	Ventura



Disabled Button Illuminated, Double Glaze

Part No	Description	Application
PSV/06/037	Door Button	Ventura



Disabled Button

Part No	Description	Application
PSV/06/043	Door Button	Ventura



Green Open Button Illuminated, Single Glaze

Part No	Description	Application
PSV/06/038	Door Button	Ventura



Green Open Button Illuminated, Double Glaze

Part No	Description	Application
PSV/06/039	Door Button	Ventura



Emergency Door Button

Part No	Description	Application
PSV/06/501	Air	Deans



Door Button, Air, 3 Port

Part No	Description	Application
PSV/06/026	Door Button	Deans



Exit Door Button Assembly, Green Close Electric, Red Open Air

Part No	Description	Application
PSV/06/024	Door Button	Deans



Entrance Door Button Air

Part No	Description	Application
PSV/06/025	Door Button	Deans



Interior Emergency Open Button, Air, 3 Port

Part No	Description	Application
PSV/06/345	Door Button	Deans



Drivers Door Button Assembly, Electric

Part No	Description	Application
PSV/06/021	Door Button	Deans



Drivers Door Button Assembly, Electric

Part No	Description	Application
PSV/06/022	Door Button	Deans



Drivers Door Button Assembly, Electric

Part No	Description	Application
PSV/06/023	Door Button	Deans



Microswitch for Door Buttons

Part No	Description
PSV/06/351	Microswitch



Microswitch for Door Buttons

Part No	Description
PSV/10/035	Microswitch



Round Bezel, Sealed, for Door Buttons

Part No	Description
PSV/06/350	Bezel



Air Bleed Switch

Part No	Description
PSV/10/286	Red
PSV/15/595	Green

DOOR SWITCHES

3.5

DOOR SWITCHES



Round Button Assembly

Part No	Description
PSV/06/027	Green, Electric
PSV/06/028	Green, Air
PSV/06/029	Red, Electric
PSV/06/030	Red, Air



Square Button Assembly

Part No	Description
PSV/06/031	Green, Electric
PSV/06/032	Green, Air
PSV/06/033	Red, Electric
PSV/06/034	Red, Air



Round Insert for Door Buttons

Part No	Description
PSV/06/346	Red
PSV/06/347	Green



Square Insert for Door Buttons

Part No	Description
PSV/06/348	Red
PSV/06/349	Green

SUPPLIER SPOTLIGHT



PSV are an authorised distributor for Parker Hannifin. Parker is a supplier of hydraulics, pneumatics and filtration. We are the UK authorised repair agent for Parker Rams and Rodless Cylinders found in common Ventura Door Systems. We stock a large amount of new and service exchange units.





Bottom Bearing Assembly

Part No	Description	Application
PSV/06/048	22mm Roller	Peters
PSV/06/049	25mm Roller	Peters



Inline Bottom Bearing with 32mm Roller

Part No	Description	Application
PSV/06/052	No1	Deans
PSV/06/053	No2	Deans



Tri Bottom Bearing

Part No	Description	Application
PSV/06/054	25mm Roller	Deans
PSV/06/055	32mm Roller	Deans



Inline Bottom Bearing, 25mm Roller

Part No	Description	Application
PSV/06/502	Bearing	Deans



Bottom Bearing Assembly

Part No	Description	Application
PSV/06/503	Bearing	Deans



Bottom Bearing Assembly 32mm Roller

Part No	Description	Application
PSV/06/566	Bearing	TDS



Solo Inline Bottom Bearing 25mm

Part No	Description	Application
PSV/06/504	Bearing	TDS



Bottom Door Bearing Assembly

Part No	Description	Application
PSV/06/505	Bearing	Peters



Bottom Door Bearing Assembly 22mm Roller

Part No	Description	Application
PSV/06/541	Bearing	Peters



Bottom Bearing Assembly

Part No	Description	Application
PSV/06/506	Bearing	Peters



Bottom Assembly 35mm Height

Part No	Description	Application
PSV/06/058	Bearing	Peters



Bottom Door Bearing

Part No	Description	Application
PSV/06/225	Bearing	Deans

DOOR BRACKETS AND ROLLERS

3.7

DOOR BRACKETS AND ROLLERS



Bottom Bearing Assembly

Part No	Description	Application
PSV/06/524	Left (Illustrated)	Deans
PSV/06/525	Right	Deans



Roller Bracket Assembly

Part No	Description	Application
PSV/06/226	Left	Deans
PSV/06/227	Right	Deans



Roller Bracket

Part No	Description	Application
PSV/06/155	Bracket	Deans
PSV/06/156	Bracket	Deans



Left Hand Door Roller Bracket Assembly

Part No	Description	Application
PSV/06/157	Assembly	Peters
PSV/06/160	Bracket Only	Deans



Right Hand Door Guide Bracket Assembly

Part No	Description	Application
PSV/06/158	Assembly	Peters
PSV/06/159	Bracket Only	Peters



Bottom Support

Part No	Description	Application
PSV/06/245	Left	Ventura
PSV/06/246	Right	Ventura



Door Guide Bracket, Right Hand

Part No	Description	Application
PSV/06/679	Bracket	Ventura



Door Guide Bracket, Left Hand

Part No	Description	Application
PSV/06/678	Bracket	Ventura



Bottom Support Catch Block

Part No	Description	Application
PSV/06/709	Bracket	Ventura



Doorshaft Adjust Bracket 28mm, Left

Part No	Description	Application
PSV/06/247	Bracket	Ventura



Doorshaft Adjusting Bracket

Part No	Description	Application
PSV/06/248	Bracket	Ventura



Bottom Support Assembly

Part No	Description	Application
PSV/06/249	Left (Illustrated)	Ventura
PSV/06/250	Right	Ventura



Bottom Support Assembly

Part No	Description	Application
PSV/06/251	Left (Illustrated)	Ventura
PSV/06/252	Right	Ventura



Bottom Support Assembly

Part No	Description	Application
PSV/06/253	Left (Illustrated)	Ventura
PSV/06/254	Right	Ventura



Bottom Support Assembly

Part No	Description	Application
PSV/06/255	Left (Illustrated)	Ventura
PSV/06/256	Right	Ventura



Bottom Support Assembly

Part No	Description	Application
PSV/06/257	Left (Illustrated)	Ventura
PSV/06/258	Right	Ventura



Hinge Housing Block and Bearing Assembly

Part No	Description	Application
PSV/06/056	Bearing Block	Deans



Bottom Hinge Bracket Assembly

Part No	Description	Application
PSV/06/528	Assembly	Deans
PSV/06/527	Bracket Only	Deans



Lower Bearing Bracket Assembly

Part No	Description	Application
PSV/06/535	Assembly	TDS



Flap Bracket IG4

Part No	Description	Application
PSV/06/455	Bracket	Ventura



Lower Hinge Pivot Bracket

Part No	Description	Application
PSV/06/148	Bracket	Deans



Brush Carrier Bracket

Part No	Description	Application
PSV/06/146	Left	Deans
PSV/06/147	Right	Deans



Anti-Rattle Bracket

Part No	Description	Application
PSV/06/429	Bracket	Peters



Doorshaft Adjusting Bracket

Part No	Description	Application
PSV/06/706	Bracket	Ventura

DOOR BRACKETS AND ROLLERS

3.9

DOOR BRACKETS AND ROLLERS



Overton Hinge Pivot

Part No	Description	Application
PSV/06/507	Hinge Pivot	Overton



Pivot Plate

Part No	Description	Application
PSV/06/149	Pivot Plate	Overton



Door Pivot Repair Kit

Part No	Description	Application
PSV/06/508	Repair Kit	Peters



Universal Door Guide Spindle

Part No	Description	Application
PSV/06/050	94mm	Deans, Peters, Ventura, TDS
PSV/06/051	86.5mm	Deans, Peters, Ventura, TDS



Guiding Shaft Assembly (90) Cable Entry - Transit, East Lancs, MCV, ADL E200 Cable Entrance

Part No	Description	Application
PSV/06/086	Assembly	Ventura



Guiding Shaft Assembly (78) Cable Entry - Wrightbus DD Dub, ADL E400 and E500 Cable Entrance

Part No	Description	Application
PSV/06/087	Assembly	Ventura



28mm Guide Shaft Assembly - Wrightbus SD and DD, ADL E400, East Lancs and Optare UK, No Cable Entrance

Part No	Description	Application
PSV/06/088	Assembly	Ventura



Guide Shaft Assembly 28mm, Transit, East Lancs, MCV Cable Entrance

Part No	Description	Application
PSV/06/244	Assembly	Ventura



28mm Guide Roller Assembly - Wrightbus SD and DD, ADL E400, East Lancs and Optare UK, No Cable Entrance

Part No	Description	Application
PSV/06/089	Assembly	Ventura



Door Roller Assembly Without Bracket

Part No	Description	Application
PSV/06/526	Assembly	TDS



Door Guide Spindle

Part No	Description	Application
PSV/06/616	Assembly	Deans



Spring Door Stop

Part No	Description	Application
PSV/06/161	Door Stop	Deans



Spring Door Stop

Part No	Description	Application
PSV/06/162	Door Stop	Deans



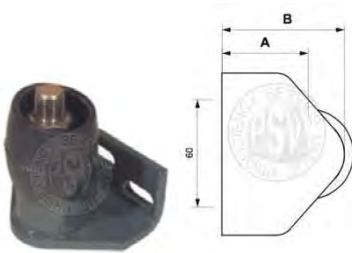
Spring Door Stop

Part No	Description	Application
PSV/06/567	Blue	TDS
PSV/06/568	Cream	TDS



Bracket

Part No	Description	Application
PSV/06/545	Bracket	Masats



Bracket

Part No	Description	Application
PSV/06/546	A = 40mm B = 60mm	Masats
PSV/06/547	A = 48mm B = 68mm	Masats



Bottom Door Bearing

Part No	Description	Application
PSV/06/580	Bearing	Masats



Door Roller Bracket Assembly

Part No	Description	Application
PSV/06/592	Bracket	Bode



Pivot Kit

Part No	Description	Application
PSV/06/681	Pivot Kit	Deans

DOOR BRACKETS AND ROLLERS

3.11

DOOR BEARINGS AND ROLLERS



25mm Diameter Flanged Spherical Bearing

Part No	Description	Application
PSV/06/067	Bearing	Deans, TDS



Top Nylon Bearing

Part No	Description	Application
PSV/06/068	Bearing	Deans



Bearing Block

Part No	Description	Application
PSV/06/083	Bearing	Ventura



Spherical Bearing

Part No	Description	Application
PSV/06/069	M14	Deans
PSV/06/071	M12	Deans



25mm Nylon Roller

Part No	Description	Application
PSV/06/072	Nylon Roller	Peters
PSV/06/073	Roller with Bush	Peters



32mm Nylon Roller

Part No	Description	Application
PSV/06/074	Roller	Deans



30mm Nylon Roller

Part No	Description	Application
PSV/06/075	Roller	Deans



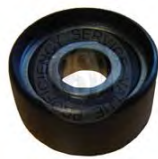
32mm Nylon Roller

Part No	Description	Application
PSV/06/076	Roller	Deans



Nylon Roller

Part No	Description	Application
PSV/06/084	Roller	Ventura



Bearing Roller Assembly

Part No	Description	Application
PSV/06/077	Assembly	Ventura
PSV/06/542	Bearing Only	Ventura



Roller Assembly 26mm

Part No	Description	Application
PSV/06/261	Roller	Ventura



Nylon Bearing Bush 16 x 22 x 15

Part No	Description	Application
PSV/06/078	Bush	Ventura



Shaft Bearing Bush

Part No	Description	Application
PSV/06/080	Bush	Ventura



Bearing Bush IG4 38 x 2.5

Part No	Description	Application
PSV/06/511	Bush	Ventura



Bearing Bush for Ventura Pillar Tube

Part No	Description	Application
PSV/06/515	Bush	Ventura



Top Hat Nylon Flange Bearing 22mm

Part No	Description	Application
PSV/06/060	Bearing	Peters



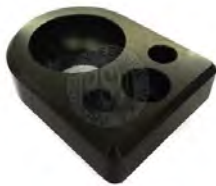
Locating Bush

Part No	Description	Application
PSV/06/085	Bush	Ventura



PSP Cable Roller Assembly

Part No	Description	Application
PSV/06/090	Roller	Ventura



Upper Bearing

Part No	Description	Application
PSV/06/357	Bearing	Overton



M25 Spherical Flange Bearing

Part No	Description	Application
PSV/06/431	Bearing	Peters



Nylon Bearing

Part No	Description	Application
PSV/06/432	Bearing	Peters



Bearing Housing Assembly

Part No	Description	Application
PSV/06/433	Bearing	Peters



Nylon Bearing for Stub Shaft

Part No	Description	Application
PSV/06/509	Bearing	Peters



Bearing Bush for Entrance Door

Part No	Description	Application
PSV/06/513	Bush	Ventura

DOOR BEARINGS AND ROLLERS

3.13

DOOR BEARINGS AND ROLLERS



Bearing Bush

Part No	Description	Application
PSV/06/514	Bush	Ventura



Bearing Bush

Part No	Description	Application
PSV/06/516	Bush	Ventura



Plain Bearing DIN 648 GE 14 PW

Part No	Description	Application
PSV/06/517	Bush	Ventura



Flanged Oilite Bush

Part No	Description	Application
PSV/06/518	Bush	Ventura



Guide Bearing 22mm Diameter

Part No	Description	Application
PSV/06/519	Bearing	Peters



Guide Roller LR 202 2RSR

Part No	Description	Application
PSV/06/520	Roller	TDS



**Bearing Diameter 20mm
Radial Ball 6004-2z**

Part No	Description	Application
PSV/06/534	Bearing	Deans



Roller Tyre

Part No	Description	Application
PSV/06/521	26mm	Ventura
PSV/06/522	30mm	Ventura



Bearing 10mm Diameter

Part No	Description	Application
PSV/06/523	Bearing	Ventura



Bearing Enviro

Part No	Description	Application
PSV/06/531	Bearing	Deans



Bearing

Part No	Description	Application
PSV/06/569	Bearing	Masats



Bearing

Part No	Description	Application
PSV/06/548	Bearing	Tamware



Bearing Door Guide Arm



Bearing

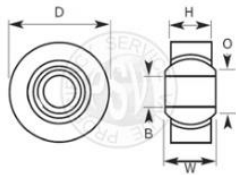


Igus Bearing Modified

Part No	Description	Application
PSV/06/549	Bearing	Tamware

Part No	Description	Application
PSV/06/532	Bearing	Deans

Part No	Description	Application
PSV/06/533	Bearing	Deans



Part Number	Bore Size	W	H	D	O	Application
PSV/06/057	10	14mm	10.5mm	26mm	12.9mm	Deans
PSV/06/059	14	19mm	13.5mm	34mm	16.8mm	Peters



Part Number	Description	Size	Hand	Application
PSV/06/061	Rod End	M10 x 1.5	Right	Peters. Ventura
PSV/06/062	Rod End	M10 x 1.5	Left	Peters. Ventura
PSV/06/063	Rod End	M12 x 1.75	Right	Peters
PSV/06/064	Rod End	M12 x 1.75	Left	
PSV/06/536	Rod End	M14 x 2.0	Right	TDS
PSV/06/537	Rod End	M14 x 2.0	Left	TDS
PSV/06/065	Rod End	7/16	Right	Deans
PSV/06/066	Rod End	1/2	Right	Deans
PSV/06/081	Rod End	M8	Right	Ventura
PSV/06/082	Rod End	M8	Left	Ventura

DOOR BEARINGS AND ROLLERS

3.15

DOOR BEARINGS AND ROLLERS



Right Hand Female Rod End

Part No	Description	Application
PSV/06/538	M12 x 1.5	TDS
PSV/06/539	M16 x 1.5	TDS



Ball Joint M10, M14 x 1.5

Part No	Description	Application
PSV/06/550	Right	Masats
PSV/06/581	Left	Masats



Rose Bearing

Part No	Description	Application
PSV/06/551	Right	Tamware
PSV/06/552	Left	Tamware



Rod End Assembly

Part No	Description	Application
PSV/06/070	Rod End	Peters



Fork Joint 16 X 32 M16 IGP Cylinder

Part No	Description	Application
PSV/06/243	Fork Joint	Ventura



Vibration Dampner

Part No	Description	Application
PSV/06/265	Dampner	Ventura



Oilite Bush

Part No	Description	Application
PSV/06/510	Bush	



Door Guide Roller 28mm

Part No	Description	Application
PSV/06/741	Guide Roller	Ventura



Crank Arm 57 Pin

Part No	Description	Application
PSV/06/163	Crank Arm	Peters



Centre Crank Arm

Part No	Description	Application
PSV/06/352	Crank Arm	Peters



Crank Arm

Part No	Description	Application
PSV/06/353	Crank Arm	TDS



Lower Crank Coller

Part No	Description	Application
PSV/06/354	Collar	Peters



Crank Arm

Part No	Description	Application
PSV/06/355	Crank Arm	Peters



Drive Lever Splined 59 Centres

Part No	Description	Application
PSV/06/356	Lever	Peters



Drive Lever Splined 88 Centres

Part No	Description	Application
PSV/06/164	Lever	Deans



Stub Shaft, 22mm Diameter

Part No	Description	Application
PSV/06/358	64mm	Peters
PSV/06/359	92mm	Peters
PSV/06/360	98mm	Peters



Stub Shaft, RH Electric Flush Glider, 22mm Diameter

Part No	Description	Application
PSV/06/361	Stub Shaft	Peters



Stub Shaft Assembly, 25mm Diameter

Part No	Description	Application
PSV/06/362	Stub Shaft	TDS



Stub Shaft, Double Splined, 130mm, 22-25-22mm Diameter

Part No	Description	Application
PSV/06/363	Stub Shaft	Peters



Stub Shaft, 120mm length, 22mm Diameter

Part No	Description	Application
PSV/06/364	Stub Shaft	Peters

CRANK ARMS AND STUBSHAFTS

3.17

FABRICATED PARTS



Drive Shaft

Part No	Description	Application
PSV/06/365	Drive Shaft	Deans



Drive Shaft Clamp Plate

Part No	Description	Application
PSV/06/366	Clamp Plate	Deans



Left Hand Catch Pin Plate

Part No	Description	Application
PSV/06/153	Left Hand	Ventura
PSV/06/154	Righth Hand	Ventura



Left Hand Catch Pin Plate

Part No	Description	Application
PSV/06/151	Left Hand	Ventura
PSV/06/152	Right Hand	Ventura



Bearing Plate For M25 Spherical Bearing

Part No	Description	Application
PSV/06/430	Plate	Peters



Bearing Plate

Part No	Description	Application
PSV/06/529	Right Hand	Peters
PSV/06/530	Left Hand	Peters



Thread Block 2 x M12

Part No	Description	Application
PSV/20/090	Block	Ventura



Lower Tapped Box

Part No	Description	Application
PSV/06/427	Box	TDS



Triple Offset Tapped Back

Part No	Description	Application
PSV/06/428	Tapped Back	TDS



Pivot Bolt 16 x M10

Part No	Description	Application
PSV/06/079	Bolt	Ventura



Switch Cam Shaft

Part No	Description	Application
PSV/06/150	Cam Shaft	Ventura



Pivot Pin

Part No	Description	Application
PSV/06/259	Pin	Ventura

PSV TRANSPORT SYSTEMS



Tapping Strip

Part No	Description	Application
PSV/06/441	Tapping Strip	Ventura



Pivot Plate Tapped

Part No	Description	Application
PSV/06/443	Plate	Ventura



Bearing Point Flap IG4

Part No	Description	Application
PSV/06/512	Point Flap	Ventura



Pivot Point Bolt Flap IG4

Part No	Description	Application
PSV/06/776	Point Bolt	Ventura



Shelfplate Guide Rail

Part No	Description	Application
PSV/06/435	Rail	Deans



Aluminium M8 Spacer

Part No	Description	Application
PSV/06/436	Spacer	Deans



M8 x 45 Male - Female Spacer

Part No	Description	Application
PSV/06/437	Spacer	Peters



Roller Spindle 97mm Straight

Part No	Description	Application
PSV/06/438	97mm	Deans
PSV/06/439	71mm	Deans



Shaft Cylinder

Part No	Description	Application
PSV/06/446	Cylinder	Ventura



Catch Wedge, Left Illustrated

Part No	Description	Application
PSV/06/449	Left	Ventura
PSV/06/450	Right	Ventura



Slide Plate, Extended, Left Illustrated

Part No	Description	Application
PSV/06/453	Left	Ventura
PSV/06/454	Right	Ventura



Slide Plate, Left Illustrated

Part No	Description	Application
PSV/06/447	Left	Ventura
PSV/06/448	Right	Ventura

FABRICATED PARTS

3.19

FABRICATED PARTS



Door Arm Top



Microswitch Guide Rail

Part No	Description	Application	Part No	Description	Application
PSV/06/451	Left (Illustrated)	Ventura	PSV/06/434	Rail	Deans
PSV/06/452	Right	Ventura			



Door Ram (IGP) 50 X 125mm Assembly

Part No	Description	Application
PSV/06/210	Left	Ventura
PSV/06/211	Right	Ventura



Door Cylinder (IGP) 63 x 125mm Assembly

Part No	Description	Application
PSV/06/214	Left	Ventura
PSV/06/215	Right	Ventura



Door Cylinder (IGP) 50 X 125 Cush Extend Assembly

Part No	Description	Application
PSV/06/213	Door Ram	Ventura



Door Ram 63 x 250mm Assembly

Part No	Description	Application
PSV/06/212	Door Ram	Ventura



Door Ram 63 x 85mm Stroke

Part No	Description	Application
PSV/06/189	New	Peters
PSV/06/189-R	Repair	Peters



Door Ram 63 x 76mm Stroke

Part No	Description	Application
PSV/06/373	Door Ram	Deans



Door Ram 63 x 125mm Stroke

Part No	Description	Application
PSV/06/192	New	Deans
PSV/06/192-R	Repair	Deans
PSV/06/464	Repair Kit	Deans



Door Ram 50 x 140mm Stroke

Part No	Description	Application
PSV/06/374	Door Ram	Deans



Door Ram 63 x 80mm Stroke

Part No	Description	Application
PSV/06/190	New	Overton
PSV/06/190-R	Repair	Overton



Door Ram 63 x 76mm Stroke

Part No	Description	Application
PSV/06/188	New	Deans
PSV/06/188-R	Repair	Deans



Door Ram 63 x 85mm Stroke

Part No	Description	Application
PSV/06/369	Door Ram	Peters



Door Ram 63 x 85mm Stroke

Part No	Description	Application
PSV/06/187	New	Deans
PSV/06/187-R	Repair	Deans

DOOR CYLINDERS AND RAMS

3.21

DOOR CYLINDERS AND RAMS



Door Ram 50 x 90mm Stroke

Part No	Description	Application
PSV/06/193	New	Deans
PSV/06/193-R	Repair	Deans



Door Ram 63 x 100mm Stroke

Part No	Description	Application
PSV/06/371	Door Ram	TDS



Door Ram 63 x 76mm Stroke

Part No	Description	Application
PSV/06/191	New	Overton
PSV/06/191-R	Repair	Overton



Door Ram 40 x 115mm Stroke

Part No	Description	Application
PSV/06/194	New	Deans
PSV/06/194-R	Repair	Deans



Door Ram 63 x 156mm Stroke

Part No	Description	Application
PSV/06/463	Door Ram	Peters



Door Ram

Part No	Description	Application
PSV/06/208	New	Bode
PSV/06/208-R	Repair	Bode
PSV/06/209	Repair Kit	Bode



Door Cylinder 60mm Bore Repair

Part No	Description	Application
PSV/06/553	Door Ram	Bode
PSV/06/554	Seal Kit	Bode



Door Ram 63 x 85mm Stroke

Part No	Description	Application
PSV/06/370	Door Ram	Peters



Door Cylinder

Part No	Description	Application
PSV/06/705	New	Deans
PSV/06/705-R	Repair	Deans



Locking Cylinder

Part No	Description	Application
PSV/06/582	Ram	Tamware



Mini Cylinder ESN-25-25-P

Part No	Description	Application
PSV/06/266	Ram	Ventura



Mini Cylinder R1012-0025 RB

Part No	Description	Application
PSV/06/267	Ram	Ventura



Mini ISO Ram 16 x 25mm Stroke

Part No	Description	Application
PSV/06/372	Ram	Peters



Rodless Door Ram 40 x 535mm Stroke

Part No	Description	Application
PSV/06/377	Door Ram	Deans



Rodless Cylinder (PSP) 1170mm Assembly

Part No	Description	Application
PSV/06/199	New	Ventura
PSV/06/199-R	Repair	Ventura



Rodless Cylinder (PSP) 32 x 895mm Assembly

Part No	Description	Application
PSV/06/202	New	Ventura
PSV/06/202-R	Repair	Ventura



Rodless Cylinder (PSP) 1270 Assembly

Part No	Description	Application
PSV/06/201	New	Ventura
PSV/06/201-R	Repair	Ventura



Rodless Cylinder (PSP) 32 x 730mm Assembly

Part No	Description	Application
PSV/06/204	New	Ventura
PSV/06/204-R	Repair	Ventura



Rodless Cylinder (PSP) 32 x 795mm Assembly

Part No	Description	Application
PSV/06/205	New	Ventura
PSV/06/205-R	Repair	Ventura



Rodless Cylinder (PSP) 32 x 795mm Assembly

Part No	Description	Application
PSV/06/207	New	Ventura
PSV/06/207-R	Repair	Ventura



Door Ram 40 x 450mm Stroke

Part No	Description	Application
PSV/06/376	Door Ram	Peters



Cylinder Bracket

Part No	Description	Application
PSV/06/708	Bracket	



Piston Rod Assembly Repair Kit

Part No	Description	Application
PSV/06/700	Repair Kit	



Cylinder Repair Kit

Part No	Description	Application
PSV/06/707	Repair Kit	

DOOR CYLINDERS AND RAMS

3.23

DOOR CYLINDERS AND RAMS



Door Cylinder



Door Cylinder



Door Cylinder East Lancs Scania

Part No	Description	Application	Part No	Description	Application	Part No	Description
PSV/06/555	New	Bode	PSV/06/584	New	Masats	PSV/06/370	Door Cylinder
PSV/06/555-R	Repair	Bode	PSV/06/584	Repair	Masats		
PSV/06/556	Seal Kit	Bode					



Our dedicated van sales representatives stock a wide range of spare parts. To arrange a visit please contact sales@psvltd.co.uk

PSV TRANSPORT SYSTEMS



Pool Valve

Part No	Description	Application
PSV/06/091	New	Deans
PSV/06/091-R	Repair	Deans



Deans Press Applied Solenoid Spool Valve

Part No	Description	Application
PSV/06/092	New	Deans
PSV/06/092-R	Repair	Deans



5-2 valve D-Solenoid 24V and Pilot, 1/8BSP - 6mm Fit Assy

Part No	Description	Application
PSV/06/093	New	Deans
PSV/06/093-R	Repair	Deans



Air Bleed Solenoid Spool Valve HD

Part No	Description	Application
PSV/06/094	New	Deans
PSV/06/094-R	Repair	Deans



Spool Valve

Part No	Description	Application
PSV/06/095	New	Deans
PSV/06/095-R	Repair	Deans



Pressure Applied Double Solenoid Spool Valve

Part No	Description	Application
PSV/06/101	Spool Valve	



Air Bleed Universal Spool Valve

Part No	Description	Application
PSV/06/099	Spool Valve	



Air Bleed Double Solenoid Spool Valve

Part No	Description	Application
PSV/06/100	Spool Valve	



Spool Valve

Part No	Description	Application
PSV/06/379	Spool Valve	



Air Bleed Spool Valve

Part No	Description	Application
PSV/06/096	Spool Valve	



24V Air Bleed Double Solenoid Spool Valve

Part No	Description	Application
PSV/06/097	Spool Valve	



24V Pressure Applied Double Solenoid Spool Valve

Part No	Description	Application
PSV/06/098	Spool Valve	

DOOR VALVES

3.25

DOOR VALVES



Spool Valve with Fittings

Part No	Description	Application
PSV/06/690	Spool Valve	Ventura



Electro Pneumatically Operated Solenoid Valve

Part No	Description	Application
PSV/06/703	Valve	Ventura



Valve, 3/2 SPD Roller

Part No	Description	Application
PSV/06/723	Valve	



Deans Press Applied Solenoid Spool Valve

Part No	Description	Application
PSV/06/391	Spool Valve	TDS



5/2 Pilot/Pilot Valve 1/8BSP Ports

Part No	Description	Application
PSV/06/390	Pilot Valve	



5/2 Valve Bi-Stable 24v Double 6mm

Part No	Description	Application
PSV/06/395	Valve	Ventura



Valve Bi-Stable 24VDC Double 6mm

Part No	Description	Application
PSV/06/396	Valve	Ventura



Valve Bi-Stable 24VDC (No Conn)

Part No	Description	Application
PSV/06/397	Valve	Ventura



5/2 Bi-Stable Valve Assembly

Part No	Description	Application
PSV/06/135	Valve	Ventura



Door Valve

Part No	Description	Application
PSV/06/697	Door Valve	Ventura



Pneumatic Control Valve Solenoid/Pilot G 1/8

Part No	Description	Application
PSV/06/687	Valve	Ventura



5/2-way Valve, Bi-Stable, Female Thread G1/8

Part No	Description	Application
PSV/06/676	Valve	Ventura

PSV TRANSPORT SYSTEMS



OR Valve G1/8/6 Assembly

Part No	Description	Application
PSV/06/122	Valve	Ventura



5/2 Dump Valve

Part No	Description	Application
PSV/06/123	Dump Valve	Ventura



5/2 Valve 24VDC Solenoid Spring Return 1/8BSP and M5 Ports

Part No	Description	Application
PSV/06/124	Valve	Ventura



5/2 Interlocking Valve Solenoid Spring Return

Part No	Description	Application
PSV/06/125	Valve	Ventura



5/2 Valve Pilot-Spring Return 1/8BSP Ports

Part No	Description	Application
PSV/06/130	Valve	Ventura



5/2 Bi-Stable Valve Assembly

Part No	Description	Application
PSV/06/131	Valve	Ventura



OR Valve G1/8/4 Assembly

Part No	Description	Application
PSV/06/132	Valve	Ventura



5/2 VDMA 24VDC 1/8BSP Ports

Part No	Description	Application
PSV/06/118	Valve	Ventura



Pneumatic Base Control Unit

Part No	Description	Application
PSV/06/393	New	Ventura, Deans
PSV/06/393-R	Repair	Ventura, Deans



Pneumatic Control Assembly

Part No	Description	Application
PSV/06/127	Valve	Ventura



Pneumatic Control Assembly

Part No	Description	Application
PSV/06/121	Valve	Ventura



Valve Assembly

Part No	Description	Application
PSV/06/394	Valve	Ventura

DOOR VALVES

3.27

DOOR VALVES



Pneumatic Control Assembly MTS with Steel Fittings

Part No	Description	Application
PSV/06/133	Valve	Ventura



Pneumatic Assembly MTS

Part No	Description	Application
PSV/06/134	Valve	Ventura



Pneumatic Control Unit MTS Assembly

Part No	Description	Application
PSV/06/126	Valve	Ventura



Pneumatic Control Assembly MTS

Part No	Description	Application
PSV/06/129	Valve	Ventura



Solenoid Valve Assembly

Part No	Description	Application
PSV/06/725	Valve	Ventura



Pneumatic Control Assembly

Part No	Description	Application
PSV/06/677	Valve	Ventura



Bleed Valve Assembly

Part No	Description	Application
PSV/06/727	Valve	



Double Solenoid Valve

Part No	Description	Application
PSV/06/746	Valve	



Air to Atmosphere Spool Valve

Part No	Description	Application
PSV/06/105	Valve	



Door Valve

Part No	Description	Application
PSV/06/559	Door Valve	Masats



Spool Valve, 24V, 4 Way

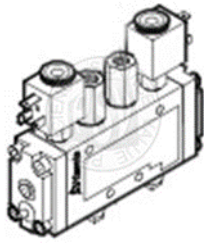
Part No	Description	Application
PSV/06/380	Valve	Peters



24V 5/2 Way Double Solenoid Valve, Bistable, 1/8" Pneumatic Connection

Part No	Description	Application
PSV/06/107	Valve	

PSV TRANSPORT SYSTEMS



Door Valve

Part No	Description	Application
PSV/06/557	New	Masats
PSV/06/586	Repair	Masats
PSV/06/558	Repair kit	Masats



Door Valve 5/2 with base

Part No	Description	Application
PSV/06/560	New	Masats
PSV/06/587	Repair	Masats
PSV/06/588	Repair Kit	Masats



24V 3/2 Way Valve Solenoid Valve, 1/8"

Part No	Description	Application
PSV/06/106	Normally Closed	TDS
PSV/06/103	Normally Open	TDS
PSV/06/104	Normally Closed	TDS



Low Pressure Diaphragm Valve Sensitive Edge

Part No	Description	Application
PSV/06/117	Valve	



Valve Complete with base

Part No	Description	Application
PSV/06/742	Valve	Deans



Valve without base

Part No	Description	Application
PSV/06/743	Valve	Deans



24V Normally Closed Solenoid Valve

Part No	Description	Application
PSV/06/111	Valve	Peters



24V Solenoid Valve

Part No	Description	Application
PSV/06/116	Valve	



Spool Valve Repair

Part No	Description	Application
PSV/06/378	Spool Valve	Peters, Deans

DOOR VALVES

3.29

DOOR VALVES



5/2 Solenoid Spring Valve

Part No	Description	Application
PSV/06/387	Valve	Deans



Pulse Generator

Part No	Description	Application
PSV/06/388	Valve	Deans



3 Way Pilot Valve

Part No	Description	Application
PSV/06/110	Valve	Peters



3 Way Pilot Valve

Part No	Description	Application
PSV/06/591	Valve	



Soft Start Valve, 1/4BSP-8mm

Part No	Description	Application
PSV/06/381	Valve	Peters



Normally Closed 3/2 Valve, Universal, 1/8SP M5 Ports

Part No	Description	Application
PSV/06/114	24v	Peters
PSV/06/115	12v	Peters



Solenoid Valve 5/2

Part No	Description	Application
PSV/06/570	Solenoid/ Solenoid	Tamware
PSV/06/571	Solenoid/ Dump	Tamware



EPV12V NC 3/2 Valve Universal 1/8BSP M5 Ports

Part No	Description	Application
PSV/06/382	Valve	Peters



Solenoid Valve

Part No	Description	Application
PSV/06/572	Valve	Masats



Solenoid coil,

Part No	Description	Application
PSV/14/603	Coil	



Solenoid DIN connector, black connector only, PG9

Part No	Description	Application
PSV/17/323	Connector	



Coil for Valve

Part No	Description	Application
PSV/06/744	Coil	

PSV TRANSPORT SYSTEMS



Soft Start Unit Door Valve

Part No	Description	Application
PSV/06/576	Valve	Tamware



Obstruction Detection Valve

Part No	Description	Application
PSV/06/274	Valve	Ventura



Obstruction Detection Unit

Part No	Description	Application
PSV/06/273	Valve	Ventura



4/2 Emergency Valve M10 X 1

Part No	Description	Application
PSV/06/119	Valve	Ventura, Peters



Rotary grip

Part No	Description	Application
PSV/06/120	Rotary Grip	Ventura, Peters



Emergency Valve Assembly 6mm Push in Con's

Part No	Description	Application
PSV/06/128	Valve	Ventura



Limiting Valve

Part No	Description	Application
PSV/06/386	Valve	Deans, TDS



Bleed Valve

Part No	Description	Application
PSV/06/102	Valve	Peters, Deans, Ventura



Roller Lever Switch

Part No	Description	Application
PSV/06/728	Valve	



Miniature Push Button Valve

Part No	Description	Application
PSV/06/109	Valve	Deans



Shuttle Valve

Part No	Description	Application
PSV/06/108	Valve	Peters



Dump Valve

Part No	Description	Application
PSV/06/383	Valve	Peters

DOOR VALVES

3.31

DOOR VALVES



Push Pull 5/2 Valve

Part No	Description	Application
PSV/06/392	Valve	Deans



Push Pull 5/2 Valve

Part No	Description	Application
PSV/06/392	Valve	Deans



Shuttle Valve

Part No	Description	Application
PSV/06/574	Valve	Masats



Solenoid Valve

Part No	Description	Application
PSV/06/573	Valve	Masats



Valve Restrictor

Part No	Description	Application
PSV/06/575	Restrictor	Tamware



U.D.V. Valve c/w Electric Switch

Part No	Description	Application
PSV/06/112	Standard Detection	Peters
PSV/06/113	Soft Detection	Peters



Reed Switch

Part No	Description	Application
PSV/06/166	Reed Switch	Peters



Magnetic Reed Switch

Part No	Description	Application
PSV/06/718	Reed Switch	Ventura



Sensor

Part No	Description	Application
PSV/06/701	Sensor	



3-Wire Normal Open Proximity Reed Switch

Part No	Description	Application
PSV/06/424	Reed Switch	Ventura



IGP Reed Switch with AMP Connection

Part No	Description	Application
PSV/06/270	Reed Switch	Ventura



Reed Switch

Part No	Description	Application
PSV/06/271	Reed Switch	Ventura



Reed Switch, 100mm Cable

Part No	Description	Application
PSV/06/726	Reed Switch	Ventura



Microswitch

Part No	Description	Application
PSV/06/275	Microswitch	Ventura



Microswitch

Part No	Description	Application
PSV/06/577	Microswitch	Masats



Reed Switch

Part No	Description	Application
PSV/06/165	Reed Switch	Peters



Sensor

Part No	Description	Application
PSV/06/696	Sensor	



Reed Switch 100V Normally Open

Part No	Description	Application
PSV/10/777	Reed Switch	

ELECTRICAL SWITCHES

3.33

ELECTRICAL SWITCHES



Microswitch K5

Part No	Description	Application
PSV/06/272	Microswitch	Ventura



Sensitive Edge Air Switch

Part No	Description	Application
PSV/06/229	Air Switch	Peters



Low Pressure Switch

Part No	Description	Application
PSV/06/178	Switch	Deans



Microswitch

Part No	Description	Application
PSV/06/775	Microswitch	Ventura



Microswitch with Lever

Part No	Description	Application
PSV/10/036	Microswitch	Deans



Omron V15-1C5 Microswitch

Part No	Description	Application
PSV/06/403	Microswitch	Peters



Sensor

Part No	Description	Application
PSV/06/701	Sensor	



3/2 Pneumatic Manual Control Valve

Part No	Description	Application
PSV/06/704	Valve	



Microswitch Assembly

Part No	Description	Application
PSV/06/407	Microswitch	Deans



Reed Switch Mounting Bracket

Part No	Description	Application
PSV/06/668	Bracket	



Magnetic Reed Switch

Part No	Description	Application
PSV/06/702	Reed Switch	



Microswitch Operating Rod

Part No	Description	Application
PSV/06/230	Rod	Deans



Double Pole Microswitch

Part No	Description	Application
PSV/06/176	Microswitch	Peters



Single Pole Microswitch

Part No	Description	Application
PSV/06/176	Microswitch	Peters



Single pole Base

Part No	Description	Application
PSV/06/405	Base	Peters



Single Pole Plug In Relay

Part No	Description	Application
PSV/06/402	Relay	Peters



Motor 12v, Fork End

Part No	Description	Application
PSV/06/398	Motor	Peters, Deans



24v Door Lock Motor

Part No	Description	Application
PSV/06/399	Motor	Peters



Medium Duty Foot Switch, 6A, 250A

Part No	Description	Application
PSV/10/061	Foot Switch	TDS



Mini Buzzer, 24v

Part No	Description	Application
PSV/11/016	Buzzer	TDS



DC Relay Plug In

Part No	Description	Application
PSV/06/400	24V	Peters
PSV/06/401	12V	Peters



Sleeved Cable Grommet, 6.3mm Cable Hole

Part No	Description	Application
PSV/06/406	Grommet	Peters

ELECTRICAL SWITCHES

3.35

DOOR CONTROLLERS



Description	New Part Number	Repair Part Number
VCAN Door Control Unit	PSV/06/216-V45315	PSV/06/216-V45315-R
VCAN Door Control Unit	PSV/06/216-V45782	PSV/06/216-V45782-R
VCAN Door Control Unit	PSV/06/216-V47427	PSV/06/216-V47427-R
VCAN Door Control Unit	PSV/06/216-V47643	PSV/06/216-V47643-R
VCAN Door Control Unit	PSV/06/216-V47461	PSV/06/216-V47461-R
VCAN Door Control Unit	PSV/06/216-V47782	PSV/06/216-V47782-R
VCAN Door Control Unit	PSV/06/216-V48474	PSV/06/216-V48474-R



Door Control Processor



Electrical Control Unit

Part No	Description	Application	Part No	Description	Application
PSV/06/543	New	Deans	PSV/06/276	New	Ventura
PSV/06/544	Repair	Deans	PSV/06/276-R	Repair	Ventura



Filter Regulator 1/4BSP Manual Drain

Part No	Description	Application
PSV/06/457	Regulator	Peters



Filter Regulator Assembly

Part No	Description	Application
PSV/06/458	Regulator	Deans, TDS



Filter Regulator Assembly

Part No	Description	Application
PSV/06/174	8mm	Ventura
PSV/06/175	6mm	Ventura



Universal Filter Regulator

Part No	Description	Application
PSV/06/167	Regulator	Peters, Deans, TDS, Ventura



Filter Regulator

Part No	Description	Application
PSV/06/169	Regulator	TDS



Pressure Regulator Assembly with Bracket

Part No	Description	Application
PSV/06/462	Regulator	Deans



Filter Regulator

Part No	Description	Application
PSV/06/655	Regulator	



Filter Regulator

Part No	Description	Application
PSV/06/675	Regulator	



Filter Regulator Valve

Part No	Description	Application
PSV/06/667	Regulator	



Filter unit (5.0 micros)

Part No	Description	Application
PSV/06/689	Regulator	



Pressure gauge - 43mm diameter, rear entry, 0 to 12 bar

Part No	Description	Application
PSV/07/743	Gauge	



Filter Regulator Assembly 6mm 1/4 BSP

Part No	Description	Application
PSV/06/763	Regulator	

REGULATORS

3.37

MISC ELECTRICAL



Boda Filter

Part No	Description	Application
PSV/06/579	Filter	Masats



Pressure Switch

Part No	Description	Application
PSV/06/461	Switch	Deans



Pressure Cut-out Switch 2.0 +/- 0.2 Bar M12 x 1.5

Part No	Description	Application
PSV/06/170	Switch	Ventura



Pressure Cut-in Switch

Part No	Description	Application
PSV/06/171	4.0 +/- 0.4 Bar M12 x 1.5	Ventura
PSV/06/172	2.0 +/- 0.2 Bar M12 x 1.5	Ventura



Air Pressure Gauge

Part No	Description	Application
PSV/06/168	Gauge	Peters



Potentiometer

Part No	Description	Application
PSV/06/268	125 Degree	Ventura
PSV/06/269	180 Degree	Ventura



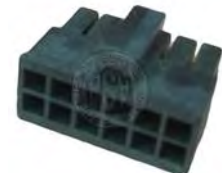
Potentiometer

Part No	Description	Application
PSV/06/694	Potentiometer	Ventura



Front Door Potentiometer

Part No	Description	Application
PSV/06/749	Potentiometer	Ventura



Connector Molex Receptacle

Part No	Description	Application
PSV/06/420	Connector	Ventura



Contact Molex

Part No	Description	Application
PSV/06/421	Female	Ventura
PSV/06/422	Male	Ventura



Spiral Cable Assembly

Part No	Description	Application
PSV/06/423	Cable	Ventura



Spiral Cable Assembly

Part No	Description	Application
PSV/06/426	Cable	Ventura



Part Number	Description	Length
PSV/06/410	Sensitive Edge	1930mm
PSV/06/411	Sensitive Edge	1870mm
PSV/06/412	Sensitive Edge	1980mm
PSV/06/413	Sensitive Edge	1840mm
PSV/12/453	Sensitive Edge	1895mm
PSV/06/414	Sensitive Edge	1955mm
PSV/06/415	Sensitive Edge	2030mm
PSV/06/277	Sensitive Edge	1760mm
PSV/06/416	Sensitive Edge	1715mm
PSV/06/417	Sensitive Edge	1800mm
PSV/06/418	Sensitive Edge	2000mm
PSV/06/419	Sensitive Edge	1850mm

Can't find what you're looking for or unsure of an application?

Contact a member of our sales team and we'll be happy to help. Our cross reference database includes thousands of vehicle manufacturer and original equipment references



DOOR BRUSHES AND SEALS

3.39

DOOR BRUSHES AND SEALS



Part Number	Hand	Length	Brush Height	Material
PSV/06/181	Right	585mm	56mm	Steel
PSV/06/182	Left	585mm	56mm	Steel
PSV/06/183	Right	585mm	68mm	Steel
PSV/06/184	Left	585mm	68mm	Steel
PSV/06/185	Right	618mm	68mm	Steel
PSV/06/186	Left	618mm	68mm	Steel



Part Number	Hand	Length	Brush Height	Material
PSV/06/279	Right	544mm	86mm	Steel
PSV/06/278	Left	544mm	86mm	Steel



Part Number	Hand	Length	Brush Height	Material
PSV/06/280	Right	571mm	68mm	Steel
PSV/06/281	Left	571mm	68mm	Steel



Part Number	Hand	Length	Brush Height	Material
PSV/06/282	Right	335mm	75mm	Steel
PSV/06/283	Left	335mm	75mm	Steel



Part Number	Hand	Length	Brush Height	Material
PSV/06/136	Right	528mm	64mm	ABS
PSV/06/137	Left	528mm	64mm	ABS
PSV/06/140	Right	548mm	64mm	ABS
PSV/06/141	Left	548mm	64mm	ABS



Part Number	Hand	Length	Brush Height	Material
PSV/06/138	Right	528mm	51mm	ABS
PSV/06/139	Left	528mm	51mm	ABS
PSV/06/142	Right	528mm	57mm	ABS
PSV/06/143	Left	528mm	57mm	ABS
PSV/06/144	Right	500mm	57mm	ABS
PSV/06/145	Left	500mm	57mm	ABS

PSV TRANSPORT SYSTEMS



Door Brush 1M Length

Part No	Description	Application
PSV/06/240	Door Brush	Ventura



Door Bush 50mm

Part No	Description	Application
PSV/20/089	Door Brush	Ventura



Brush Holder Assembly

Part No	Description	Application
PSV/06/242	544 x 50mm	Ventura
PSV/06/241	564 x 73mm	Ventura



Sabot Assembly, Versa Forward Door, Solo Rearward Door

Part No	Description	Application
PSV/06/563	Sabot	TDS



Sabot Assembly 475mm Length (Bottom) 420mm Length (Fixing)

Part No	Description	Application
PSV/06/564	Sabot	TDS



Sabot Assembly, 475mm Length (Bottom), 420mm Length (Fixing)

Part No	Description	Application
PSV/06/564	Sabot	TDS



Active Flap Assembly, 340mm Length

Part No	Description	Application
PSV/06/561	Flap Assembly	TDS



Sabot Assembly, 345mm Length

Part No	Description	Application
PSV/06/565	Sabot	TDS



Active Flap Assembly

Part No	Description	Application
PSV/06/494	Left	Deans
PSV/06/495	Right	Deans



Positive Seal Assembly

Part No	Description	Application
PSV/06/483	Left	Deans
PSV/06/484	Right	Deans



Positive Seal Assembly

Part No	Description	Application
PSV/12/393	Left	Deans
PSV/12/394	Right	Deans



Positive Seal Assembly

Part No	Description	Application
PSV/06/485	Left	Deans
PSV/06/486	Right	Deans

DOOR BRUSHES AND SEALS

3.41

DOOR BRUSHES AND SEALS



Positive Seal Assembly 540mm

Part No	Description	Application
PSV/06/487	Right	Deans
PSV/06/488	Left	Deans



Active Flap Assembly, 495mm Length

Part No	Description	Application
PSV/06/562	Active Flap	TDS



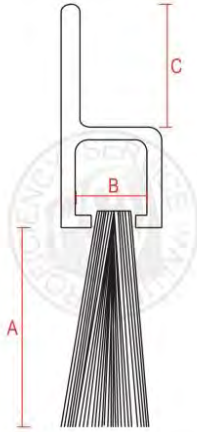
Active Flap Spring

Part No	Description	Application
PSV/06/764	Spring	Ventura

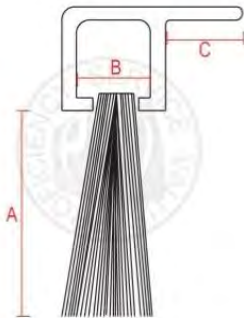


Part Number	Height (A)	Width (B)	Length
PSV/06/293	22mm	4mm	2600mm
PSV/06/294	25mm	4mm	2600mm
PSV/06/295	32mm	4mm	2600mm
PSV/06/296	38mm	4mm	2600mm
PSV/06/297	45mm	4mm	2600mm
PSV/06/298	51mm	4mm	2600mm
PSV/06/299	57mm	4mm	2600mm
PSV/06/300	64mm	4mm	2600mm
PSV/06/301	70mm	4mm	2600mm
PSV/06/302	76mm	4mm	2600mm
PSV/06/303	40mm	8mm	2000mm
PSV/06/304	50mm	8mm	2000mm
PSV/06/305	80mm	8mm	2000mm

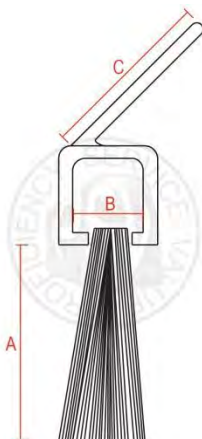
PSV TRANSPORT SYSTEMS



Part Number	Height (A)	Width (B)	Carrier (C)	Length
PSV/06/306	20mm	4mm	10mm	2000mm
PSV/06/307	25mm	4mm	10mm	2000mm
PSV/06/308	20mm	5mm	15mm	2000mm
PSV/06/309	25mm	5mm	15mm	2000mm
PSV/06/310	35mm	5mm	15mm	2000mm
PSV/06/311	50mm	5mm	15mm	2000mm
PSV/06/312	75mm	5mm	15mm	2000mm
PSV/06/324	40mm	8mm	20mm	2000mm
PSV/06/314	50mm	8mm	20mm	2000mm
PSV/06/315	75mm	8mm	20mm	2000mm



Part Number	Height (A)	Width (B)	Carrier (C)	Length
PSV/06/285	20mm	4mm	15mm	2500mm
PSV/06/286	25mm	4mm	15mm	2500mm
PSV/06/287	35mm	5mm	15mm	2500mm
PSV/06/288	50mm	5mm	15mm	2500mm
PSV/06/289	75mm	5mm	15mm	2500mm
PSV/06/290	40mm	8mm	20mm	2500mm
PSV/06/291	50mm	8mm	20mm	2500mm
PSV/06/292	75mm	8mm	20mm	2500mm



Part Number	Height (A)	Width (B)	Carrier (C)	Length
PSV/06/316	20mm	5mm	15mm	2500mm
PSV/06/317	25mm	5mm	15mm	2500mm
PSV/06/318	35mm	5mm	15mm	2500mm
PSV/06/319	50mm	5mm	15mm	2500mm
PSV/06/320	75mm	5mm	15mm	2500mm
PSV/06/321	40mm	8mm	20mm	2500mm
PSV/06/322	50mm	8mm	20mm	2500mm
PSV/06/323	75mm	8mm	20mm	2500mm

DOOR BRUSHES AND SEALS

3.43

DOOR RUBBER PROFILES



Bottom Sensitive Edge

Part No	Description	Application
PSV/06/665		Ventura



Side Sensitive Edge

Part No	Description	Application
PSV/06/664	Sensitive Edge	Ventura



Door Rubber 2.3M Length

Part No	Description	Application
PSV/06/233	Rubber	Ventura



Flap Bottom Rubber 1M Length

Part No	Description	Application
PSV/06/238	Rubber	Ventura



Flap Top Rubber 1M Length

Part No	Description	Application
PSV/06/239	Rubber	Ventura



Weather Seal Assembly, Front Door

Part No	Description	Application
PSV/06/497	Rubber	Ventura



Portal Rubber U Profile 1290mm

Part No	Description	Application
PSV/06/498	Rubber	Ventura



Portal Rubber U Profile 1350mm

Part No	Description	Application
PSV/06/496	Rubber	Ventura



Flap Assembly Right

Part No	Description	Application
PSV/06/499	Flap	Ventura



Door Seal Middle (PS) 2.2M Length

Part No	Description	Application
PSV/06/235	Left Cut Out	Ventura
PSV/06/236	Right Cut Out	Ventura



End Rubber Profile 2.3M Length

Part No	Description	Application
PSV/06/231	Rubber	Ventura



Vehicle Aperture Lipped Seal 50 x 50mm, 2.5M Long

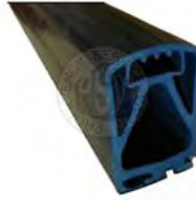
Part No	Description	Application
PSV/06/468	Seal	TDS

PSV TRANSPORT SYSTEMS



Door Seal Middle (IG) 2.3M Length

Part No	Description	Application
PSV/06/237	Seal	Ventura



Door Seal Middle (PS) 2.2m Length, No Cutout

Part No	Description	Application
PSV/06/234	Seal	Ventura



Extrusion 2.5M Length

Part No	Description	Application
PSV/06/493	Extrusion	Deans



Plain Nosing Rubber 2.1M

Part No	Description	Application
PSV/12/399	Rubber	Deans



Lipped Nosing Rubber 2.1M

Part No	Description	Application
PSV/12/451	Rubber	Deans



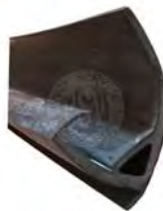
Plain Nose Rubber

Part No	Description	Application
PSV/06/475	Rubber	Peters



Lipped Nose Rubber Euro

Part No	Description	Application
PSV/06/474	Rubber	Peters



Seal Retaining Plate 2200 x 20mm

Part No	Description	Application
PSV/06/467	Seal	Deans



40mm Snap On Seal

Part No	Description	Application
PSV/06/479	Seal	Peters



Glazing Insert 2.5M

Part No	Description	Application
PSV/06/491	Insert	Deans

DOOR RUBBER PROFILES

3.45

DOOR RUBBER PROFILES



Outer Lower Seal Assembly

Part No	Description	Application
PSV/06/476	Seal	Peters



Outer Rubber Flap Assembly

Part No	Description	Application
PSV/06/477	Seal	Peters



Outer Seal Flap Assembly

Part No	Description	Application
PSV/06/478	Seal	Peters



Draught Sealing Band

Part No	Description	Application
PSV/06/492	Seal	Deans



Lower Vane Seal 38 x 482mm

Part No	Description	Application
PSV/06/481	Seal	Deans



Cover Seal

Part No	Description	Application
PSV/06/489	Seal	Deans



Active Vane Seal 106 x 493mm

Part No	Description	Application
PSV/06/482	Seal	Deans



Rubber Strip, 68 x 3mm

Part No	Description	Application
PSV/06/469	1 Metre	Peters
PSV/06/470	10 Metre	Peters



**Door Shaft Rubber Seal
75 x 68mm**

Part No	Description	Application
PSV/06/471	Seal	Peters



Euro Rubber Foam Bung

Part No	Description	Application
PSV/06/472	Foam Bung	Peters



Rubber Grommet Door Stop

Part No	Description	Application
PSV/06/473	Grommet	Deans



Rubber Boot

Part No	Description	Application
PSV/06/480	Rubber Boot	Deans

PSV TRANSPORT SYSTEMS



Glass Sealing Tape

Part No	Description	Application
PSV/06/232	Tape	Ventura



Glazing Rubber Section 2.5M

Part No	Description	Application
PSV/06/490	Rubber	Deans



Bottom Band Seal with Left and Right Holes

Part No	Description	Application
PSV/06/758	Rubber	Deans

DOOR RUBBER PROFILES

3.47