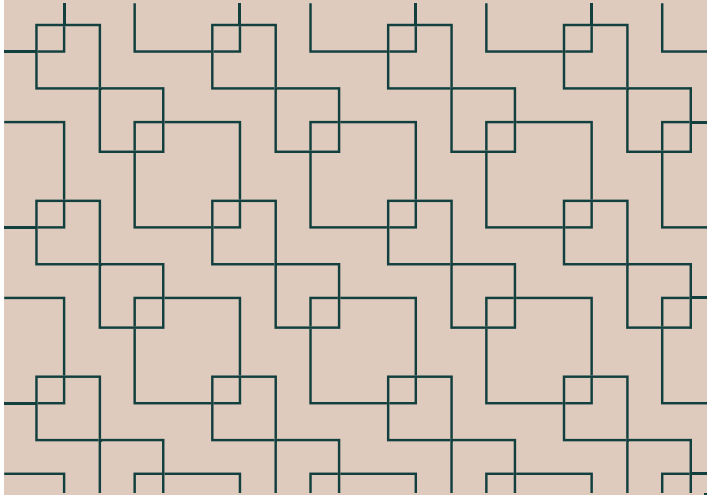


# Carpet DIY - Luxury Carpet Tile - LCT



## Getting Started

These simple steps will make you a Carpet DIY master. Keep in mind, your Carpet DIY Luxury Carpet Tile (LCT) is not designed to go over carpeted floors or carpet padding. LCT is designed to cover existing hard surface flooring or sub-floor.

### Tools You Will Need

- Broom & dust pan
- Vacuum
- Tape measure
- T- square
- Marker
- Metal straight edge
- Utility knife
- Safety gloves

### Choose Your Installation Method

- FriXion Pads (Recommended)
- Double-Stick Tape
- Full Spread Adhesives
- Spray Adhesive

Your Choice of installation method will require the purchase of the installation materials listed above.

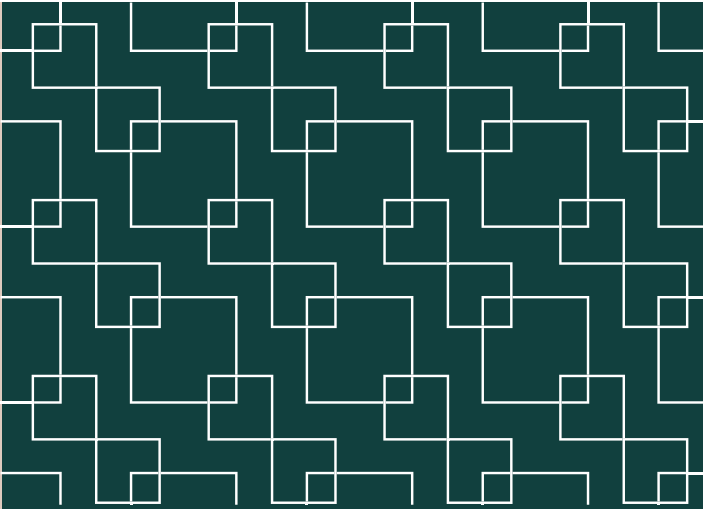
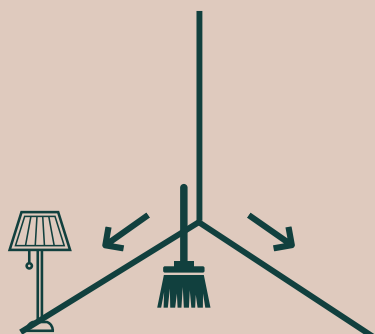
We recommend dry fitting the room and making cuts before applying a permanent or semi-permanent installation method.

### Installation Site Requirements

Sweep the floors and ensure they are free of dust, dirt, oil, grease, paint, curing agents, concrete sealers, loosely bonded toppings, loose particles, and any other substance

Acceptable substrates include:

- Previously installed hard surface flooring
- Plywood
- Underlayment grade particle board
- OSB
- Gypsum
- Concrete



Instructions for Use

## Luxury Carpet Tile

LCT



## LCT Install

### Step 1 - Prepare your space

Required tools - Broom & dust pan

Inspect your Carpet DIY Luxury Carpet Tile (LCT) prior to installation. Carpet DIY is not liable if defective product is installed. Please contact the seller to provide replacement materials if a tile is damaged.

### Installation Site Requirements

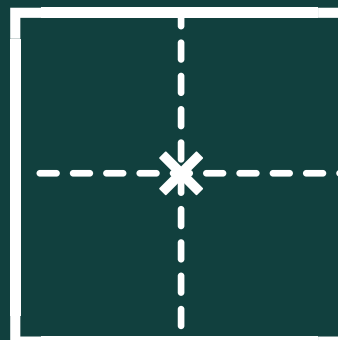
Proper installation depends on the proper site conditions. The following HVAC conditions must be maintained for 24 hours prior to, during, and permanently after installation:

- Temperature: The installation site, carpet must remain between 55° F & 85° F
- Humidity: The installation site's ambient relative humidity should not fall below 40% or exceed 70%

The existing hard surface floor must be structurally sound, clean, dry, and level within 3/16" before you begin.

### Step 2 - Measure

Required tools - Tape measure & marker

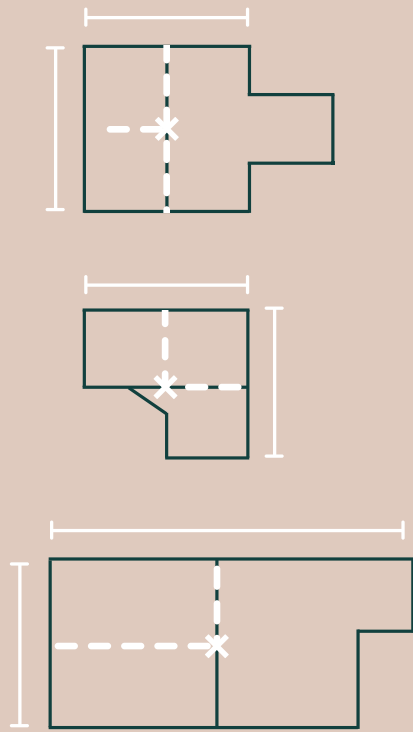


Start installation as close to the center of the room as possible. To find the center of the room, follow the steps below:

- Locate the two longest, straightest walls.
- Use the tape measure to find the center of each wall.
- Measure a line from the center of each wall until the lines intersect. This will be the center of the room. Mark the center.
- Lay the straight edge along one axis near the center of the room as a guide.

### Installation Tip

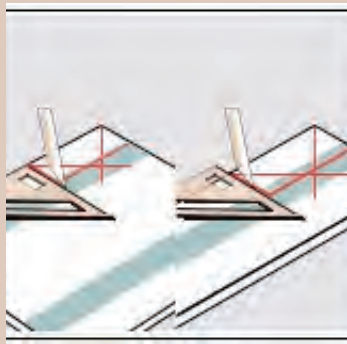
If you have a straight wall without a door way you can skip this step. Make sure that all of the tiles in the first row of LCT is in line with one another.



### Step 4 - Make the cuts

Required tools - Metal straight edge, utility knife, safety gloves, vacuum

- Tiles must fit closely, but not be compressed.
- Stagger the end joints of each adjacent row no less than 12 inches.
- Cut pieces to fill in along the walls. Be mindful of your arrows and leave the cut edges to the wall.



- Measure and cut tiles from the back using a metal straight edge. Ensure arrows are pointing in the correct direction.
- Be sure to cut your tiles on a protected hard surface.
- Once all of your cuts are made and your space is completely covered you may begin to finalize your installation.



### Using Double-Stick Tape

After dry fitting the space and making your cuts, begin finding your seams. Start with the end joint closest to one wall. Lift the end joints and sides of each tile, placing 6"- 8" strips near each corner and along each side. Be careful not to place the yarn into the adhesive.



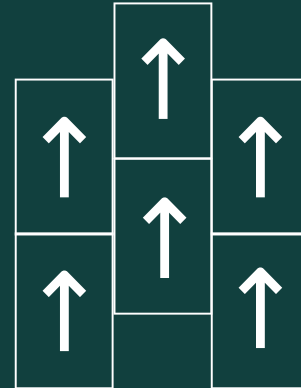
### Using Spray Adhesive or Full Spread Adhesive

Please follow the spread rate, working times, and application guidelines located on each adhesive container. Please observe the approved substrates and conditions, as they may differ from Carpet DIY Luxury Carpet Tile (LCT).

### Step 3 - Layout your space

No tools required

- Each tile has directional arrows on the back. These arrows allow for one-directional or multi-directional installation.
- Start in the center of the room, along the straight edge, or begin on a straight wall. Lay out the tiles using the directional arrows on the back of each tile.
- Slide tiles into position to prevent yarn from being trapped between the tiles. Trapped yarn will adversely affect the appearance of the installation and will cause alignment problems.
- As you approach the walls, you will have tiles that are too long or too short. Those will be cut in the next step for a perfect fit.

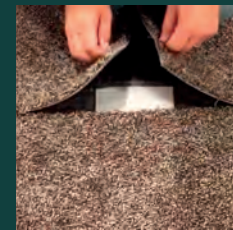


- Follow the installation process of your choice, FriXon Pads, Double-sided Tape, Spray Adhesive or Full Spread Adhesive
- Vacuum the entire space and replace furniture. Note, be careful not to slide your furniture, but to lift and place in its intended location.



### Using FriXion Pads

After dry fitting the space and making your cuts, begin finding your seams. Lift each side of the LCT where it meets an end joint.



Position the FriXion Pads under the carpet tile with the hooks facing up. Note, if you are using the adhesive on the back of the FriXion Pads you will need to peel the film just before this step. Be careful to keep the yarn out of the glue as you place the FriXion Pads under each end and side joint.

### Step 4 -Love your new space

Congratulations! You have completed your Carpet DIY LCT installation. There is nothing left to do but enjoy your beautiful new space!



Carpet DIY - Luxury Carpet Tile - LCT