

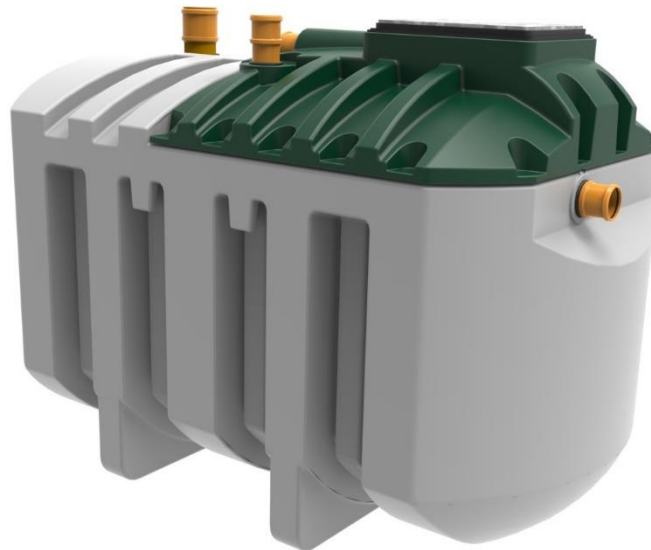
Harlequin® HydroClear

SEWAGE TREATMENT PLANT

HydroClear HC6 Wastewater Treatment Plant

HydroClear represents significant progress for the domestic wastewater treatment industry.

Contemporary design engineering and analysis software and state-of-the-art manufacturing facilities combine to create this unique product which dominates the sewage treatment plant market with class-leading pollutant removal level of 97%.



Standard Features:

- ◆ Tank body moulded in one piece from durable medium density polyethylene material
- ◆ 110mm inlet and outlet connections
- ◆ Integrated lifting eyes for ease of handling and installation
- ◆ Fully secured 600x450mm pedestrian duty, flush fitting manhole cover comply with statutory regulations
- ◆ Above ground air blower housing delivers more reliable and efficient operation, and allows easy access for maintenance
- ◆ Easy access to the bubble diffuser within the tank
- ◆ Virtually silent operation
- ◆ Cost effective installation
- ◆ 24 month service period reduces operating costs
- ◆ HydroClear owners can determine their own de-sludge intervals giving potential cost savings
- ◆ Mechanically reliable with no moving parts or electrics within the tank
- ◆ Certified to EN12566-3

Harlequin® HydroClear

SEWAGE TREATMENT PLANT

HydroClear HC6 Wastewater Treatment Plant

Optional Equipment:

- ◆ Air blower function alarm
- ◆ Pumped outlet
- ◆ 300mm manhole riser(s). Max 3 risers on a gravity tank or 2 risers on a pumped outlet⁺
⁺ *Maximum invert level 2m. Use 1200mm concrete rings to achieve inverts below max. number of risers.*

Technical Data:

	<i>Efficiency</i>	<i>Effluent</i>
Treatment Efficiency	COD	91.2%
	BOD ₅	96.6%
	NH ₄ -N	85.8%
	SS	94.7%
Nominal hydraulic daily load	1,200Litres / day	
Nominal organic daily load	360g BODs / day	
Inhabitants served	1 - 6	
Desludging interval	12 months *	
Electrical consumption	1.8 kWh / day	
Power requirements	230V 76W 1.0A (start-up current)	
Volumes (at operational height)	Primary settlement – 2510 Litres Aeration chamber – 1305 Litres Final settlement – 955 Litres	
Overall dimensions	L 2900 W 1620 H 2000 mm	
Standard inlet depth	500 mm	
Standard outlet depth	630 mm	
Depth from invert to base	1500 mm	
Pipe diameter	110 mm	
Net Weight	430 kg	

* *de-sludge interval up to 12 months depending on the number of inhabitants*

Issued By:

Harlequin Manufacturing Limited
21 Clarehill Road, Moira, Co. Armagh, N.Ireland, BT67 OPB
T: +44 (0)28 9261 1077
W: www.harlequin-mfg.com
E: info@harlequin-mfg.com