

THIS DRAWING IS COPYRIGHT AND IS ISSUED ON CONDITION THAT IT IS NOT COPIED, REPRODUCED OR DISCLOSED TO A THIRD PARTY WITHOUT CONSENT IN WRITING OF HARLEQUIN MANUFACTURING LTD.



ALL DIMENSIONS IN MILLIMETRES UNLESS STATED OTHERWISE - DO NOT SCALE IF IN DOUBT - ASK

### HYDROCLEAR 40 POP

#### SYSTEM GENERAL ASSEMBLY

#### PRODUCT FEATURES:

- Ø160mm STANDARD PVC INLET AND OUTLET PIPES
- AIR COMPRESSOR
- AIR DIFFUSER
- ELECTRICAL ISOLATOR SWITCH
- BIO-MEDIA
- SLING POINTS

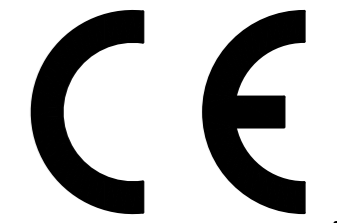
#### MATERIALS CONTAINMENT:

- WASTE WATER [NON-INDUSTRIAL]

#### TECHNICAL INFORMATION:

- TANKS -
 

	VOLUMES	WEIGHTS
- PRIMARY SETTLEMENT -	6400litres	400kg
- AERATION CHAMBER -	4800litres	
- FINAL SETTLEMENT CHAMBER -	3720litres	790kg
- POWER REQUIREMENTS -
  - 230V
  - 216W
  - 2.1A [START-UP CURRENT]



#### GENERAL NOTES:

- ACCREDITED TO BS EN 12566-3
- CE TREATMENT EFFICIENCY

	EFFICIENCY	FINAL EFFLUENT
COD	91.2%	59mg/l
BOD5	96.6%	11mg/l
NH4-N	85.8%	4.5mg/l
SS	94.7%	19mg/l

- INVERT DEPTHS ARE REDUCIBLE TO A MINIMUM OF 750mm CONTACT HARLEQUIN FOR DETAILS
- 525mm DEEP TURRET EXTENSION PIECES AVAILABLE ON REQUEST
- FOR INSTALLATION AND OPERATION GUIDELINES FOLLOW INSTRUCTIONS SUPPLIED IN TANK

ALL MEASUREMENTS ARE FOR REFERENCE ONLY  
 HARLEQUIN MANUFACTURING RESERVE THE RIGHT TO REVISE THEIR PRODUCT DESIGNS AND SUPPORTING INFORMATION AT ANY TIME

02	REISSUE, HARLEQUIN MFG UPDATE	FG	JC	LC	01/12/16
01	FIRST ISSUE	SI	BB	BB	27/10/08
ISSUE	MODIFICATION	BY	CHK	APV	DATE

HARLEQUIN MANUFACTURING LTD  
 21 Clarehill Road, Moira, BT67 0PB  
 Email: info@harlequin-mfg.com  
 Web: www.harlequin-mfg.com

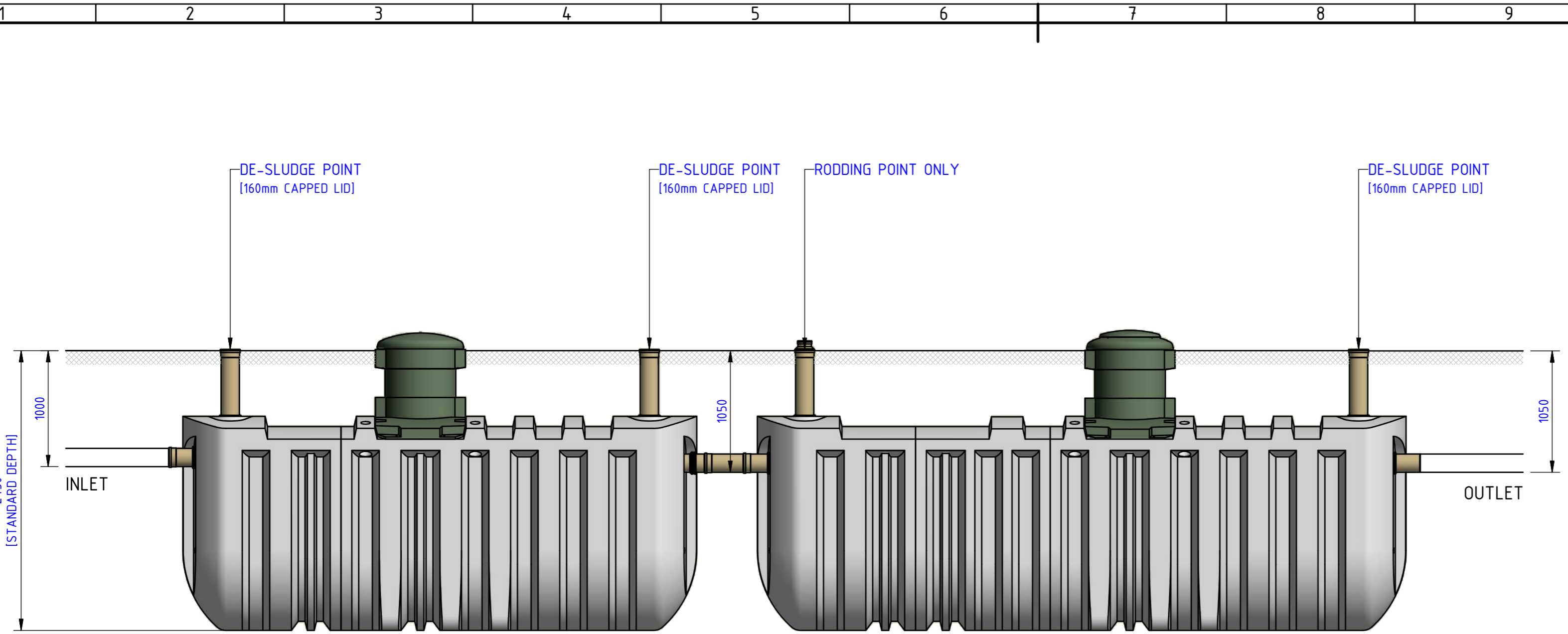
SEWAGE TREATMENT PLANT

CLIENT: HARLEQUIN MANUFACTURING PROJECT No.:

DRAWING TITLE: HYDROCLEAR POP 40: 40 POPULATION SYSTEM GENERAL ASSEMBLY

DRAWN BY: F. GRIBBEN CHECKED BY: JC APPROVED BY: LC DRAWING No.:

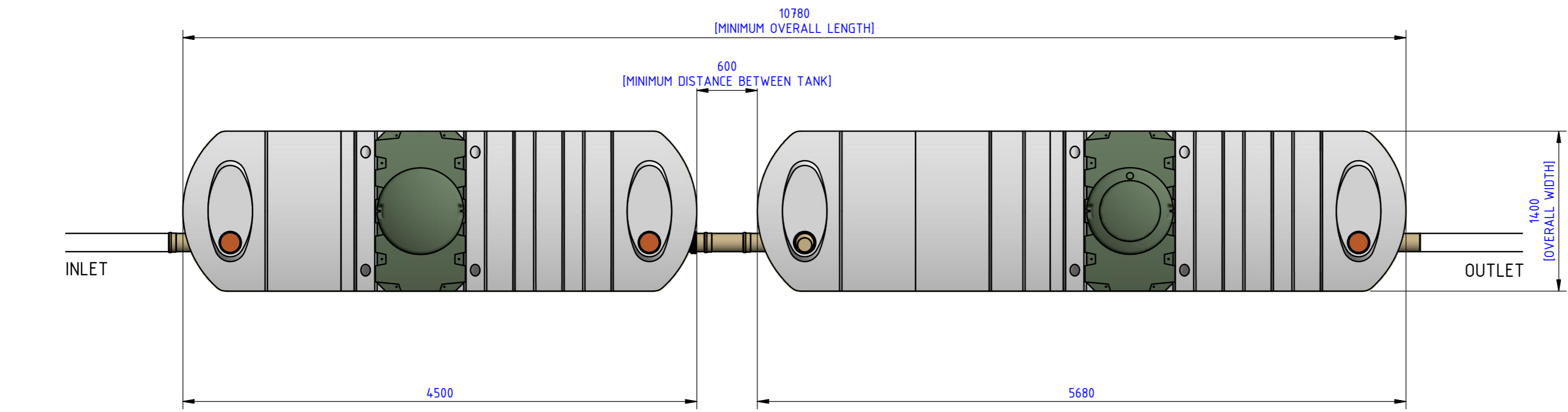
SCALE: 1:25 DATE: DEC 2016 SHEET SIZE: A2 JOB No.:



SIDE ELEVATION

PRIMARY TANK [TANK 1]  
 INDIVIDUAL DRAWING PAGE 2

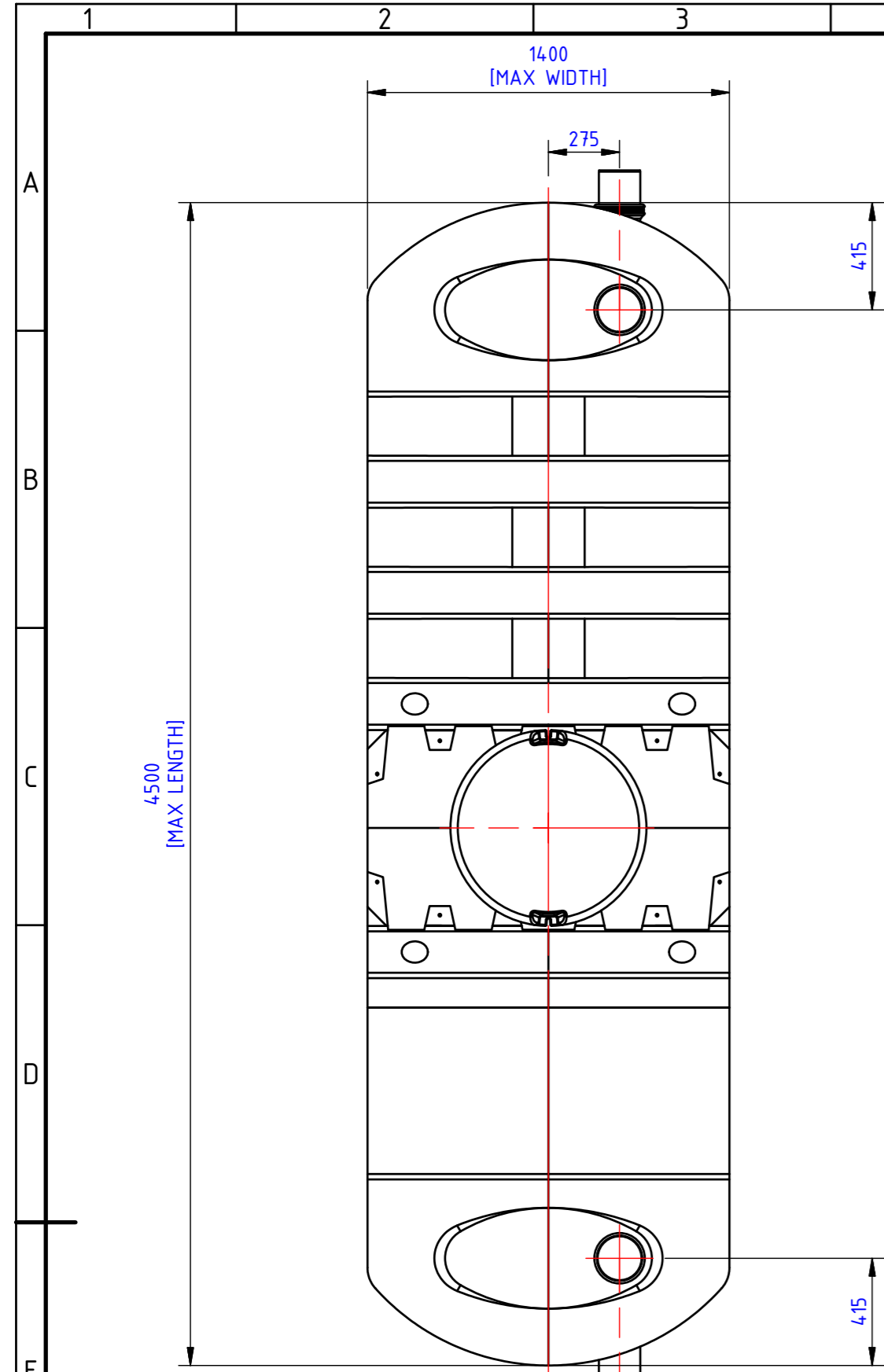
AERATION / FINAL SETTLEMENT TANK [TANK 2]  
 INDIVIDUAL DRAWING PAGE 3



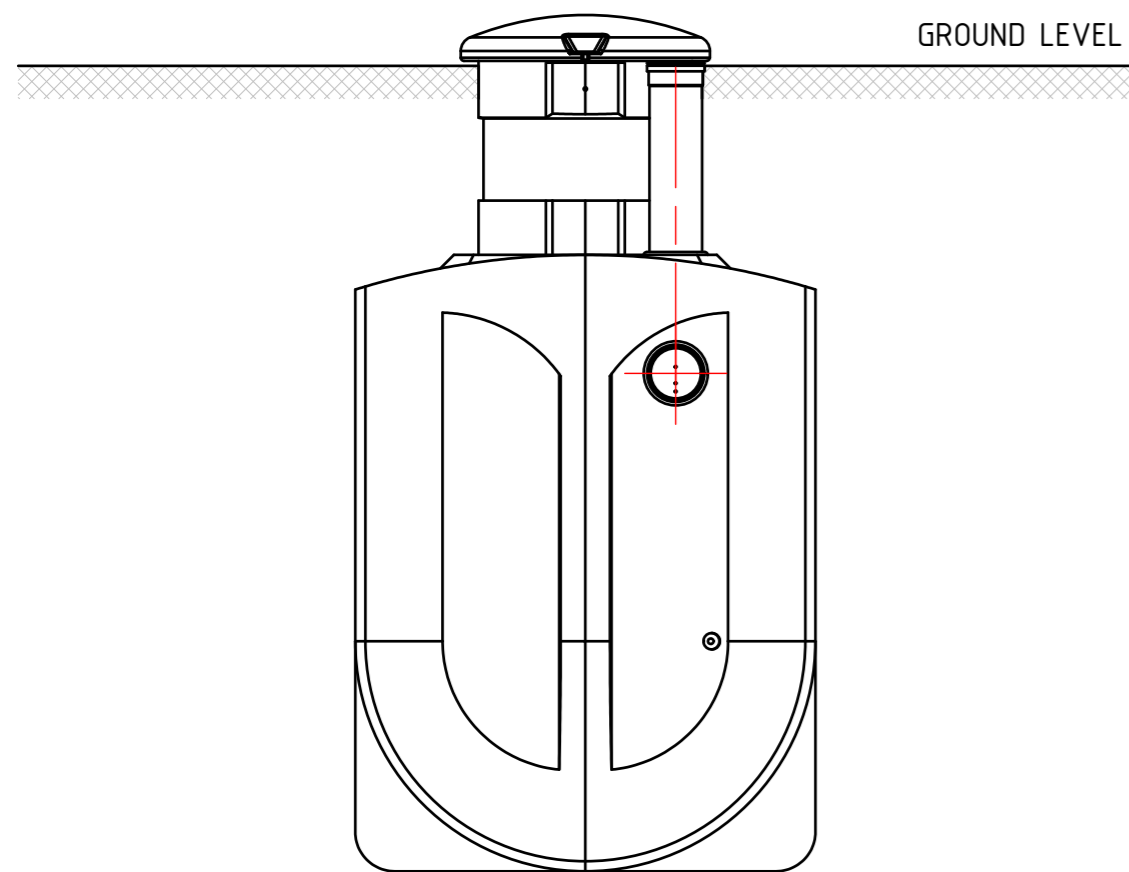
PLAN

**INSTALLATION:**

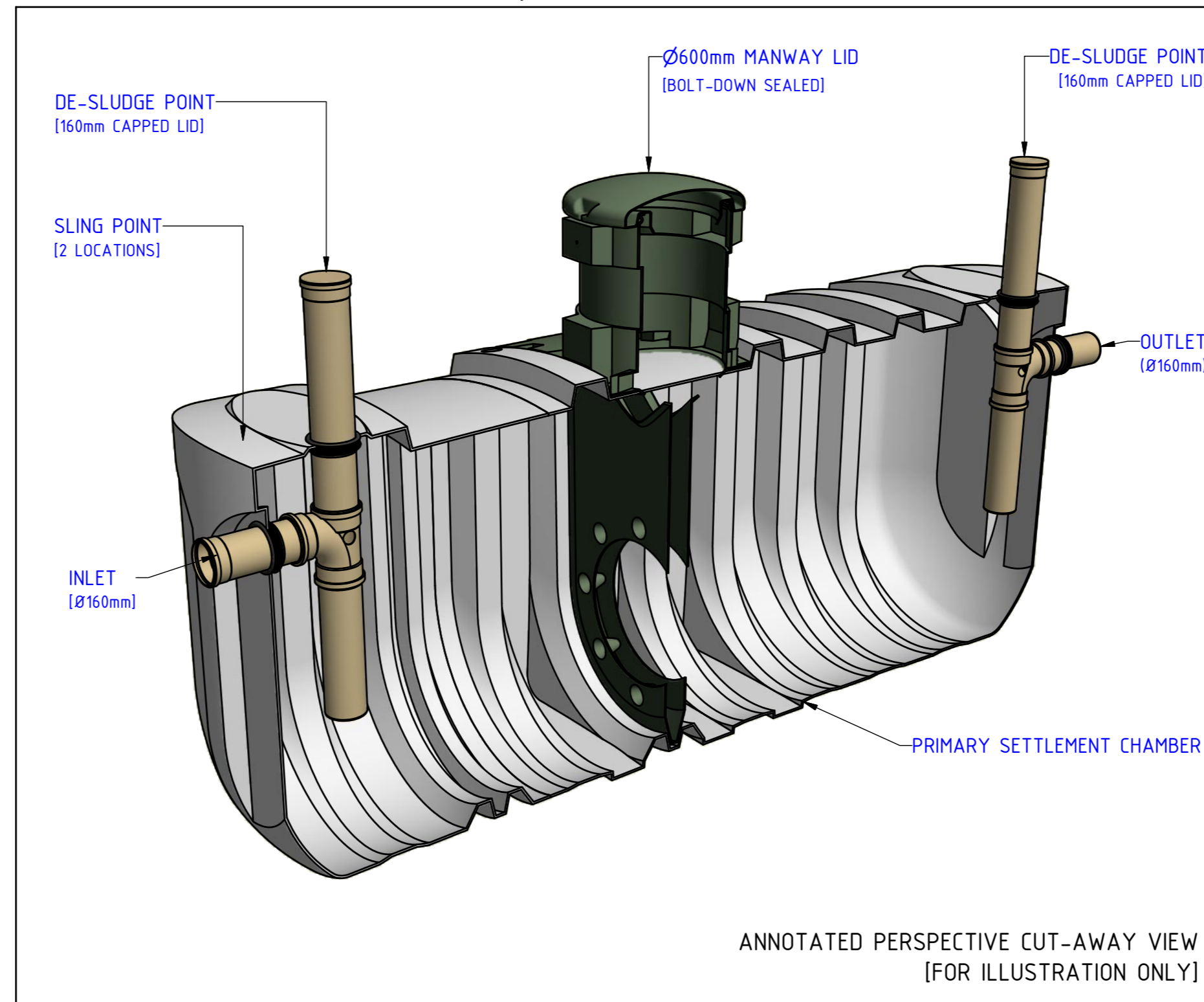
- REFER TO INSTALLATION INSTRUCTIONS FOR SPECIFIC INSTALLATION REQUIREMENTS
- TANKS ORDER MUST BE MAINTAINED. ALTERNATIVE TANK ALIGNMENTS TO THAT SHOWN ARE POSSIBLE TO SUIT SPECIFIC SITE REQUIREMENTS
- ENSURE INTERCONNECTING PIPEWORK HAS RODDING ACCESS AT ALL PIPE BENDS



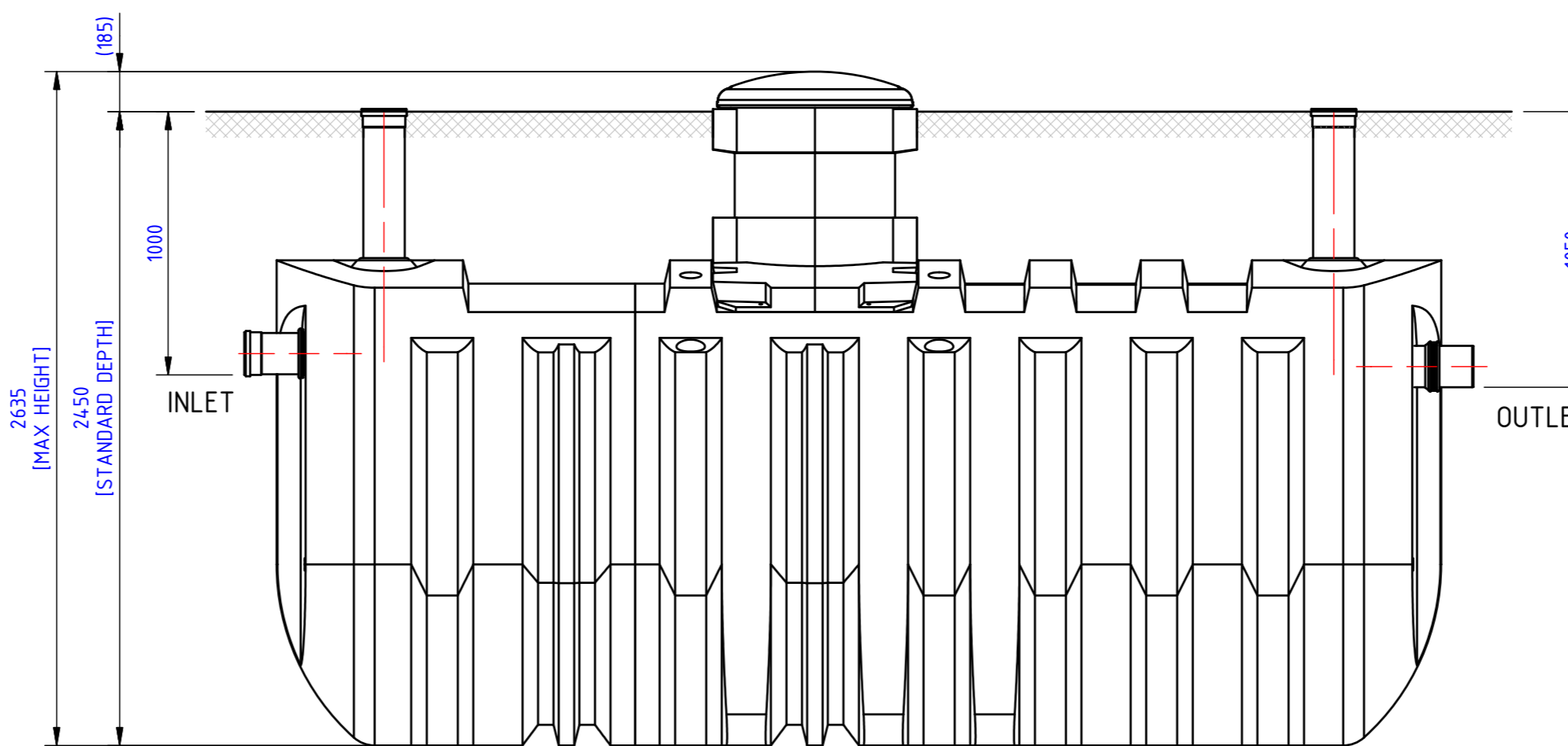
PLAN



END ELEVATION [INLET]



ANNOTATED PERSPECTIVE CUT-AWAY VIEW [FOR ILLUSTRATION ONLY]



SIDE ELEVATION

THIS DRAWING IS COPYRIGHT AND IS ISSUED ON CONDITION THAT IT IS NOT COPIED, REPRODUCED OR DISCLOSED TO A THIRD PARTY WITHOUT CONSENT IN WRITING OF HARLEQUIN MANUFACTURING LTD.

FIRST ANGLE PROJECTION

THIRD ANGLE PROJECTION

ALL DIMENSIONS IN MILLIMETRES UNLESS STATED OTHERWISE - DO NOT SCALE IF IN DOUBT - ASK

### HYDROCLEAR 40 POP

PRIMARY CHAMBER

NOTES:

- 1.0 REFER TO COMPANY WEBSITE FOR:
- 1.1 TECHNICAL INFORMATION
- 1.2 LATEST ISSUE OF INSTALLATION GUIDES AND DRAWINGS

ALL MEASUREMENTS ARE FOR REFERENCE ONLY  
HARLEQUIN MANUFACTURING RESERVE THE RIGHT TO REVISE THEIR PRODUCT DESIGNS AND SUPPORTING INFORMATION AT ANY TIME

HARLEQUIN MANUFACTURING LTD  
21 Clarehill Road, Moira, BT67 0PB  
Email: info@harlequin-mfg.com  
Web: www.harlequin-mfg.com



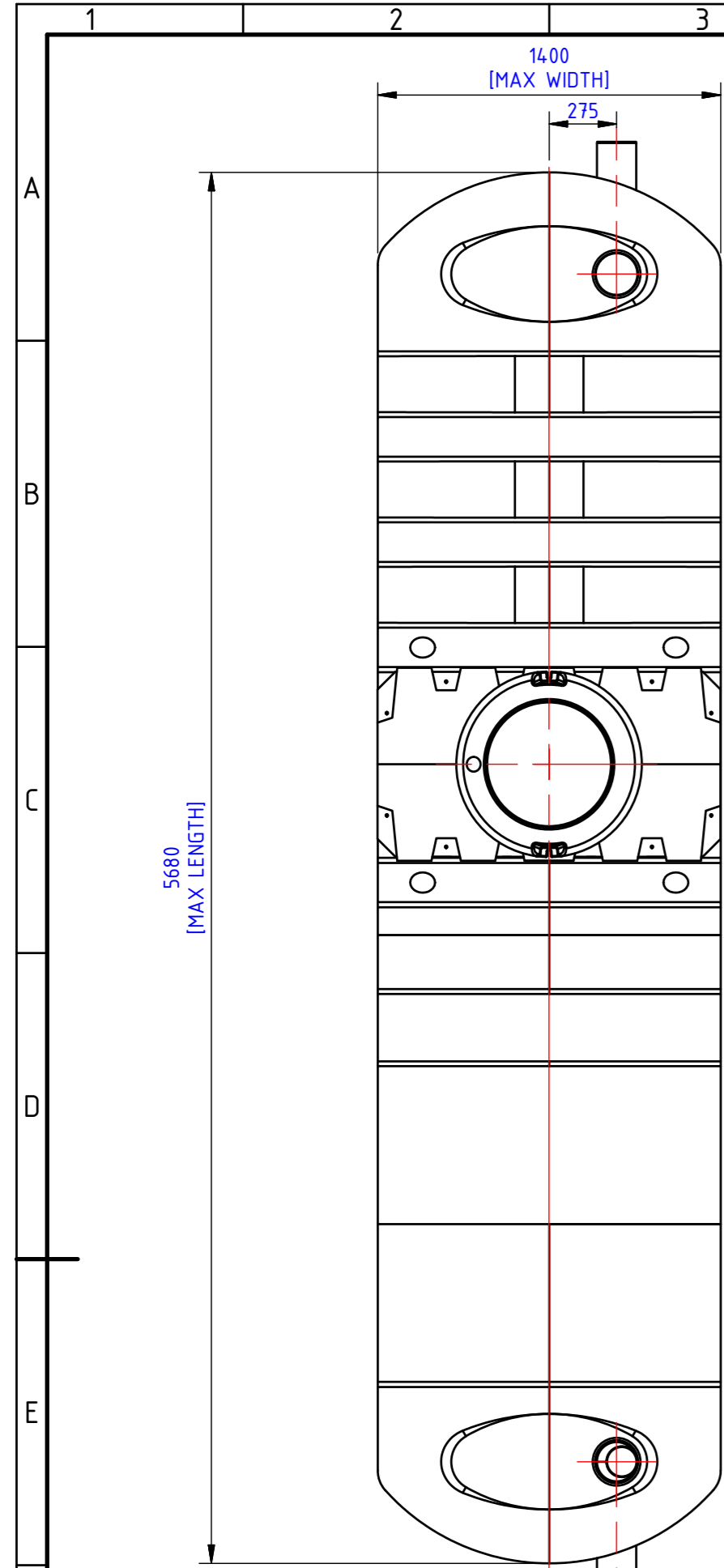
CLIENT: HARLEQUIN MANUFACTURING PROJECT No.

DRAWING TITLE: HYDROCLEAR POP 40: 40 POPULATION SYSTEM PRIMARY TANK (TANK 1 of 2)

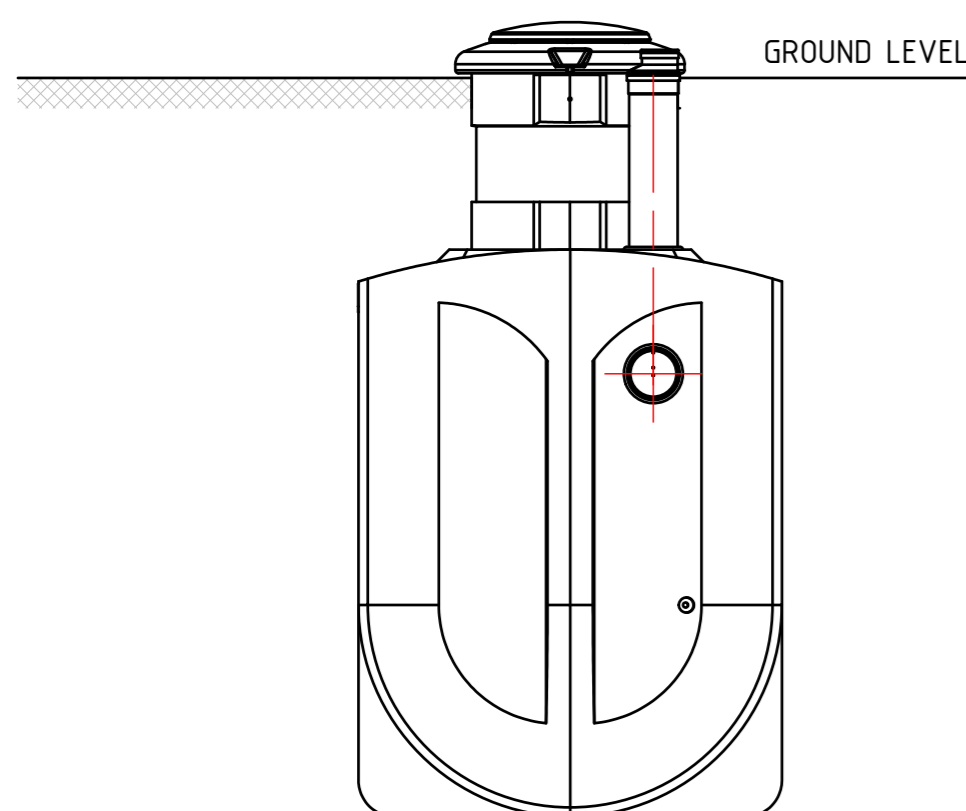
DRAWN BY F. GRIBBEN	CHECKED BY JC	APPROVED BY LC	DRAWING No.
------------------------	------------------	-------------------	-------------

SCALE 1:25	DATE DEC 2016	SHEET SIZE A2	JOB No.
---------------	------------------	------------------	---------

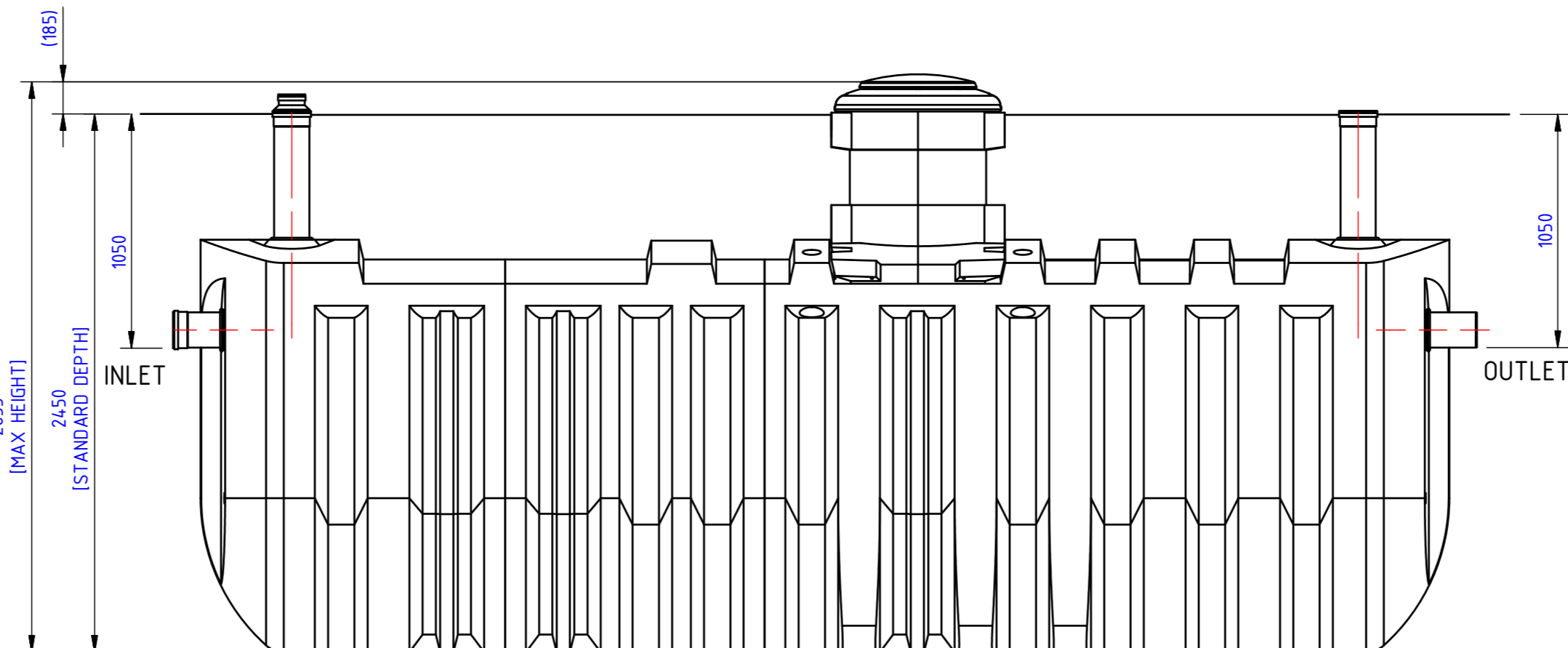




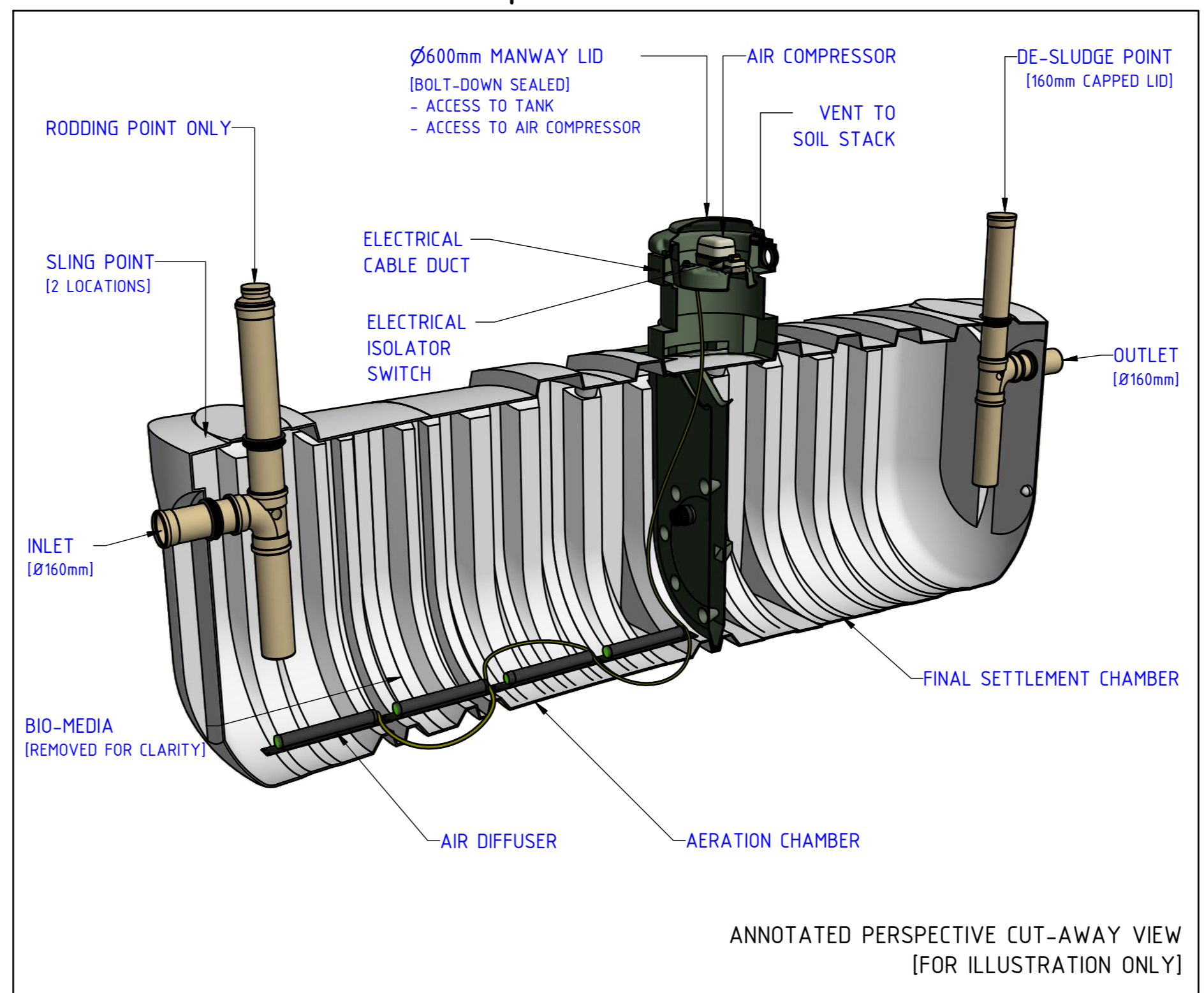
PLAN



END ELEVATION [INLET]



SIDE ELEVATION



ANNOTATED PERSPECTIVE CUT-AWAY VIEW [FOR ILLUSTRATION ONLY]

THIS DRAWING IS COPYRIGHT AND IS ISSUED ON CONDITION THAT IT IS NOT COPIED, REPRODUCED OR DISCLOSED TO A THIRD PARTY WITHOUT CONSENT IN WRITING OF HARLEQUIN MANUFACTURING LTD.



ALL DIMENSIONS IN MILLIMETRES UNLESS STATED OTHERWISE - DO NOT SCALE IF IN DOUBT - ASK

### HYDROCLEAR 40 POP

AERATION/FINAL SETTLEMENT CHAMBER

NOTES:  
 1.0 REFER TO COMPANY WEBSITE FOR:  
 1.1 TECHNICAL INFORMATION  
 1.2 LATEST ISSUE OF INSTALLATION GUIDES AND DRAWINGS

ALL MEASUREMENTS ARE FOR REFERENCE ONLY  
 HARLEQUIN MANUFACTURING RESERVE THE RIGHT TO REVISE THEIR PRODUCT DESIGNS AND SUPPORTING INFORMATION AT ANY TIME

HARLEQUIN MANUFACTURING LTD  
 21 Clarehill Road, Moira, BT67 0PB  
 Email: info@harlequin-mfg.com  
 Web: www.harlequin-mfg.com



CLIENT: HARLEQUIN MANUFACTURING  
 PROJECT No.:

DRAWING TITLE:  
 HYDROCLEAR POP 40: 40 POPULATION SYSTEM  
 AERATION/FINAL SETTLEMENT TANK(TANK 2of2)

DRAWN BY: F. GRIBBEN  
 CHECKED BY: JC  
 APPROVED BY: LC  
 DRAWING No.:

SCALE: 1:25  
 DATE: DEC 2016  
 SHEET SIZE: A2  
 JOB No.: