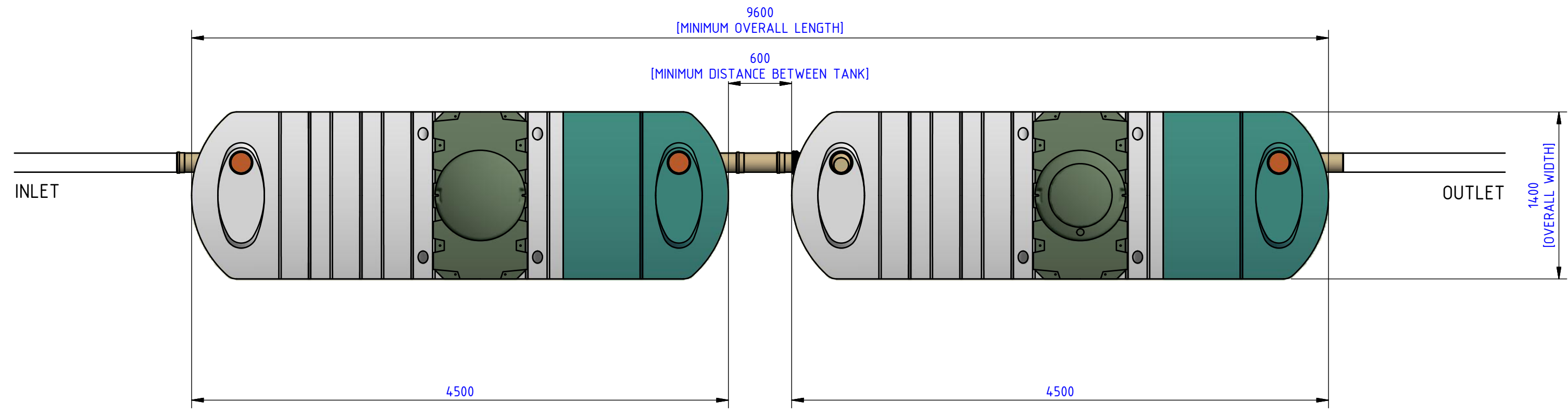


SIDE ELEVATION

PRIMARY TANK [TANK 1]
INDIVIDUAL DRAWING PAGE 2

AERATION / FINAL SETTLEMENT TANK [TANK 2]
INDIVIDUAL DRAWING PAGE 3



PLAN

INSTALLATION:

- REFER TO INSTALLATION INSTRUCTIONS FOR SPECIFIC INSTALLATION REQUIREMENTS
- TANKS ORDER MUST BE MAINTAINED. ALTERNATIVE TANK ALIGNMENTS TO THAT SHOWN ARE POSSIBLE TO SUIT SPECIFIC SITE REQUIREMENTS
- ENSURE INTERCONNECTING PIPEWORK HAS RODDING ACCESS AT ALL PIPE BENDS

THIS DRAWING IS COPYRIGHT AND IS ISSUED ON CONDITION THAT IT IS NOT COPIED, REPRODUCED OR DISCLOSED TO A THIRD PARTY WITHOUT CONSENT IN WRITING OF HARLEQUIN MANUFACTURING LTD.



ALL DIMENSIONS IN MILLIMETRES UNLESS STATED OTHERWISE - DO NOT SCALE IF IN DOUBT - ASK

HYDROCLEAR 30 POP

SYSTEM GENERAL ASSEMBLY

PRODUCT FEATURES:

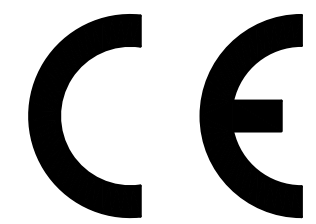
- Ø160mm STANDARD PVC INLET AND OUTLET PIPES
- AIR COMPRESSOR
- AIR DIFFUSER
- ELECTRICAL ISOLATOR SWITCH
- BIO-MEDIA
- SLING POINTS

MATERIALS CONTAINMENT:

- WASTE WATER [NON-INDUSTRIAL]

TECHNICAL INFORMATION:

• TANKS -	VOLUMES	WEIGHTS
- PRIMARY SETTLEMENT -	5050litres	400kg
- AERATION CHAMBER -	3600litres	
- FINAL SETTLEMENT CHAMBER -	2760litres	630kg
• POWER REQUIREMENTS -		
- 230V		
- 149W		
- 1.5A [START-UP CURRENT]		



GENERAL NOTES:

- ACCREDITED TO BS EN 12566-3
- CE TREATMENT EFFICIENCY

	EFFICIENCY	FINAL EFFLUENT
COD	91.2%	59mg/l
BOD5	96.6%	11mg/l
NH4-N	85.8%	4.5mg/l
SS	94.7%	19mg/l

- INVERT DEPTHS ARE REDUCIBLE TO A MINIMUM OF 750mm CONTACT HARLEQUIN FOR DETAILS
- 525mm DEEP TURRET EXTENSION PIECES AVAILABLE ON REQUEST
- FOR INSTALLATION AND OPERATION GUIDELINES FOLLOW INSTRUCTIONS SUPPLIED IN TANK

ALL MEASUREMENTS ARE FOR REFERENCE ONLY
HARLEQUIN MANUFACTURING RESERVE THE RIGHT TO REVISE THEIR PRODUCT DESIGNS AND SUPPORTING INFORMATION AT ANY TIME

02	REISSUE, HARLEQUIN MFG UPDATE	FG	JC	LC	01/12/16
01	FIRST ISSUE	SI	BB	BB	27/10/08
ISSUE	MODIFICATION	BY	CHK	APV	DATE

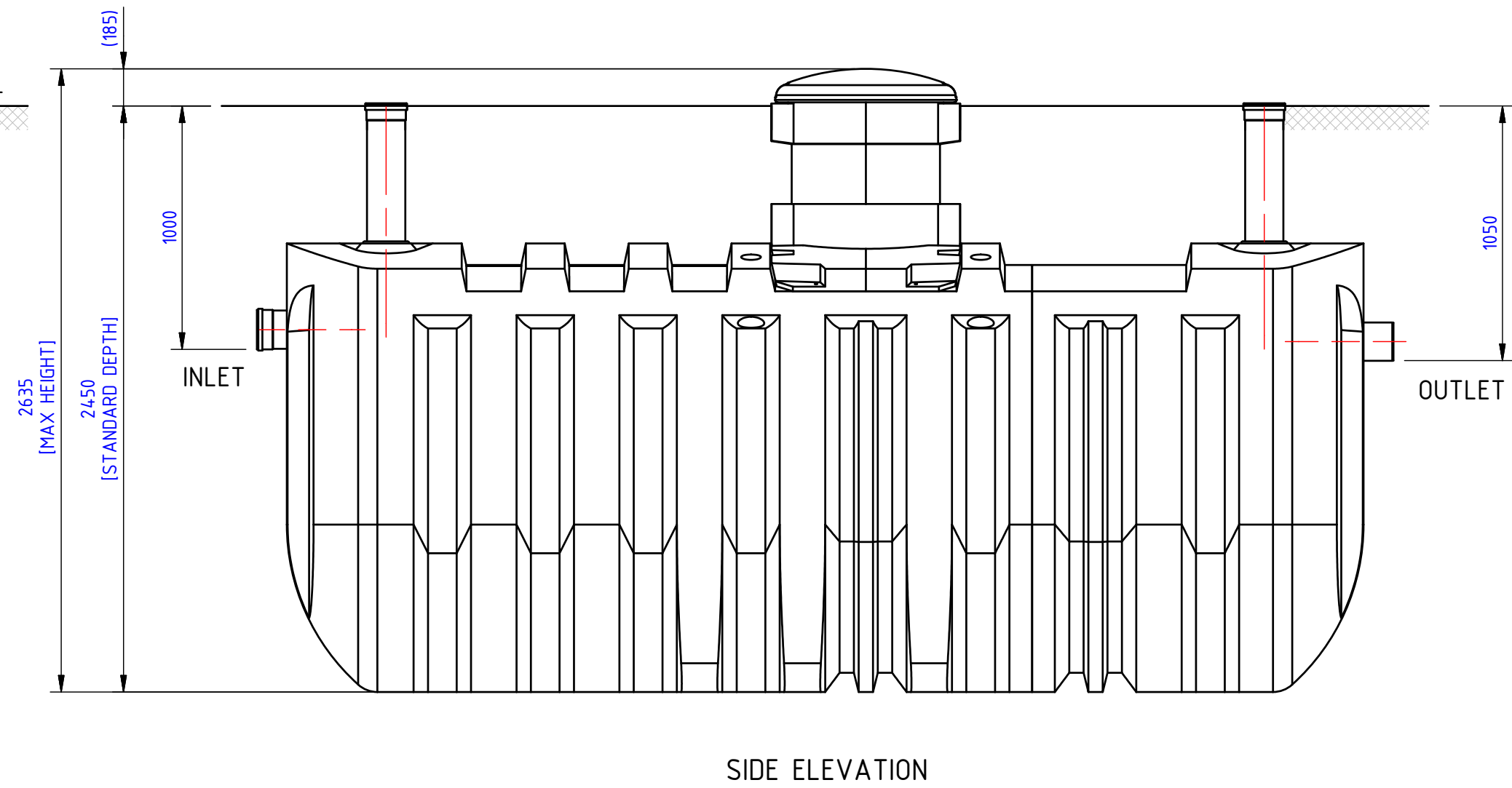
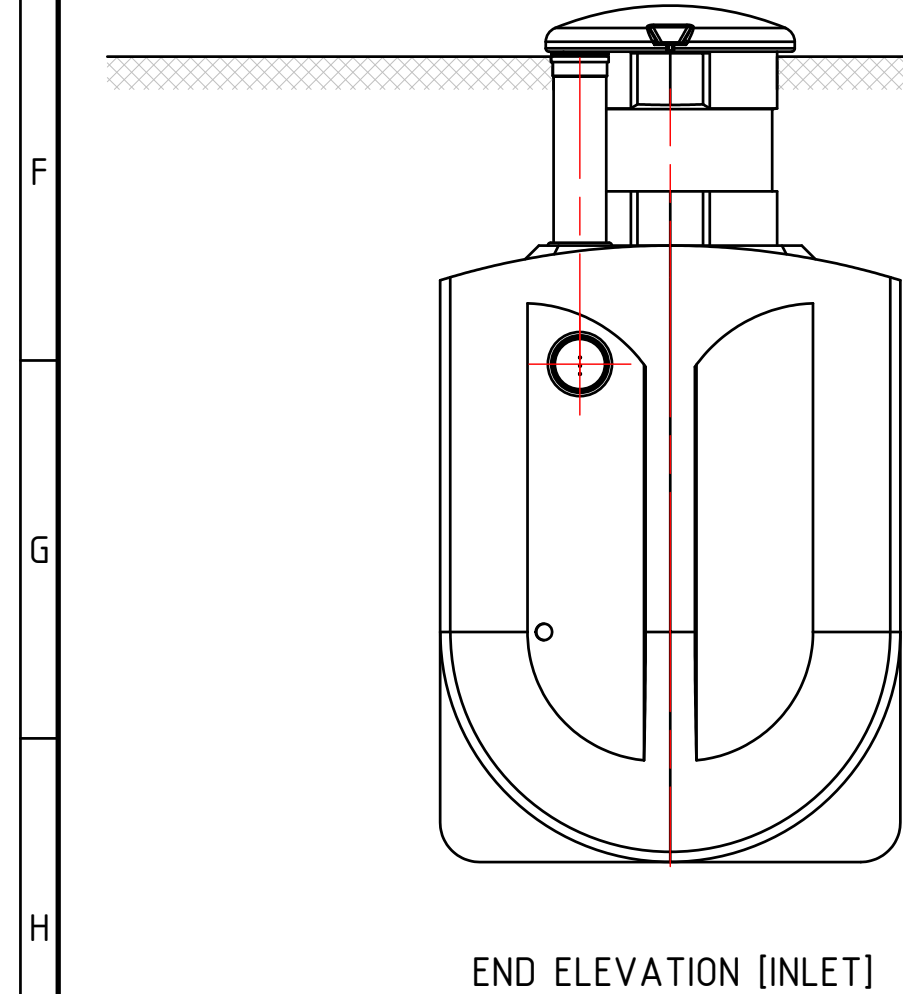
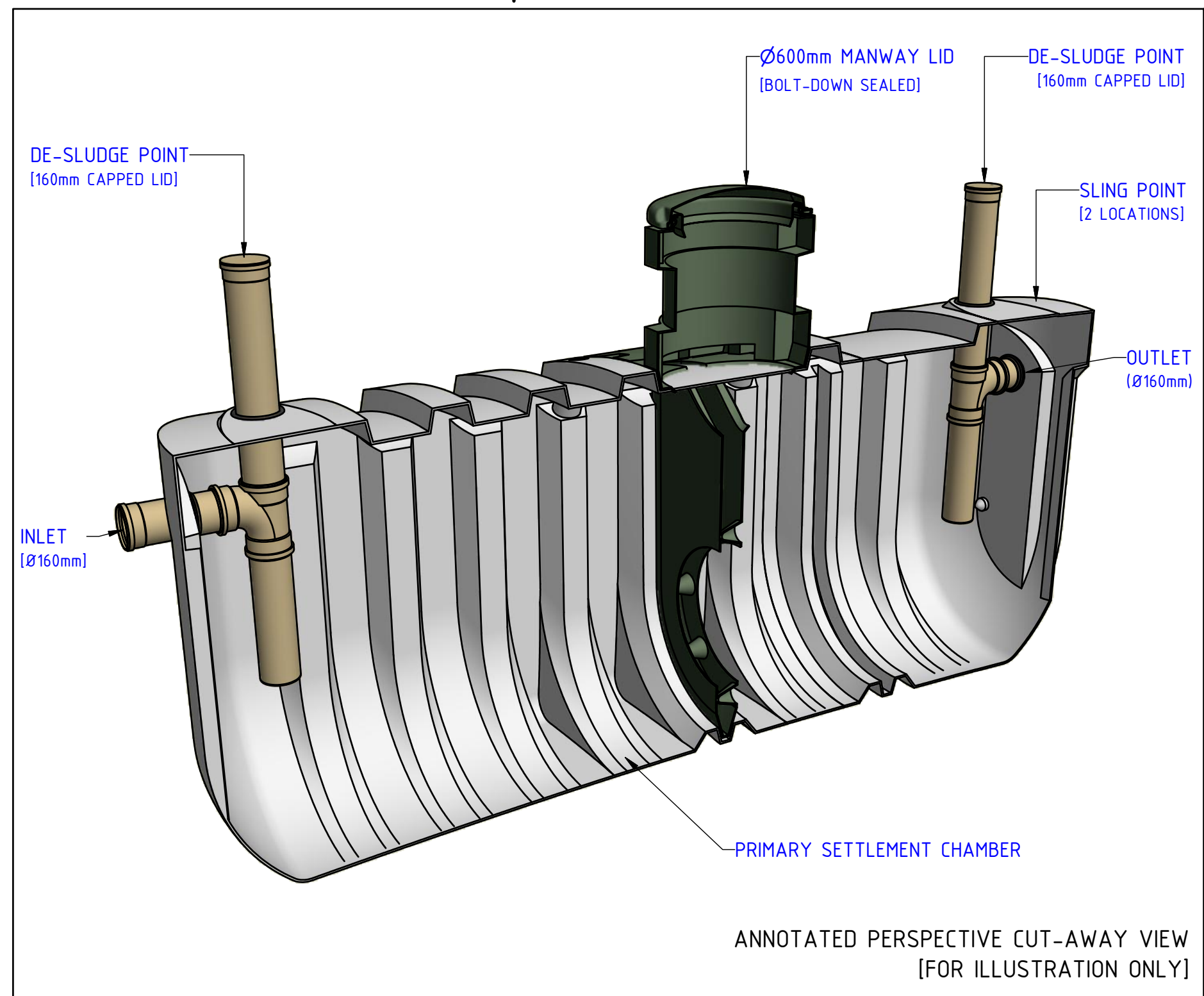
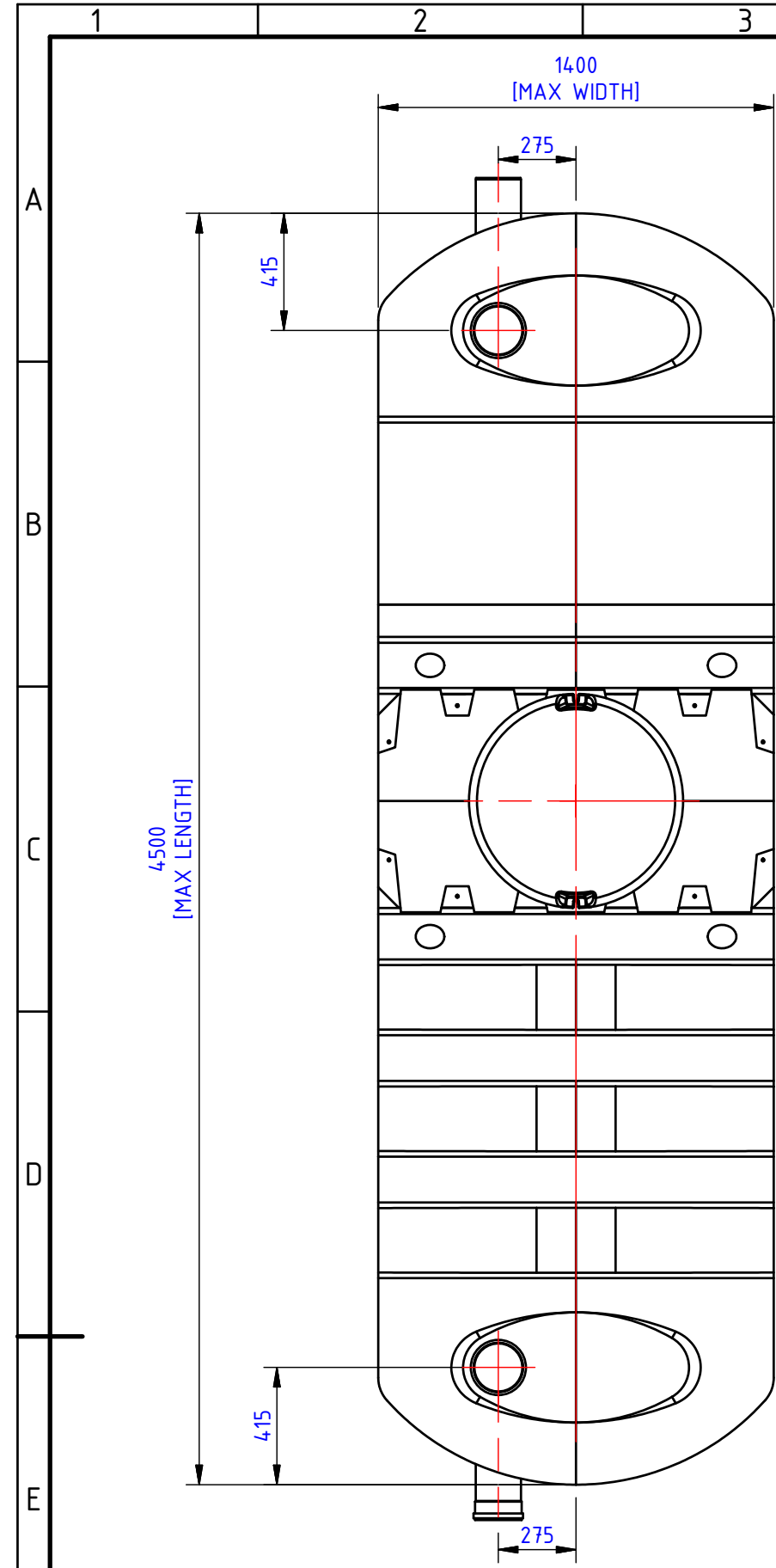
HARLEQUIN MANUFACTURING LTD
21 Clarehill Road, Moira, BT67 0PB
Email: info@harlequin-mfg.com
Web: www.harlequin-mfg.com



CLIENT	HARLEQUIN MANUFACTURING	PROJECT No.	
--------	-------------------------	-------------	--

DRAWING TITLE
HYDROCLEAR POP 30: 30 POPULATION SYSTEM
GENERAL ASSEMBLY

DRAWN BY	CHECKED BY	APPROVED BY	DRAWING No.
F. GRIBBEN	JC	LC	
SCALE	DATE	SHEET SIZE	JOB No.
1:25	DEC 2016	A2	



THIS DRAWING IS COPYRIGHT AND IS ISSUED ON CONDITION THAT IT IS NOT COPIED, REPRODUCED OR DISCLOSED TO A THIRD PARTY WITHOUT CONSENT IN WRITING OF HARLEQUIN MANUFACTURING LTD.



ALL DIMENSIONS IN MILLIMETRES UNLESS STATED OTHERWISE - DO NOT SCALE IF IN DOUBT - ASK

HYDROCLEAR 30 POP

PRIMARY CHAMBER

NOTES:

- 1.0 REFER TO COMPANY WEBSITE FOR:
- 1.1 TECHNICAL INFORMATION
- 1.2 LATEST ISSUE OF INSTALLATION GUIDES AND DRAWINGS

ALL MEASUREMENTS ARE FOR REFERENCE ONLY
HARLEQUIN MANUFACTURING RESERVE THE RIGHT TO REVISE THEIR PRODUCT DESIGNS AND SUPPORTING INFORMATION AT ANY TIME

HARLEQUIN MANUFACTURING LTD
21 Clarehill Road, Moira, BT67 0PB
Email: info@harlequin-mfg.com
Web: www.harlequin-mfg.com

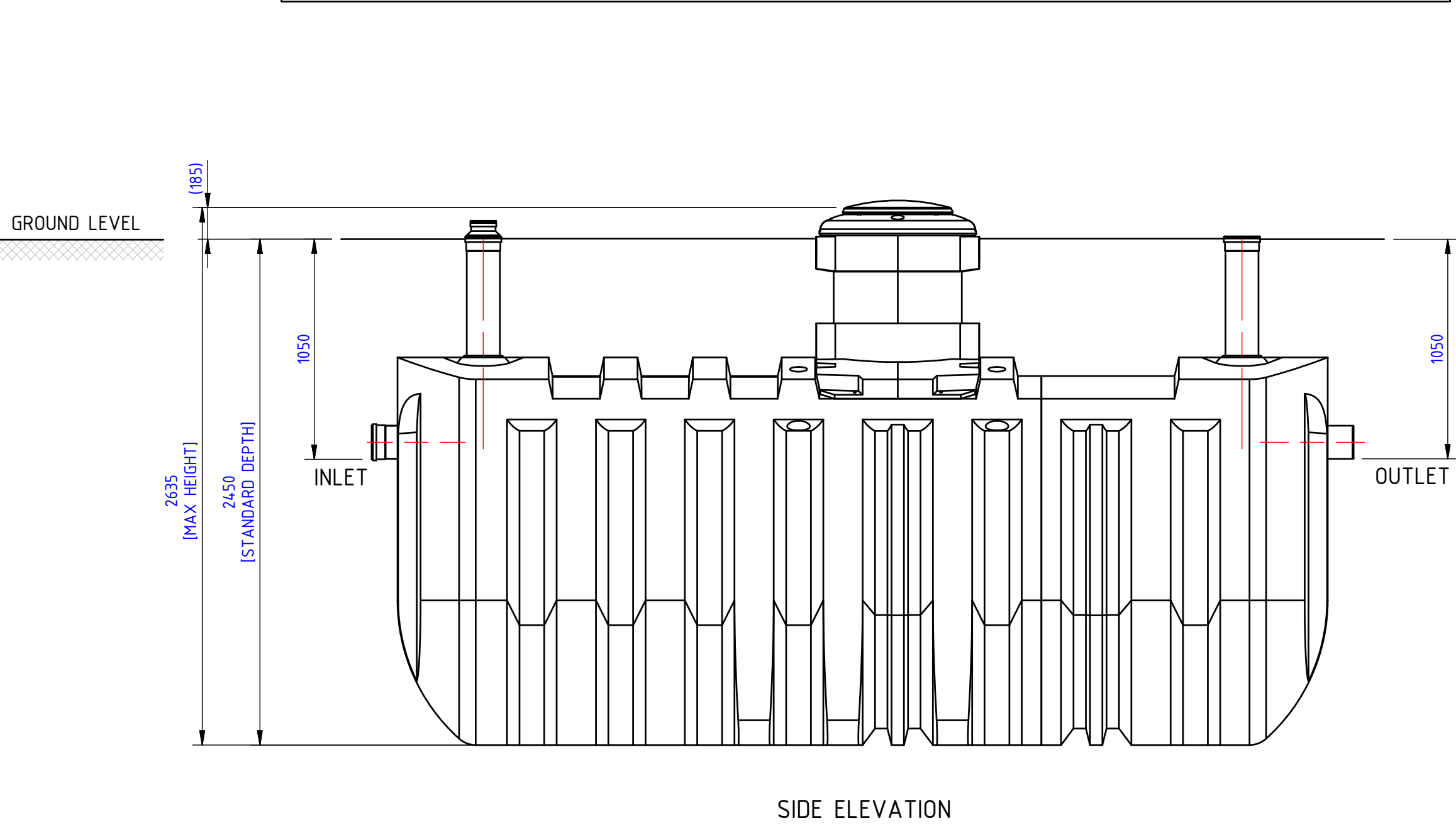
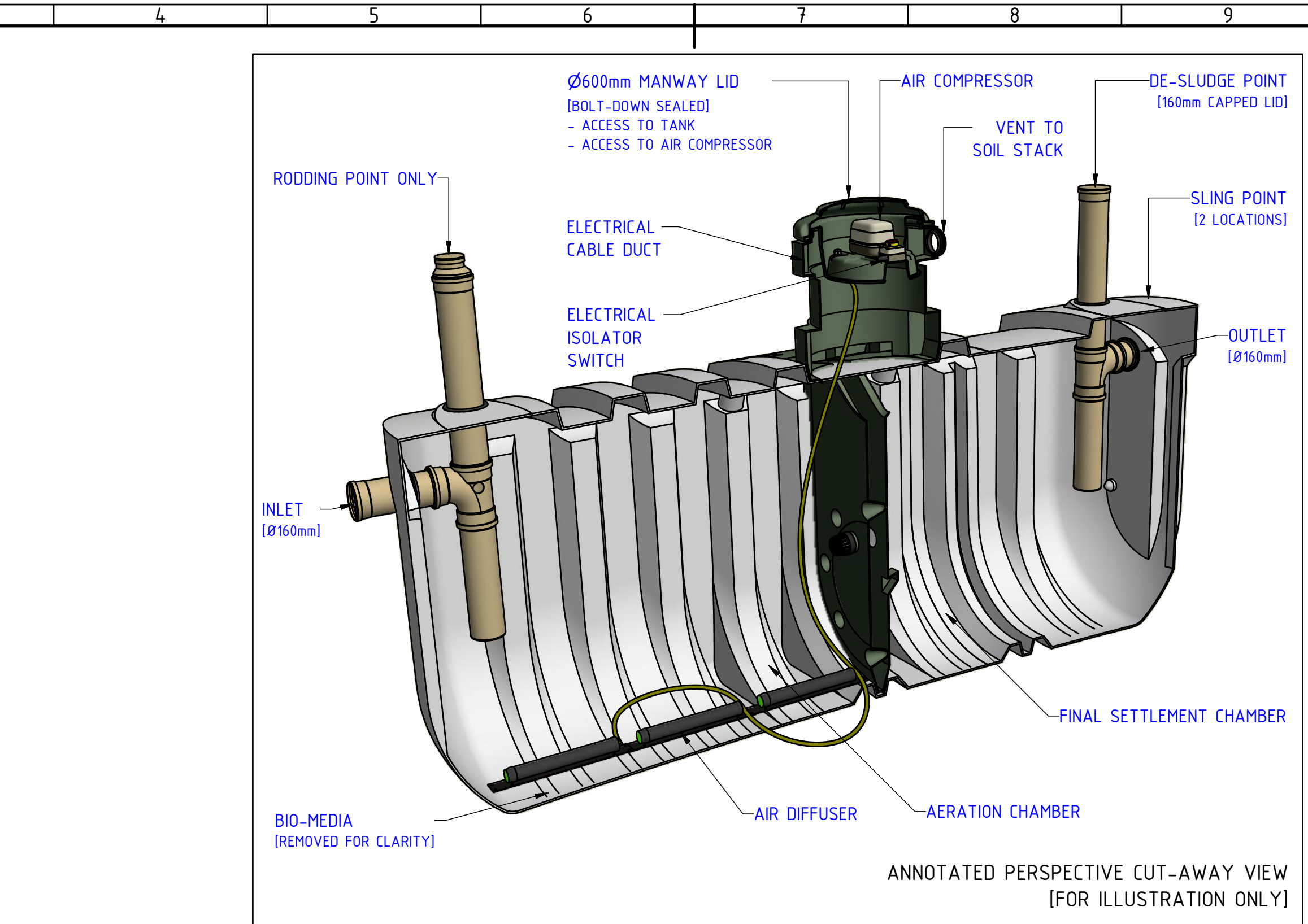
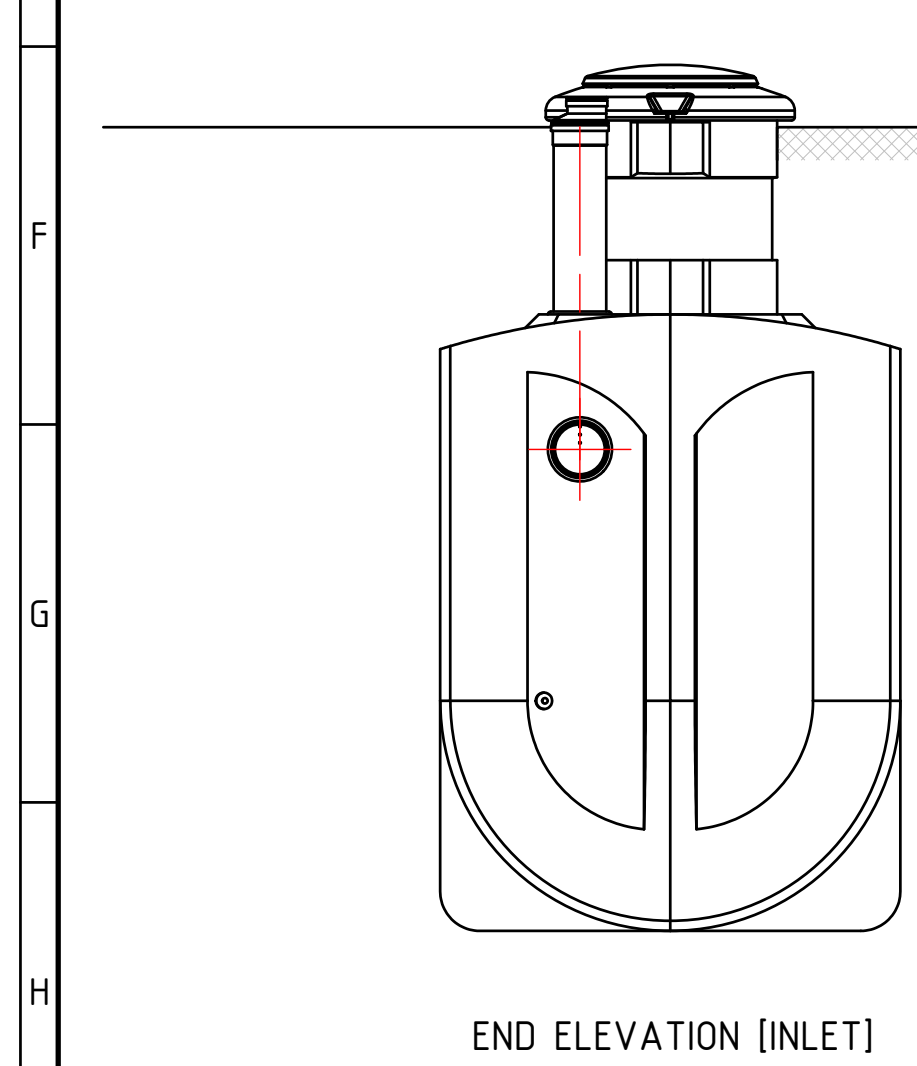
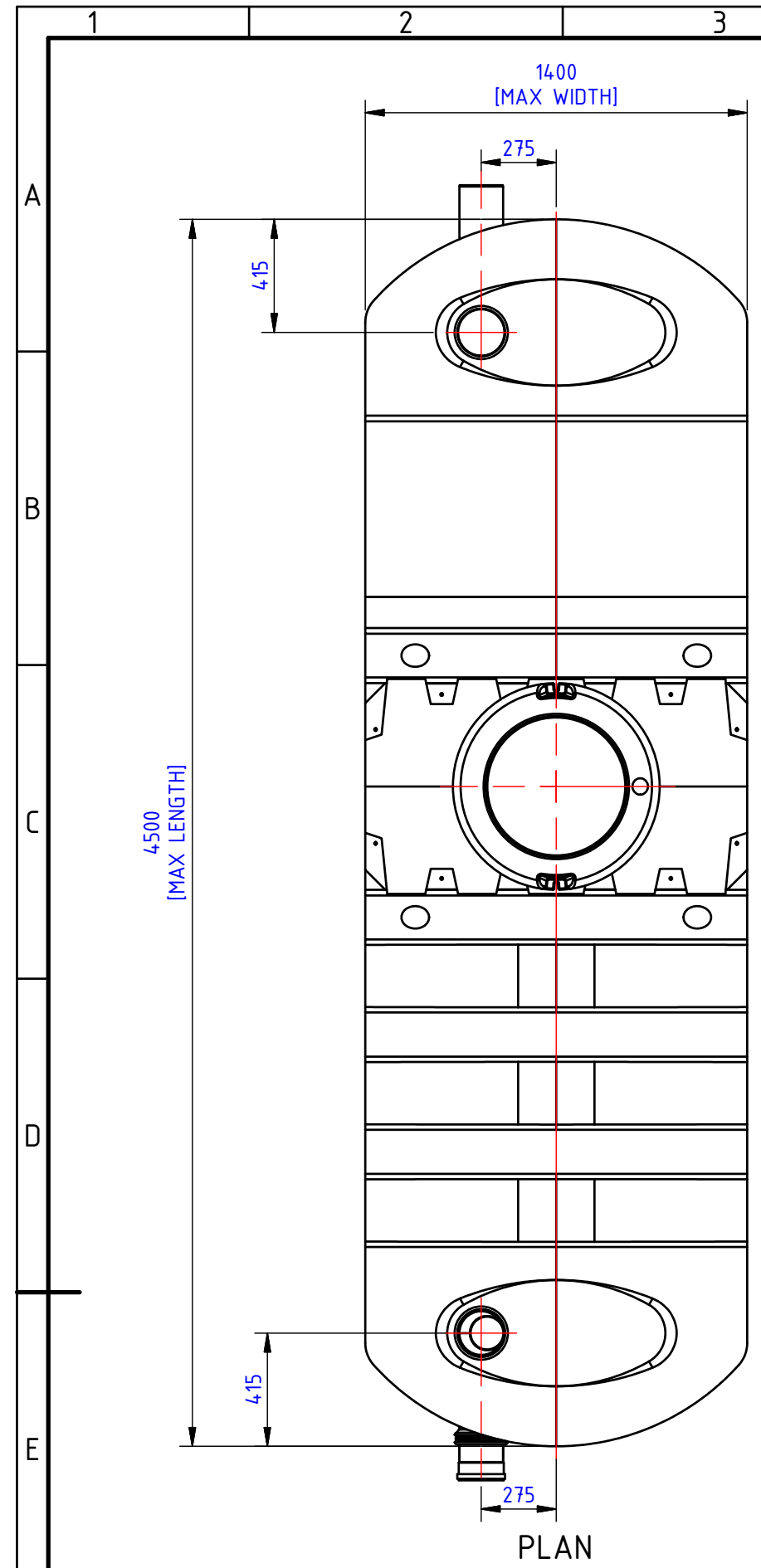


CLIENT: HARLEQUIN MANUFACTURING
PROJECT No.

DRAWING TITLE: HYDROCLEAR POP 30: 30 POPULATION SYSTEM
PRIMARY TANK (TANK 1 of 2)

DRAWN BY: F. GRIBBEN
CHECKED BY: JC
APPROVED BY: LC
DRAWING No.

SCALE: 1:25
DATE: DEC 2016
SHEET SIZE: A2
JOB No.



THIS DRAWING IS COPYRIGHT AND IS ISSUED ON CONDITION THAT IT IS NOT COPIED, REPRODUCED OR DISCLOSED TO A THIRD PARTY WITHOUT CONSENT IN WRITING OF HARLEQUIN MANUFACTURING LTD.

FIRST ANGLE PROJECTION
THIRD ANGLE PROJECTION

ALL DIMENSIONS IN MILLIMETRES UNLESS STATED OTHERWISE - DO NOT SCALE IF IN DOUBT - ASK

HYDROCLEAR 30 POP
AERATION/FINAL SETTLEMENT CHAMBER

NOTES:
1.0 REFER TO COMPANY WEBSITE FOR:
1.1 TECHNICAL INFORMATION
1.2 LATEST ISSUE OF INSTALLATION GUIDES AND DRAWINGS

ALL MEASUREMENTS ARE FOR REFERENCE ONLY
HARLEQUIN MANUFACTURING RESERVE THE RIGHT TO REVISE THEIR PRODUCT DESIGNS AND SUPPORTING INFORMATION AT ANY TIME

HARLEQUIN MANUFACTURING LTD 21 Clarehill Road, Moira, BT67 0PB Email: info@harlequin-mfg.com Web: www.harlequin-mfg.com		Harlequin HydroClear SEWAGE TREATMENT PLANT	
CLIENT HARLEQUIN MANUFACTURING		PROJECT No.	
DRAWING TITLE HYDROCLEAR POP 30: 30 POPULATION SYSTEM AERATION/FINAL SETTLEMENT TANK(TANK 2of2)			
DRAWN BY F. GRIBBEN	CHECKED BY JC	APPROVED BY LC	DRAWING No.
SCALE 1:25	DATE DEC 2016	SHEET SIZE A2	JOB No.