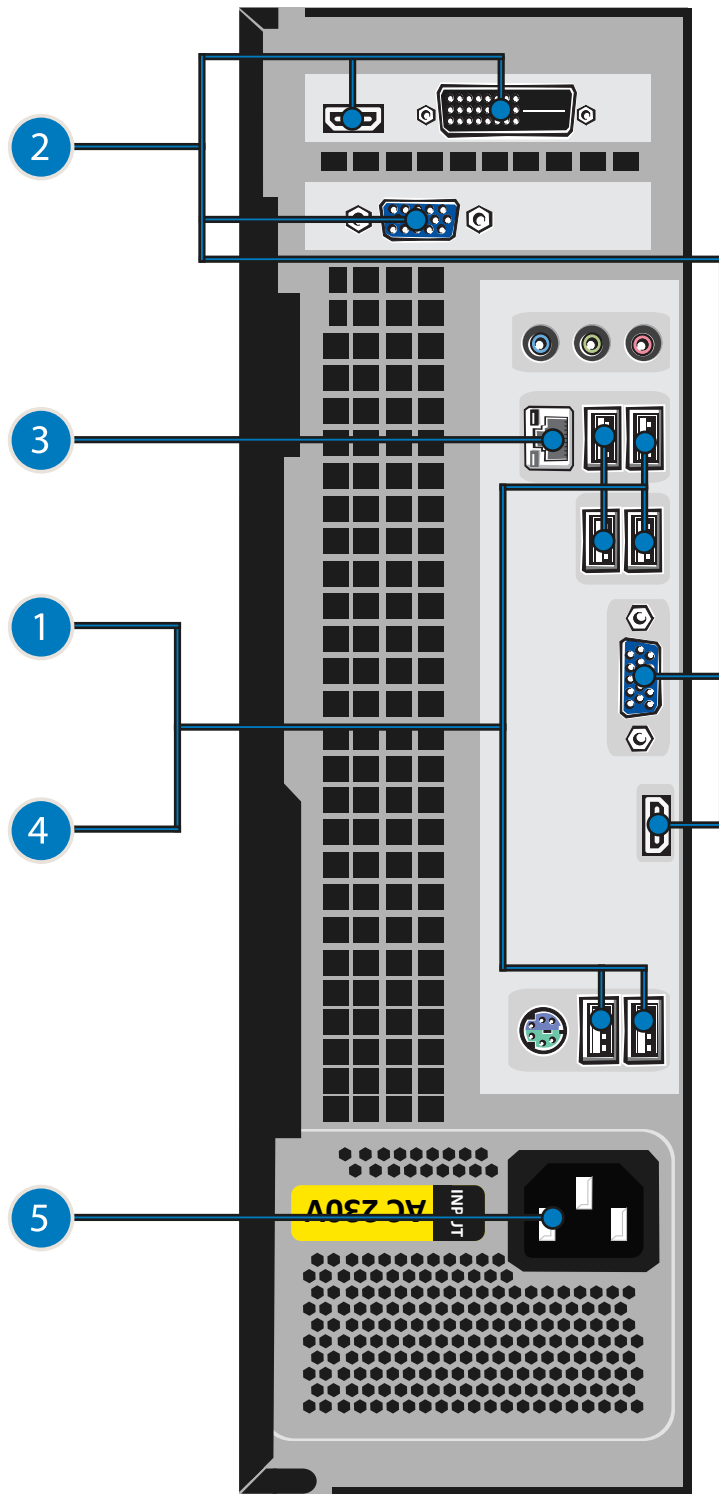
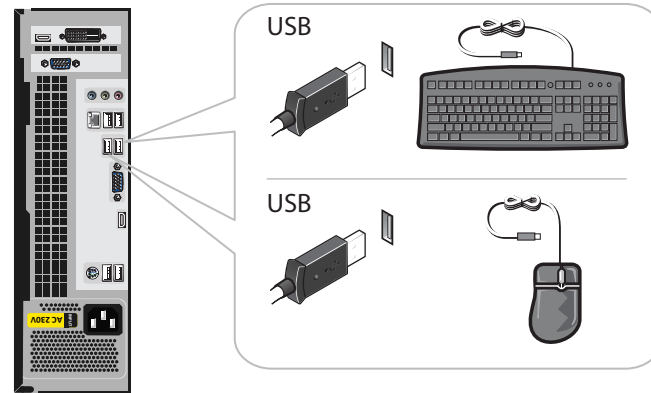


CAUTION:

Before you set up and operate your Xitrix™ computer, read and follow the safety instructions in your Owner's Manual.



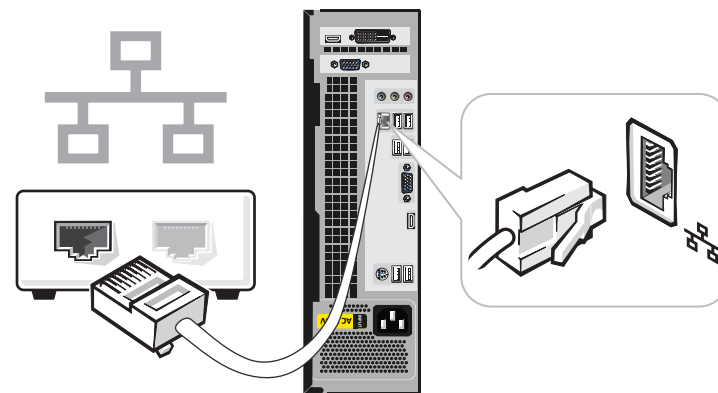
1 Connect a keyboard and a mouse



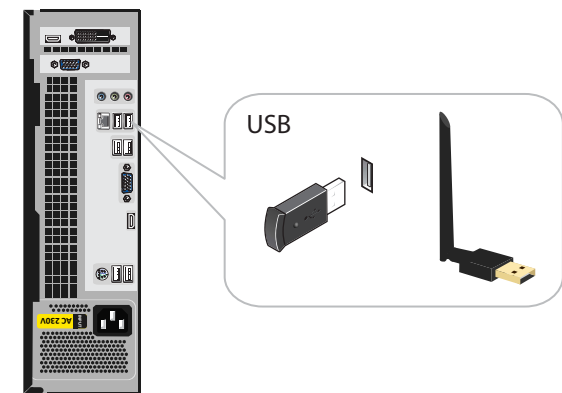
2 Connect the monitor to the computer



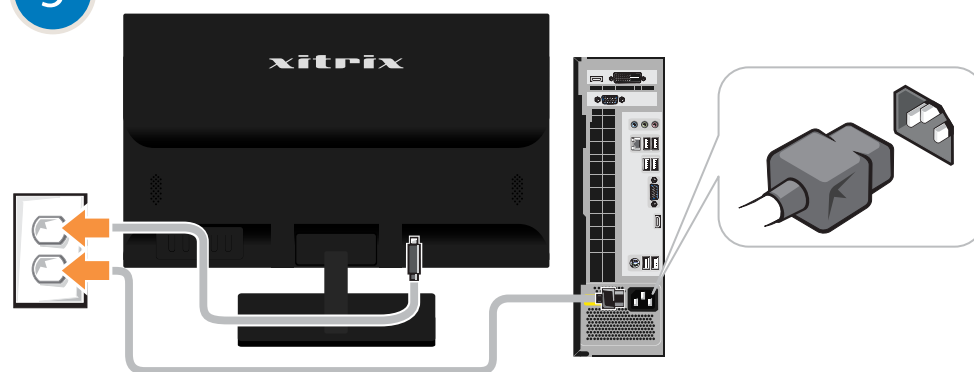
3 If you have a network device, connect a network cable (not included) to the network connector



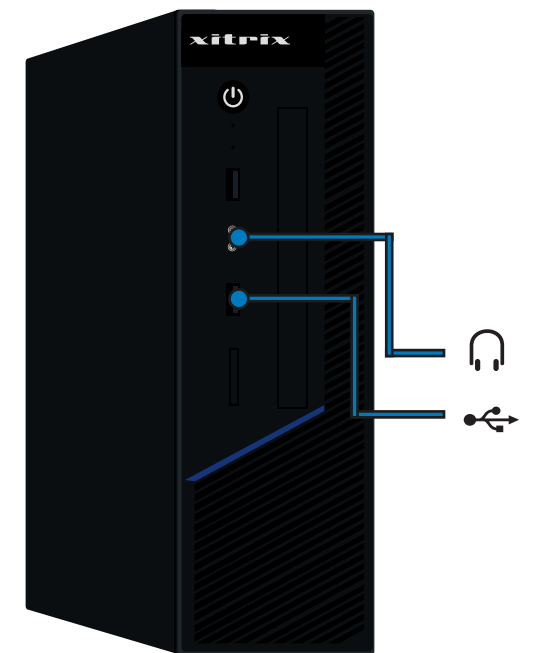
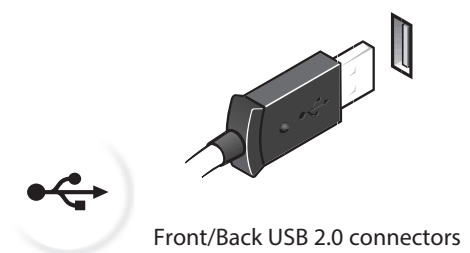
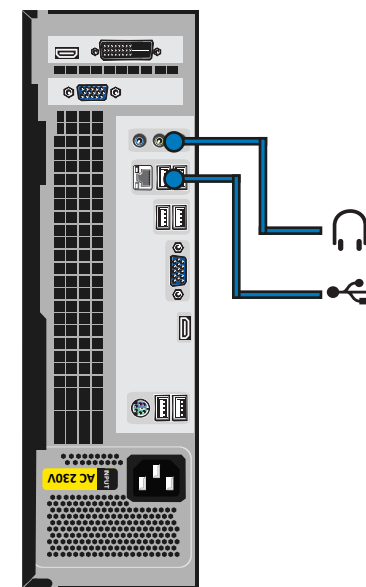
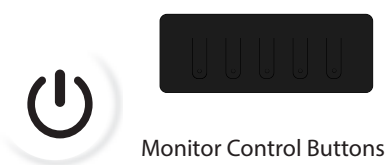
4 If you have a wireless network device, connect a USB Wifi connector (Optional) to the USB Port.



5 Connect the computer and monitor to electrical outlets

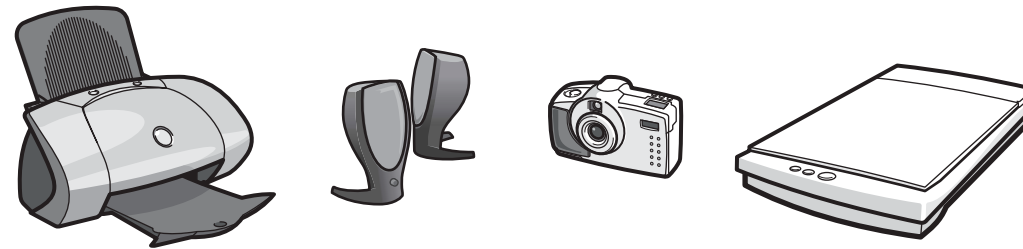


6 Turn on the computer and monitor

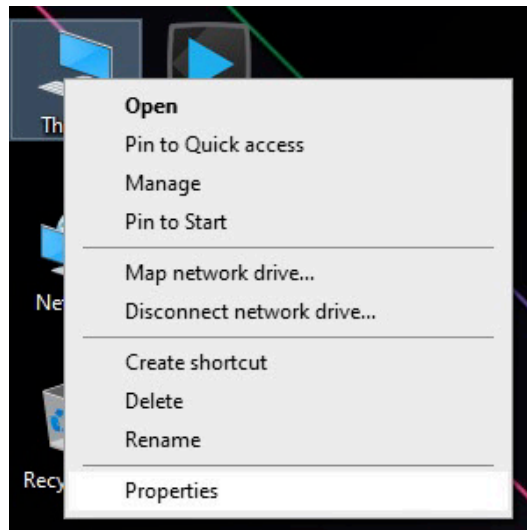


Connect other devices according to their documentation

Raccordez les autres périphériques en suivant les instructions de la documentation
 Schließen Sie andere Geräte gemäß ihren Benutzeranleitungen an
 Collegare altre periferiche secondo la loro documentazione
 Conecte los demás dispositivos según las instrucciones que aparecen en la documentación
 Verbind de andere apparaten volgens de documentatie

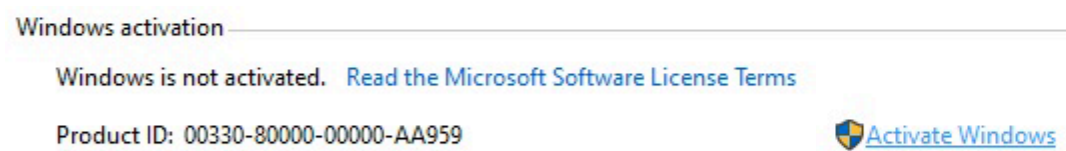


Windows Activation



1 Right Click (This PC)

2 Select (Properties)



3 Click the (Activation Windows)

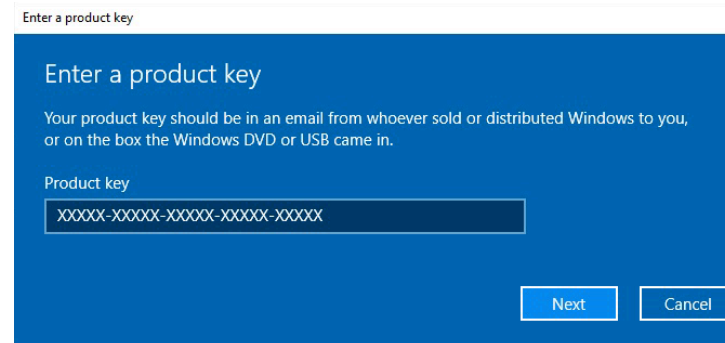
Activate Windows now

Running a non-genuine copy of Windows can put you at greater risk for viruses and other security threats.

Go to the Store to buy genuine Windows or enter a product key.

Change product key

4 Click the (Change Product Key)

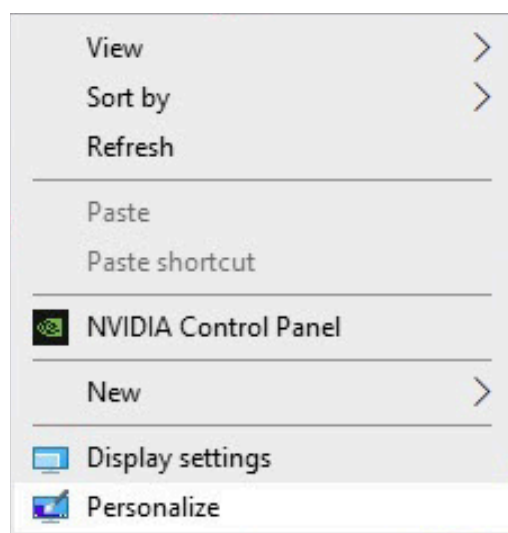


5 Input the (Product Key) and click (Next)



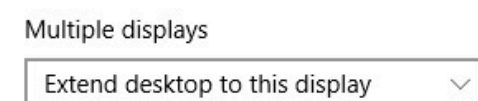
6 The Product Key is located at the top of the PC

Setup Monitor Hertz



1 On Desktop, Right Click Mouse Button and Select (Personalize)

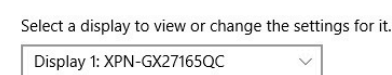
Multiple displays



2 On Multiple Display, Select (Advance Display Settings)

Advanced display settings

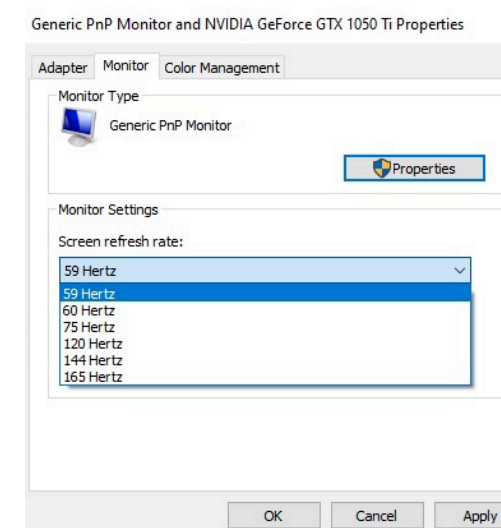
Choose display



Display information

XPN-GX27165QC	
Display 1: Connected to NVIDIA GeForce GTX 1050 Ti	
Desktop resolution	2560 x 1440
Active signal resolution	2560 x 1440
Refresh rate (Hz)	164 Hz
Bit depth	8-bit
Color format	RGB
Color space	Standard dynamic range (SDR)
Display adapter properties for Display 1	

3 Select (Display Adapter Properties For Display)



4 Select (Monitor)

5 In (Screen Refresh Rate) Select (Monitor Hertz)

Help and Support

See your for additional setup instructions, including how to connect a printer.

To access support and educational tools, double-click the Xitrix Solution Center icon on the Microsoft Windows desktop. You can also access Xitrix through support@xitrix.net

For additional information about your computer, click the Start button and click Help and Support:

- To access the Tell Me How help file, click User and system guides, click User's guides, and then click Tell Me How.

- For help with the Windows 10 operating system, click Microsoft Windows 10 Tips.