



QUIN
MANUAL

IMPORTANT INSTRUCTIONS

READ CAREFULLY - It is extremely important to read and familiarize yourself with the proper fit, use and care of your new helmet.

Read these instructions very carefully before wearing your Quin Design™ Helmet and keep in a safe place for future reference. These instructions are very important for your safety. Failure to follow these instructions may increase your risk of serious injury or death in an accident.

Although your Quin Design™ Helmet is designed to reduce or prevent some injuries when worn, no helmet can protect you from all possible or foreseeable impacts. For example, your helmet cannot protect you from spinal or neck injuries. In addition, there is no guarantee that your helmet will prevent injuries to the area of your head that is covered.

In order to get the most protection possible from your helmet, you should always do the following:

- >> While wearing, your helmet must fit securely and should provide adequate peripheral vision for maximum protection;
- >> The chin strap must be securely fastened, providing a secure and snug fit;
- >> Handle your helmet carefully to avoid accidental damage.

WARNING

Do not immerse in water to avoid damaging the electronic components as well as shortening its lifetime.

Do not use or handle your mobile phone for any reason while driving. Use of your phone while driving significantly increases your risk of serious injury and fatality.

Please note: in no event our product shall be liable for any special, indirect, punitive, incidental, exemplary or consequential damages, or any damages whatsoever resulting from the usage of this product.

Phone conversations are extremely dangerous while driving, even when in hands-free mode. Please pull over to take all/any calls.

If you notice anything unusual such as smoke, heat or bad smell, please remove the helmet and power it off immediately. Continuing the use may cause electric shock or fire.

Use of helmet outside the temperature range of 0°C-50°C, may result in abnormal functions, including deactivating of safety protocols.

CONTENTS OF THIS MANUAL

03Introduction
05Specifications
12Getting Started
19Maintaining your helmet
21Safety Information
24Caution, Disclaimer and Warranty

01

INTRODUCTION

MEET YOUR QUIN DESIGN™ HELMET

Congratulations and thank you for joining the Quintemen - riders who have chosen Quin Design Helmets to look after their essential safety needs!

The Quin Design™ helmet uses technology to deliver essential safety solutions, focussing on three main areas. These are:

- >> **BLUETOOTH® INVISIBLE INTEGRATION:** Connect your Quin Design™ helmet to your mobile phone using Bluetooth®, for taking handsfree calls, getting directional instructions on the move, listening to seamless music and using intelligent voice assistant.
- >> **INTELLIQUIN CRASH DETECTION SYSTEM:** Intelliquin™ technology accurately detects dangerous levels of crash force experienced by the rider and informs emergency contacts of the crash location.
- >> **INTELLIQUIN SOS:** When help is needed on-the-move, Intelliquin™ also lets riders reach out for help through a manually triggered emergency message to emergency contacts or nearest responders.

CONTENTS OF THE BOX

- >> Quin Design™ (McQ/Ghost/Spitfire) helmet, packaged in a microfiber cloth bag.



QUIN McQ



QUIN GHOST



QUIN SPITFIRE

SPECIFICATIONS

02

MORE ABOUT QUIN DESIGN™ HELMET

COMPONENTS OF THE HELMET

QUIN McQ

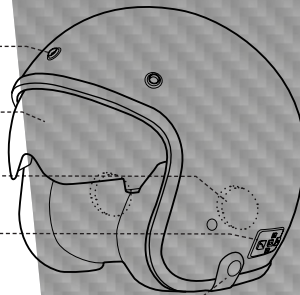
3-BUTTON SHIELD SNAP

DROP DOWN SUN VISOR

INTEGRATED BLUETOOTH
COMMUNICATION SYSTEM

CONTROL BUTTONS

ACCESS SNAP FOR DFU AND
CHARGING PORT



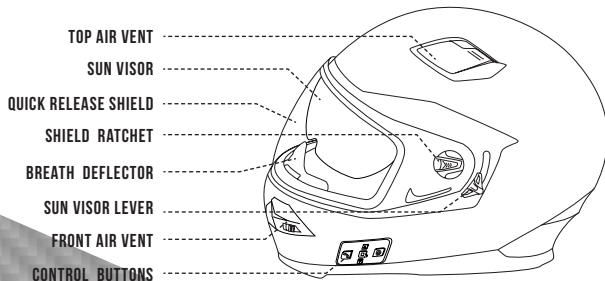
FEATURES

- >> 3-button snap system
- >> D-Ring chin strap
- >> In-built sun visor
- >> Quick release and washable cheek padding and comfort liner
- >> Conehead™ Shock Absorbtion

MATERIAL

- >> Thermoplastic shell with a polyester resin and a polystyrene lining.

QUIN SPITFIRE



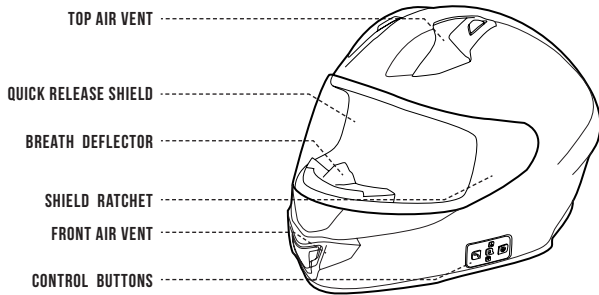
FEATURES

- >> Quick-release wind shield
- >> Quick-release chin strap
- >> In-built sun visor
- >> Quick-release snap chin curtain
- >> Quick release and washable cheek padding and comfort liner
- >> Conehead™ Shock Absorbtion

MATERIAL

- >> Thermoplastic shell with a polyester resin and a polystyrene lining

QUIN GHOST



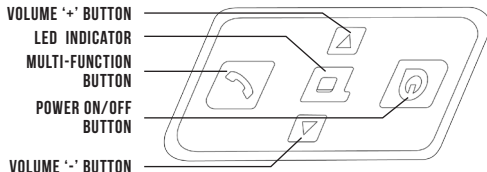
FEATURES

- >> Quick-release wind shield
- >> Quick-release chin strap
- >> Quick-release snap chin curtain
- >> Quick release and washable cheek padding and comfort liner
- >> Conehead™ Shock Absorbtion

MATERIAL

- >> Shell with carbon kevlar and fiberglass resin a polystyrene lining

CONTROL PANEL



- » Power On/Off button: To turn on and off the Quin Design™ Helmet, to pair Bluetooth device.
- » Multi-function button: To pick-up/end/reject calls, play/pause music, SOS Beacon Trigger.
- » Volume Up button: To increase volume, play next track, activate voice assistant.
- » Volume Down button: To decrease volume, play previous track, redial last call.

CHEEK PADS

The removable Cheek pads are held in place using snaps (in Quin Spitfire and Quin Ghost) or velcro (in Quin McQ). To remove gently pull up on the front of the cheek pad and undo the snaps/velcro. To re-install the cheek pads, reverse the order, taking care to align and engage the snaps correctly.

COMFORT LINER

The comfort liner is connected to the helmet with snaps. To remove, gently pull on the upper left or right corner of the liner and unsnap the corners. Repeat this process on the lower rear section to completely free the comfort liner. To re-install, place the comfort liner in the helmet, aligning the front of the liner with the front of the helmet. Take care to align and engage the snaps correctly.

WARNING

If placed backwards, the comfort liner will not properly fit in the helmet, compromising its function and safety and, in the event of an impact or accident, could result in serious injury or death.

CHIN STRAP FIT

IMPORTANT: Make sure that you always fasten the chinstrap securely beneath your chin when wearing the helmet.

The Quin Design helmets comes with two types of chin straps: D-rings in Quin McQ and Quick release strap in Quin Spitfire and Quin Ghost.

D-RINGS (QUIN McQ)

Position the straps underneath your chin, towards your neck, and secure the D-rings. Tightly fasten the chin strap by passing the end of the strap through the D-rings, as shown in Figure A, then pull it comfortably tight for a secure and snug fit. The strap should be as tight as possible, but without causing pain.

To remove the helmet, pull the D-ring tab outward to release the strap tension as shown in Figure A and then unthread the chin strap. Pull the straps outward, rotate your helmet forward and lift it off.

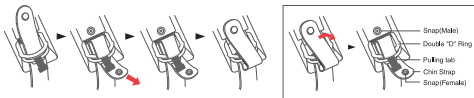


FIGURE A

QUICK RELEASE STRAP (QUIN SPITFIRE & QUIN GHOST)

Position the straps underneath your chin, towards the neck. Tighten the strap on Ratchet tab almost as close as possible, then slide the tab under the Ratchet catch and adjust as necessary for a tight, secure fit, as shown in the Figure B.

To remove Pull the red strap on the Ratchet catch for a Quick Release.

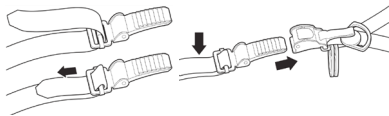


FIGURE B

FINAL FITTING

With the chin straps properly and securely fastened, check for the final fit. Grab the front of the helmet, push and rotate towards rear. Then lift the rear of the helmet, push forward and rotate the helmet off. You should not be able to remove the helmet in either of these cases. If necessary, tighten the straps again.

With the straps fastened, you should not be able to pull the helmet off your head in any direction.



FIGURE C CORRECT

FIGURE D INCORRECT

FIGURE E INCORRECT

The helmet must be worn in correct and level position (Figure C). It must not be worn tilted forward (Figure D) or worn tilted backwards (Figure E).

WARNING

If the helmet does not fit properly, do not use the helmet.

NOTE

For more detailed instructions or information, please refer the Quin App and/or visit www.quin.design

For instruction regarding the the Quin App and its features, refer to Quin App's in-built digital guide.

03

GETTING STARTED

OPERATION INSTRUCTIONS

BASIC OPERATIONS

POWERING ON THE HELMET



Press and hold the
Power button for 3
seconds

Indicator will
flash blue

VOLUME UP



Press and hold the
Volume '+' button

Release as
the volume
increases

POWERING OFF THE HELMET



Press and hold the
Power button for 8
seconds

Indicator will
briefly flash
red

VOLUME DOWN



Press and hold the
Volume '-' button

Release as
the volume
increases

PAIRING YOUR HELMET

STEP 1 ENTER PAIRING MODE



In power-off state, press and hold the Power button for 8 seconds



Indicator will flash red and blue alternatively

STEP 2 PAIR WITH THE HELMET



In your phone, from the available bluetooth devices, select 'Quin Arc'

STEP 3 POST PAIRING



After being paired, the LED flashes Blue.



All the Quin features are now active!

WARNING

If your Quin Design Helmet is not properly paired, you will not be able to access any of the helmet's smart features, including the Crash Detection System and SOS Beacon System.

MOBILE OPERATIONS

ANSWER A CALL



To pick-up the incoming call, tap Multi function button once

REJECT/END A CALL



To reject the incoming call, press and hold Multi function button for 2 seconds

REDIAL LAST CALL



In standby state, tap Volume '+' button twice

ACTIVATE VOICE ASSISTANT



In standby state, tap Volume '+' button twice

After the beep, give the command

MUSIC OPERATIONS

PLAY/ PAUSE



Tap once the Multi function button, to play / pause the music

NEXT / PREVIOUS TRACK



Tap once the Volume '+'/'-' button for next/previous track respectively

UNIQUE SAFETY OPERATIONS

SOS BEACON

ACTIVATE SOS BEACON



To activate the SOS Beacon, tap the Multi function button thrice

DE-ACTIVATE SOS BEACON



Press the cancel icon on the Quin App, within 10sec of activating SOS Beacon.

CRASH PROTOCOL

DE-ACTIVATE CRASH BEACON



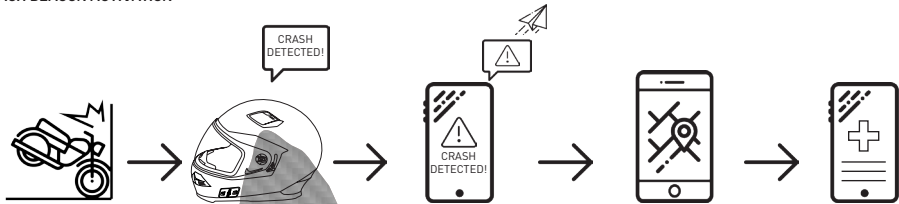
Press the cancel icon on the Quin App, within 10sec of activating SOS Beacon.

NOTE

To enter stand-by mode, please pause the music or end the call.

For more instructions related to unique safety features and operations, please refer to the Quin App guide

CRASH BEACON ACTIVATION



The driver wearing Quin Design Helmet, gets in a crash/accident with g-force exceeding the threshold.

Quin Design Helmet's IntelliQuin technology detects and authenticates the crash.

Crash message and notification are sent to the emergency contacts.

Emergency contacts receive the crash details and location of the crash

Emergency medical details are displayed on rider's phone, for first responders.

BATTERY OPERATIONS

CHARGING THE BATTERY



Micro-USB

- » If you hear a cadent tone while using the helmet, the battery might be almost drained-out and should be charged before continuing to use.
- » To charge, gently pull out the charging port using the red tab.
- » Connect a micro-USB cable to the charging port to your charging adapter or to your Desktop/Laptop.
- » If the battery is less than 2% of its limit, the Helmet and its features might behave erratically. Please charge the helmet before using again.
- » If the battery is not sufficiently charged, the Quin Design Helmet's features may not work properly and may lead to failure in helmet features case of any crash/emergency.

BATTERY CHARGING INDICATION



While charging, indicator will blink red

BATTERY FULLY CHARGED INDICATION



When charged, indicator will flash red continuously

Micro USB port



MAINTAINING YOUR HELMET 04

TAKE CARE OF YOUR HELMET

CARE AND CLEANING

CLEANING THE HELMET



Use soft cloth with warm water & mild detergent.

! WARNING

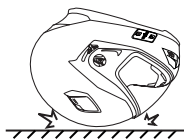


Never use hot water, gasoline or any other solvents.



DO NOT MODIFY YOUR QUIN DESIGN™ HELMET.
Modifying your helmet may increase your risk of serious injury or death in an accident.

! DANGER



Dropping your helmet onto hard surfaces and other rough handling may damage the painting surface and/or decrease its ability to protect.

IF THIS HELMET IS SUBJECTED TO AN IMPACT IT SHOULD NOT TO BE WORN.

- >> Do not wear the helmet after for any reason, even if there is no visible damage to the shell.
- >> The helmet is made for absorbing an impact through an alteration or partial destruction of some of its parts, and damage may not be visible externally. For this reason, the helmet must be replaced after an impact.
- >> Damage to the helmet after an impact is not a sign of any defect in the helmet design or construction. It is exactly what the helmet is intended to do.

**SAFETY
INFORMATION**

05

SAFETY INFORMATION

Please ensure that the product is properly used by observing the warnings and cautions below to prevent any risk and/or damage to property.

PRODUCT STORAGE AND MANAGEMENT

- » Keep the product free of dust. It may damage mechanical and electronic parts of the product.
- » Do not store the product in very high temperatures, this may reduce the life span of the device, damage the battery, and/or melt plastic parts of the product.
- » Do not store the product in cold temperatures. Abrupt changes in temperatures may cause condensation and damage electronic circuits.
- » Do not drop or otherwise shock the product. It may damage the product or its internal electronic circuits.
- » Do not disassemble, repair or modify the product as this may damage the product and invalidate the product warranty.
- » Do not store the product in humid environments, especially for long time storage.

PRODUCT USE

- » Use of the product at a high volume for a long period of time may damage your eardrums or hearing ability. Keep the volume at a modest level to prevent damage.
- » Do not cause impact to the product or touch it with sharp tools as this may damage the product.
- » Do not use the product in high-temperatures or apply heat to the product as this may cause damage, explosion, or fire.
- » Keep product away from pets or small children. They may damage the product.
- » In any place where wireless communication is prohibited, such as hospitals or airplanes, turn off the power and refrain from using the product. In a place where wireless communication is prohibited, electromagnetic waves may cause hazards or accidents.
- » Do not use the product near hazardous explosives. When it is near any explosion hazards, turn off the power and heed any regulations, instructions, and signs in the area.

- » When you use your product near the ocean or in other sandy place, do not allow sand to enter the product. Sand may cause severe damage to your product and can be difficult to repair.
- » If the product is damaged, stop using it immediately. It may cause damage, explosion, or fire.
- » While using the product, you may sometimes experience a mild sting in your ears due to static electricity accumulated in your body. This is not a malfunction of the product. You can reduce the static electricity by wearing clothes made from natural materials.
- » Be careful when using the product in wet environments. If the product gets wet, dry it thoroughly before using it any further. Do not attempt to dry the product with an external heat source, such as a hair dryer.

BATTERY

This product has an irreplaceable rechargeable battery inside. Therefore, when using the product, make sure to adhere to the following:

- » Never separate the battery from the product as this may damage the product.
 - » The battery performance may be reduced over time with usage.
 - » Make sure you turn off the product when it is not in use. The battery discharges even when your product is in standby mode.
 - » Make sure you charge the battery pack enough before using your product.
 - » Any 3rd party USB charger can be used with Quin products if the charger is approved by either the FCC, CE, IC or other locally approved agencies that Quin accepts.
- » Store the battery at temperatures of 15°C~25°C (59°F~77°F). Higher or lower temperatures may reduce the capacity and life of the battery, or may cause temporary non-operation. Do not use the product in sub-zero temperature, because it may cause serious reduction of the battery's performance.
 - » If you apply heat to the battery or throw it into fire, it may explode.
 - » Do not use the product with a damaged battery. It may explode and/or cause accidents.
 - » Never use a damaged charger. It may explode and/or cause accidents.
- » Battery life may vary depending on conditions, environmental factors, functions of the product in use, and devices used with it.

CAUTIONS, DISCLAIMER & WARRANTY

06

CAUTIONS AND DISCLAIMER

THIS HELMET IS DESIGNED TO BE A SAFETY ACCESSORY ONLY. NO HELMET SYSTEM CAN PROTECT YOU FROM SERIOUS BRAIN AND/OR NECK INJURIES, INCLUDING PARALYSIS OR DEATH.

Listening at full volume to music or voice through a Quin Design™ helmet may damage your hearing. Although the external areas of the helmet are waterproof, you are advised to ensure the inside elements of the Bluetooth® device are not exposed to water or any other foreign substance. Any warranty does not cover the battery and in all cases will be void should it be deemed that the user has caused a malfunction or in any way tampered with the Bluetooth® device.

MANUFACTURER IS NOT LIABLE FOR INJURIES DUE TO MISHANDLING OF THE DEVICE. ALWAYS ATTACH AND FASTEN THE HELMET PROPERLY AND RESPECT SPEED LIMITS & WEATHER WARNINGS. FOR SAFETY REASONS, IT IS ADVISED AGAINST USING AUDIO FEATURES AT SPEEDS EXCEEDING 50 MILES PER HOUR, AS IT MAY IMPAIR FOCUS AND RIDING ABILITY AS WELL AS AUDIO QUALITY.

DATA COLLECTION DISCLAIMER

Quin collects certain information that is necessary to effectively perform its functions, and we process it with your consent, or on another legal basis; and we only use it as this Privacy Statement describes. If you're from the EU, we are compliant with the

General Data Protection Regulation (GDPR). No matter where you are, where you live, or what your citizenship is, we provide the same standard of privacy protection to all our users around the world, regardless of their country of origin or location.

Please refer to our privacy policies on www.quin.design for more details.

INTELIQUIN CRASH DETECTION AND SOS FUNCTION DISCLAIMER

The Intelliquin Crash Detection and SOS functions are additional safety features that have been designed to function as a value addition to the Quin Smart Helmet. In no way, explicit or implied, does Quin represent or warrant that the Intelliquin system will accurately detect each and every crash. Although Quin is improving and updating its algorithms on a regular basis, the limitations of the internal sensors of the user's smartphone may alter the system's ability to detect certain crashes and their locations. In order to automatically detect crashes, the Quin APP MUST be active or running in the background. The continuous use of the Quin App as well as GPS working in the background of the user's smartphone may reduce the battery life of the product as well as the performance of the Quin App on the user's smartphone. The Intelliquin systems may be triggered when the Quin Arc chip detects a reading that exceeds the programmed threshold limit. However, detection may be affected due to various reasons including, but not limited to, damage of the helmet and/or the user's smartphone and the Quin App, or in previous incidents of impact, product use, management or storage.

Incidents that may lead to inefficiency/failure of the Intelliquin system may include, but are not limited to, the following:

- >> Limited or no data/cellular/network connectivity in the geographical location of the rider.
- >> Limited or low power of the Quin helmet and/or the user's smartphone.
- >> Continued use of a damaged Quin Helmet.
- >> Any damage to the sensors of the User's smartphone, irrespective of whether said damage occurred prior to the crash.
- >> Using an outdated version of the Quin App and/or firmware of the Quin Helmet.
- >> Using an outdated or incompatible version of Android or iOS operating system.
- >> Custom Android ROMs/ Android skins/ battery saving apps
- >> Failure of the user to give necessary permissions and authorizations in his/her smartphone, including but not limited to, location, cellular, background refresh, HFP etc.
- >> Continued use of the helmet and smartphone in extreme weather conditions.
- >> Any interruption or interference in the pairing of the helmet and smartphone.

THE INTELIQUIN CRASH DETECTION AND SOS FUNCTION IS PURELY DEPENDENT ON THE FUNCTIONALITY OF THE QUIN APP ON THE USER'S SMARTPHONE. ANY INCIDENT THAT AFFECTS THE PERFORMANCE OF THE USER'S PHONE MAY CAUSE A PARTIAL OR COMPLETE FAILURE IN THE INTELIQUIN SYSTEM.

For more detailed instruction or to ask a question, please visit www.quin.design

LIMITED WARRANTY

Quintessential Design LLC. ("Quin") guarantees the product quality based on the technical specification stated in the product manual, and data regarding product warranty. Here, product warranty extends to the product only. Quin will not be liable for any loss, damage of human life, or loss of property which may result from using the product beyond defective parts or flaws that occur due to problems in manufacture.

WARRANTY PERIOD

Quin guarantees free-of-charge replacements of defective parts of the product or flaws that may have occurred due to problems in manufacture for a period of 1 year from the date of initial purchase. This limited Warranty is the purchaser's exclusive remedy for any such defect(s).

To obtain repairs or replacement within the terms of this warranty, please visit www.quin.design to contact us. Proof of warranty coverage (i.e. - dated bill of sale) is required.

TERMINATION

Quality warranty of the product becomes effective on the date of initial purchase. In addition, the quality warranty of the product expires when the warranty period expires. However, in the following cases, the warranty will be terminated prematurely.

>> In the event the product has been sold or transferred to a third party.

- >> In the event the manufacturer's name, serial number, product label, or other markings have been modified or removed.
- >> In the event any unauthorized person has tried to disassemble, repair, or modify the product.

NOTICE AND WAIVER

By buying and using this product, you relinquish considerable legal rights including any claim for compensation for damages. Therefore, be certain to read and understand the following terms and conditions before using the product. Use of this product will constitute consent to this agreement, and forfeiture of rights to all claims. If you do not consent to all the terms and conditions of this agreement, return the product for a refund.

1. You agree that you, your descendants, legal proxies, successors, or transferees will not raise permanent volitional request for any suit, claim, implementation, redemption or similar action from Quin with regard to any occasion such as difficulty, pain, suffering, inconvenience, loss, injury, or death which may occur to you or a third party during the use of this product.
2. You must completely understand and accept all risks (including those occurring due to any careless behaviour of yours or others) which may occur during the use of this product.
3. You are responsible for ensuring that your medical condition permits usage of the product and that you are in sufficient physical condition for using any device which can be used with it. In addition, you must ensure that the product does not limit your abilities and that you are able to use it safely.

4. You must be an adult who can take responsibilities for using the product.
5. You must read and understand the following warnings and alerts:
 - a. Quin; together with employees, managers, partners, subsidiaries, representatives, agents, supporting firms and suppliers, sole sellers of Quin (collectively referred to as "the company") recommend that, before using the product and similar devices of any brands, you collect any relevant information in advance and be entirely prepared in terms of weather, traffic situation, and road conditions.
 - b. When you use the product while you operating any vehicle or equipment such as motorcycles, scooters, mopeds, ATVs, or quad-bikes (hereinafter called as "transportation means"), you must take complete caution regardless of the location of such operation.
 - c. Use of the product on the road may cause such risks as fracture, serious disability, or death.
 - d. Risk factors, which may occur when you use the product, may be due to errors of the manufacturer, its agents, or third parties which are involved in the manufacturing.
 - e. Risk factors, which may occur when you use the product, may be unforeseeable. Therefore, you must take full responsibility for any damage or loss caused by all risk factors which may occur when using the product.
 - f. When you use the product, use good judgment; never use it under the influence of alcohol.

6. You must read and completely understand all terms and conditions of legal rights and warnings that are involved in using the product. In addition, usage of the product constitutes acceptance of all terms and conditions regarding waiver of rights.

WARRANTY EXCLUSIONS REASONS FOR LIMITED LIABILITIES

If you do not return the product after purchasing it, you relinquish all rights to liabilities, loss, claims, and claims for reimbursement of expenses (including attorney's fees). Therefore, Quin will not be liable for physical injury, death, or any loss or damage of transportation means, possessions, or assets which belong to you or third parties that may have occurred while you use the product. Further, Quin will not be liable for any substantial damage not related to the condition, environment, or malfunction of the product. All risks related with the operation of the product depend entirely on the user regardless of its use by the initial purchaser of a third party. Use of this product may violate local or national laws. In addition, be aware once again that correct and safe use of the product is entirely your responsibility.

Quin design helmets are certified for use in most countries, but in certain cases, the use of this product may violate local or national laws.

LIMITATION OF LIABILITY

TO THE FULL EXTENT ALLOWED BY LAW, QUIN EXCLUDES FOR ITSELF AND ITS SUPPLIERS ANY LIABILITY, WHETHER BASED IN CONTRACT OR TORT (INCLUDING NEGLIGENCE),

FOR INCIDENTAL, CONSEQUENTIAL, INDIRECT, SPECIAL, OR PUNITIVE DAMAGES OF ANY KIND, OR FOR LOSS OF REVENUE OR PROFITS, LOSS OF BUSINESS, LOSS OF INFORMATION OR DATA, OR OTHER FINANCIAL LOSS ARISING OUT OF OR IN CONNECTION WITH THE SALE, INSTALLATION, MAINTENANCE, USE, PERFORMANCE, FAILURE, OR INTERRUPTION OF ITS PRODUCTS, EVEN IF QUIN OR ITS AUTHORIZED RESELLER HAS BEEN ADVISED OF THE POSSIBILITY OF SUCH DAMAGES, AND LIMITS ITS LIABILITY TO REPAIR, REPLACEMENT, OR REFUND OF THE PURCHASE PRICE PAID, AT QUIN'S OPTION. THIS DISCLAIMER OF LIABILITY FOR DAMAGES WILL NOT BE AFFECTED IF ANY REMEDY PROVIDED HEREIN SHALL FAIL OF ITS ESSENTIAL PURPOSE. IN ANY CASE, THE TOTAL COMPENSATION LIABILITIES OF QUIN OR ITS SALES AGENTS SHALL NOT EXCEED THE PRICE PAID FOR THE PRODUCT BY THE PURCHASER.

LIABILITIES DISCLAIMER

In addition to damages which may occur due to the use of the product, Quin will not be liable for damages of the product which occur due to the following events.

- >> In the event the product is misused or used for purposes other than its intended purposes.
- >> In the event the product is damaged because the user does not follow the content of the product manual.
- >> In the event the product is damaged because it has been left unattended or has undergone any other accident.

- >> In the event the product is damaged because the user has used any parts or software which are not provided by the manufacturer.
- >> In the event the product is damaged because the user has disassembled, repaired, or modified it in such way as is not explained in the product manual.
- >> In the event the product is damaged by a third party.
- >> In the event the product is damaged due to Acts of God (including fire, flood, earthquake, storm, hurricane or other natural disaster).
- >> In the event the surface of the product is damaged by use.

WARRANTY SERVICE

To obtain product warranty service, send the defective product, at your expense and being insured, to the manufacturer or the seller along with proof of purchase (a receipt that shows the purchase date, a product registration certificate of the Website, and other relevant information). Take necessary measures to protect the product. In order to get a refund or replacement, you must include the whole package as it was purchased.

FREE-OF-CHARGE SERVICE

Quin will provide free-of-charge repair or replacement service for the product when product defects occur within the scope of the product warranty during the warranty period.

RETURN FOR FULL REFUND

Should you not agree to the terms and conditions explained above, you may return the product for a full refund. To get a refund, within 14 days from the purchase date you must return the product to the seller in such a condition as it was purchased.

Unless you return the product within 14 days from the purchase date, you will have read and agreed to all the terms and conditions explained above, and Quin will not be liable for any claim for damages related with the product.

This warranty is in lieu of all other express warranties or liabilities. Any implied warranties, including any implied warranty of merchantability, shall be limited to the duration of this written warranty. Any action for breach of any warranty hereunder, including any implied warranty of merchantability, must be brought within a period of one year from the date of original purchase. In no case shall the company be liable for any consequential or incidental damages for breach of this or any other warranty express or implied whatsoever.

For more information and/or updated instructions, please visit Quin App or go to www.quin.design

FCC PART 15.19 WARNING STATEMENT

This device complies with Part 15 of the FCC rules. Operation is subjected to the following two conditions:

- >> This device may not cause harmful interference and
- >> This device must accept any interference received, including interference that may cause undesired operation.

FCC PART 15.21 WARNING STATEMENT

The Grantee is not responsible for any changes or modifications not expressly approved by the party responsible for compliance. Such modifications could void the user's authority to operate the equipment.

FCC PART 15.105 WARNING STATEMENT

This equipment has been tested and found to comply with the limits for a Class B digital device, pursuant to part 15 of the FCC Rules. These limits are designed to provide reasonable protection against harmful interference in a residential installation. This equipment generates, uses and can radiate radio frequency energy and, if not installed and used in accordance with the instructions, may cause harmful interference to radio communications. However, there is no guarantee that interference will not occur in a particular installation.

