

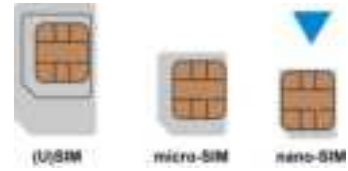
# MF289F Let's go

Getting started with your device.

1

## 1. Prepare

- A valid nano-SIM card.



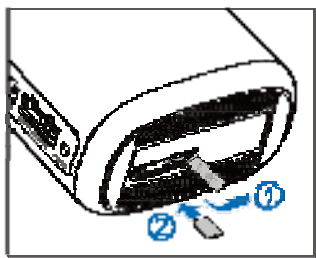
- View the label on your device to get the default information. The following figure is for your reference only.



2

## 2. Insert the nano-SIM Card

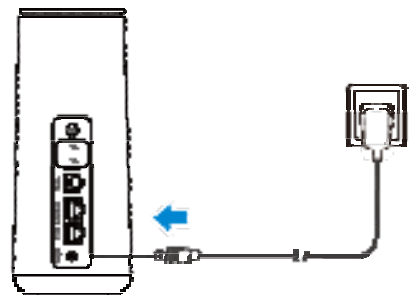
Open the slot cover at the bottom of the device and insert the nano-SIM card.



3

## 3. Power on Your Device

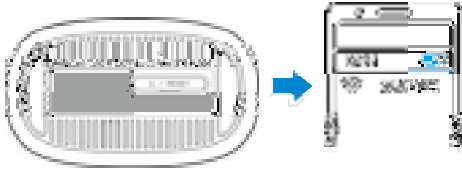
Connect the power adapter to your device and then your device will be powered on and connect to the Internet automatically



4

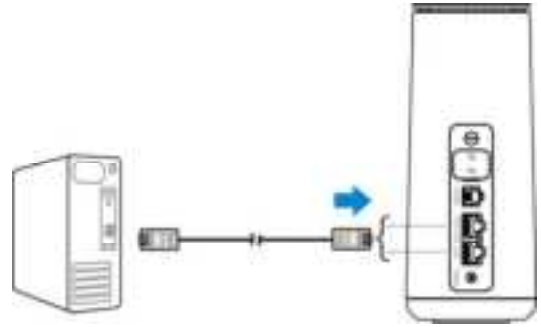
## 4. Access the Internet

- **Wi-Fi:** Get the default WLAN SSID and WLAN key (password) on the label and connect to the Wi-Fi network with your mobile device, and then access the Internet.



5

- **Network cable (RJ45):** Connect with the computer via port WAN/LAN1 or LAN2 and access the Internet.



6

## 5. Change Your Device Settings

You can change the device settings by logging in to the 4G CPE web page.

1. View the label on your device to get the default *Device Manager Website* IP address and *Website Password*.



2. Launch the Internet browser and enter the *Device Manager Website* IP address in the address bar.
3. Input the *Website Password* and then click **Login**.
4. After the 4G CPE web page is opened, you can change the Wi-Fi SSID, password or other settings.

7

## Cable Broadband Mode

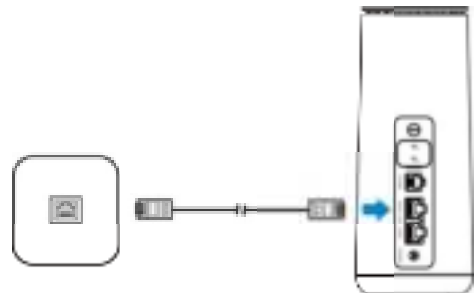
Your device supports the cable broadband mode and you can use this service from your service provider to access the Internet.

1. Connect the WAN/LAN1 port and the broadband service network port with a network cable.
2. Log in to the 4G CPE web page.
3. Change the operation mode to **Cable Broadband Mode**.

### **NOTE:**

Please disconnect from the Internet first and then you can change the mode.

4. Set the detailed parameters given by your service provider.
5. Use your clients to access the Internet.



8

## Mesh Network Function



---

Your device supports the mesh network function. You can use your device and other devices of the same model to form a larger range of Wi-Fi network in your house, and ensure seamless Wi-Fi roaming when you move.



9

### To set your mesh network:

1. Log in to the 4G CPE web page.
2. View the current mesh network status and then click .
3. Click  to switch on the mesh network and then click **Wi-Fi settings**.
4. Set the Mesh Network Wi-Fi parameters for your mesh network and then click **Apply**.
5. Add sub node device to the mesh network.
6. Enjoy your mesh network.



### NOTE:

Please remember the Wi-Fi parameters you set. Your smart phone, pad, laptop or other clients will use them to join in your mesh network.

10

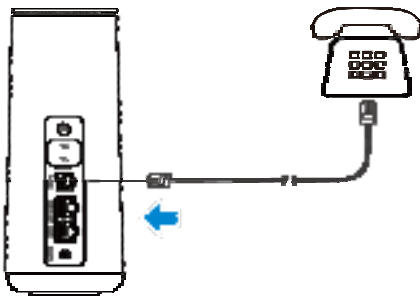
## Telephone Function

---

Your device supports the telephone function. Before using the telephone function, you need to insert the nano-SIM card and connect the telephone.

To make a call:

1. Pick up the handset.
2. Dial the telephone number.
3. Wait for the call to be connected.



11

## WPS Function

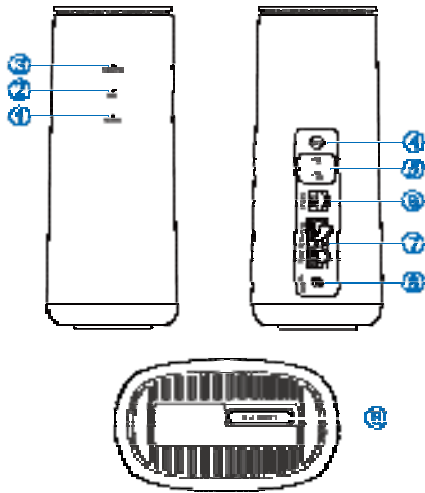
---

Your device supports the WPS function. You can use this function to connect a client to your device.

1. Press and hold the **WPS** button for about 5 seconds to activate the WPS function.
2. Enable the WPS function on your client.
3. Follow the system prompts on your client to establish the connection.

12

## Indicator Lights and Interfaces



13

1.	POWER	White on: Power is on and external power supply is working normally. Off: Power is off.
2.	WIFI	White on: <ul style="list-style-type: none"> <li>● Wi-Fi works normally without data transmission.</li> <li>● Mesh network works normally.</li> </ul> White blinking(slowly): <ul style="list-style-type: none"> <li>● Wi-Fi works normally with data transmission.</li> <li>● The mesh network function is enabled and the mesh network isn't created.</li> <li>● The mesh network is created unsuccessfully.</li> </ul> White blinking(fast): <ul style="list-style-type: none"> <li>● WPS is activating.</li> <li>● The mesh network is being created.</li> </ul> Off: Wi-Fi is off.
3.	NETWORK	Red on: The device is in error status. <ul style="list-style-type: none"> <li>● The device is not registered to the mobile network.</li> <li>● There is no nano-SIM card inserted.</li> <li>● There is no network service available.</li> </ul> Green on: The device is registered to the 2G/3G mobile network. Green blinking: The device is connected to the 2G/3G mobile network and data is being transferred. White on: The device is registered to the 4G LTE network. White blinking: The device is connected to the 4G LTE network and data is being transferred.
4.	WPS key	Press and hold for about 5 seconds to activate the WPS function.
5.	External antenna	Connect to external antennas.

14

	port	
6.	PHONE port	Connect to a telephone.
7.	LAN ports	WAN/LAN1 port: Connect to the WAN in the Cable Broadband Mode or connect to a PC. LAN2 port: Connect to a PC.
8.	Power port	Connect to the power adapter.
9.	nano-SIMcard slot and reset hole	Insert your nano-SIM card. Reset hole: Press and hold for about 3 seconds to restore your device to the factory settings.

15

## Troubleshooting

### Internet Related Problems

Symptoms	Possible Problems / Solutions
I cannot access the Internet at all.	<ul style="list-style-type: none"> <li>● Please check your configuration settings.</li> <li>● Please wait 1~2 minutes for the device to initialize.</li> <li>● Check your network indicators.</li> </ul>
The download or upload speed is very slow.	The speed is dependent on signal strength. Check your signal strength and network type.
I cannot visit the 4G CPE web page.	<ul style="list-style-type: none"> <li>● Enter the correct IP address. You can view the label on your device to get the default IP address.</li> <li>● Only use one network adapter in your PC.</li> <li>● Do not use any proxy server.</li> </ul>
I cannot establish the Wi-Fi connection between my device and the client.	<ul style="list-style-type: none"> <li>● Make sure the Wi-Fi function is active.</li> <li>● Refresh network list and select the correct SSID.</li> <li>● Check the IP address to make sure your client can obtain an IP address automatically in the Internet protocol (TCP/IP) properties.</li> <li>● Type the correct network key (Wi-Fi password) when you connect to the device.</li> </ul>

16

## Voice Related Problems

Symptoms	Possible Problems/ Solutions
There is no dial tone.	Please wait for 1~2 minutes after the device is turned on. Please check the NETWORK indicator. If you have no good RF reception, change the location of the device.
There is a prompt / phone alert / announcement as soon as I lift the phone off the hook.	Make sure your nano-SIM card is inserted correctly and the PIN number has been entered. If the PIN number has been entered incorrectly then you will need to enter the PUK code when prompted.
The line is noisy/distorted when I lift the phone off the hook.	<ul style="list-style-type: none"><li>● Remove any electrical appliance which is too close to the phone or your device.</li><li>● The cable or phone set might be faulty.</li></ul>
I hear a rapid engaged tone as soon as I lift the phone off the hook.	<ul style="list-style-type: none"><li>● Put the phone on the hook and try again.</li><li>● Please contact your service provider.</li></ul>
After dialing the last digit I hear nothing/silence.	When you have finished dialing you can press the # key or wait 4~8 seconds to connect the call.

17

## Getting More Help

You can get help by:

- Sending an email to [mobile@zte.com.cn](mailto:mobile@zte.com.cn)
- Visiting <https://www.ztedevices.com>

19

## Others

Symptoms	Possible Problems / Solutions
Problems with the passwords.	<ul style="list-style-type: none"><li>● For the default Wi-Fi connection password and the default password of the 4G CPE web page, please check the label on the device.</li><li>● If you changed the passwords and forgot them, you need to restore the device to the factory default settings.</li></ul>

18

## LEGAL INFORMATION

Copyright © 2021 ZTE CORPORATION.

All rights reserved.

No part of this publication may be quoted, reproduced, translated or used in any form or by any means, electronic or mechanical, including photocopying and microfilm, without the prior written permission of ZTE Corporation.

### Notice

ZTE Corporation reserves the right to make modifications on print errors or update specifications in this guide without prior notice.

### Disclaimer

Images and screenshots used in this guide may differ from the actual product. Content in this guide may differ from the actual product or software.

### Trademarks

ZTE and the ZTE logos are trademarks of ZTE Corporation.

Other trademarks and trade names are those of their respective owners.

Version No.: R1.0

20

### Safety Precautions

- Some electronic devices may be susceptible to electromagnetic interference. Locate the device away from TV set, radio and other electronic equipment to avoid electromagnetic interference.
- The device may interfere with medical devices like hearing aids and pacemakers. Consult a physician or the manufacturer of the medical device before using it.
- Please keep yourself at least 20 centimeters away from your device.
- Do not use your device in dangerous environments such as oil terminals or chemical factories where there are explosive gases or explosive products being processed.
- Please use original accessories or accessories that are authorized by ZTE. Unauthorized accessories may affect the device performance, damage the device or cause danger to you.
- Do not attempt to dismantle the device. There are no user-serviceable parts.
- Do not allow the device or accessories to come into contact with liquid or moisture at any time. Do not immerse the device in any liquid.
- Do not place objects on top of the device. This may lead to overheating of the device.
- The device must be placed in a well-ventilated environment for use.
- Do not expose the device to direct sunlight or store it in hot areas. High temperature can shorten the life of electronic devices.
- Do not allow children to play with the device or power adapter.
- The device is for indoor use only. Do not use the device outside.
- For pluggable equipment, the socket-outlet shall be installed near the equipment and shall be easily accessible.

### Cleaning and Maintaining

- Use an antistatic cloth to clean the device. Do not use chemical or abrasive cleanser as these could damage the plastic case. Turn off your device before you clean it.

21

- Use the device within the temperature range of -20°C~+55°C, and the storage temperature range is -40°C~+70°C. The humidity range is 5%~95%.
- Do not use your device during a thunderstorm. Remove the mains power pack from the wall socket.

### Limited Warranty

This warranty does not apply to defects or errors in the product caused by:

- i. Reasonable abrasion.
- ii. End users' failure to follow ZTE's installation, operation or maintenance instructions or procedures.
- iii. End users' mishandling, misuse, negligence, or improper installation, disassembly, storage, servicing or operation of the product.
- iv. Modifications or repairs not provided by ZTE or a ZTE-certified individual.
- v. Power failures, surges, fire, flood, accidents, and actions of third parties or other events outside ZTE's reasonable control.
- vi. Usage of third-party products or usage in conjunction with third-party products if such defects are due to the combined usage.
- vii. Any other cause beyond the range of normal usage intended for the product.

End users have no right to reject or return the product, or receive a refund for the product from ZTE under the above-mentioned situations.

This warranty is end users' sole remedy and ZTE's sole liability for defective or nonconforming items, and is in lieu of all other warranties, expressed, implied or statutory, including but not limited to the implied warranties of merchantability and fitness for a particular purpose, unless otherwise required under the mandatory provisions of the law.

### Limitation of Liability

ZTE shall not be liable for any loss of profits or indirect, special, incidental or consequential damages resulting from or arising out of or in connection with using of this product, no matter whether or not ZTE had been advised, knew or should have known of the possibility of such damages, including, but not limited to lost profits, interruption of business, cost of capital, cost of substitute facilities or product, or any downtime cost.

22

### FCC Regulations:

This device complies with part 15 of the FCC Rules. Operation is subject to the following two conditions: (1) This device may not cause harmful interference, and (2) this device must accept any interference received, including interference that may cause undesired operation.

This device has been tested and found to comply with the limits for a Class B digital device, pursuant to Part 15 of the FCC Rules. These limits are designed to provide reasonable protection against harmful interference in a residential installation. This equipment generates, uses and can radiate radio frequency energy and, if not installed and used in accordance with the instructions, may cause harmful interference to radio communications. However, there is no guarantee that interference will not occur in a particular installation. If this equipment does cause harmful interference to radio or television reception, which can be determined by turning the equipment off and on, the user is encouraged to try to correct the interference by one or more of the following measures:

- Reorient or relocate the receiving antenna.
- Increase the separation between the equipment and receiver.
- Connect the equipment into an outlet on a circuit different from that to which the receiver is connected.
- Consult the dealer or an experienced radio/TV technician for help.

Caution: Changes or modifications not expressly approved by the party responsible for compliance could void the user's authority to operate the equipment.

### Radio Frequency (RF) Exposure

Your device contains a transmitter and a receiver. When it is ON, it receives and transmits RF energy. When you communicate with your device, the system handling your connection controls the power level at which your device transmits. Important safety information regarding radiofrequency radiation (RF) exposure. To ensure compliance with RF exposure guidelines the device must be used with a separation from the body. Failure to observe these instructions could result in your RF exposure exceeding the relevant guideline limits.

23

The transmitter is using external antenna that operate at 20cm or more from nearby persons.

The FCC grant can be found under the Display Grant section of <http://www.fcc.gov/etf/fccid> after searching on **FCC ID: SRQ-MF289F**.

### IC Notice

This radio transmitter (identify the device by certification number, or model number if Category II) has been approved by Industry Canada to operate with the antenna types listed below with the maximum permissible gain and required antenna impedance for each antenna type indicated. Antenna types not included in this list, having a gain greater than the maximum gain indicated for that type, are strictly prohibited for use with this device.

Immediately following the above notice, the manufacturer shall provide a list of all antenna types approved for use with the transmitter, indicating the maximum permission antenna gain (in dBi) and required impedance for each.

This device complies with Industry Canada license-exempt RSS standard(s). Operation is subject to the following two conditions:

- (1) this device may not cause interference, and
- (2) this device must accept any interference, including interference that may cause undesired operation of the device.

This Class B digital apparatus complies with Canadian ICES-003.

IC: **5200E-MF289F**

24

## IC Radiation Exposure Statement

This device complies with IC radiation exposure limits set forth for an uncontrolled environment. In order to avoid the possibility of exceeding the IC radio frequency exposure limits, human proximity to the antenna shall not be less than 20cm (8 inches) during normal operation.

Cet appareil est conforme aux limites d'exposition aux rayonnements de la CNR-102 définies pour un environnement non contrôlé. Afin d'éviter la possibilité de dépasser les limites d'exposition aux fréquences radio de la CNR-102, la proximité humaine à l'antenne ne doit pas être inférieure à 20 cm (8 pouces) pendant le fonctionnement normal.

ZTE CORPORATION

NO. 55, Hi-tech Road South, Shenzhen, P.R.China

Postcode: 518057