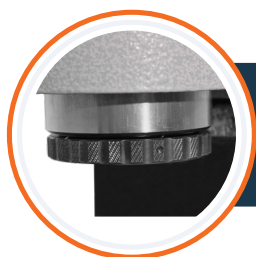


Integrated lubricant system and feed hose

Technical Specifications

CUTTER SIZE RANGE	7/16" - 1 9/16"
MAX CUTTER CAPACITY	1 9/16"
TWIST DRILL CAPACITY	1/2"
LENGTH	12"
WIDTH	5"
HEIGHT	7"
STROKE	1.57"
WEIGHT	24 lb
MAGNET (L x W x H)	6 3/8" x 3 1/4" x 1 1/2"
MAGNETIC FORCE	2650 lb
MOTOR POWER	1050W
TOTAL POWER	1100W
SPEED RPM (No Load)	700RPM
SPINDLE	3/4" Weldon
COOLANT SYSTEM	Gravity Oil Fed
WARRANTY	1 Year



The new HMT RTQ40 is a low profile Magnet drill for tight access applications, being designed to fit into any space greater than 7 1/4". Suitable for use with any standard broaching cutters while optimised to work with the high-performance CarbideMax 40 cutters.

- Ratchet drive can be mounted on either side of the machine.
- Powerful motor and magnet gives excellent stability.
- Quick-change 3/4" arbor for all standard broaching cutters

Each machine comes in a plastic case with hex keys, restraint strap, ratchet, and removable coolant system

IDEAL FOR TIGHT ACCESS APPLICATIONS

Part No	Contents
803084-110US	HMT RTQ40 Low Profile Magnetic Drill 110V