



PROSPER
K&9

YOUR DOG'S REPORT

How does our test work?

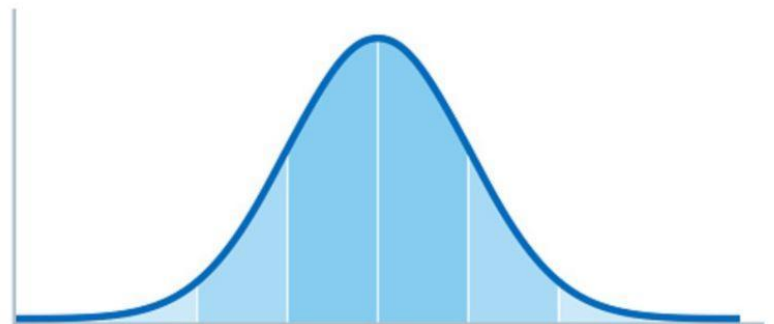
We have developed a test that measures changes to your dog's DNA that occur as they age. These changes are based on epigenetic modifications. Using a special DNA sequencing technique, we can "read" these modifications and from that infer the biological age and traits of your dog.



How old is your dog biologically?

Based on the accuracy of our measurements we are 90% confident that the biological age of your dog is:

9 years and 0 months (± 18 months)

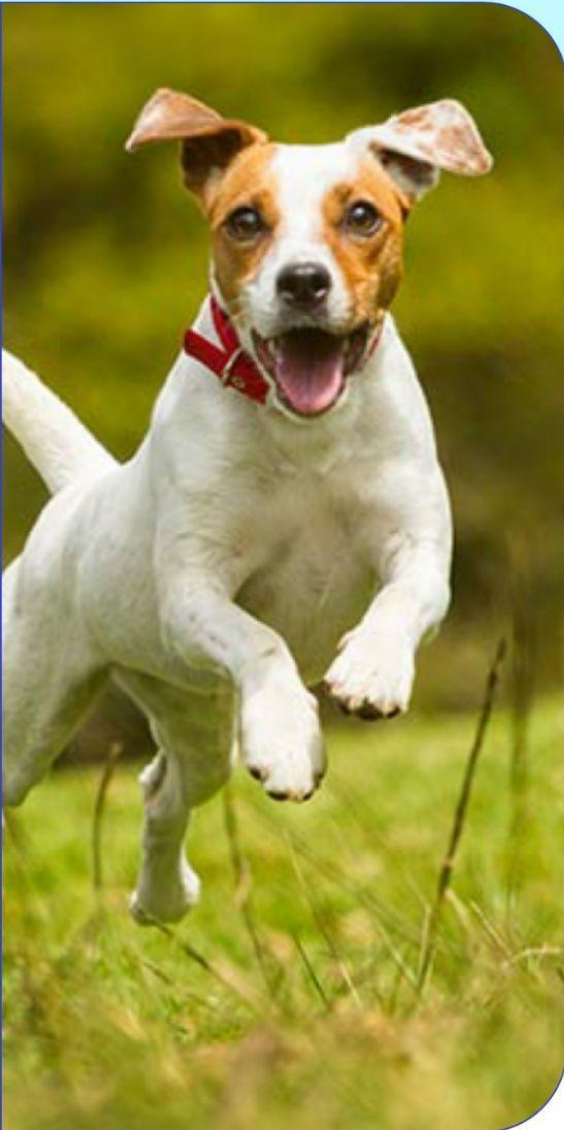


7 years
6 months

9 years
0 months

10 years
6 months

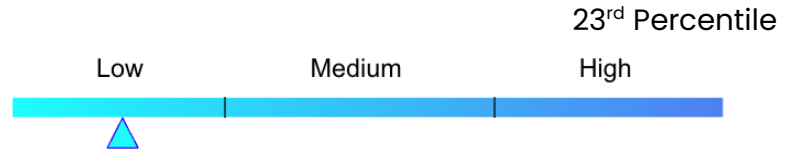




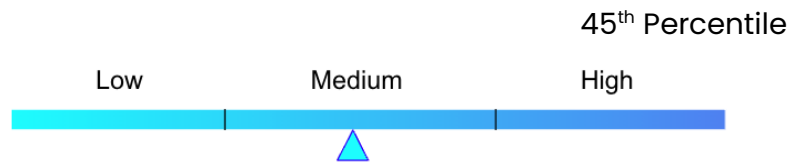
What behavioral traits can we predict?

Based on your dog's epigenetics we predict that they are likely to have the following behavioral tendencies:

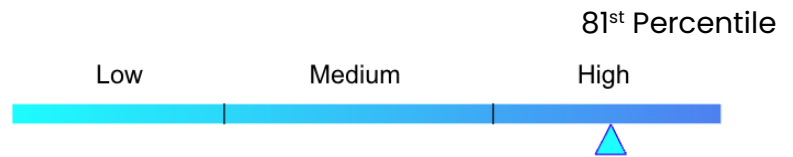
Energy:



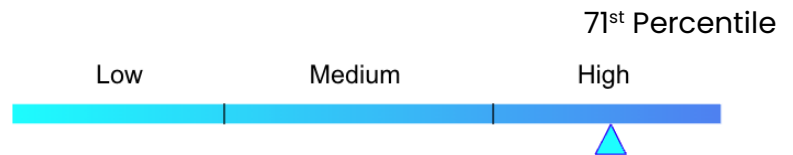
Attachment and Attention Seeking:



Stranger Directed Fear:



Nonsocial Fear:

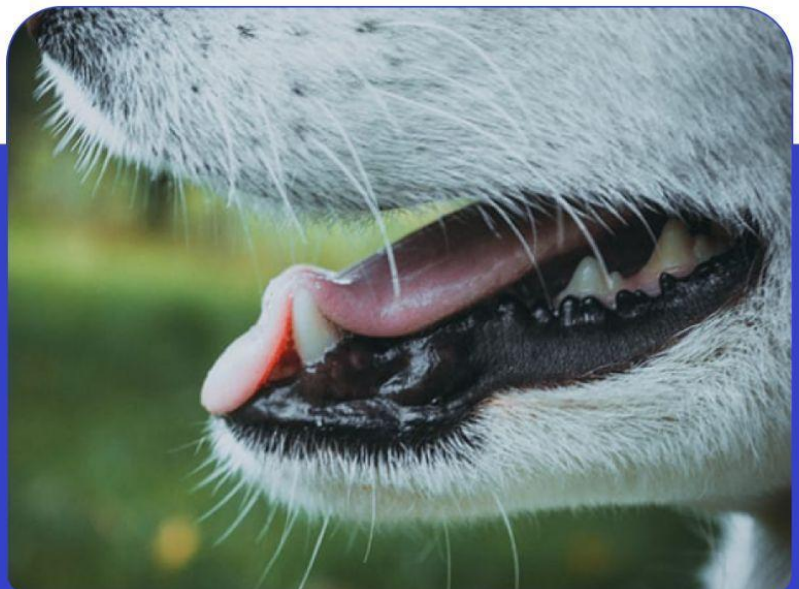


You can find more information about these behaviors in our glossary, or our [FAQ page](#).

What else can you learn about your dog?

We also offer a dog oral microbiome test. This test will allow you to work with your veterinarian to maintain your pup's oral hygiene.

Coming soon: Dog Breed Test



Glossary



Biological Age: Biological age refers to how old a dog is in terms of their bodily function and physical health, rather than their chronological age, which is the number of years since their birth. We determine the biological age of dogs by measuring the chemical changes that naturally occur to a dog's DNA. Usually, biological age closely matches chronological age, but diet, lifestyle, and environmental factors may impact the ageing process and contribute to changes in your dog's DNA.

Energy: Energetic, "always on the go", and/or playful.

Attachment and Attention Seeking: Maintaining close proximity to the owner or other members of the household, soliciting affection or attention, and displaying agitation when the owner gives attention to third parties.

Stranger Directed Fear: Fearful or wary responses when approached by strangers.

Nonsocial Fear: Fearful or wary responses to sudden or loud noises, traffic, and unfamiliar objects and situations.

