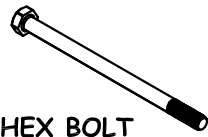


MONKEY PLAYSYSTEM WITH OPTIONAL MONKEYBAR

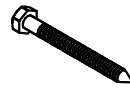
ASSEMBLY INSTRUCTIONS

THROUGH BOLTING INSTRUCTIONS

The following instructions apply to all through-bolting through out the instruction manual. This does no apply to lag screws.

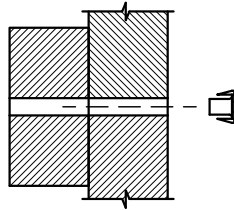


HEX BOLT
(USED FOR THROUGH-BOLTING)



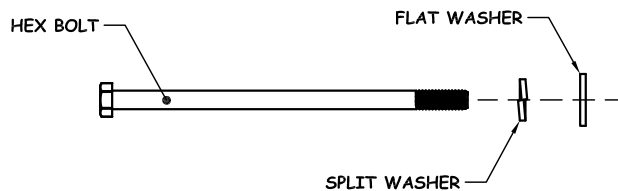
LAG SCREW

1. Hammer the t-nut into the backside of the pre-drilled hole.



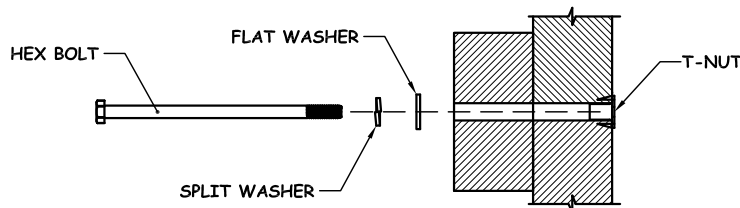
2. Place a split washer and a flat washer onto the bolt.

NOTE: The split washer always goes on the bolt before the flat washer.



3. Insert the bolt into the pre-drilled hole, opposite the side of the installed t-nut and start the bolt by hand.

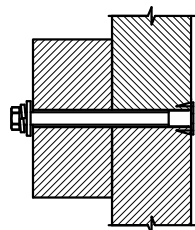
Note: If you can't start the bolt by hand remove the bolt and t-nut and clear any debris from the hole and t-nut.



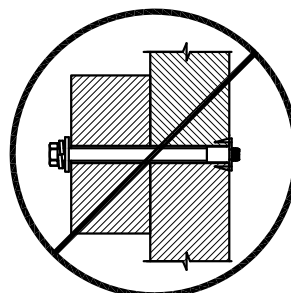
4. Finish tightening down the bolt with the appropriate tool.

Note: Make sure that you do not overtighten the bolt.

The end of the bolt should never protrude past the t-nut.

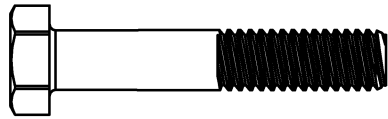
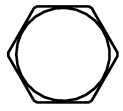


CORRECT

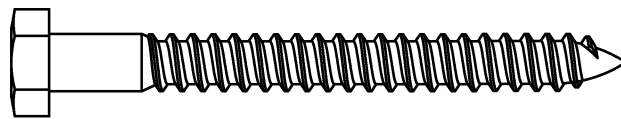
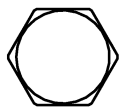


INCORRECT

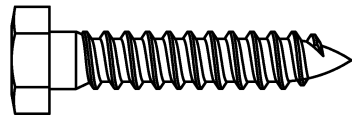
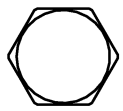
HARDWARE IDENTIFICATION



$\text{\O}5/16'' \times 1-3/4''$ HEX BOLTS (16)



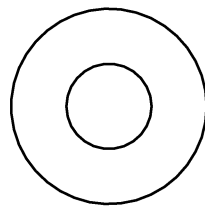
$\text{\O}5/16'' \times 3''$ LAG SCREWS (2)



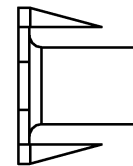
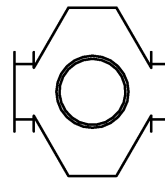
$\text{\O}5/16'' \times 1-1/2''$ LAG SCREWS (2)



2'' DECK SCREWS (4)



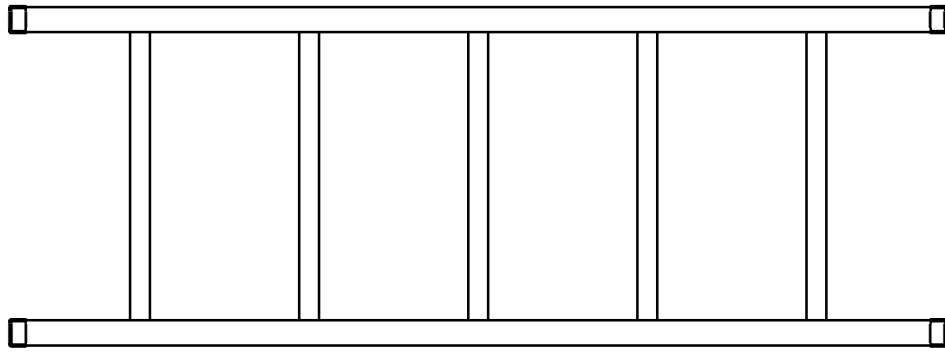
$\text{\O}5/16''$ FLAT WASHERS (20)



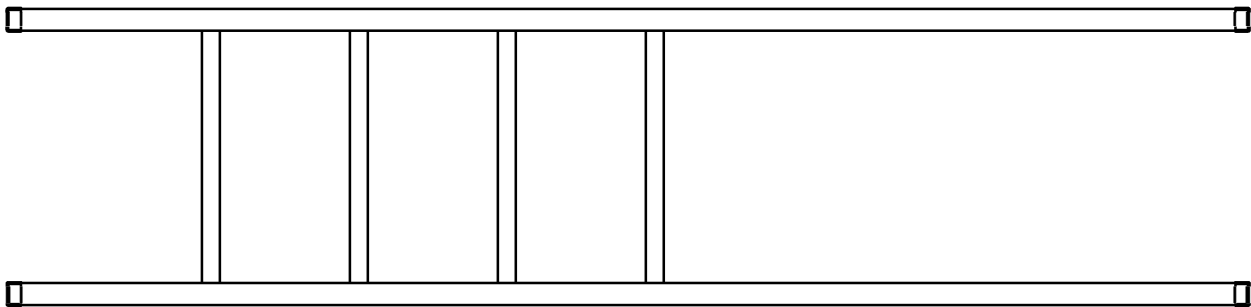
$\text{\O}5/16''$ TEE NUTS (16)

PARTS IDENTIFICATION

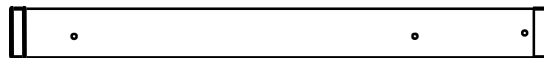
WOOD COMPONENTS



(1) 5' TOP MONKEY BAR



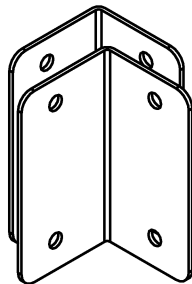
(2) MONKEY BAR LADDERS



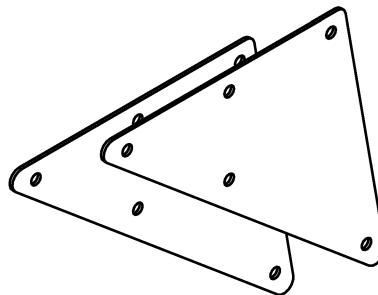
(1) MONKEY BAR SUPPORT

PARTS IDENTIFICATION

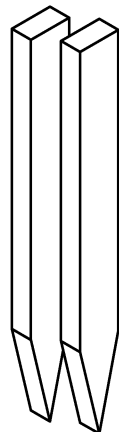
ACCESSORIES



(2) BEAM BRACES



(2) ANGLE BRACES



(2) STAKES

PHASE 1

MONKEY BAR AND LADDER ASSEMBLY

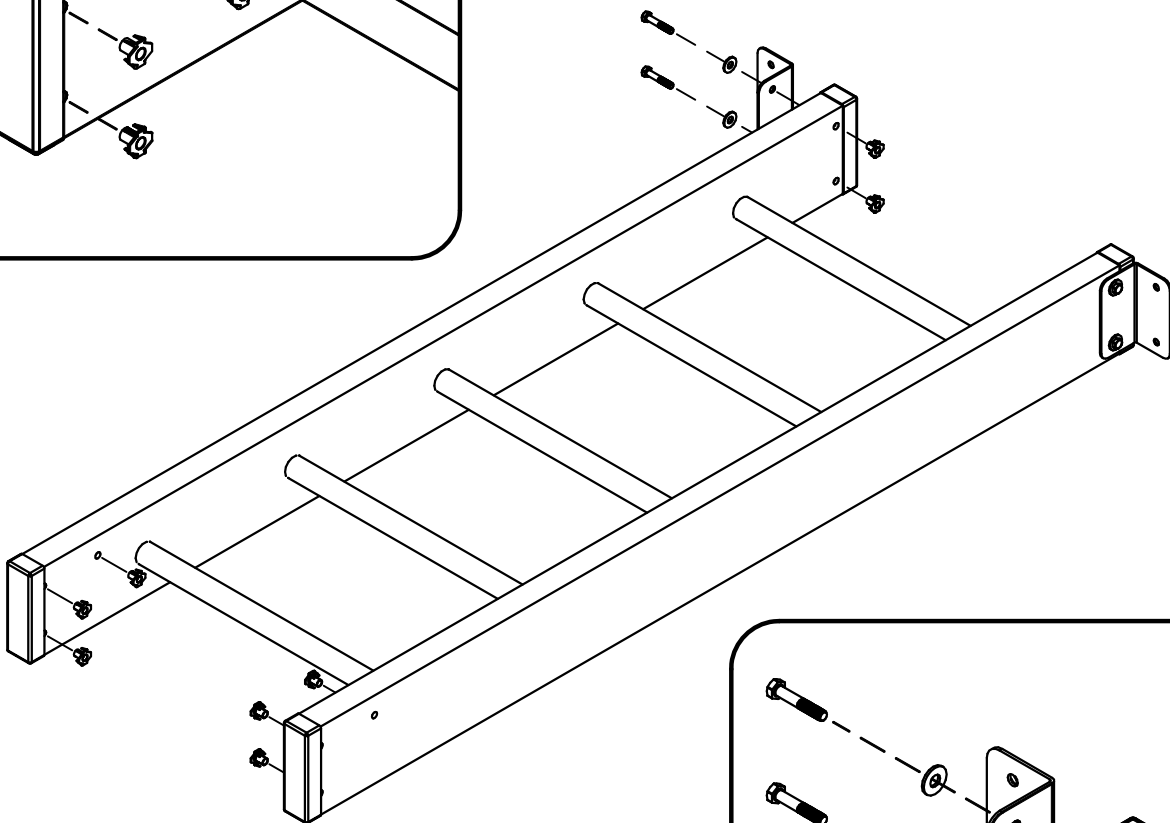
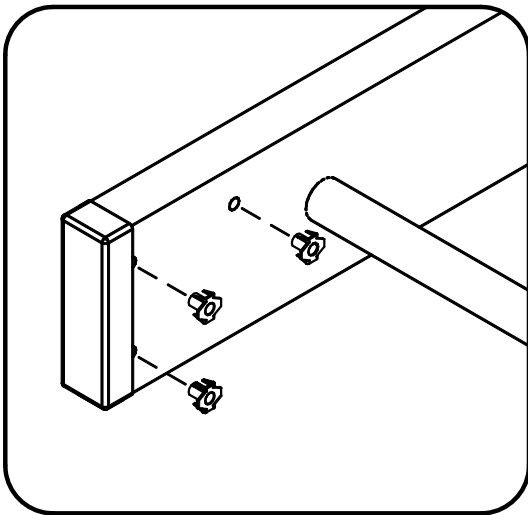
STEP 1: Gather parts and hardware shown in table 1.

STEP 2: Hammer $\varnothing 5/16"$ t-nuts into top monkey bar as shown.

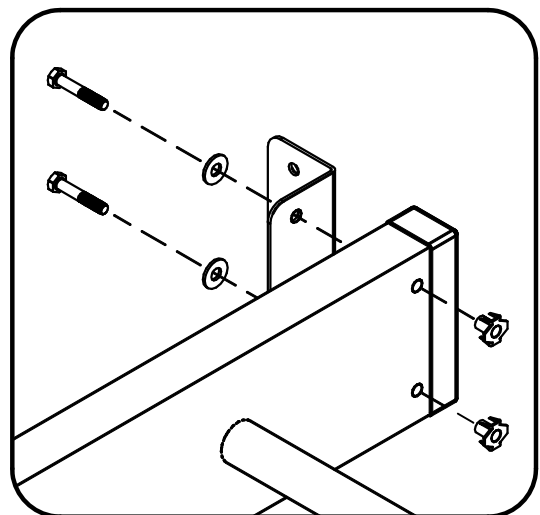
NOTE: Pay close attention to the orientation when installing the t-nuts. you must install the t-nuts in the correct locations.

TABLE 1 - PARTS AND HARDWARE

ID LETTER	DESCRIPTION	QTY
	5' TOP MONKEY BAR	1
	BEAM BRACES	2
	$\varnothing 5/16" \times 1 \frac{3}{4}"$ HEX BOLTS	4
	$\varnothing 5/16"$ FLAT WASHERS	4
	$\varnothing 5/16"$ TEE-NUTS	10



STEP 3: Attached beam braces to top monkey bar with $\varnothing 5/16" \times 1 \frac{3}{4}"$ hex bolts and flat washers.



PHASE 2

MONKEY BAR AND LADDER ASSEMBLY

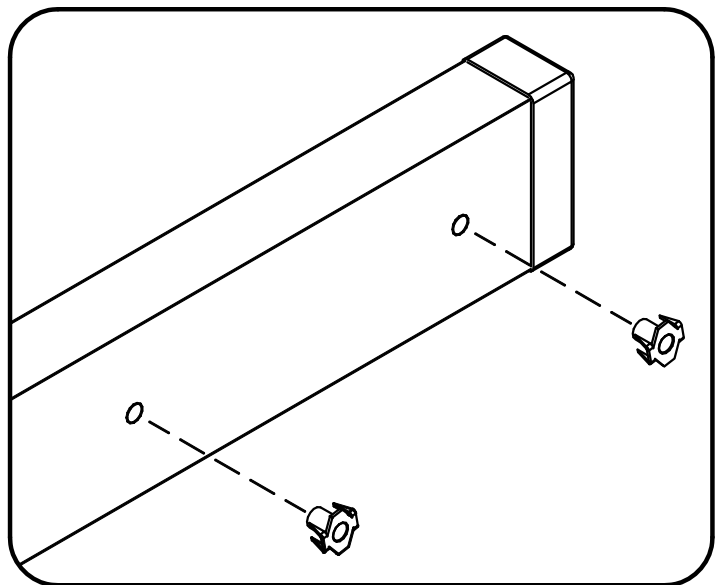
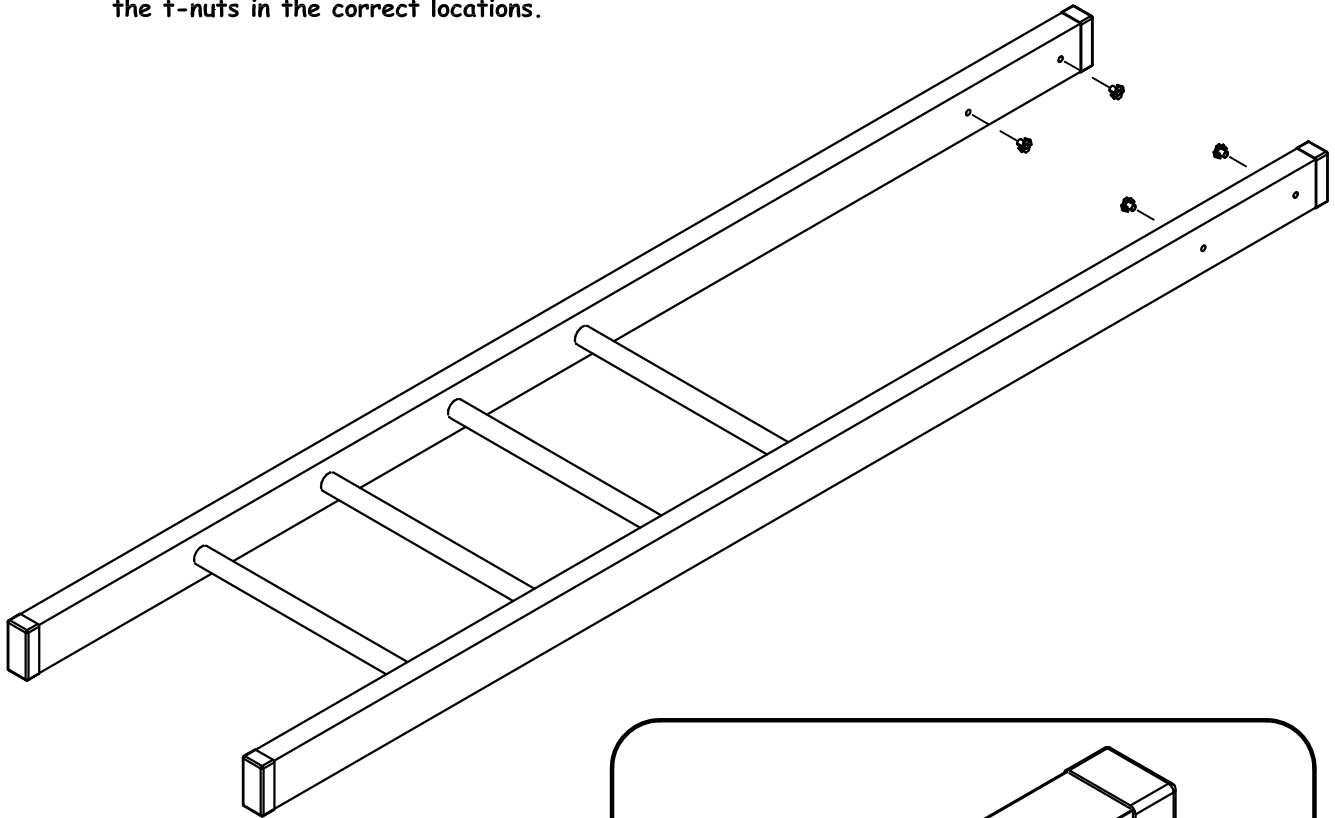
TABLE 2 - PARTS AND HARDWARE

ID LETTER	DESCRIPTION	QTY
	MONKEY BAR LADDER	1
	Ø5/16" TEE-NUT	4

STEP 1: Gather parts and hardware shown in table 2.

STEP 2: Hammer Ø5/16" t-nuts into monkey bar ladder as shown.

NOTE: Pay close attention to the orientation when installing the t-nuts. you must install the t-nuts in the correct locations.



PHASE 3

MONKEY BAR AND LADDER ASSEMBLY

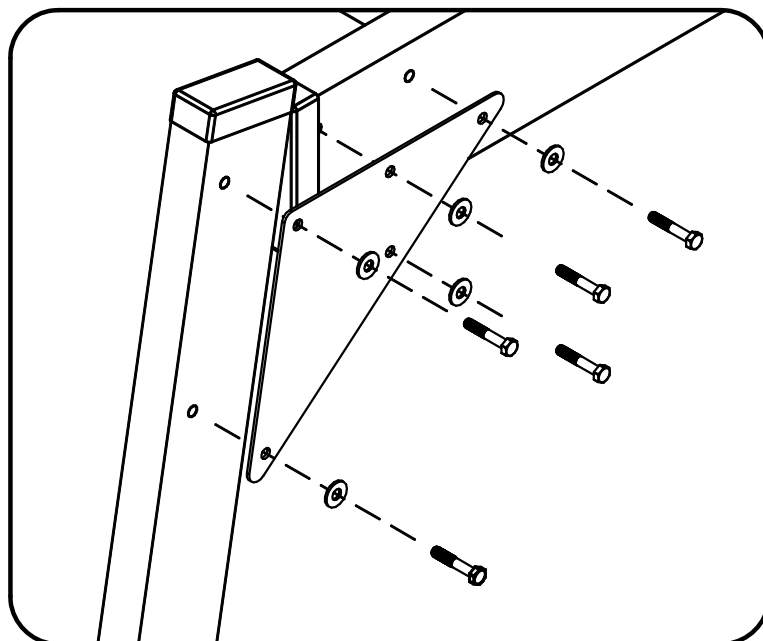
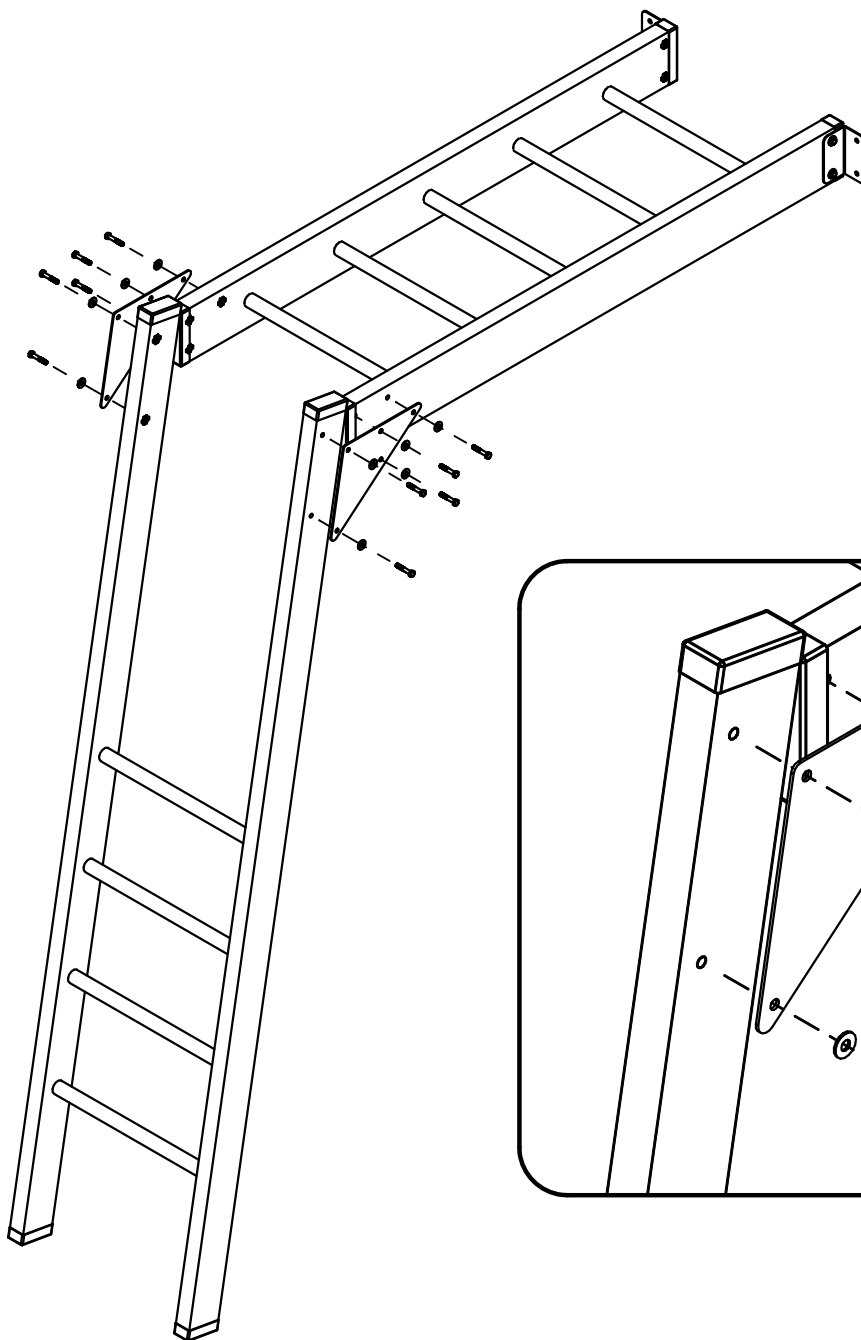
STEP 1: Gather parts and hardware shown in table 3.

STEP 2: Attached angle braces to top monkey bar ladder and monkey bar ladder with Ø5/16 x 1 3/4" hex bolt and Ø5/16" flat washer.

NOTE: An Adult helper is required to hold monkey bar ladder in place until phase 3 is complete.

TABLE 3 - PARTS AND HARDWARE

ID LETTER	DESCRIPTION	QTY
	5' TOP MONKEY BAR	1
	MONKEY BAR LADDER	1
	ANGLE BRACKETS	2
	Ø5/16" x 1 3/4" HEX BOLT	10
	Ø5/16" FLAT WASHER	10



PHASE 5a

MONKEY BAR AND LADDER ASSEMBLY

Monkey playsystems 1 & 2

STEP 1: Gather parts and hardware shown in table 5.

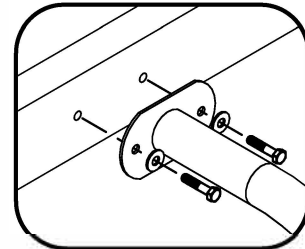
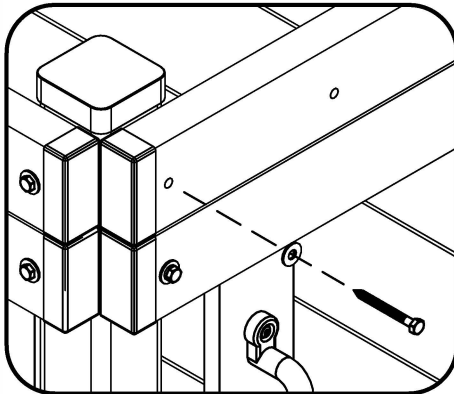
Note: If installing monkey bar on a existing monkey playset remove the firepole first.

STEP 2: Attach monkey bar support to fort upright 'B' with $\varnothing 5/16$ x 3" lag screw and $\varnothing 5/16$ " flat washer.

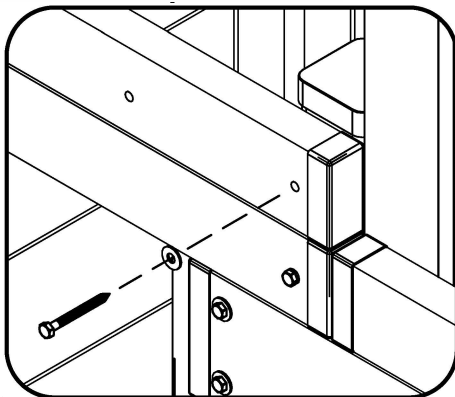
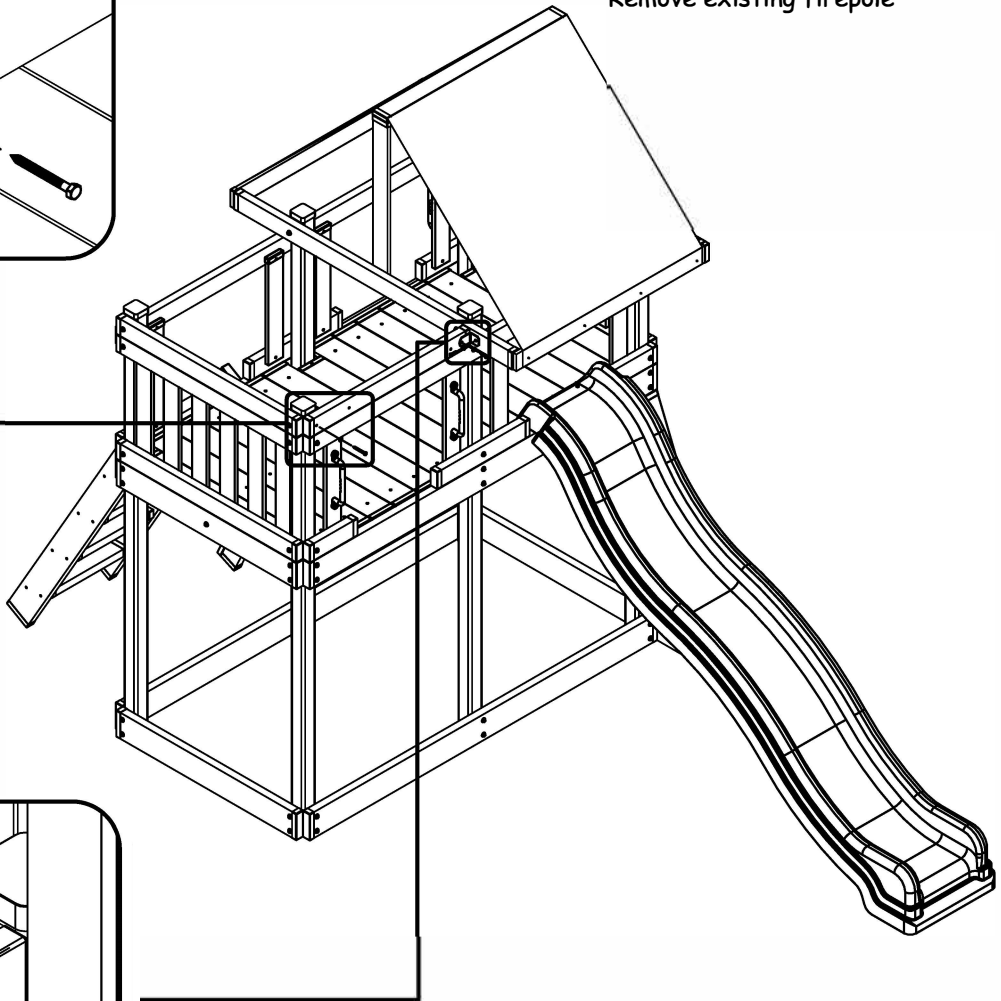
STEP 3: Attach monkey bar support to fort upright 'A' with $\varnothing 5/16$ x 3" lag screw and $\varnothing 5/16$ " flat washer.

TABLE 5 - PARTS AND HARDWARE

ID LETTER	DESCRIPTION	QTY
	MONKEY BAR SUPPORT	1
		1
	$\varnothing 5/16$ " x 3" LAG SCREW	1
	$\varnothing 5/16$ " FLAT WASHER	3



Remove existing firepole



PHASE 5b

MONKEY BAR AND LADDER ASSEMBLY

Monkey playsystems 3 & 4

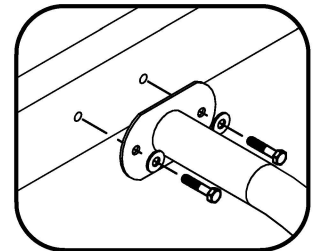
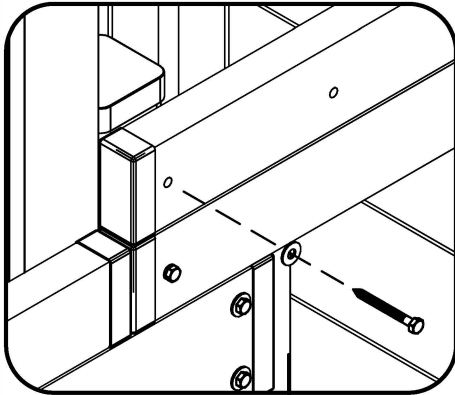
STEP 1: Gather parts and hardware shown in table 5.

Note: *If installing monkey bar on a existing monkey playset remove the firepole first.*

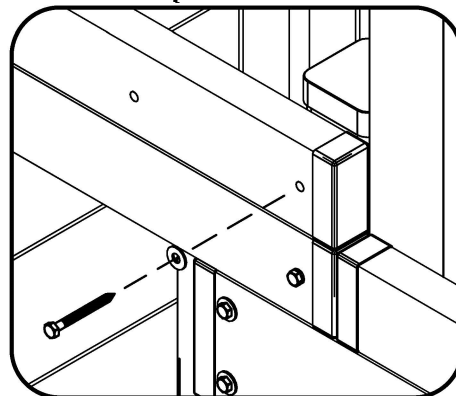
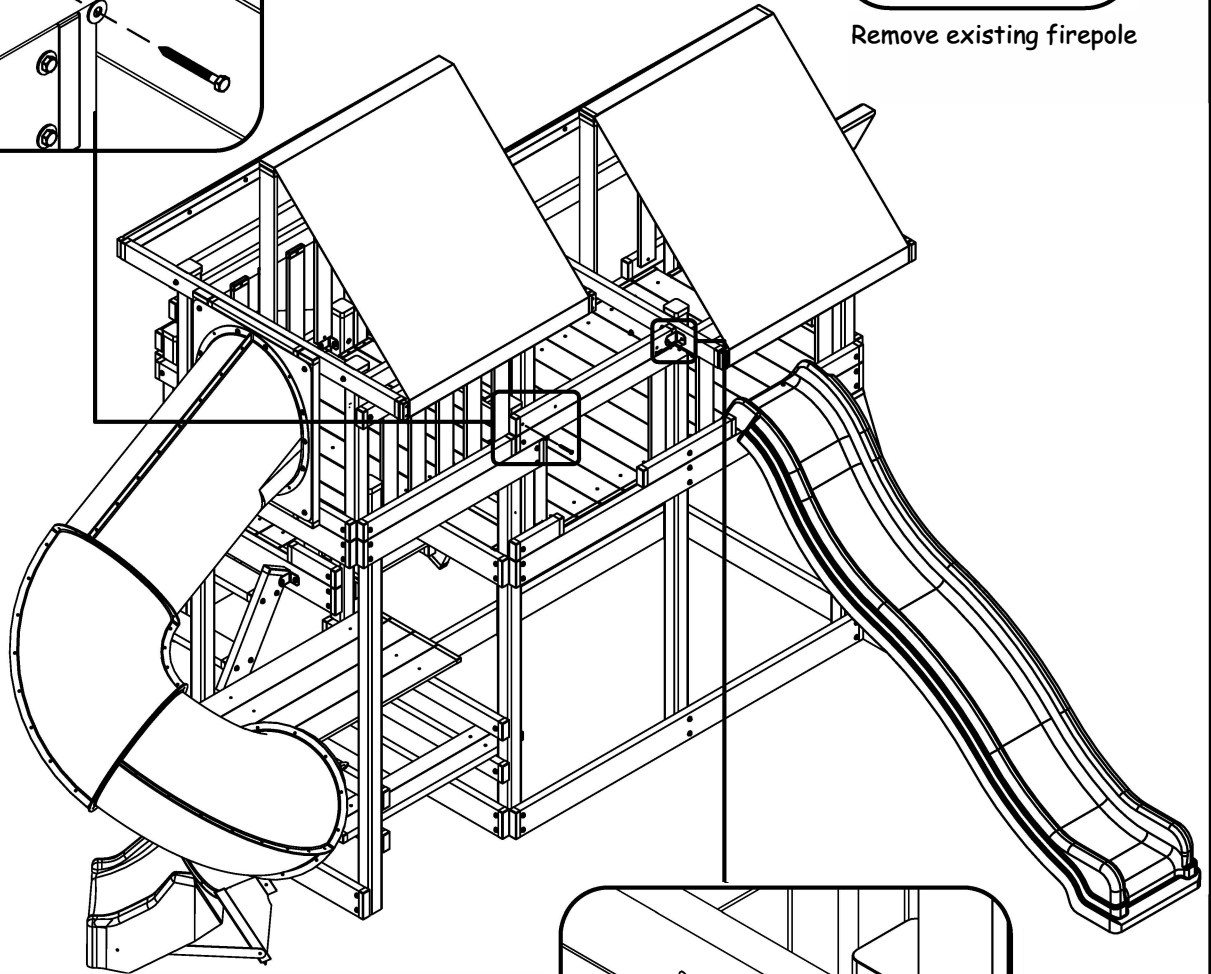
STEP 2: Attach monkey bar support to fort upright 'B' and 'A' with $\varnothing 5/16$ x 3" lag screw and $\varnothing 5/16$ " flat washer.

TABLE 5 - PARTS AND HARDWARE

ID LETTER	DESCRIPTION	QTY
	MONKEY BAR SUPPORT	1
		1
	$\varnothing 5/16$ " x 3" LAG SCREW	1
	$\varnothing 5/16$ " FLAT WASHER	2



Remove existing firepole



PHASE 6

MONKEY BAR AND LADDER ASSEMBLY

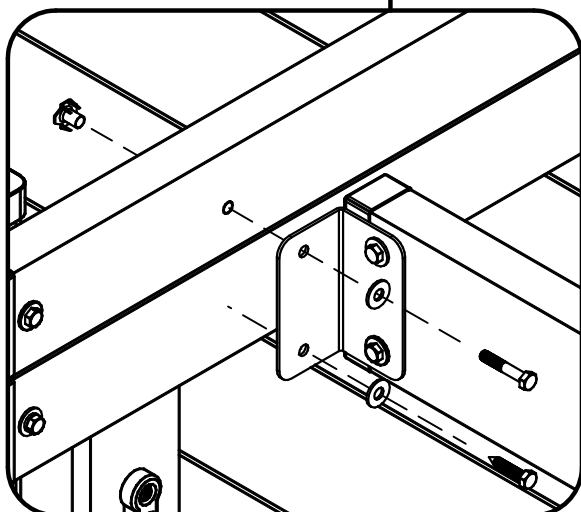
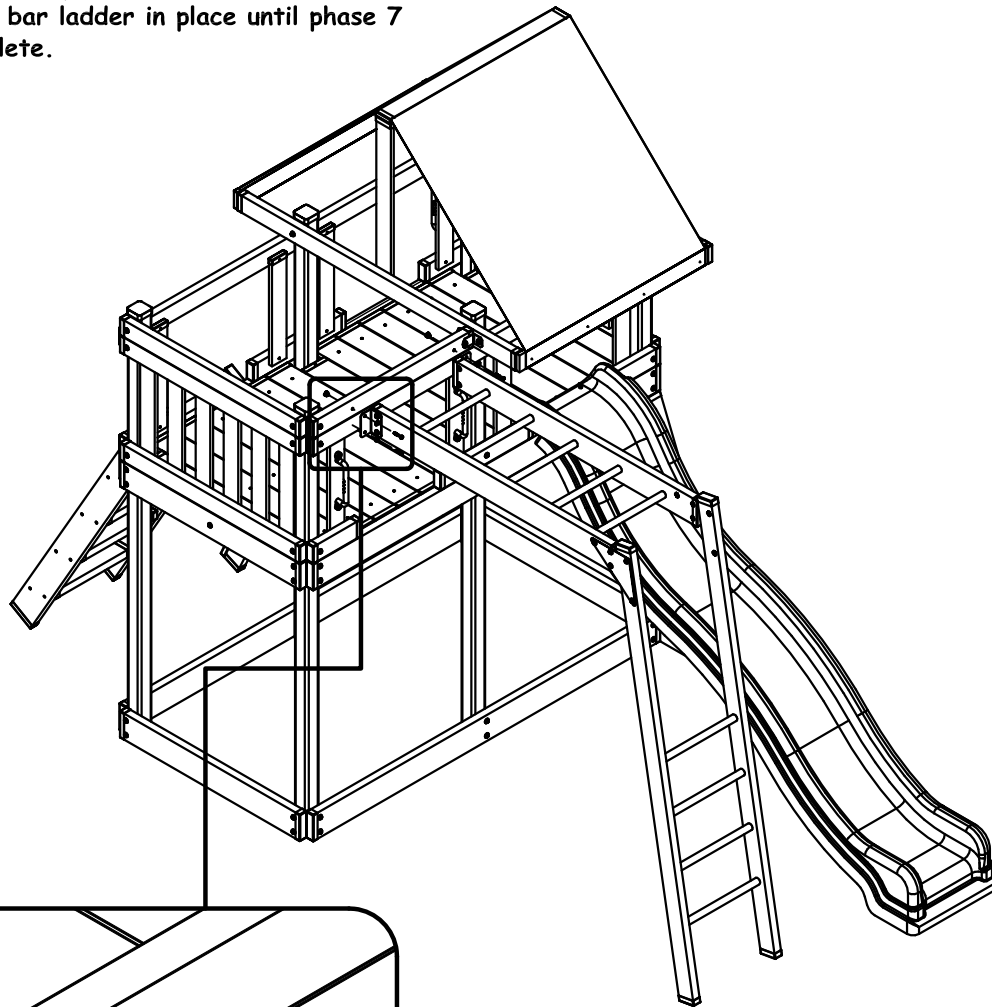
STEP 1: Gather parts and hardware shown in table 6.

STEP 2: Hammer $\varnothing 5/16$ " tee- nut into monkey bar support.

NOTE: An Adult helper is required to hold monkey bar ladder in place until phase 7 is complete.

TABLE 6 - PARTS AND HARDWARE

ID LETTER	DESCRIPTION	QTY
	MONKEY BAR AND MONKEY BAR LADDER ASSEM	1
	$\varnothing 5/16$ " x 1 3/4" HEX BOLTS	2
	$\varnothing 5/16$ x 1 1/2" LAG SCREWS	2
	$\varnothing 5/16$ " FLAT WASHERS	4
	$\varnothing 5/16$ " T NUTS	2



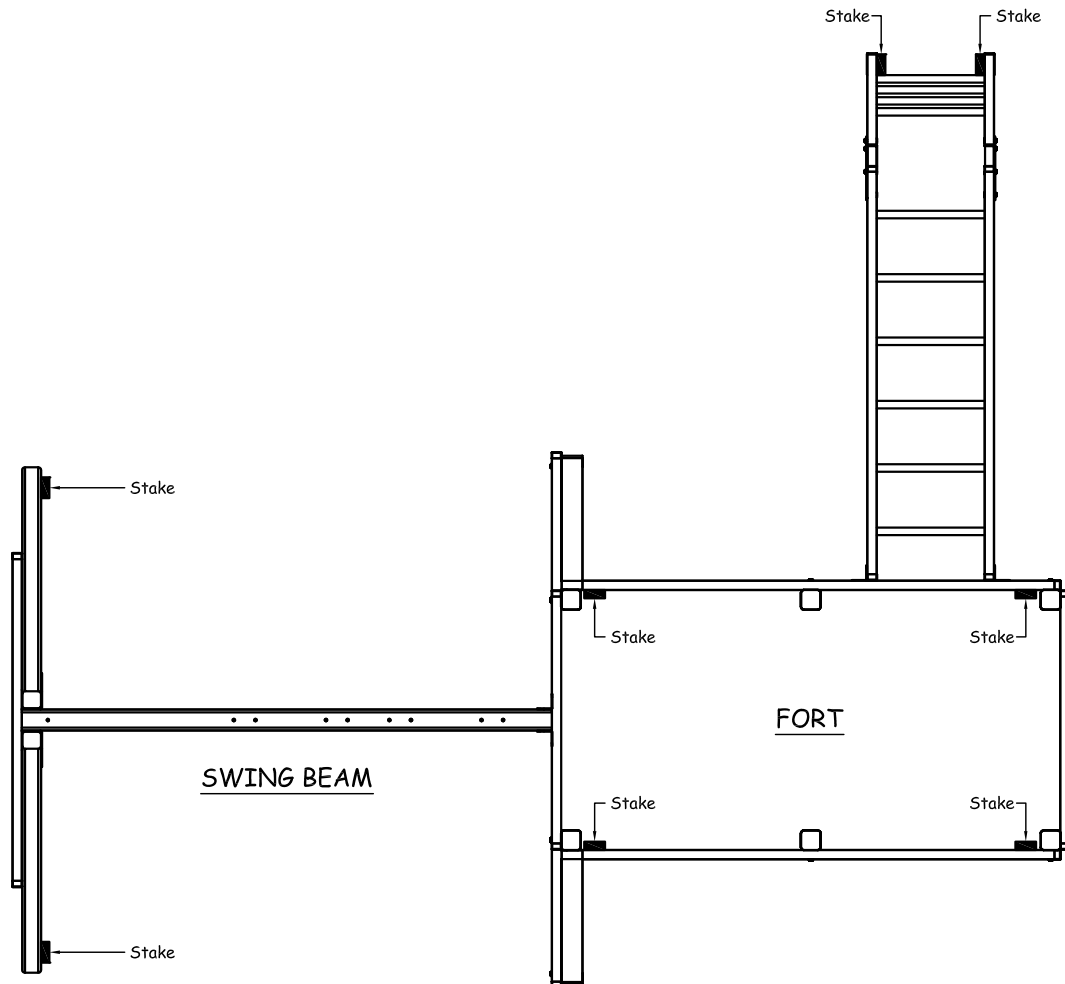
STEP 2: Attached monkey bar and monkey bar ladder assembly to monkey bar support with $\varnothing 5/16$ x 1 3/4" hex bolt and $\varnothing 5/16$ " flat washer.

STEP 3: Finish attaching monkey bar and monkey bar ladder assembly to wall rail 'J' with $\varnothing 5/16$ x 1 3/4" hex bolt and $\varnothing 5/16$ " flat washer.

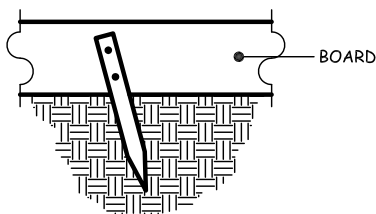
PHASE 7

ANCHORING INSTRUCTION

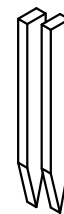
Failure to use stakes can void warranty, cause injury.



Drive stake into ground and attach with (2) 2" deck screws.



Stake must be located as shown



STANDARD WOOD STAKE

