

7 ft. Turbo Twister Slide
Assembly Manual ver.4

Assembly Manual for 7 ft Turbo Twister Slide

Tools needed for assembly:

1/2" socket and socket wrench
1/2" wrench

Optional Tools:

cordless impact drill
socket adapter
1/2" Ratchet wrench
Electric drill
3/8" drill bit

HARDWARE:

(98) 5/16" x 1" bolts



(217) 3/8" washers



(96) 5/16" lock nuts



(23) 5/16" x 1-1/2" lag bolts



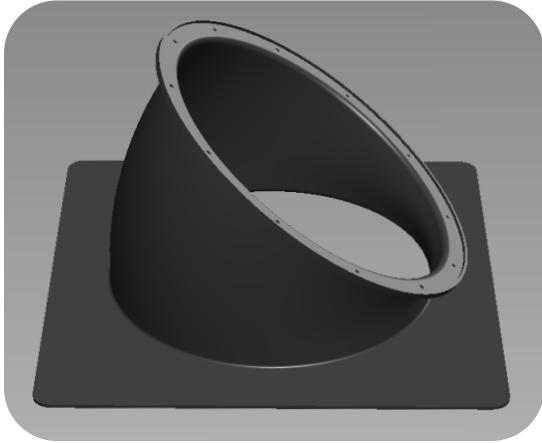
-(1) 14" Turbo Twister Chain



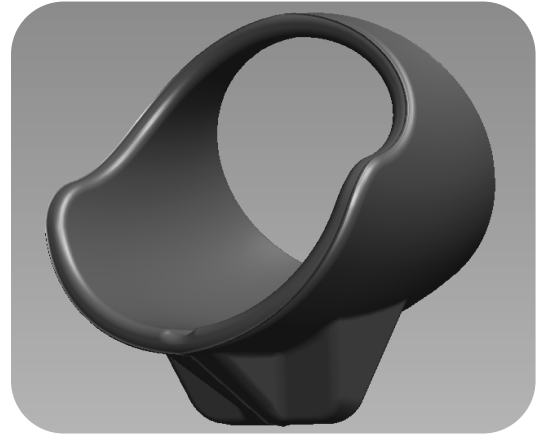
Assembly Manual for 7 ft Turbo Twister Slide

Parts:

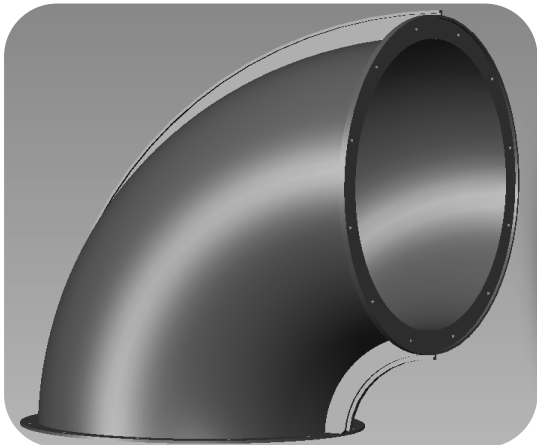
(1) Entry Tube with Cover plate



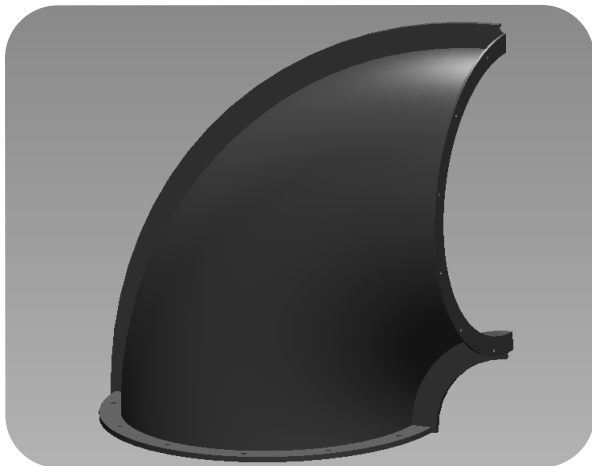
(1) Tube Slide Exit



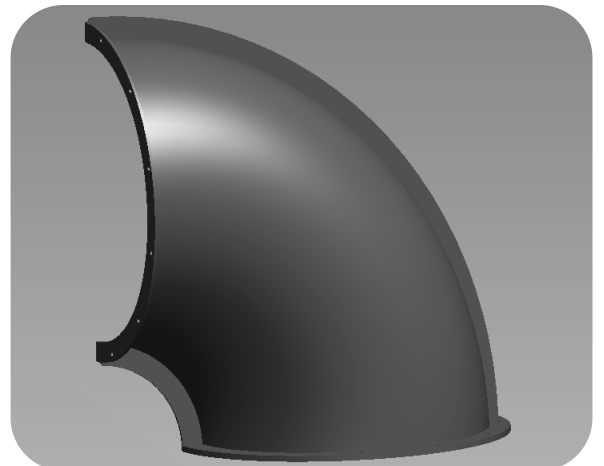
(4) 90 Degree Elbows



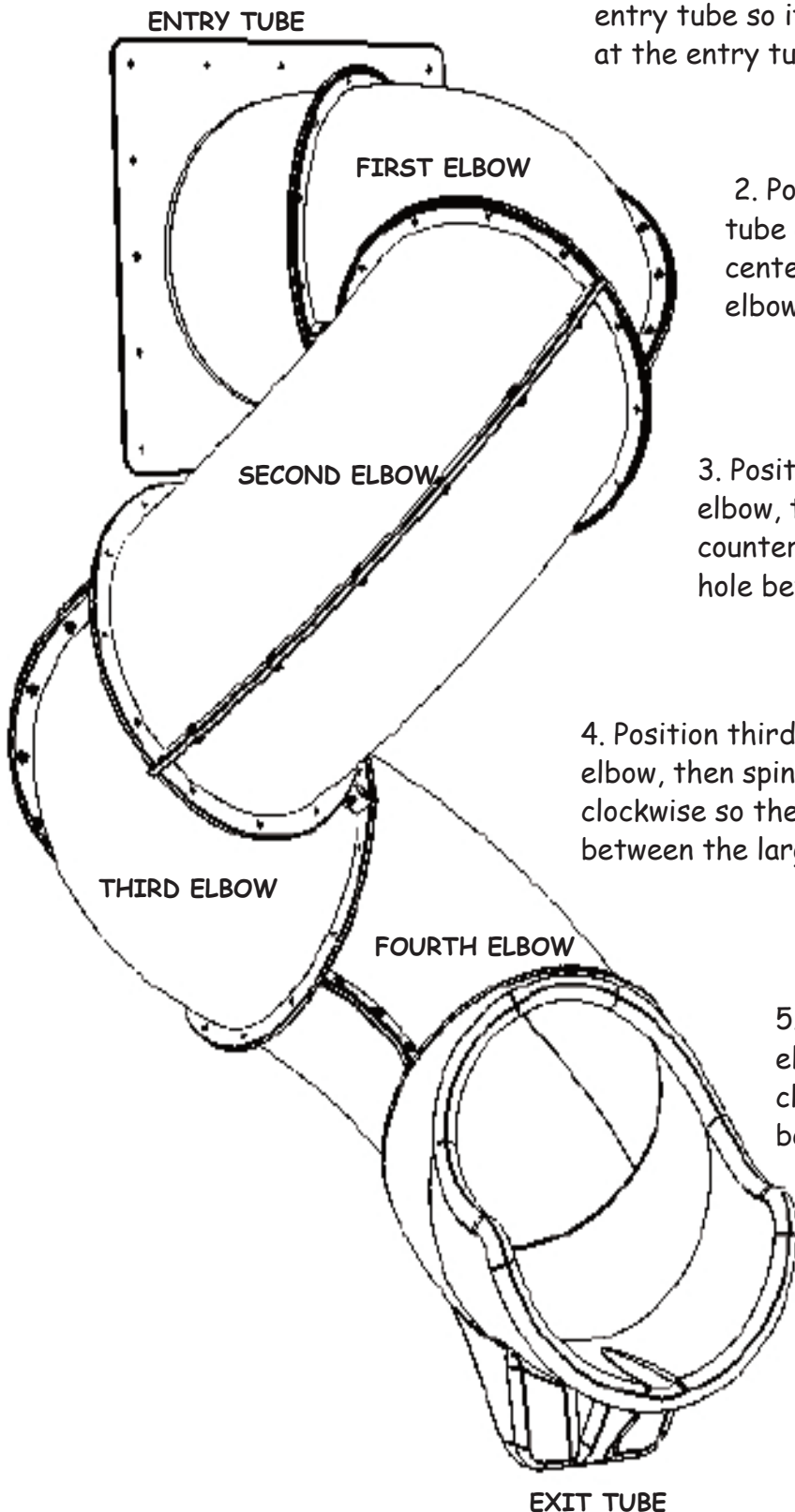
NOTE: The last tube section before the exit may have the overlap end trimmed short to fit on Tube Slide Exit. Make sure both halves of tube have trimmed overlap at same end.



Elbows
Consists of
(4) Bottom
and (4) Top
Halves



Quick Reference Guide



1. Assemble four elbows, then position entry tube so it turns to right side looking at the entry tube from this viewpoint.

2. Position first elbow against entry tube and align small rib flange with left center of entry tube. Then turn first elbow counter clockwise one bolt hole.

3. Position second elbow against first elbow, then spin second elbow counter clockwise so there is one bolt hole between the large rib flanges.

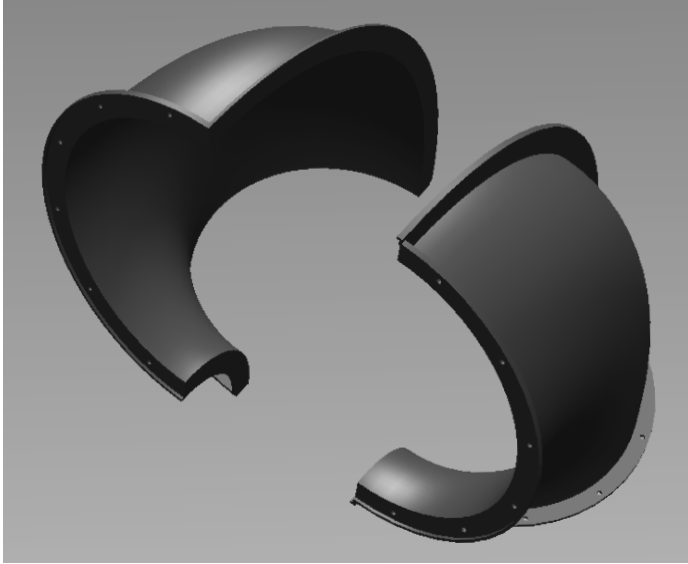
4. Position third elbow against second elbow, then spin third elbow counter clockwise so there is two bolt holes between the large rib flanges.

5. Position fourth elbow against third elbow, then spin fourth elbow counter clockwise so there is two bolt holes between the large rib flanges.

6. Turn exit tube so there is two bolt holes between top of exit tube and small rib flange on fourth elbow. Make sure that both sides of exit are horizontal.

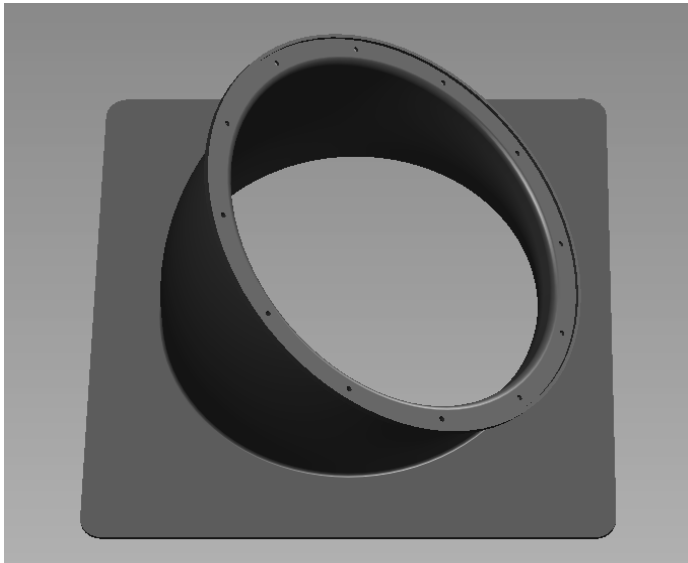
A s s e m b l y P r o c e s s

STEP #1



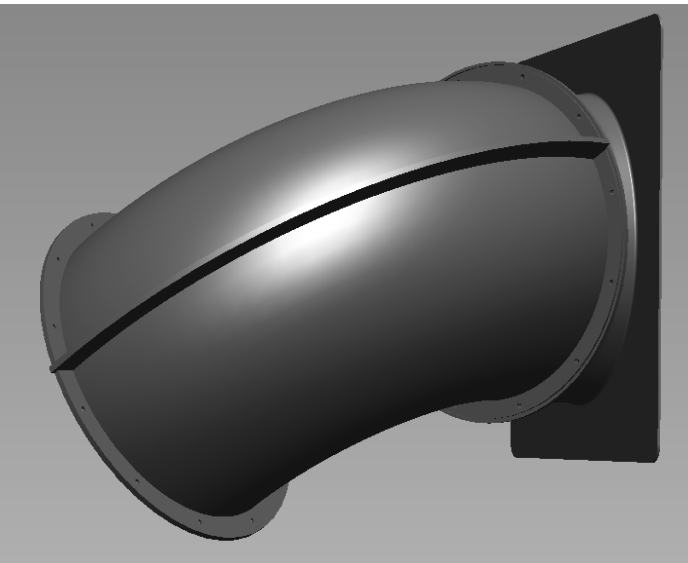
Assemble four elbows. Insert (12) bolts with washers through holes on overlap side of joining flanges. Secure bolts with (12) washers and locknuts on flange side of joining flanges then tighten with tools. Make sure overlaps and flanges are at same ends on both halves before assembly.

STEP #2



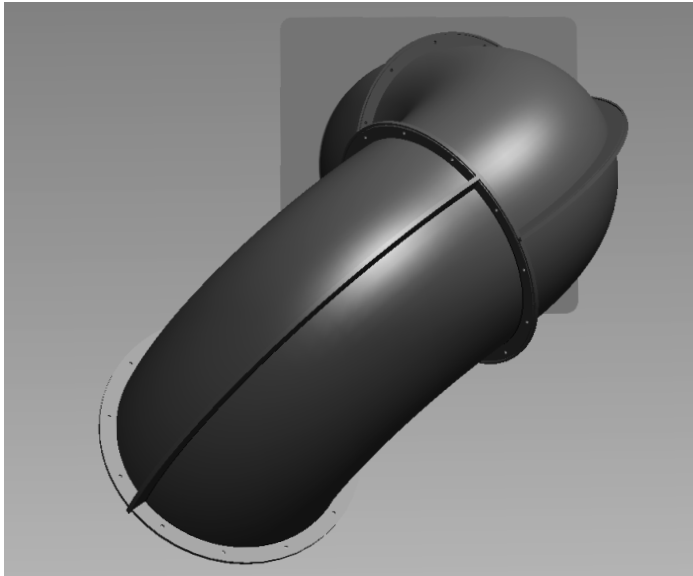
Turn Entry Tube so that it angles to the right side of opening. Center Entry Tube in opening and make sure bottom of Entry Tube hole is flush at 7 ft deck level. Secure Entry Tube with (12) lag bolts with washers around outside perimeter of cover plate.

Step #3



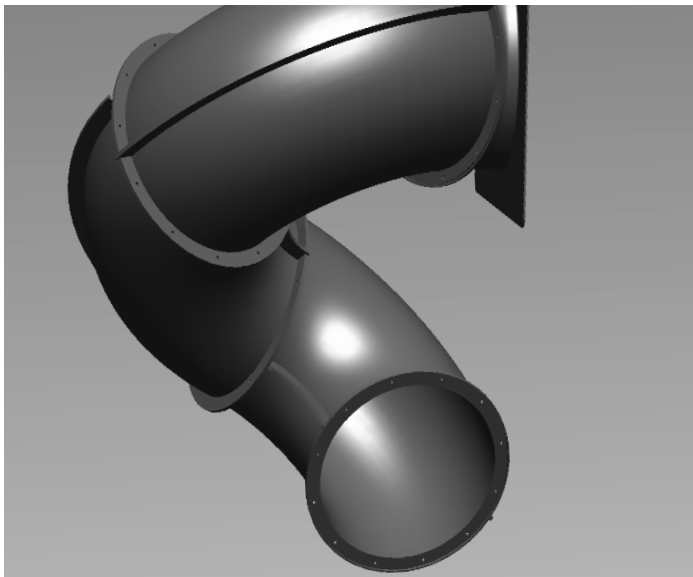
Position flange end of Elbow against overlap end of Entry Tube. Turn Elbow to left so that the joining flanges are horizontal. Then turn Elbow one bolt hole counter-clockwise. Secure Elbow section to Entry Tube with (12) bolts, (24) washers, and (12) locknuts. Start locknuts on bolt threads and then tighten with tools.

A s s e m b l y P r o c e s s



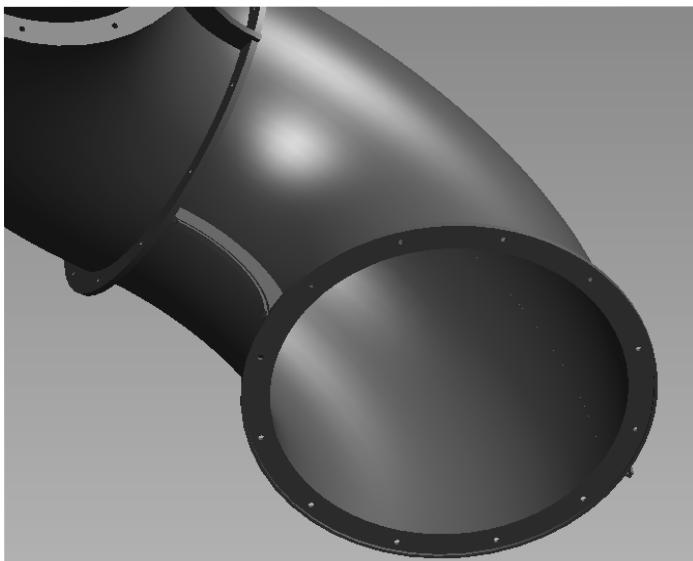
Step #4

Position second Elbow flange end against first Elbow overlap end so large joining flanges line up. Turn second elbow counterclockwise one bolt hole and then secure with (12) bolts, (24) washers, and (12) locknuts.



Step #5

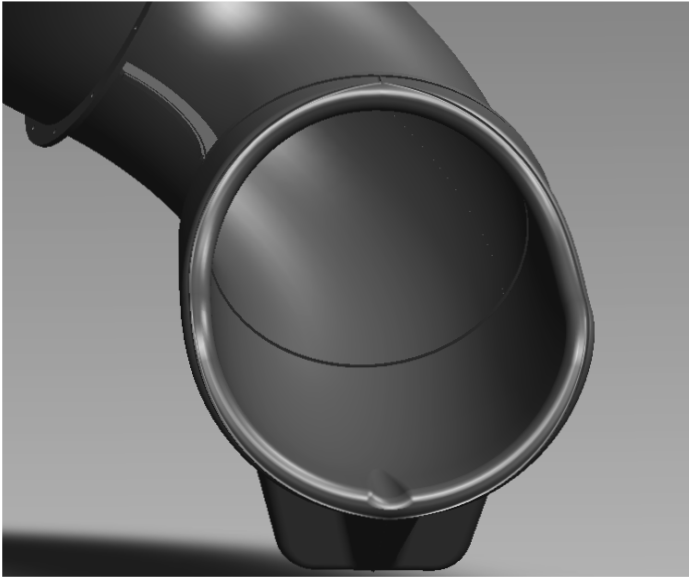
Position third Elbow with flange end against second Elbow overlap end so large joining flanges line up. Turn third Elbow counterclockwise two bolt holes and then secure with (12) bolts, (24) washers, and (12) locknuts.



Step # 6

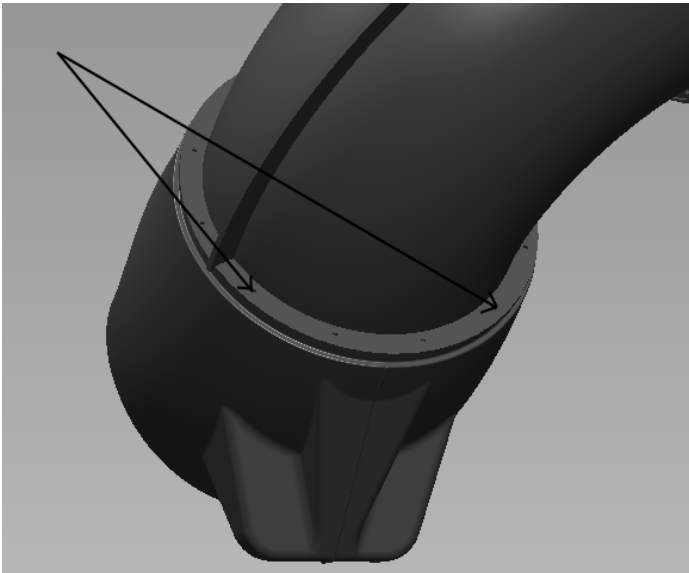
Position fourth Elbow with flange end, against third Elbow overlap end so large joining flanges line up. Turn fourth elbow counterclockwise two bolt holes and then secure with (12) bolts, (24) washers, and (12) locknuts.

A s s e m b l y P r o c e s s



Step # 7

Install Tube Slide Exit section against trimmed overlap end of fourth Elbow. Loosen bottom bolts of Elbow on either side of joining flanges for better hole alignment. Install tube slide exit against fourth elbow flange so that sides of Tube Slide Exit are level and there are two holes between the small rib joining flange of the elbow and the top center of the exit.



Step # 8

Secure over lap end of last Elbow Tube to Tube Slide Exit with (2) 5/16" bolts with washers. Secure two bolts into pressed nuts near the bottom of the Exit making sure the exit is level at both sides. Install 5/16" x 1-1/2" lag bolts with washers through remaining ten holes in elbow flange into plastic of the exit section, taking care not to overtighten lag bolts in plastic.

Step # 9

Install 14" chain at bolt hole closest to upright on play set structure. Remove bolt from flange and insert bolt through one end of chain then secure bolt to tube slide flange. Pull upward tightly on chain and then secure the other end of the chain with a lag bolt and washer to upright on structure.



Step # 10

Check to make sure all bolts and lags are secured tightly on tube slide. Do not over-tighten locknuts and lag bolts.

SAFETY PRECAUTIONS

- Make sure to properly follow instruction manual for your specific slide.
- Make sure the play structure that you are attaching the slide to is sturdy and able to support this type of equipment.
- Check and make sure all hardware is secured properly. This will need to be done as routine maintenance program on all playground equipment.
- This product is made to be used as a playground slide exclusively.
- If for any reason installation can not be completed thoroughly; do not leave slide or opening on play equipment in a unsafe manner to which injuries may occur.
- Please check with CPSC's recommendation for safety on their web site and follow their most recent handbook.
www.cpsc.gov/cpscpub/pubs/324.pdf



Assembled 7ft Turbo Twister Slide

Proper installation and safety is the responsibility of the installer.

Please contact Atlas Molding if any problems occur with the installation. (717)556-8193