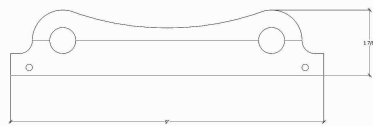


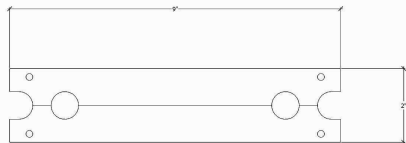


FITTINGS

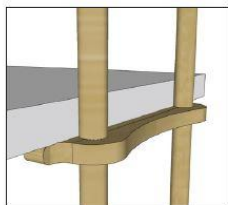
METAL COLLECTION



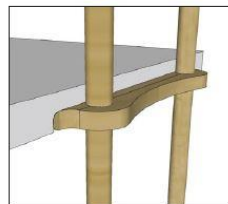
END PLATE



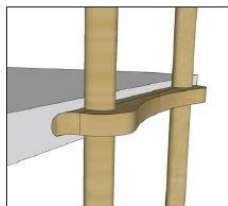
JOINING PLATE



UNDERMOUNT



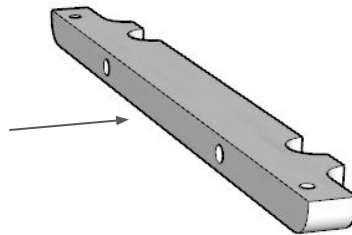
RABBETED



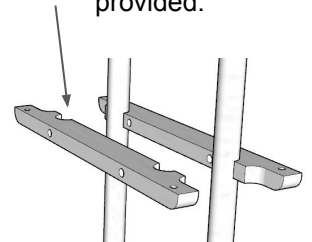
MORTISED

BRACKET ATTACHMENT PLATES

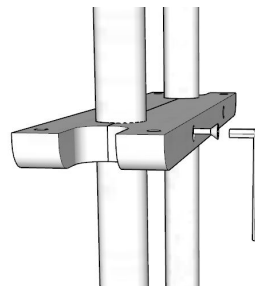
- A.** Locate the flat side of the attachment plate containing holes for screws.



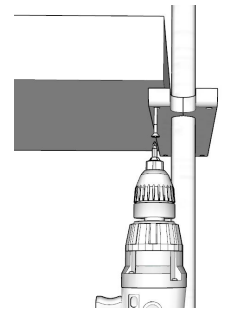
- B.** Place each half of the attachment plate independently around the metal bracket rod in the center spaces provided.



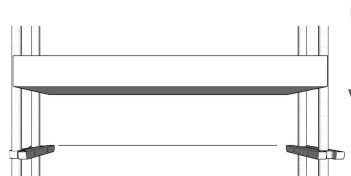
- C.** With each half of the attachment plate pressed together, tighten to secure plate.



- D.** Drill screws through the bottom of the attachment plate into shelving or cabinets.



- E.** Note: Before mounting shelves or cabinets - be sure to have two level bracket attachments in place prior to placement of product.



- F.**

