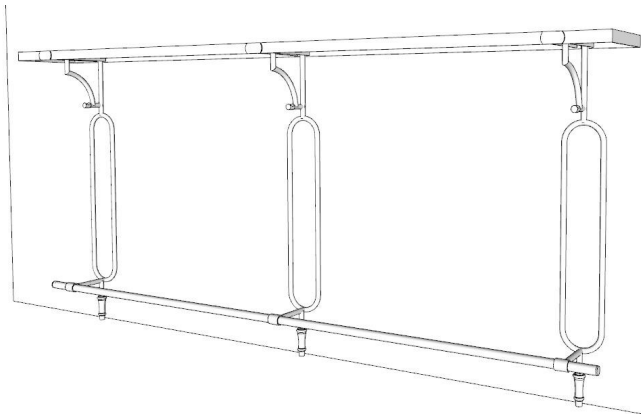




FITTINGS

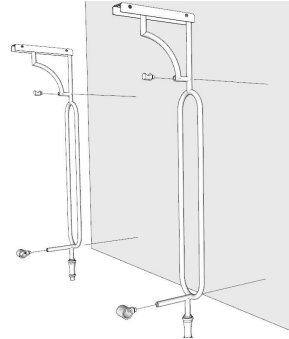
METAL COLLECTION

BAR SUPPORT SYSTEM WITH FOOT RAIL WALL MOUNTED APPLICATION

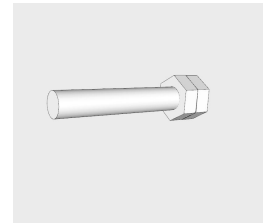


We recommend professional installation with all of our products to ensure that all the attachments and blocking considerations are met. Weight limitations and number of fasteners should be considered by the final user and professional installer.

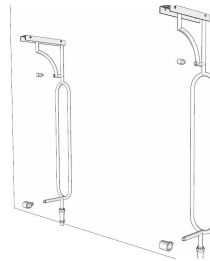
- A.** Mark center locations for connections for the purse hook and foot rail bracket.



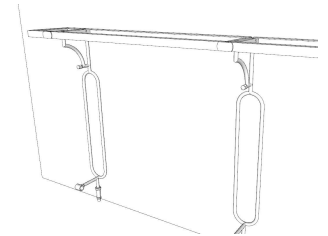
- B.** Place two 5/16" nuts onto the supplied rail bolts to drive the bolts into the wall studs/blocking. Leave 2-1/2" length from wall for top bolt and 5-1/2" length for bottom bolt.



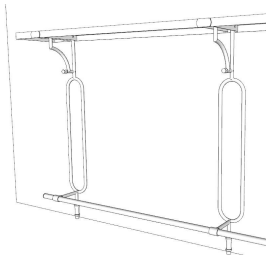
- C.** Remove 5/16" nuts from bolts. Slide supports onto exposed bolts. **DO NOT** fully tighten purse hook or foot rail bracket at this point.



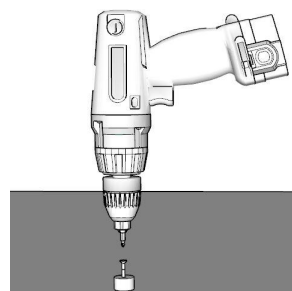
- D.** Install top angle iron pieces and decorative end pieces using supplied hardware, making sure it is level. Make any adjustments for feet at this time.



- E.** Once all pieces are in their final position and level, tighten all connections. Slide foot rail pieces into brackets and tighten with provided set screws.



- F.** *Optional: For additional support-foot can be secured to floor. Screw nylon bushing into desired location on floor.



- G.** *Optional: Foot sleeve fits over nylon bushing to secure to floor.

