

Textures II

SCHUMACHER

Textures II

Our most versatile texture collection yet, Textures offers an array of sophisticated weaves in a useful range of exquisite colors. Truly luxurious and utterly practical, these stylish, hardwearing fabrics are equally at home in traditional and modern settings. They layer beautifully with other fabrics, provide a grounding element in the presence of patterns and add the textural dimension that every room needs.



Why you’ll love this collection:

The ultimate destination for texture. If you’re looking for more than a plain solid, this is where you’ll find a useful range of unique, foundational fabrics in a variety of price points.

Quality and craft. From plush alpaca to tough faux leather, the extraordinary woven designs in this collection are nuanced by beautiful, unexpected materials.

Always au courant. You’ll turn to these classic constructions again and again for textural patterns that never go out of style.



pattern index

FABRICS	
DIMA.....	5
HALLINGDAL.....	6
ESMARK.....	7-8
AUCKLAND.....	9
GUTHRIE.....	10
ALPINE.....	11-12
TUNDRA.....	13-14
MONTANE.....	15
BABE’S TWEED.....	16
ARLO.....	17
DIXON MOHAIR WEAVE.....	18
YUMA.....	19
ROSCOE.....	20
MORROW.....	21
ARTISANAL BOUCLE.....	22
ALBERS WEAVE.....	23
HURSTON.....	24

TEXTURES II
FABRICS



GREY **76390**



NATURAL **76391**



MINERAL **76392**



INDIGO **76393**

Dima

An unusual jacquard weave of multi-width yarns gives Dima a pronounced, slubby texture and a handwoven look. It's a sturdy and stylish option for upholstery.

WIDTH **53 3/4" (137CM)**
MATCH **Straight**
CONTENTS **68% Linen, 32% Viscose**
COUNTRY **Italy**
CARE **Dry Clean Only**
ABRASION **Martindale 20,000**
APPLICATION **Upholstery**

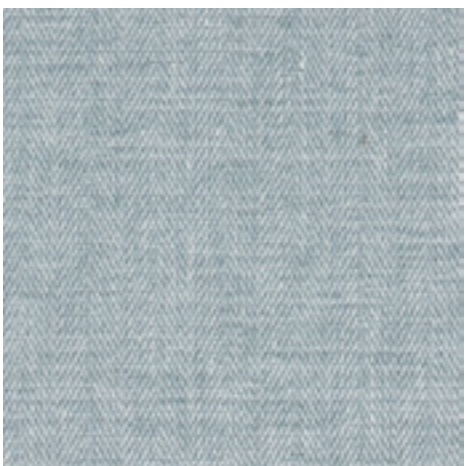
TEXTURES II
FABRICS



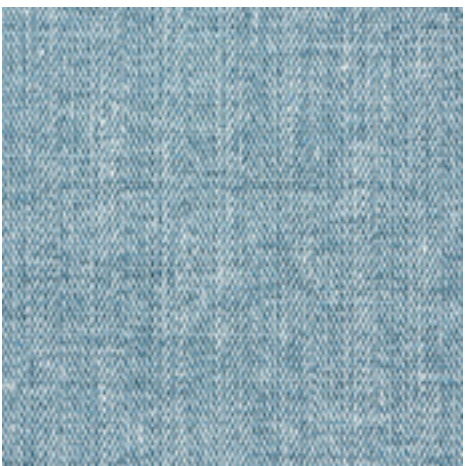
GREIGE **76440**



PEBBLE **76441**



SKY **76442**



DENIM **76443**

Hallingdal

Inspired by menswear fabrics, Hallingdal is a super soft washed herringbone weave that is suitable for upholstery and lends warmth and sophistication to any room.

WIDTH **55 1/2" (141CM)**
MATCH **Straight**
CONTENTS **37% Linen, 27% Viscose, 20% Cotton, 16% Polyester**
COUNTRY **Italy**
CARE **Dry Clean Only**
ABRASION **Martindale 30,000**
APPLICATION **Multipurpose**



DOVE 76400



IVORY 76401

Esmark

Esmark’s featherlight blend of wool, mohair and alpaca yarns creates a soft, nubby weave with an offset stripe effect. It’s deliciously cozy for pillows or upholstery.

WIDTH **49” (124CM)**
VERT REPEAT **1” (3CM)**
HORZ REPEAT **4” (10CM)**
MATCH **Straight**
CONTENTS **61% Wool, 16% Acrylic, 5% Polyamid, 4% Mohair, 4% Alpaca**
COUNTRY **France**
CARE **Dry Cleaning Recommended**
ABRASION **Martindale 35,000**
APPLICATION **Upholstery**



TEXTURES II
FABRICS



SANDSTONE **76410**



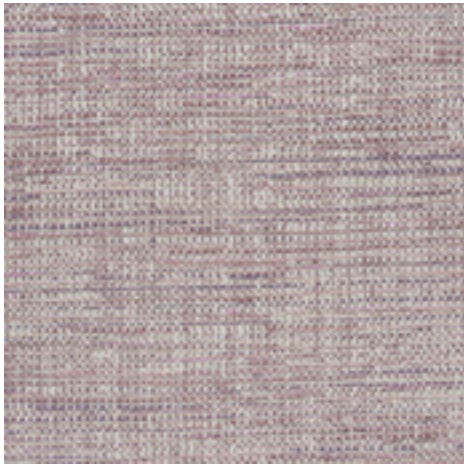
CHARCOAL **76411**



INDIGO **76412**



GRASS **76413**



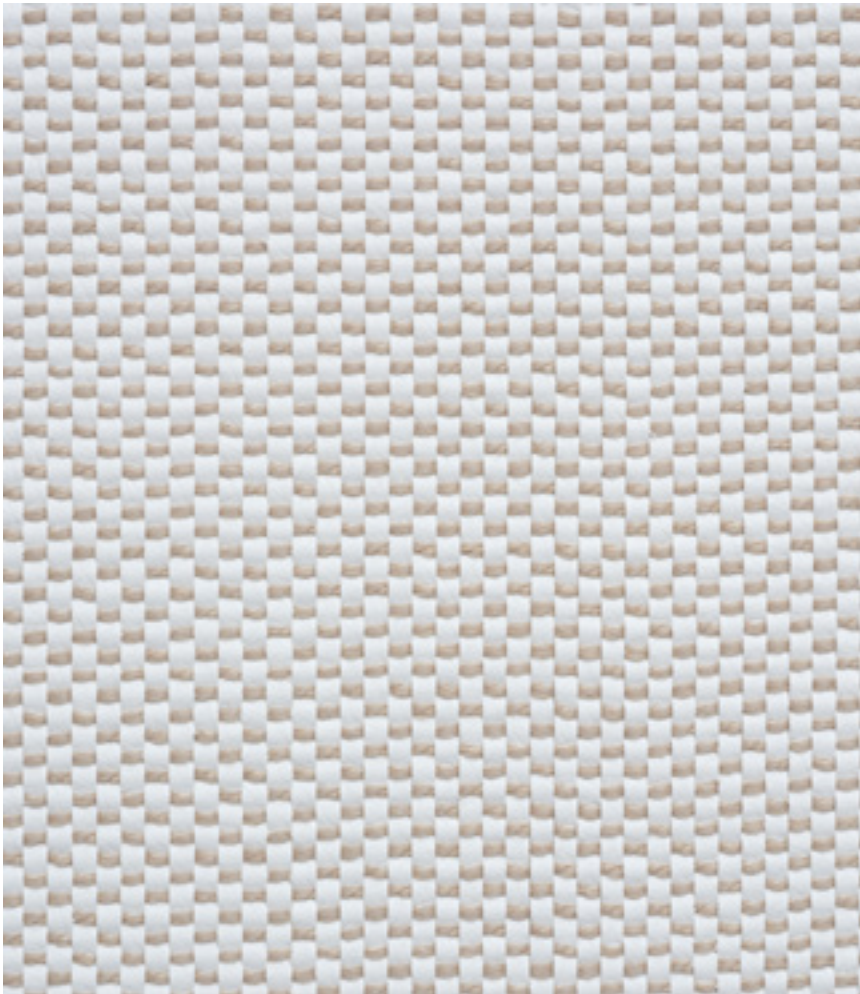
HEATHER **76414**

Auckland

A handsome heavyweight weave of multi-width mélange yarns, Auckland is a versatile upholstery fabric with unique texture, tonal variations and dimension.

WIDTH **55 3/4" (142CM)**
MATCH **Straight**
CONTENTS **46% Acrylic, 34% Polyester, 14% Viscose, 6% Linen**
COUNTRY **Turkey**
CARE **Dry Cleaning Recommended**
ABRASION **Martindale 35,000**
APPLICATION **Upholstery**

TEXTURES II
FABRICS



NATURAL **76420**

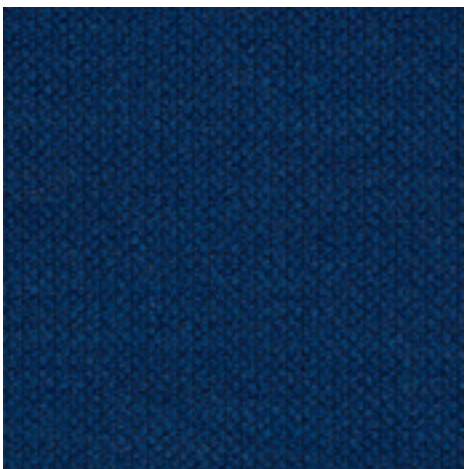
Guthrie

Guthrie is a luxe basketweave of faux leather and cotton-wool yarn that is backed and ready for upholstery applications, from headboards to seat cushions.

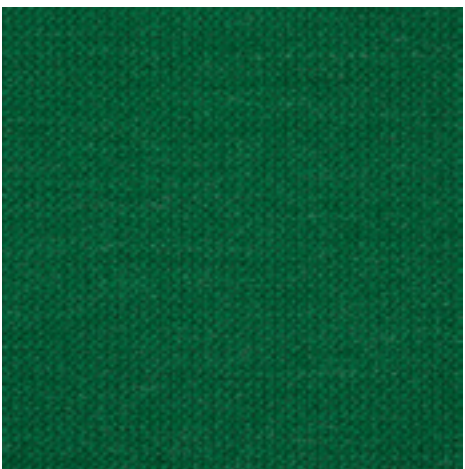
WIDTH **54 1/2" (138CM)**
MATCH **Straight**
CONTENTS **46% Wool, 37% Polyvinyl, 11% Polyester, 5% Cotton, 1% Polyurethane**
COUNTRY **Turkey**
CARE **Dry Clean Only**
APPLICATION **Upholstery**



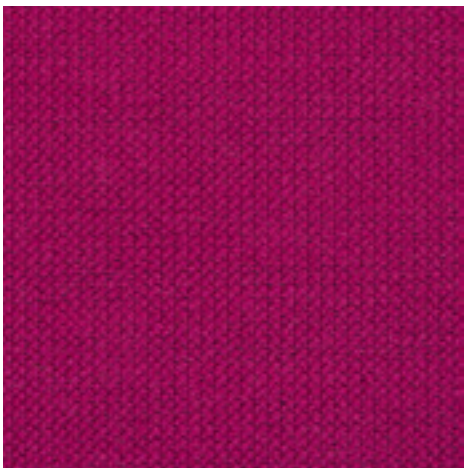
TEXTURES II
FABRICS



BLUE 76451



GREEN 76452



FUCHSIA 76453



GREY 76450

Alpine

Alpine is a stylish solid with a charming hand-knitted look. Available in exquisite colors, it's a deceptively hardwearing weave that's stable enough for upholstery use.

WIDTH **50" (127CM)**
MATCH **Straight**
CONTENTS **45% Cotton, 41% Wool,**
11% Polyester, 3% Nylon
COUNTRY **USA**
CARE **Dry Clean Only**
ABRASION **Martindale 32,000**
APPLICATION **Upholstery**

TEXTURES II
FABRICS



IVORY **76460**



LIGHT GREY **76461**

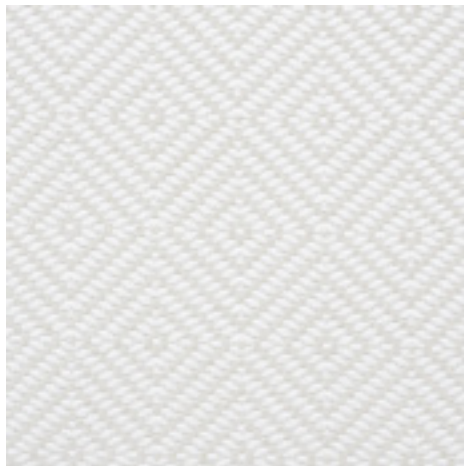
Tundra

A super soft blend of linen, wool and alpaca yarns gives this weave an unbelievably sensual appeal. On pillows or upholstery, it's as cozy as it is cool.

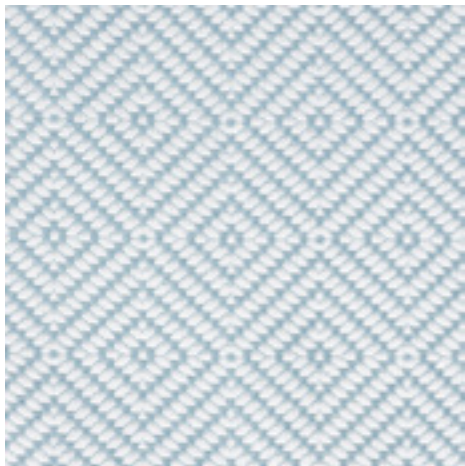
WIDTH **55" (140CM)**
MATCH **Straight**
CONTENTS **42% Alpaca, 19% Wool,
19% Linen, 10% Cotton, 10% Polyamid**
COUNTRY **Italy**
CARE **Dry Clean Only**
ABRASION **Martindale 100,000**
APPLICATION **Upholstery**



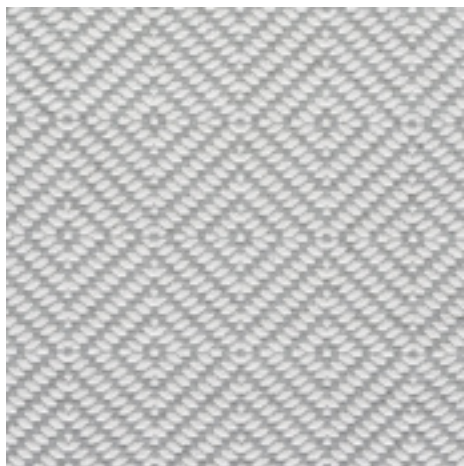
TEXTURES II
FABRICS



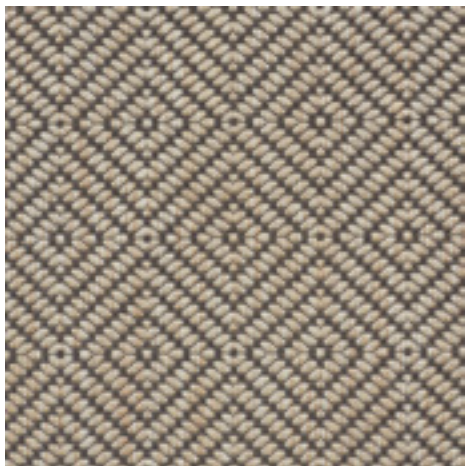
IVORY 76470



SKY 76472



GREY 76471



RAFFIA 76473

Montane

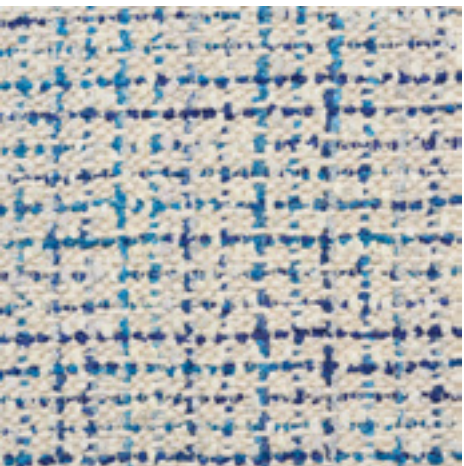
This timeless diamond design is perfect for when a simple solid just won't do. It has remarkable softness that makes it a natural fit for upholstered pieces.

WIDTH **55 1/2" (141CM)**
VERT REPEAT **4" (10CM)**
HORZ REPEAT **3" (8CM)**
MATCH **Straight**
CONTENTS **36% Viscose, 32% Linen, 26% Cotton, 6% Polyester**
COUNTRY **Italy**
CARE **Dry Clean Only**
ABRASION **Martindale 28,000**
APPLICATION **Upholstery**

TEXTURES II
FABRICS



PEACOCK 54236



BLUE 54235



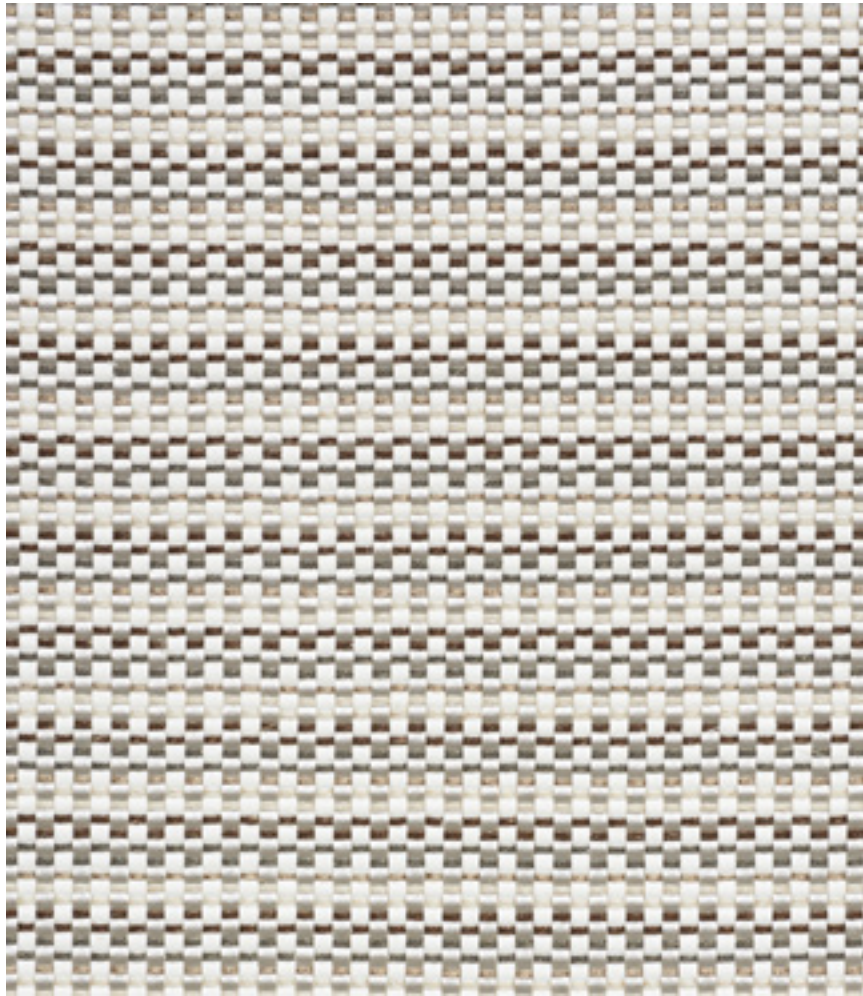
GREY 54234

Babe's Tweed

As chic as a socialite's suit, this fashion-inspired marled tweed is made up of multi-colored, multi-width yarns and silk ribbons for a look that's completely couture.

WIDTH **54" (137CM)**
MATCH **Straight**
CONTENTS **46% Viscose, 28% Silk, 18% Polyester, 8% Cotton**
COUNTRY **India**
CARE **Dry Cleaning Recommended**
APPLICATION **Multipurpose**

TEXTURES II
FABRICS



GREY **76430**

Arlo

Arlo is a handsome basketweave of faux leather and a cotton-wool yarn with tonal variations that create a subtle striped look. It is backed and ready for myriad upholstery uses.

WIDTH **54 1/2" (138CM)**
VERT REPEAT **1" (3CM)**
MATCH **Straight**
CONTENTS **47% Vinyl, 21% Acrylic, 16% Polyester, 8% Cotton, 7% Rayon, 1% Polyurethane**
COUNTRY **Turkey**
CARE **Dry Clean Only**
ABRASION **Martindale 25,000**
APPLICATION **Upholstery**

TEXTURES II
FABRICS



STONE **67134**



FEATHER GREY **67135**



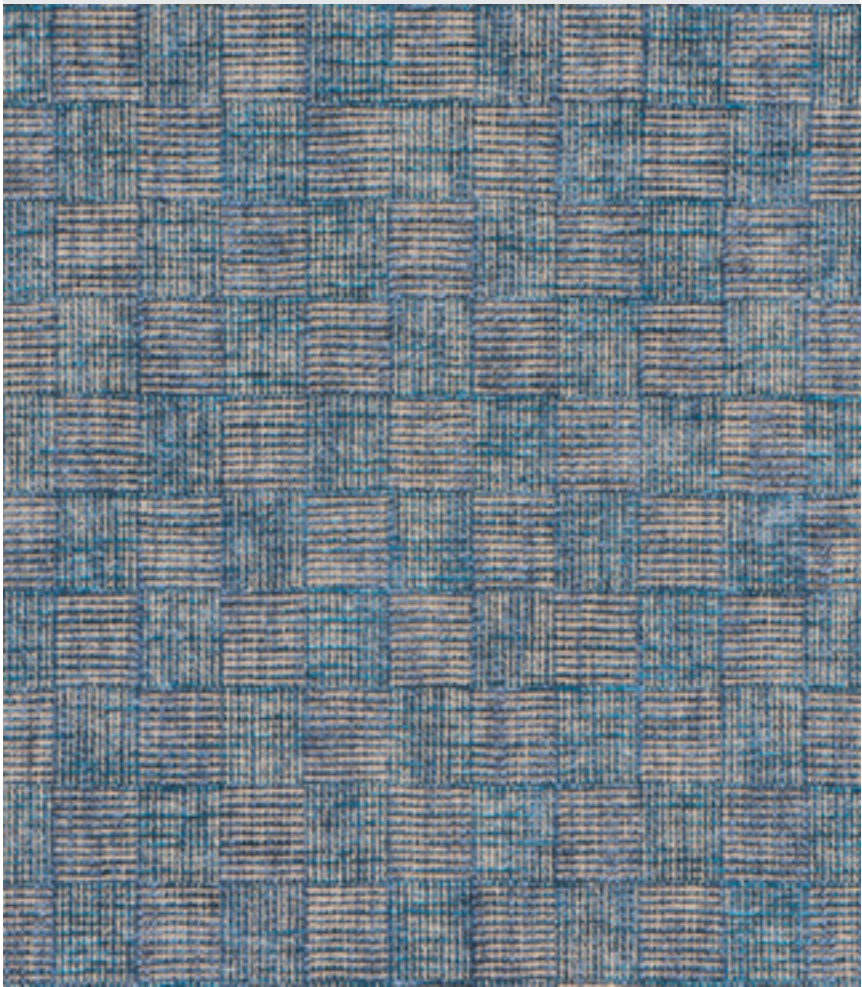
CARBON **67136**

Dixon Mohair Weave

With a brushed and felted finish, this mohair weave has a plush texture and an exceptionally soft hand. It's luxurious yet highly resilient and comes in an earthy, neutral palette.

WIDTH **61" (155CM)**
CONTENTS **45% Wool, 40% Mohair, 15% Polymide**
COUNTRY **Belgium**
CARE **Dry Clean Only**
ABRASION **Martindale 45,000**
APPLICATION **Upholstery**

TEXTURES II
FABRICS



CADET **72480**



STONE **72481**



NATURAL **72482**

Yuma

A beautiful, tonal basketweave, Yuma has depth, nuance and sophistication. Chenille yarns account for its undeniable softness.

WIDTH **56 1/2" (144CM)**
VERT REPEAT **3 1/2" (9CM)**
HORZ REPEAT **3" (8CM)**
CONTENTS **57% Cotton, 43% Viscose**
COUNTRY **Italy**
CARE **Dry Clean Only**
ABRASION **Martindale 40,000**
APPLICATION **Upholstery**

TEXTURES II
FABRICS



CLOUD **73350**

Roscoe

A combination of cotton, wool and mohair fibers, this exquisitely special bouclé is extraordinarily soft, cozy and extremely stylish all at once.

WIDTH **53" (135CM)**
CONTENTS **43% Mohair, 24% Cotton, 22% Wool, 11% Polyacrylic**
COUNTRY **Belgium**
CARE **Dry Clean Only**
APPLICATION **Decorative**

TEXTURES II
FABRICS



DOVE **73370**



STONE **73371**



INDIGO **73372**



CHARCOAL **73373**

Morrow

A random mix of tonal yarns gives Morrow its gorgeous dimension and tweedy effect.

WIDTH **53 1/2" (136CM)**
CONTENTS **57% Acrylic,**
26% Polyester, 17% Cotton
COUNTRY **Turkey**
CARE **Dry Cleaning Recommended**
ABRASION **Wyzenbeek 30,000**
APPLICATION **Upholstery**

TEXTURES II
FABRICS



CREAM **73380**



NATURAL **73381**



DOVE **73382**

Artisanal Boucle

Random slubs give this dense cotton-blend bouclé a unique handwoven look. This is an elevated basic with more interest than a plain.

WIDTH **55" (140CM)**
CONTENTS **52% Cotton,**
30% Viscose, 18% Polyester
COUNTRY **Italy**
CARE **Dry Clean Only**
ABRASION **Martindale 26,000**
FLAMMABILITY **Cal. Tb#117 Sec. E**
APPLICATION **Upholstery**

TEXTURES II
FABRICS



CREAM **73390**



DOVE **73391**



MINERAL **73392**

Albers Weave

Sexy and surprisingly durable, Albers Weave is a soft, irregular, offset stripe with a handwoven look. A mix of yarns co-mingle to create a slight, seductive shimmer.

WIDTH **55" (140CM)**
CONTENTS **40% Viscose, 30% Cotton, 20% Linen, 6% Polyacrylic, 4% Polyester**
COUNTRY **Italy**
CARE **Dry Clean Only**
ABRASION **Martindale 26,000**
FLAMMABILITY **Cal. Tb#117 Sec. E**
APPLICATION **Upholstery**

TEXTURES II
FABRICS



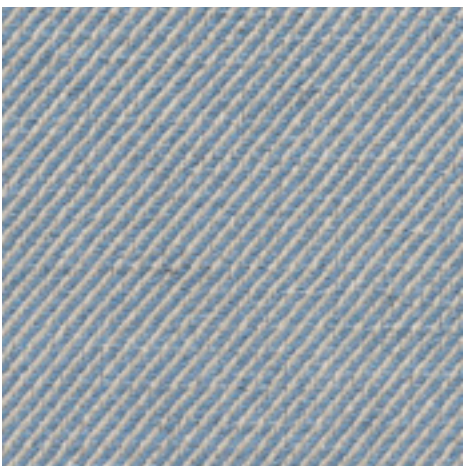
NATURAL **73540**



BLUSH **73541**



SLATE **73542**



DENIM **73543**

Hurston

A soft linen blend with a beautiful hand, Hurston is a tight, tonal bias stripe and a nuanced alternative to a plain solid.

WIDTH **55" (140CM)**
CONTENTS **70% Linen, 22% Cotton, 8% Viscose**
COUNTRY **Italy**
CARE **Dry Cleaning Recommended**
ABRASION **Martindale 40,000**
APPLICATION **Upholstery**