

# COLETTE COSENTINO



The moment we encountered the magically dream-like paintings of Santa Barbara-based artist Colette Cosentino, we knew they could become immersive, imaginative wallcoverings. Swath a room in these digitally-printed tone-on-tone panels and it's like stepping into a half-remembered recollection of a landscape, transporting and graceful and utterly captivating in equal measure.



SHOWN IN BISOU  
TIN 5010931

# BISOU

TIN 5010931

(WIDTH: 230"; VERT. REPEAT: 143 7/8"; HORZ. REPEAT: 216")



MINERAL 5010930

(WIDTH: 230"; VERT. REPEAT: 143 7/8"; HORZ. REPEAT: 216")



# BISOU

*GOLD 5010932*

(WIDTH: 230"; VERT. REPEAT: 143 7/8"; HORZ. REPEAT: 216")





SHOWN IN BRINDILLE  
GOLD ACCENTED PANEL  
DOVE 5010920

# BRINDILLE GOLD ACCENTED PANEL

*DOVE 5010920*

(WIDTH: 230"; VERT. REPEAT: 143 2/3"; HORZ. REPEAT: 216")



*CARBON 5010921*

(WIDTH: 230"; VERT. REPEAT: 143 2/3"; HORZ. REPEAT: 216")



# BRINDILLE GOLD ACCENTED PANEL

*PEACOCK 5010922*

(WIDTH: 230"; VERT. REPEAT: 143 2/3"; HORZ. REPEAT: 216")





SHOWN IN CHATOYANT  
BLUSH 5010890



# CHATOYANT

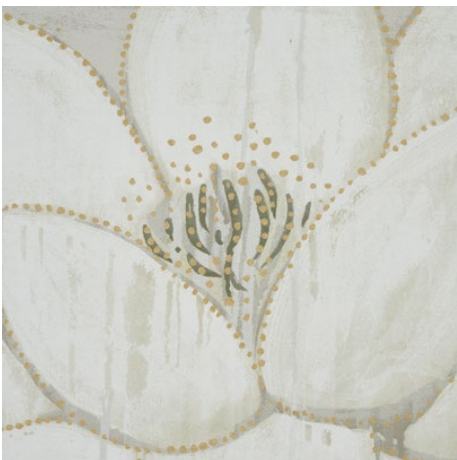
*BLUSH 5010890*

(WIDTH: 345"; VERT. REPEAT: 144"; HORZ. REPEAT: 324")



*LEAF 5010891*

(WIDTH: 345"; VERT. REPEAT: 144"; HORZ. REPEAT: 324")





SHOWN IN SIRENE  
OPAL 5010901

# SIRENE

*OPAL 5010901*

(WIDTH: 345"; VERT. REPEAT: 144"; HORZ. REPEAT: 324")



*DUSK 5010900*

(WIDTH: 345"; VERT. REPEAT: 144"; HORZ. REPEAT: 324")

