

# Qi Wireless Charging Pad with Rapid Charge Technology

## SC-6020QI

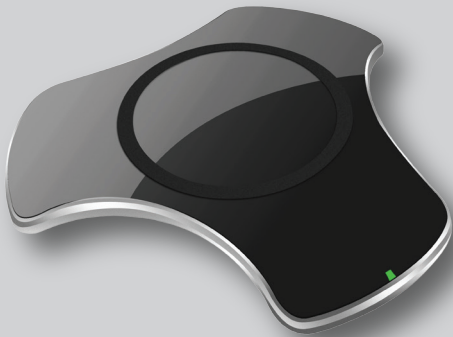


 **Rapid Charge**

**Power Output:  
5W/10W**



Different view



### PRODUCT DETAILS:

Black Unit UPC: 639131260207  
Black Inner Case UPC: 20639131260201  
Black Master UPC: 10639131260204

Silver Unit UPC: 639131760202  
Silver Inner Case UPC: 20639131760206  
Silver Master UPC: 10639131760209

Unit Dimensions (in): 7.13 x 0.67 x 9.21  
Unit Weight (lbs): 0.47

Giftbox Dimensions (in): 7.13 x 0.67 x 8.11  
Giftbox Weight (lbs): 0.55

Inner Case Dimensions (in): 9.4 x 7.6 x 10.2  
Inner Case Weight (lbs): 5.16  
Inner Case QTY: 10

Master Case Dimensions (in): 15.9 x 9.8 x 11.0  
Master Case Weight (lbs): 11.58  
Master Case QTY: 20

Features and specifications, measurements and weight may be subject to change without prior notice

### FEATURES & SPECIFICATIONS:

#### QI™ COMPATIBILITY

Qi is a wireless technology that uses inductive charging. The Wireless Charging Pad has been engineered to be Qi compatible, allowing it to also charge phones, tablets and other accessories with Qi technology.

#### CASE COMPATIBILITY

Charge without removing your case. The Wireless Charging Pad is engineered to work with most lightweight plastic cases up to 3mm (not compatible with metal cases).

- Super Compact in Size, Lightweight & Portable
- Simply Place Your Phone on the Charging Pad & Charge
- Support Qi-Enabled Devices and Accessories Including iPhone X/iPhone 8/iPhone 8 Plus; Samsung Galaxy S9, S9+, S8, S8+, S7, S7 Edge, Note 8, Note 5, S6, S6 Edge; Nexus 5, etc.
- LED Indicates the Charging Status
- Input: 5V-2A/9V-2A Micro USB Port
- Output: 5W/10W (fast charging)
- Sensing Distance: 5mm
- Wireless Charging Area: 10mm x 10mm
- Frequency: 110K-148KHz
- USB Cable to Charge the Pad



**Accessories:** USB Charging Cable and User manual

