

PRODUCT INFORMATION

- High Brightness
- Dimmable
- Thickness: 14mm
- Damp location
- Working temperature -20° ~ +40°
- Smooth and uniform Lightning



APPLICATION

- Offices • Hotels • Municipal • Hospitals & Clinics
- Commercial • Assisted Living • Retail • Facilities
- Schools & Universities

SPECIFICATION

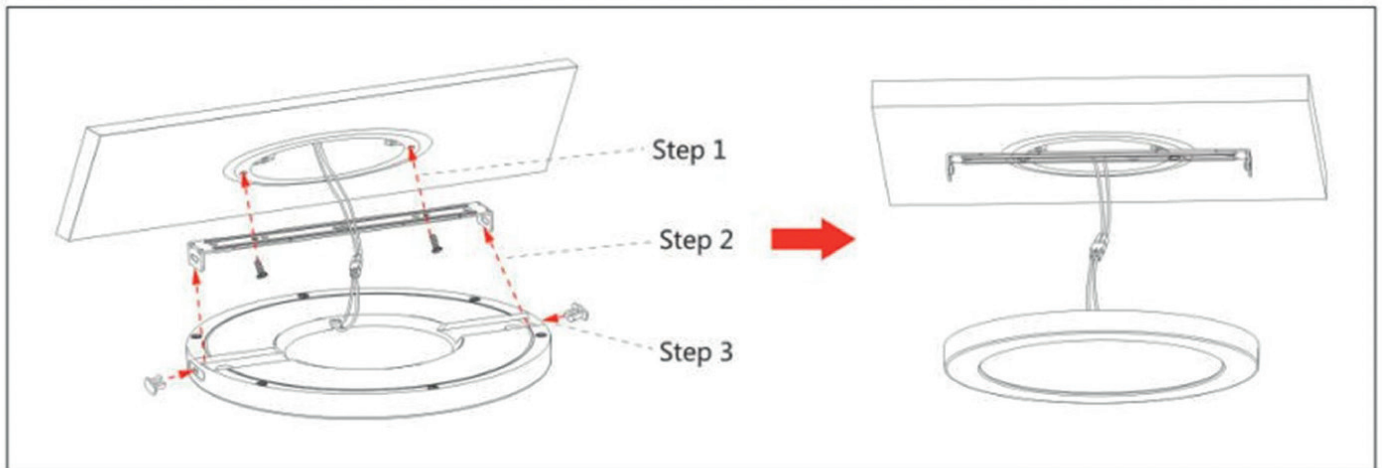
ITEM No	Voltage (V)	Watt (W)	Lighting Color	CCT	Dimmable	Certificates
GDL-1105S	120V	6W	Warm White	3000K	YES	ETL/ES
GDL-1107S		12W	Natural White	4000K		ETL/ES
GDL-1109S		18W	Cool White	5000K		ETL/ES
GDL-1112S		24W	Changing colors	3CCT		ETL/ES

PARAMETERS

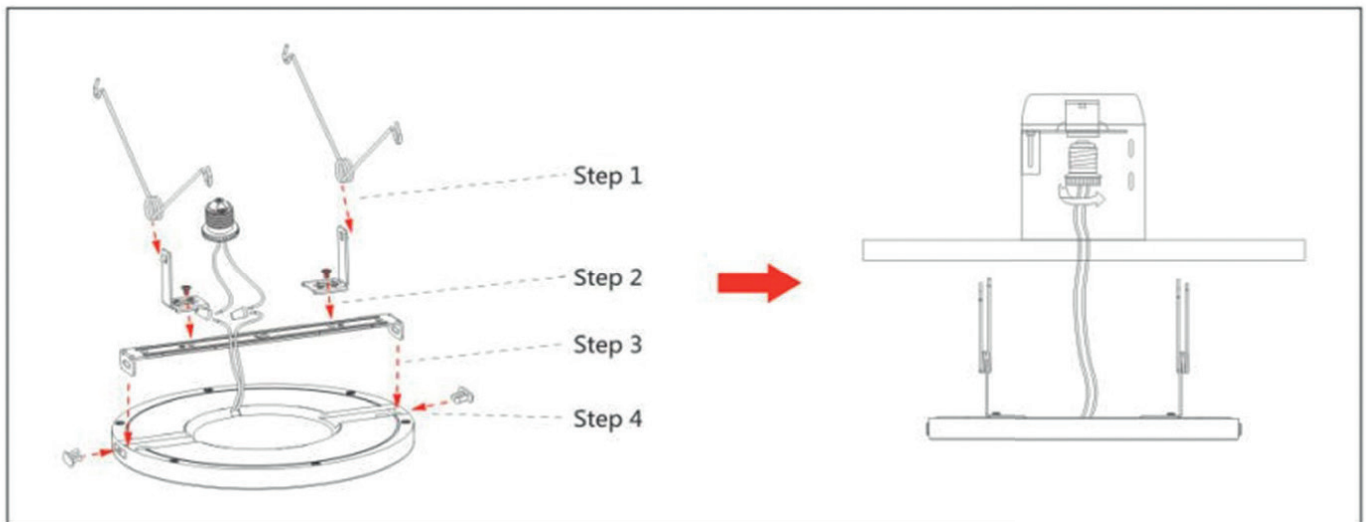
Electrical Characteristics		Optical Characteristics	
Input Voltage	120V AC 50~60Hz	LED Type	SMD2835
Rated Power	9W	Brand of LED Chip	48pcs Taiwan Epistar
Replacement	9W=80W Halogen	Lumen	750lm
Installation of LED Driver	External	Life Span Based on 3hrs/day	45 years
Type of LED Driver	Constant current output	CRI	>80
Power Factor	0.95 ~0.98	Beam Angle	180 degree
Operating Temperature	-10°C-40°C	CCT	3CCT (3000k-4000k-5000k) & single CCT



INSTALLATION INSTRUCTION



Retrofit Mount:



Warning:

Please use the product within the specified range of voltage.

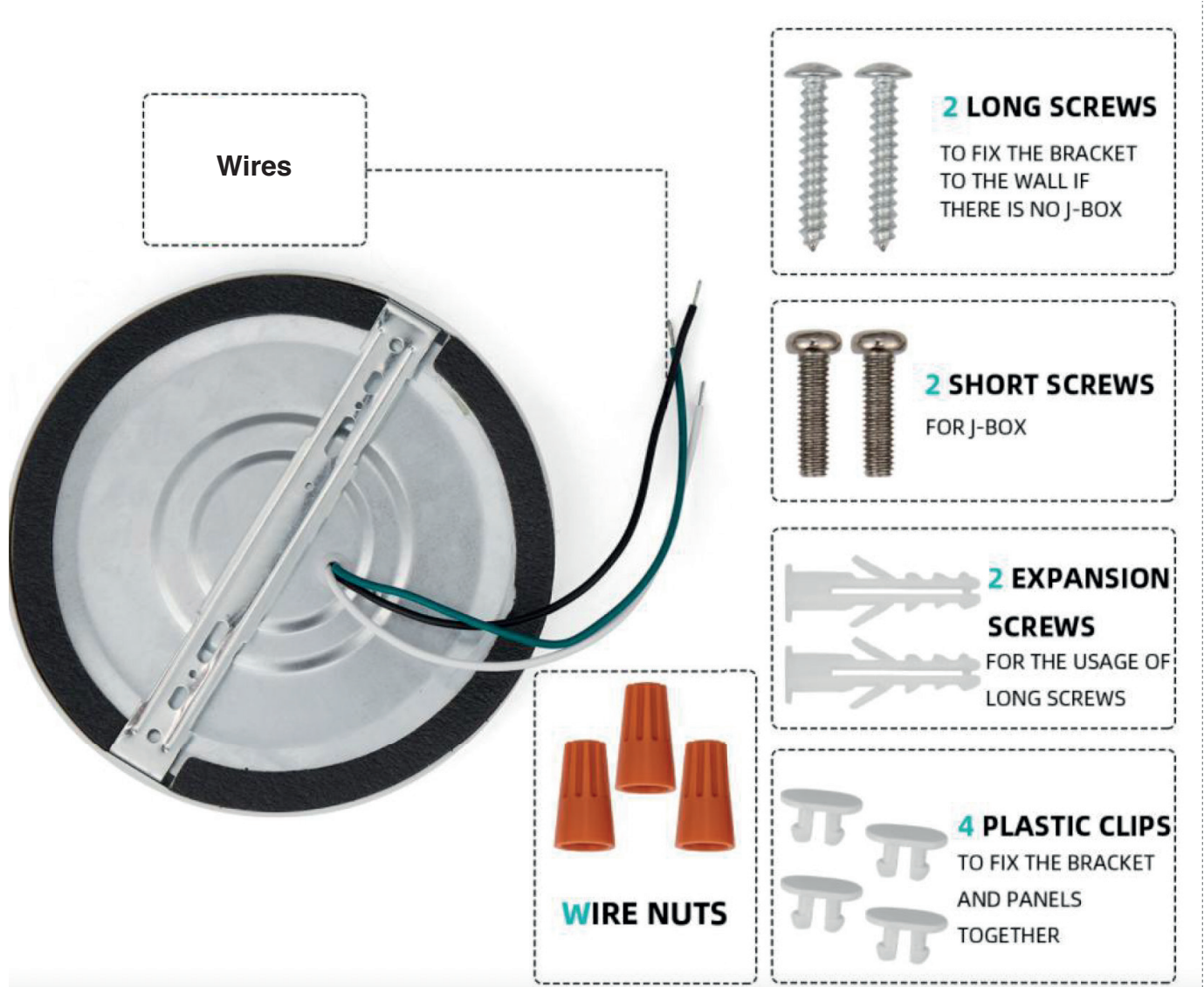
Please follow the correct installation steps to install the product, and do not touch when it is working. Please turn power off when installing and removing the products to avoid risk of electric shock. Do not look directly at LED light source for a long time.

SPECS

Indoor/Outdoor:	Indoor
Fixture Type:	Ceiling Mount
Application:	Damp Location and Dry Location
Technology:	LED
Product Demension	5" / 7" / 9" / 12"
Total Input Power (Watts):	6W/ 12W / 18W / 24W
Total Light Output (lumens)	500lm / 1000lm/ 1440lm / 1950lm
Appearance/Correlated Color Temperature (K):	2700K/ 3000k/ 4000K/5000K/6000K
Light Sources Per Fixture:	Sanan LED Chip
Color Quality (CRI):	83
Power Factor:	>0.90
Light Source Life (hrs):	30000
Special Features:	Continuously Dimmable, No Dark Spot
Installation:	Junction box / Housing
Markets:	United States, Canada

Notice:

1. Cutting off the electricity before installation.
2. Installation can only be done by qualified electrician.
3. Input voltage is AC120V 50/60Hz. Please kindly confirm the voltage before installation.
4. If the down lights can't work normally, please contact our customer service.
5. It will be out of warranty if damage is caused by personal mistake.



Warranty:

5 years warranty from the shipping date; We will replace all the failed products due to YG design/production quality during warranty period; We will bear all cost of maintains if the customer can help us to repair locally; We don't have the responsibility to compensate for any incorrect installation or artificial damage; We don't have the responsibility to compensate for damage occurred during the transit.