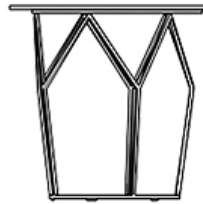
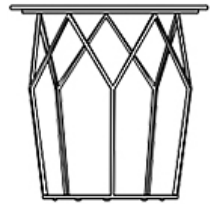
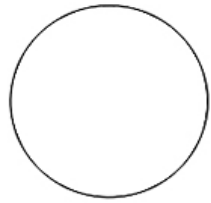

Ria

Coffee Table



By using it near your sofas and near your headboards, Ria Side Table, which allows you to create both a stylish appearance and functionality, brings elegance to your house with its luxurious details!

Technical Drawing



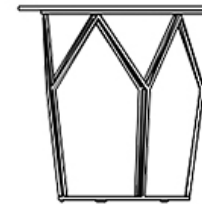
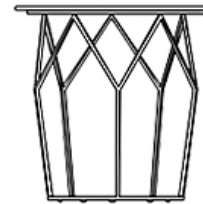
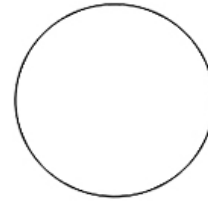
SHP525 *RIA*

**CAM / SERAMİK / MERMER
GLASS / CERAMIC / MARBLE**

E: 52 cm
L: 20,5 inch

D: 52 cm
D: 20,5 inch

Y: 52 cm
H: 20,5 inch



SHP025 *RIA*

**AHŞAP / LAKE
WOOD / LACQUER**

E: 52 cm
L: 20,5 inch

D: 52 cm
D: 20,5 inch

Y: 52 cm
H: 20,5 inch

Technical Information

Top Finishes

SHP025

Natural wood and lacquer options

Lacquer painted material on laminated particle boards or medium-density fiberboards (MDF) are used in the tables of the coffee tables.

SHP525

20 mm Marble;

It is a semi-precious stone material used in the upper table of the coffee table and adds a vivid and luxurious appearance to the product with its veiny patterns.

12 mm Ceramic - 4mm Glass

It is the 1st class durable ceramic material which is laminated with ceramic glass and has a marble look. Perlaglass and Sahara Noir tempered glass is a 1st class durable glass material which is resistant to physical impacts with semi-precious stone look.

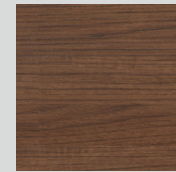
Legs

Legs of the coffee table are made of 10x10mm sheet iron material. It is painted with powder paint and then oven-dried in 210°C degrees. Legs of the table are gofrato painted which has a grainy structure.

Top Finishes

SHP025

Wood and Lacquer Options



Walnut

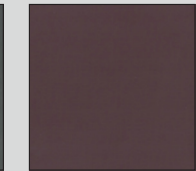
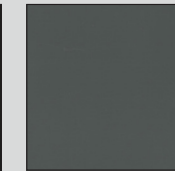
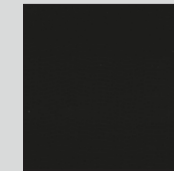
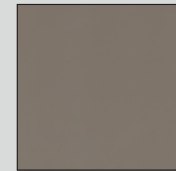
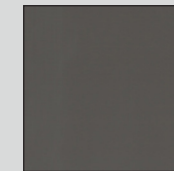
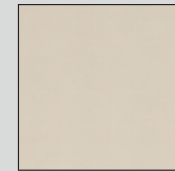
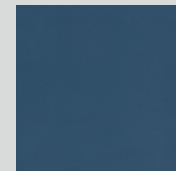


Smoke



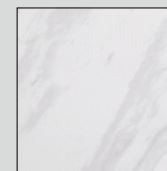
Maple

All Lacquer Options

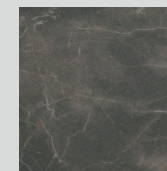


SHP525

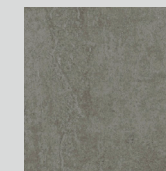
Glass and Ceramic



Sandro

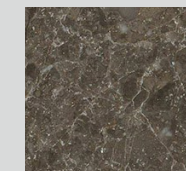


Perla

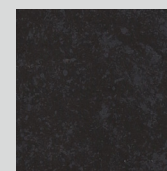


Mica Grey

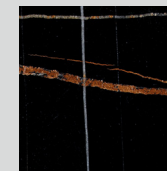
Marble



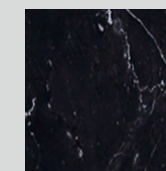
Savana Grey



Mica Blue

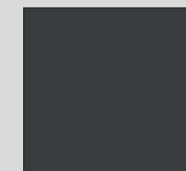


Sahara
Noir



Perlaglass

Legs



Gofrato