

---

# Pure

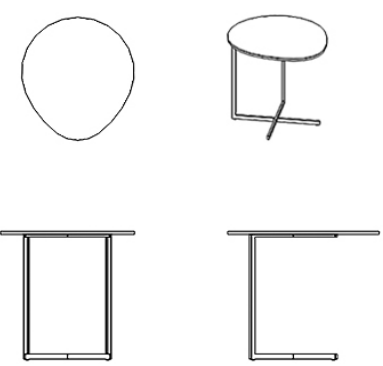
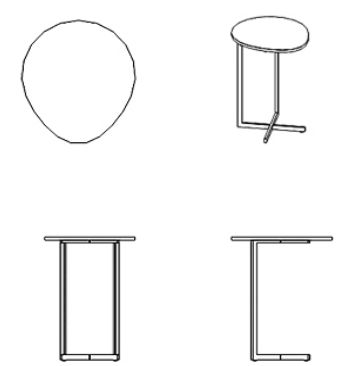
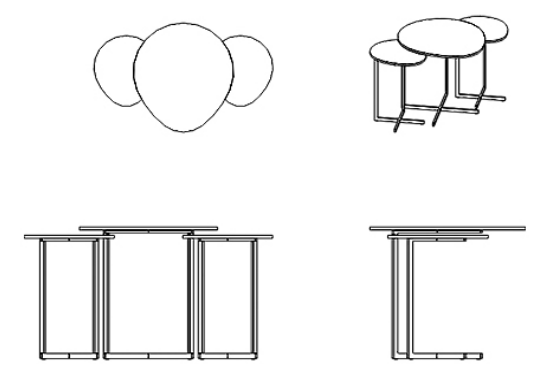
Coffee Table



Pure Nesting Table allows you to catch the modern style by trying new variations through merging high and low options together.

---

# Technical Drawing

								
<b>SHP390 PURE</b>			<b>SHP391 PURE</b>			<b>SHP392 PURE SET</b>		
<b>AHŞAP / LAKE WOOD / LACQUER</b>			<b>AHŞAP / LAKE WOOD / LACQUER</b>			<b>AHŞAP / LAKE WOOD / LACQUER</b>		
<b>E:</b> 56 cm	<b>D:</b> 50 cm	<b>Y:</b> 49 cm	<b>E:</b> 36 cm	<b>D:</b> 32 cm	<b>Y:</b> 46 cm	<b>E:</b> 93 cm	<b>D:</b> 56 cm	<b>Y:</b> 49 cm
<b>L:</b> 22,0 inch	<b>D:</b> 19,7 inch	<b>H:</b> 19,3 inch	<b>L:</b> 14,2 inch	<b>D:</b> 12,6 inch	<b>H:</b> 18,1 inch	<b>L:</b> 36,6 inch	<b>D:</b> 22,0 inch	<b>H:</b> 19,3 inch

# Technical Information

## Top Finishes

### *Natural wood and lacquer options*

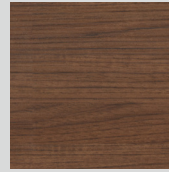
Lacquer painted material on laminated particle boards or medium-density fiberboards (MDF) are used in the tables of the coffee tables.

## Legs

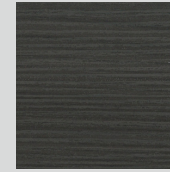
Legs of the coffee table are made of 10x10mm sheet iron material. It is painted with powder paint and then oven-dried in 210C degrees. Legs of the table are gofrato painted which has a grainy structure.

## Top Finishes

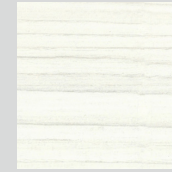
### Wood and Lacquer Options



Walnut

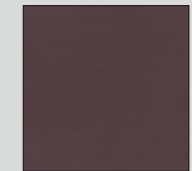
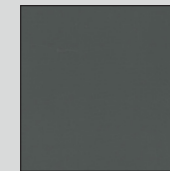
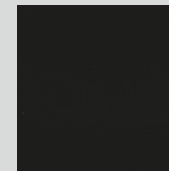
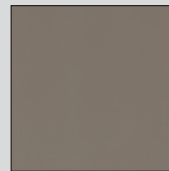
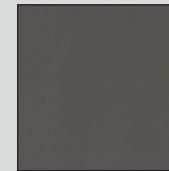
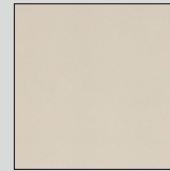
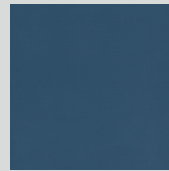


Smoke

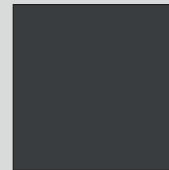


Maple

### All Lacquer Options



## Legs



Gofrato