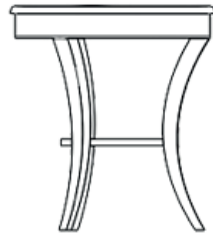
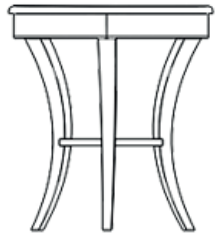

Londo

Coffee Table



As standing elegant with its classic style, Londo Side Table makes it possible to use small and narrow spaces efficiently!

Technical Drawing



SHPN25 *LONDO*

LAKE
LACQUER

E: 53 cm

D: 53 cm

Y: 57 cm

L: 20,9 inch

D: 20,9 inch

H: 22,4 inch

Technical Information

Top Finishes

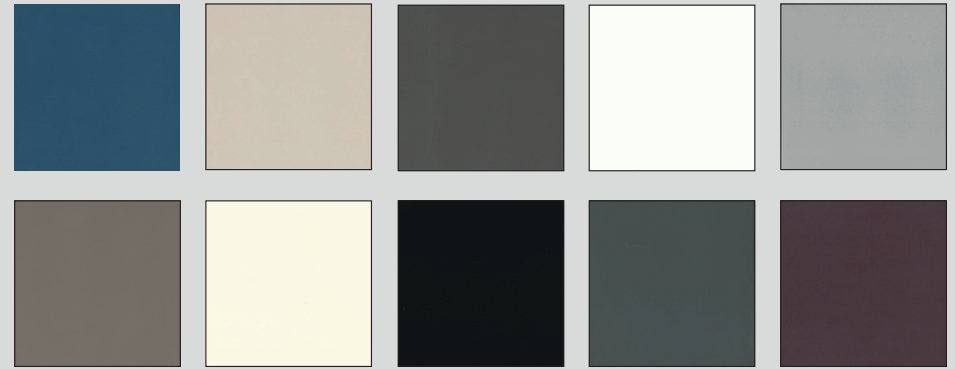
The coffee table is manufactured of lacquer painted material on medium-density fiberboard (MDF).

Legs

The legs are manufactured of lacquer painted material on medium-density fiberboard (MDF).

Top Finishes

All Lacquer Options



Legs

All Lacquer Options

