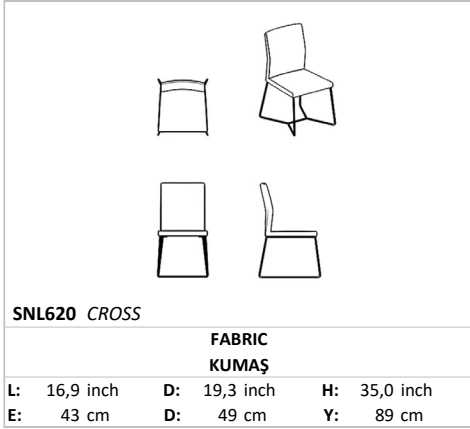

CROSS

Chair



Through its delicate and linear leg structure, which provides the opportunity of preserving its unique style and makes the product distinguishable, Cross Chair shows the most elegant stance whether in your dining room or living space.

Technical Drawing



Technical Information

SITTING

It is manufactured from polyurethane filling exclusive for Lazzoni.

LEGS

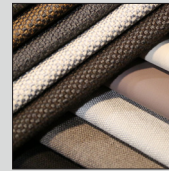
Metal legs

FABRIC

All fabric options are available.

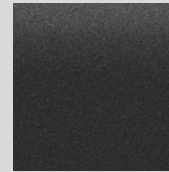
FABRIC

All Fabric Options



LEGS

Metal



Gofrato



Gloss Black