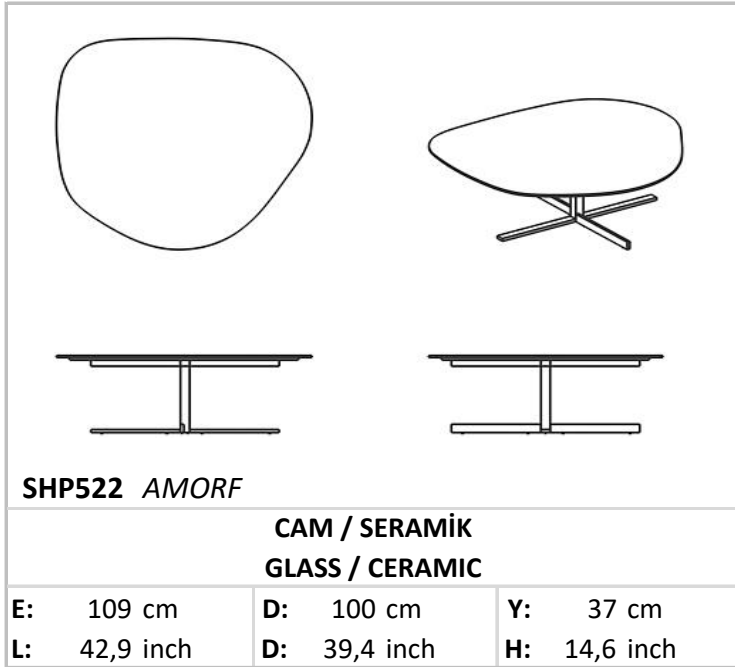

Amorf

Coffee Table



Amorf Coffee Table shows the design style of the modern world with its decorative and variable texture!

Technical Drawing



Technical Information

Top Finishes

11 mm Ceramic - 4mm Glass

It is the 1st class durable ceramic material which is laminated with ceramic glass and has a marble look.

Perlaglass and Sahara Noir tempered glass is a 1st class durable glass material which is resistant to physical impacts with semi-precious stone look.

Legs

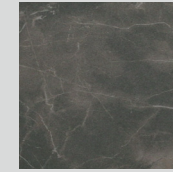
Legs of the coffee table are made of 10x10mm sheet iron material. It is painted with powder paint and then oven-dried in 210°C degrees. Legs of the table are gofrato painted which has a grainy structure.

Top Finishes

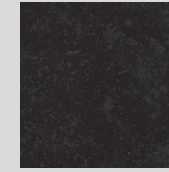
Glass and Ceramic



Sandro



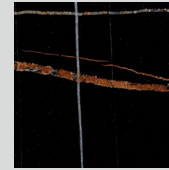
Perla



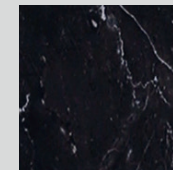
Mica Blue



Mica Grey

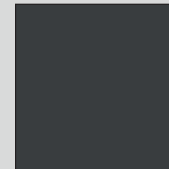


Sahara
Noir



Perlaglass

Legs



Gofrato