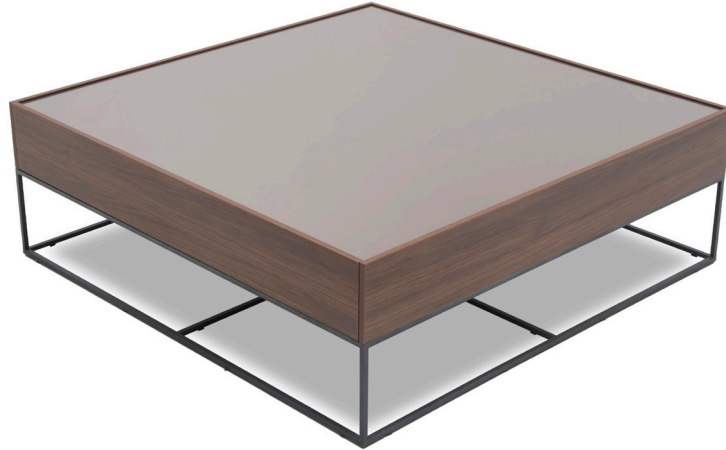
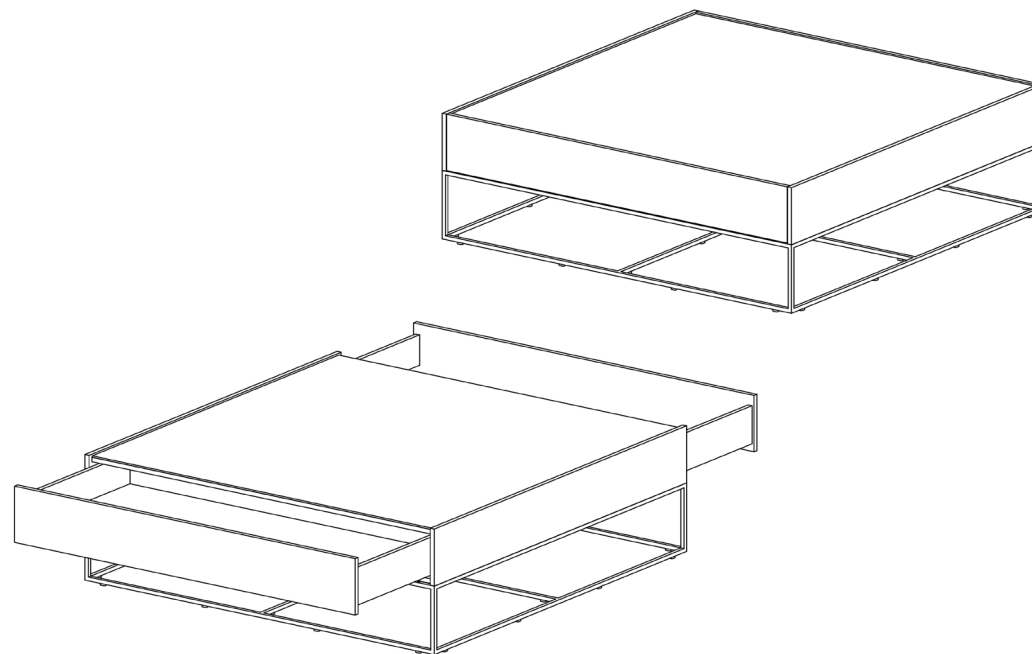
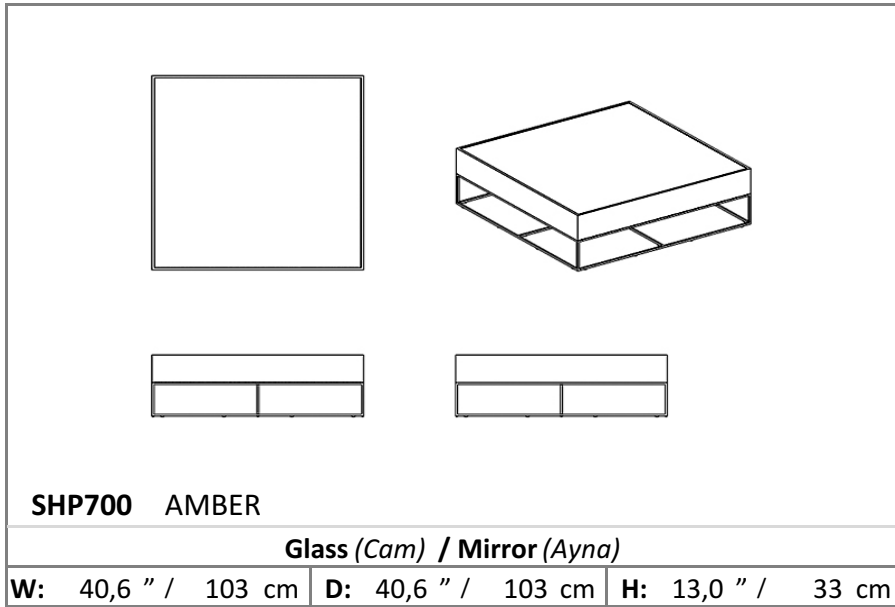

AMBER

Coffee Table



As its linear leg structure making the product distinctive, its large drawers providing extra storage area maximize the functionality!

Technical Drawing



Technical Information

Top Finishes

4 mm Perlaglass, Sahara Noir, Glass and Mirror;

- Perlaglass tempered glass and Sahara Noir are 1st class durable glass materials which are resistant to physical impacts with semi-precious stone look.
- Chic looking and durable mirror is used.

Body

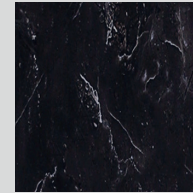
Laminated particle board is used in the body of the coffee table.

Legs

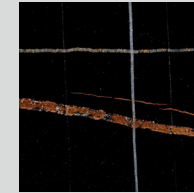
Legs of the coffee table are made of 10x10mm sheet iron material. It is painted with powder paint and then oven-dried in 210C degrees. Legs of the table are gofrato painted which has a grainy structure.

Top Finishes

Perlaglass, Sahara Noir, Glass and Mirror



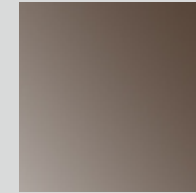
Perlaglass



Sahara Noir



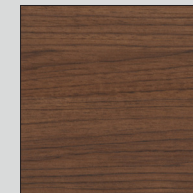
Smoke Mirror



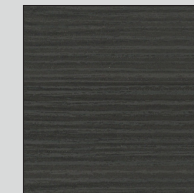
Bronze Mirror

Body

Wood Options



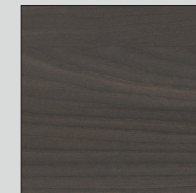
Walnut



Smoke

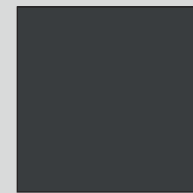


Maple



Freze Mocha

Legs



Gofrato