



NEW PRODUCTS 2019



ANCOR

BEP

BLUE SEA[®]
SYSTEMS

C20B[®]

LENCO

MARINCO

MASTERVOLT

ProMariner[™]



MARINE GRADE® TAN WIRE

Same great wire, now in a new color! With this addition, Ancor now offers all ABYC recommended solid colors of wire. ABYC recommends for water temp gauges.



TRAILER CABLE

Molded trailer connector made in accordance with SAE color coding. Individual ends and loops in an assortment of wire lengths for all applications.



4" & 6" SELF-CUTTING CABLE TIES

Ancor has expanded our full line of Self-cutting cable ties with the addition of 4" and 6" sizes. Simply lock and twist to finish the job, with no need for additional tools! This leaves a clean cut, which improves appearance and eliminates the sharp tail.



MINI FISH TAPE

45 m (15 ft) low-memory tape makes this product ideal for non-conduit situations in a marine environment. Use for short electrical runs, installing speakers, instrument clusters or other marine uses.

Product code **703112**



DOUBLE CONTACT BAYONET BULB SOCKETS

Sockets for 12 V miniature bayonet base lamps. Spring-loaded brass contacts. Available with screw contacts or 8" wire leads.

Product code A **529310**

Product code B **529311**



NMEA 2000 POWER ISOLATOR

Used for isolating power between two independent NMEA 2000 networks. Reduce battery current draw by powering one bus off while the other remains operational, or can be used to assist with voltage drop issues on long networks.

Product code **270113**



HEAT SHRINK MULTI-WIRE CONNECTORS KIT

Reusable jar is clear for easy identification of the connectors and has a flip lid for ease of use.

Product code **320000**



WIRE MANAGEMENT KITS

New kits to provide everything needed for a wiring project.

- Product code **320101** 160 pc HS connectors & terminals kit
- Product code **250101** 440 pc nylon connectors & terminals kit
- Product code **255101** 100 pc tinned copper lug kit
- Product code **330101** 47 pc adhesive lined heat shrink tubing kit

EXPANDING OFFERING



500 PACK 8 AWG BUTT CONNECTORS

Larger pack size for large usage.

Product code **309302**



ADHESIVE LINED HEAT SHRINK TUBING (ALT)

Ancor now offers an expanded consistent line.



REFRESHED MERCHANDISING DISPLAYS

Updated product assortments.



CONTURA SWITCHES

Shock and weather resistant switches are designed for use in harsh marine environments. Compatible with 12 V and 24 V systems, and rated for up to 20 A (12 V).



ROCKER SWITCHES

Shock and weather resistant switches are designed for use in harsh marine environments. 10 A, 20 A, and 25 A (12 V) options are available.



CONTACT SWITCHES

Universal applications for marine and industrial usage. Available in red or black actuator styles.



TOGGLE SWITCHES

Shock and weather resistant switches are designed for use in harsh marine environments. Available in standard or illuminated actuators.



PUSH BUTTON SWITCHES

Available in several weather resistant designs to suit any application. Suitable for 6-36 V systems with up to 35 A ratings (12 V).



PUSH-PULL SWITCHES

Designed to actuate a variety of single or multiple circuit lighting applications. Suitable for 6-36 V systems with up to 10 A ratings (12 V).



PULL SWITCH

Designed to actuate a variety of single or multiple circuit lighting applications. Suitable for 6-36 V systems with up to 10 A ratings (12 V).



IGNITION SWITCHES

Available in a variety of OFF/ON/Accessory configurations to suit specific applications.



ALARM SWITCHES

For use with temperature, oil pressure, and engine warning alarm kits. A convenient way to add alarm functionality to your dash.



MASTER DISCONNECT

The compact, lever-operated battery disconnect switch is rated for 175 A for use in 12 V DC systems.



DIMMER SWITCHES

Control the brightness of incandescent bulbs. Not intended for LED lights.



KILL SWITCHES

Ideal for adding engine-stop safety to older boats.



LED PILOT INDICATOR

Features bright, chrome-plated body, washer, and hex nut. Available in Amber, Red, Green, and Blue.



SOLENOIDS

Remotely switch high amperage loads with low amperage switches. Rated from 65 A to 100 A for use in 12 V DC systems.



A



B

SURE EJECT™ PIGTAILS

For emergency vehicle use. A secondary method of disconnecting from shore power for added reliability.

Product code A **7830-BSS / 7831-BSS**

Product code B **7832-BSS / 7833-BSS**



M2 OLED VESSEL SYSTEMS MONITOR (VSM)

Bright, waterproof, daylight readable OLED display. Monitors up to four critical boat systems (AC, DC, Bilge and Tank) in one M2 OLED digital monitor. NMEA 2000 & CZone compatible.

Product code **1850-BSS**



M2 OLED BILGE MONITOR

Bright, waterproof, daylight readable OLED display. Indicates if a bilge pump is on, how long it has run in the last hour, and cycle count in the last 24 hours. Provides an average cycle count over a typical 24 hour period for quick indication of a potential problem.

Product code **1842-BSS**



C-SERIES UL-489 CIRCUIT BREAKERS

Expanded line of circuit breakers that meet CFR 46 / Coast Guard requirements.

Product code **7440-BSS to 7446-BSS** DC Single Pole

Product code **7454-BSS to 7459-BSS** AC Single Pole

Product code **7461-BSS to 7467-BSS** AC Double Pole



A

B

C

WATER-RESISTANT CIRCUIT BREAKER SWITCH PANELS

Designed for exposed mounting applications. Four and six position panels.

Product code A **4320-BSS**

Product code B **4321-BSS**

Product code C **4322-BSS**

10 A



20 A



LED RING PUSH BUTTON SWITCHES

Contemporary and compact switching with integrated ON indication.

Product code A	4160-BSS OFF - ON	4161-BSS OFF - (ON)
Product code B	4162-BSS OFF - ON	4163-BSS OFF - (ON)
Product code C	4190-BSS OFF - ON	() = Momentary
Product code D	4192-BSS OFF - ON	

15 A



OFF - Blue LED

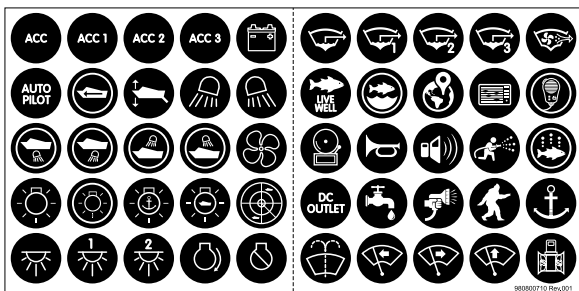
ON - Red LED

BACKLIT PUSH BUTTON SWITCHES

Contemporary and compact 15 A switching with integrated ON indication, labeling, and backlighting.

Product code	4180-BSS OFF - ON	4181-BSS OFF - (ON)
--------------	--------------------------	----------------------------

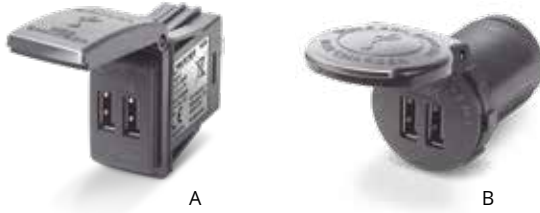
() = Momentary



BACKLIT PUSH BUTTON SWITCH LABEL KIT

50 Waterproof, scratch resistant, icon labels for use with Backlit Push Button Switches.

Product code	4230
--------------	-------------



48 V DC DUAL USB CHARGERS

Intelligent device recognition maximizes charge rate for phones, tablets, or other mobile devices. Includes new spring-hinged lid.

Product code A	1038-BSS Switch Mount
Product code A	1046-BSS Socket Mount



WATER-RESISTANT USB ACCESSORY PANELS

12 V charging and monitoring. Integrated 15 A circuit breaker with a silicon water-resistant boot and gasket. Includes pre-wired harness.

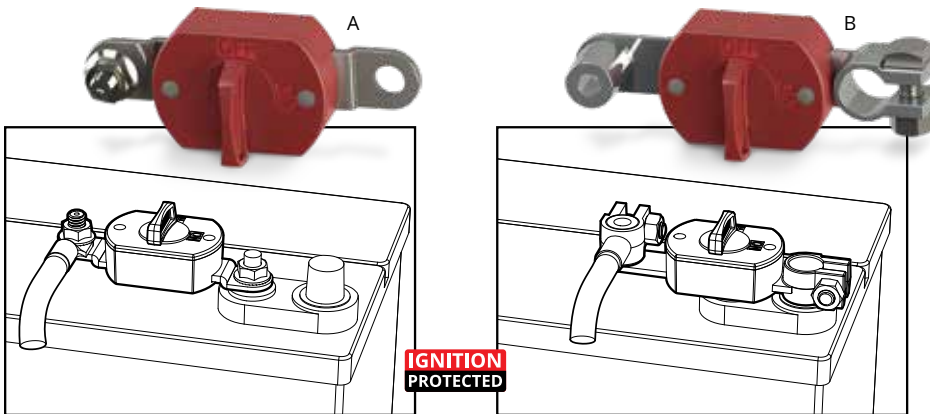
Product code	4363-BSS to 4369-BSS
--------------	-----------------------------



EMERGENCY VEHICLE LABEL KIT

For use with ST Blade Fuse Blocks.

Product code	7870-BSS
--------------	-----------------



BATTERY MOUNT SWITCHES

150A continuous rating for smaller outboard boats and vehicles with limited space.

Product code A **5990-BSS** Terminal Mount Switch

Product code B **5991-BSS** Post Mount Switch



20 A BATTERYLINK® CHARGERS

Charge two batteries at or away from the dock with a 20 A multistage battery charger and integrated 170 A Automatic Charging Relay (ACR).

Product code **7607-BSS** European: CEE 7/7

Product code **7606-BSS** International: Bare wire



M-SERIES BATTERY SWITCHES

Up to 300 Amps continuous-rated, three-position no combine battery switch in red and black.

Product code **6008-BSS** Red

Product code **6008200-BSS** Black



MARINE GRADE SHORT STOP CIRCUIT BREAKERS

Use a circuit breaker instead of a fuse. Push-to-reset operation only disconnects when tripped. Red insulating boot included in retail package only.

Product code **7150-BSS** 5 A DC

Product code **7151-BSS** 10 A DC

Product code **7152-BSS** 15 A DC

Product code **7153-BSS** 20 A DC

Product code **7154-BSS** 25 A DC

Product code **7155-BSS** 30 A DC

Product code **7156-BSS** 40 A DC

Product code **7157-BSS** 50 A DC

Product code **7160-BSS** Red Insulating Boot



BATTERY CHARGER MOUNTING ADAPTER

Easily mount a Blue Sea Systems P12 or ProMariner ProNauticP Battery Charger without drilling new holes.



CONTACT 6

The Contact 6 is a digital control and monitoring module that can be networked with other CZone products or a stand alone. The Contact 6 has six independent channels that are positively or negatively switched and is ideal for smaller marine applications or recreational or specialty vehicles. Delivered with gland and plug pack.

Product code **80-911-0140-00**



CONTACT 6 PLUS

The Contact 6 Plus is an affordable plug and play digital switching system and has been designed for fast, simple and efficient installation. With a drill only installation procedure, combined with a new smart harness, installation could not be easier. The Contact 6 Plus has six 15 A channels and is ideal for smaller applications and works out of the box with a default one to one mapping with the Contact 6 Plus Keypad.



CONTROL 1

The Control 1 combines multiple input and output devices into one module, providing a high density 24-channel module which minimizes installation, interconnections and footprint, while delivering best value per circuit. The Control 1 features the same proven, rugged CZone design including IPx5 water ingress protection and complete mechanical fuse plus bypass on all circuits as required by ABYC/CE. Industry standard Deutsch connectors provide easy installation.



CONTACT 6 PLUS KEYPAD

The Contact 6 Plus Keypad is a waterproof membrane keypad with an easy single cable installation and works as a standalone controller or can be added to a full CZone system. The keypad is available in 6 and 12-way options, mounted horizontal or vertical, and is supplied with standard label sets. If there is a need for custom printed graphics, this is also an option.





15A 12/3 HEAVY-DUTY EXTENSION CORDS

Heavy-duty marine-grade cable with robust, fully molded ends for use in harsh environments.

Product code **151225** 25 ft

Product code **151250** 50 ft



GRAY PIGTAIL ADAPTERS

Allows waterproof connection of inlets and cords. Adapters are fully molded with a sealing collar for use in wet locations and contain LED lights for visual power indication.

Product code **104SPPG** 15 A Plug to 30 A Connector

Product code **105SPPG** 30 A Plug to 15 A Connector



DAY/NIGHT SOLAR VENT

The new 3" and 4" Day/Night Solar Vent features design threads into included deck plate, and is removable from outside without tools. On/off fan switch, LED lights and intake/exhaust switch accessible from inside the cabin for ease of use.

Product code **N20803W** 3" white

Product code **N20803S** 3" stainless steel

Product code **N20804W** 4" white

Product code **N20804S** 4" stainless steel



DELUXE STAINLESS STEEL WIPER BLADES

New higher quality stainless steel wiper blades now offered in 12"-26" lengths, in both stainless steel and black colors.



IP67 LED STAINLESS STEEL SPOTLIGHT

IP67 Stainless Spotlight features a 7", 12 LED array, and IP67 stainless construction. Creates approx. 3 times concentrated spot diameter while drawing roughly half the power of comparable halogen spotlights. Wireless communication using mounted bridge or hand held remote.

Product code **23050A** Spotlight with Remote

Product code **23051A** Spotlight Only



MOTOR CONTROLLER

Synchronized control of single or dual speed 12V/24V wiper systems, features intuitive automotive style functionality. Easy to use with included Contura switch, and easy to install with 1/4" spade connectors. IP67 potted aluminium construction for harsh environment durability.

Product code **76090** Single Speed

Product code **76190** Single Speed OEM

Product code **76080** Dual Speed

Product code **76180** Dual Speed OEM



SOLAR VENT CAP FOR DAY/NIGHT SOLAR VENTS

Twist-in sealing cap for use when the New Day/Night Solar Vent is removed from the deck surface. Available for both vent sizes, 3" and 4".

Product code **N20803CAP** for 3" Vents

Product code **N20804CAP** for 4" Vents



REPLACEMENT TRIM RING FOR DAY/NIGHT SOLAR VENTS

Threaded trim ring replacements for deck surface mounting or interior trim use. Available for the New 3" and 4" Day/Night Solar Vents.

Product code **N20803RING** for 3" Vents

Product code **N20804RING** for 4" Vents



AC MASTER 120 V

These affordable sine wave inverters convert 12 or 24 V battery voltage into reliable 120 V 50/60 Hz grid power, making them ideal for recreational and semi-professional applications. The AC Master series is easy to install and delivers full output, even under the most demanding conditions. The pure sine wave technology provides an outstanding power quality, ensuring the correct functioning of sensitive equipment.

Product code **28510700** 12/700 (120 V)

Product code **28512000** 12/2000 (120 V)

Product code **28520700** 24/700 (120 V)

Product code **28522000** 24/2000 (120 V)



AC MASTER 300/500

Representing complete value for money, these ruggedly built inverters provide essential home comforts when you're far from the nearest grid connection, converting 12 or 24 V battery voltage into reliable 230 V 50/60 Hz or 120 V 50/60 Hz grid power. Easy to install: convenient IEC socket with IEC plug included.

28010302 12/300 (230 V)

28010502 12/500 (230 V)

28020302 24/300 (230 V)

28020502 24/500 (230 V)



MAC PLUS

Boost charge voltage when service battery is located further from charging source or in systems with a smart alternator. When a stable power supply or different system voltage is needed.

Product code **81205100** 12/12-50

Product code **81205300** 12/24-30

Product code **81205200** 24/12-50

Product code **81205400** 24/24-30



ALPHA COMPACT

A secondary alternator or PTO option is common in the automotive market. Alpha Compact alternators are optimized to deliver high output in energy storage applications. They can be used as a stock alternator replacement or as a secondary alternator. Combined with our Alpha Pro regulators, they create plug-and-play charging solutions in 12 V or 24 V, up to 200 A. Volvo Penta compatible models are available.

Product code **46614120** 14/120

Product code **46614200** 14/200

Product code **46628110** 28/110

Product code **46628150** 28/150

Product code **46628082** 28/80 VP

Product code **46628112** 28/110 VP

Product code **46628152** 28/150 VP



SOLAR CHAGEMASTER

This solar charge regulator based on PWM technology is a great solution to charge your batteries with solar energy. Suitable for both 36 cells panels (in 12 V systems) and 72 cells panels (in 24 V systems). Its protection against water spray, suitability for high ambient temperature and compatibility with negative grounding, make it the perfect solar regulator for marine and mobile environments.

131822000 SCM20 PWM

131824000 SCM40 PWM



MLI-E

The Mastervolt MLI-E Lithium Ion battery closes the gap between the very compact MLS battery and the successful high capacity MLI Ultra series. The MLI-E is ideal for applications where long lifespan, light weight, fast charging and compactness are key. Its practical form factor makes the MLI-E perfectly suitable for mobile applications.

Product code **66011200**



MASTERBUS AC MASTER INTERFACE

The MasterBus AC Master Interface allows seamless integration of an AC Master inverter into every MasterBus network. By adding the AC Master Interface to your installation, you can now control your AC Master inverter via our MasterBus communication network.

Product code **77032700**

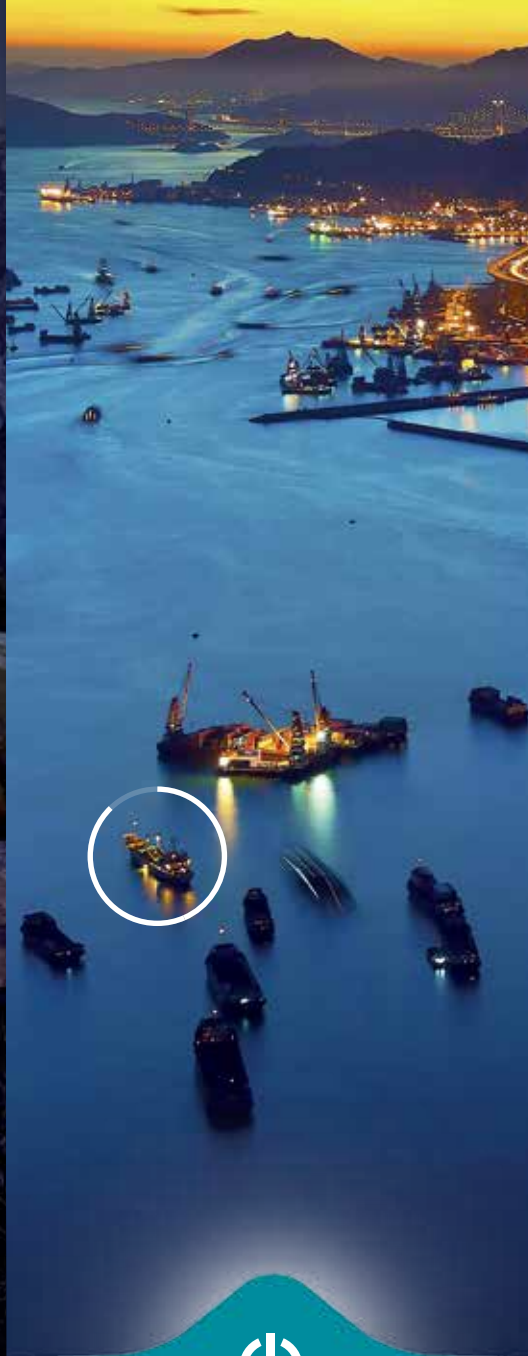


MASTERBUS LIN BUS INTERFACE

The MasterBus LIN Bus Interface has been developed to enable the Volkswagen Crafter to communicate with our MLI Ultra Lithium Ion battery. The MasterBus LIN Bus Interface is designed for use in vehicles equipped with a LIN enabled (secondary) alternator option.

Product code **77032800**





EMEA

Mastervolt
Snijdersbergweg 93
1105 AN AMSTERDAM
The Netherlands
T +31 (0) 20 34 22 100
www.mastervolt.com

USA

Power Products LLC
N85 W12545 Westbrook Crossing
Menomonee Falls, WI 53051
U.S.A.
T +1 800 307 67 02
www.powerprodllc.com

APAC

BEP Marine
40-42 Apollo Drive
Albany, Auckland 0632
New Zealand
T +64 9 415 72 61
www.bepmarine.com

POWER PRODUCTS LLC
Marine & Mobile Solutions

Version no. 121118EN
Product code 500004014
©2018 Mastervolt. All rights reserved
www.mastervolt.com

ANCOR

BEP

BLUE SEA
SYSTEMS

C203

LENCO

MARINCO

MASTERVOLT

ProMariner™