

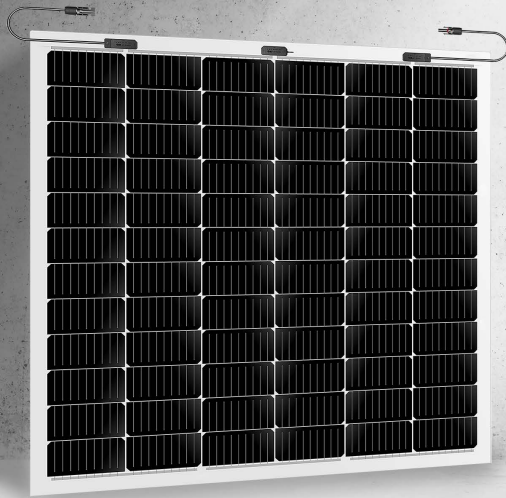
ELIOS

Voltaic210F-T



210Watts

SemiFlexible 3M Tape



- ✓ MONO-CRYSTALLINE
- ✓ Flexible up to 213°
- ✓ Grade A Solar Cell
- ✓ PERC
- ✓ HALF-CELL
- ✓ Quick Installation
- ✓ Only 4.5 kg

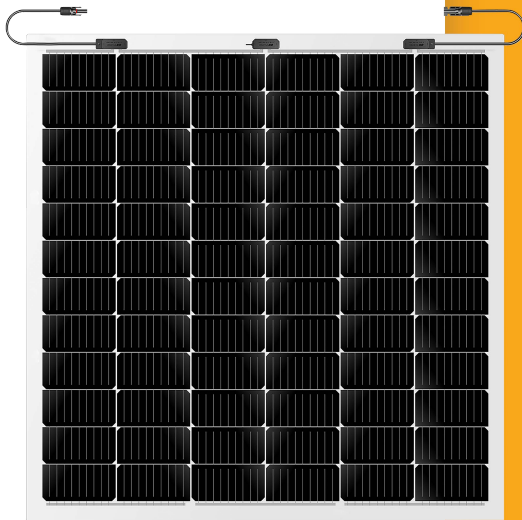
Renewable Power

Enjoy **Green** Life

TIER-1
MANUFACTURER



ELIOS | Voltaic210F-T



Semi-Flexible Mono-crystalline 210W 3M Tape

Meet our innovative 210W Semi-Flexible Solar Panel, engineered with Ultra Light-weight PERC Solar Cells. The ideal choice for off-grid solar systems with curved surfaces, particularly for transportation applications like RVs and boats. From harsh weather to challenging environments, this panel embraces it all and make it perfect for outdoor use. Embrace a brighter, more sustainable future with Voltaic210F-T.



Applications

Balconies | Roof Top | Yacht | Boat | Trailer | RV | Curvy Surfaces

Certifications

FCC | CE | RoHS | TUV |
IEC 61215: In 2016 | IEC 61730: 2016 | PID test.



Key Features



Bendable up to 213 Degrees, Perfect for Curved Surfaces, like Boats



Ultra Lightweight Materials for Easy Setup



Easy to Setup and Install



Extreme Weather Resilience, Tested for Durability.



Produces 210 W, Providing a 5% Production Increase Over Standard 200 W Panels



12-year Material and Workmanship Warranty



210W Mono-Crystalline Silicon Solar Module

ELECTRICAL SPECIFICATIONS

Rated Peak Power (Pmax)	210 W
Open Circuit Voltage (Voc)	49.2 V
Short Circuit Current (Isc)	5.36 A
Maximum Power Voltage (Vmp)	41.4 V
Maximum Power Current (Imp)	5.07 A
Solar Cell Efficiency	19.3%
Power Tolerance	±5%
Operating Temperature	-40°F to 185°F (-40°C to 85°C)
Standard Test Conditions	1000W/m ² , 25°C, AM1.5

MECHANICAL SPECIFICATIONS

Solar Cell Type	Monocrystalline
Dimensions (LxWxD)	42.6 x 41 x 0.1 in (1083 x 1040 x 3 mm)
Net Weight	4.5 kg (9.92 lbs)
Backsheet Color	White
Output Port	MC4
Output cable	TUV 4.0 mm ²
Wire length	(+)450mm, (-)450mm, or customized

PACKAGING & SHIPPING INFORMATION

Retail Box Dimensions (LxWxD) & Weight	Quantity 1 unit per retail box: 45.9 x 45 x 2.2 in (1165 x 1144 x 55 mm); 15.9 lbs (7.2 kg)
40'HQ	27*2 Pieces per pallet 1080 Pieces per container

WARRANTY

12-year material and workmanship warranty
25-year linear power warranty (attenuation ≤ 2% in the first year,
≤ 0.55% per year thereafter)

REGULATORY & CERTIFICATION

FCC, CE, RoHSTUV Certifiante

IEC 61215: In 2016, IEC 61730: 2016, PID test.

