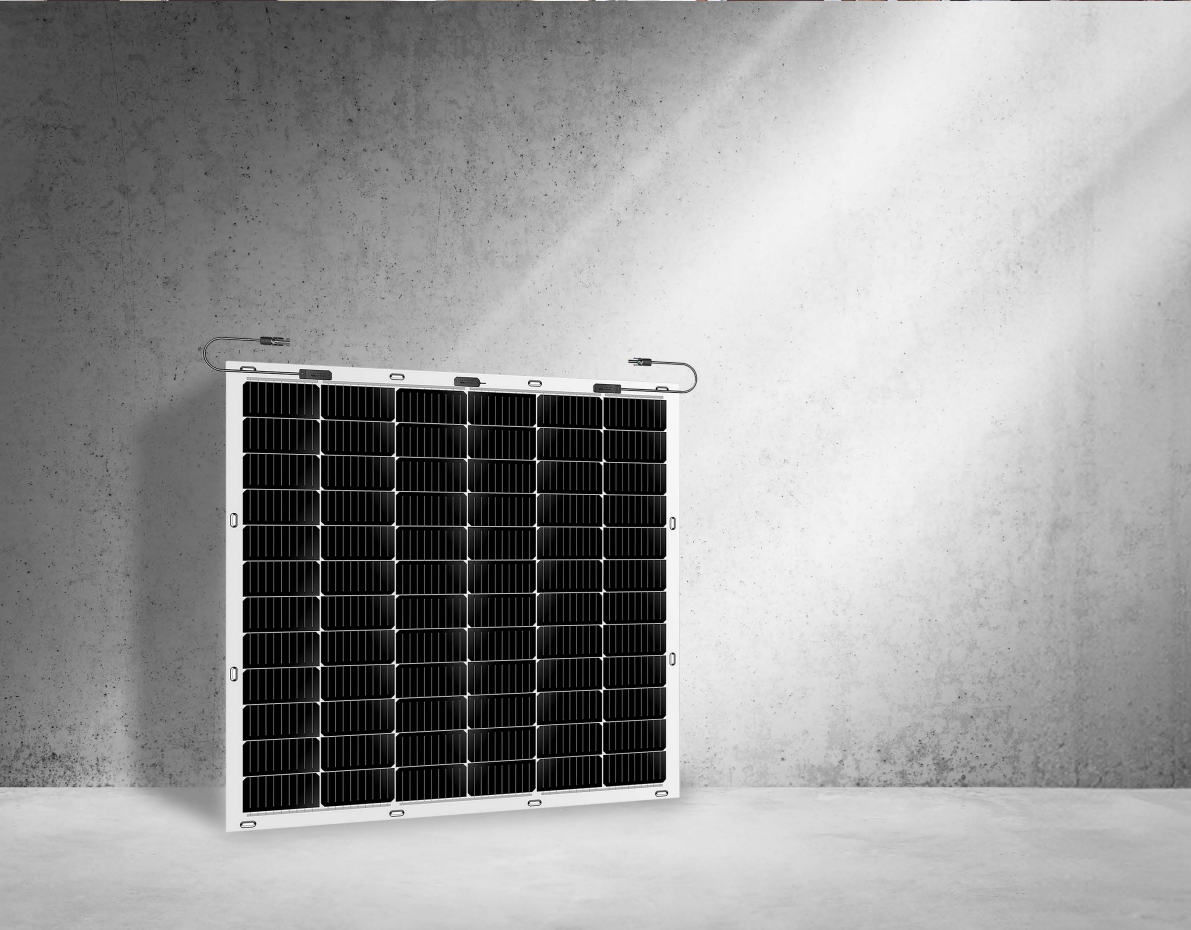


ELIOS

Voltaic210F-B



210Watts

SemiFlexible Balcony with Eyelet

- ✓ MONO-CRYSTALLINE
- ✓ Mounting Holes
- ✓ Flexible up to 213°
- ✓ Grade A Solar Cell
- ✓ PERC
- ✓ HALF-CELL
- ✓ Quick Installation
- ✓ Only 4.5 kg

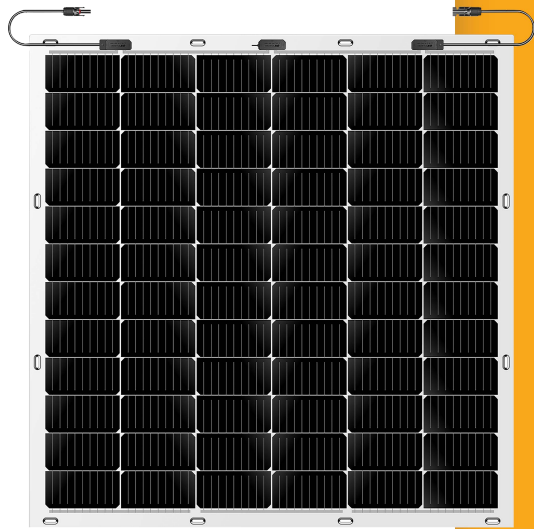
Renewable Power

Enjoy **Green** Life

TIER-1
MANUFACTURER



ELIOS | Voltaic210F-B



Semi-Flexible Mono-crystalline 210W Balcony with Eyelet

Meet our innovative 210W Semi-Flexible Solar Panel, perfect for balconies and more. Engineered with Ultra Light-weight Monocrystalline Solar Cells, it bends to fit curved surfaces like balconies, rooftops, RV, boats and more.

With pre-drilled mounting holes, installation is a breeze. From harsh weather to challenging environments, this panel embraces it all.

Say hello to a brighter, more sustainable future with Voltaic210F-B.



Applications

Balconies | Roof Top | Yacht | Boat | Trailer | RV | Curvy Surfaces

Certifications

FCC | CE | RoHS | TUV |
IEC 61215: In 2016 | IEC 61730: 2016 | PID test.



Key Features



Bendable up to 213 Degrees, Perfect for Curved Surfaces, like Balconies



Ultra Lightweight Materials for Easy Setup



Effortless Installation with 12 Metal-reinforced Mounting Holes



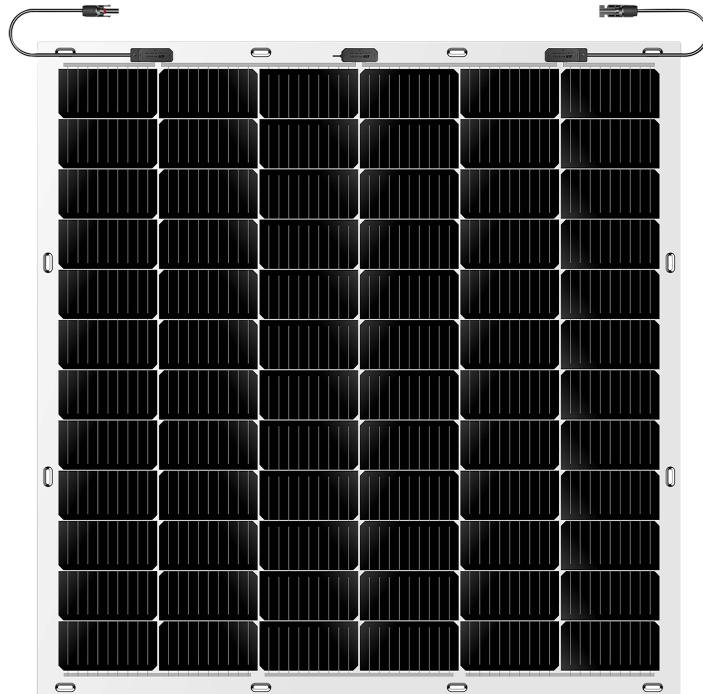
Extreme Weather Resilience, Tested for Durability.



Produces 210 W, Providing a 5% Production Increase Over Standard 200 W Panels



12-year Material and Workmanship Warranty



210W Mono-Crystalline Silicon Solar Module

ELECTRICAL SPECIFICATIONS

Rated Peak Power (Pmax)	210 W
Open Circuit Voltage (Voc)	49.2 V
Short Circuit Current (Isc)	5.36 A
Maximum Power Voltage (Vmp)	41.4 V
Maximum Power Current (Imp)	5.07 A
Solar Cell Efficiency	19.3%
Power Tolerance	±5%
Operating Temperature	-40°F to 185°F (-40°C to 85°C)
Standard Test Conditions	1000W/m ² , 25°C, AM1.5

MECHANICAL SPECIFICATIONS

Solar Cell Type	Monocrystalline
Dimensions (LxWxD)	42.6 x 43.5 x 0.1 in (1083 x 1104 x 3 mm)
Net Weight	4.5 kg (9.92 lbs)
Backsheet Color	White
Output Port	MC4
Output cable	TUV 4.0 mm ²
Wire length	(+)-450mm, (-)-450mm, or customized

PACKAGING & SHIPPING INFORMATION

Retail Box Dimensions (LxWxD)	Quantity 1 unit per retail box: 45.9 x 45 x 2.2 in (1165 x 1144 x 55 mm);
Weight	15.9 lbs (7.2 kg)
40'HQ	27*2 Pieces per pallet 1080 Pieces per container

WARRANTY

12-year material and workmanship warranty
25-year linear power warranty (attenuation ≤ 2% in the first year,
≤ 0.55% per year thereafter)

ACCESSORIES



Cable Tie x 12

REGULATORY & CERTIFICATION

FCC, CE, RoHS
TUV Certificate
IEC 61215: In 2016, IEC 61730: 2016,
PID test.

