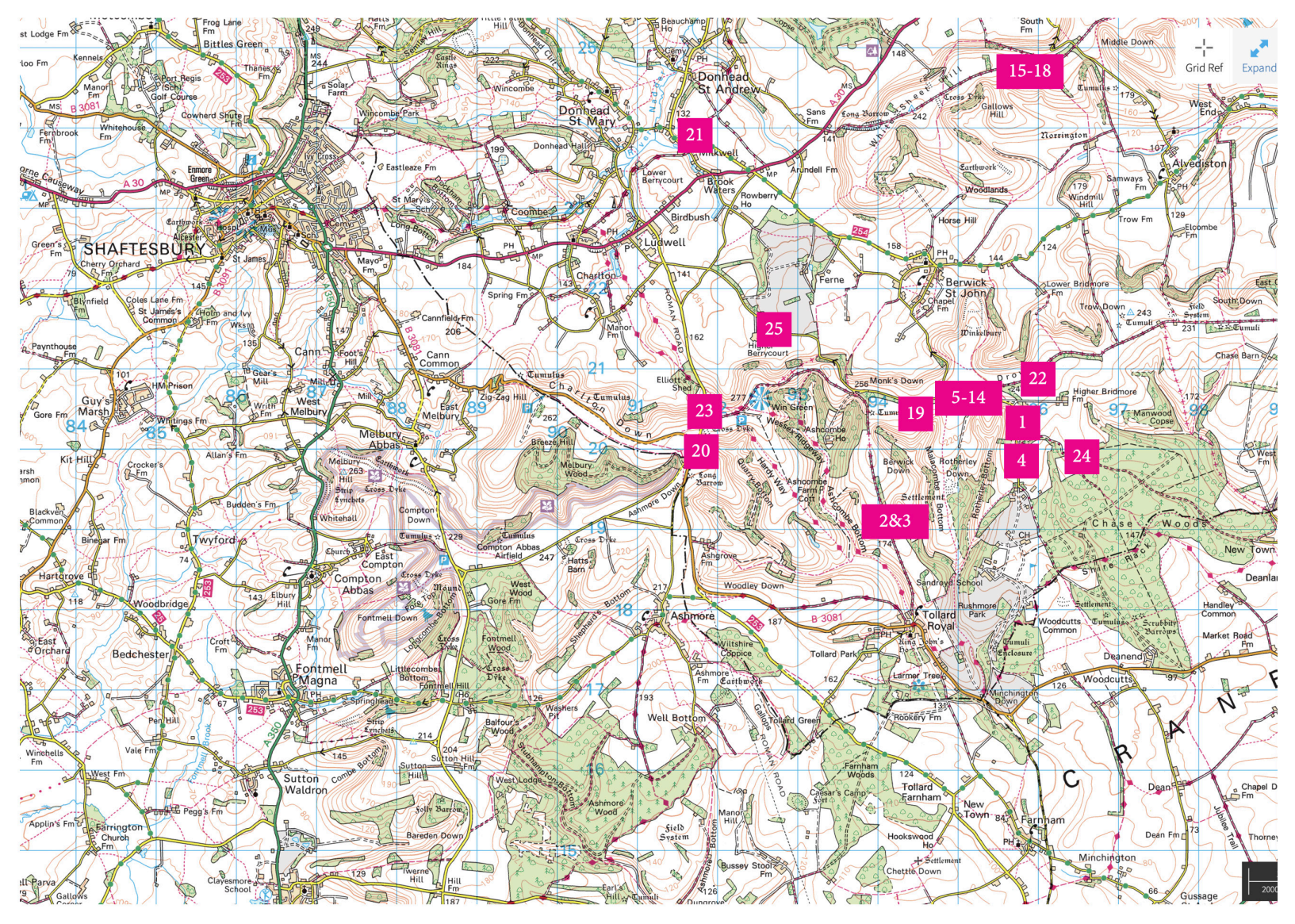


An abstract painting featuring thick, expressive brushstrokes. The upper portion is dominated by various shades of blue and teal, with some lighter, almost white, areas. Below this, there are horizontal bands of dark brown, olive green, and muted yellow-green. The overall texture is very tactile and layered.

ALEX EDWARDS

**THREE
MILE
RADIUS**

PAINTINGS & PRINTS IN A PANDEMIC



15-18

21

25

22

5-14

1

24

23

20

19

4

2&3

SHAFTESBURY

Donhead St Andrew

Fontnell Magna

Ashmore

Toller Royal

11 Parva

2000



and
est. C
9
Vest
m
wri
anlar
F
el D
ome
2000

WITHIN A THREE MILE RADIUS

Plein air works close to home

In an unprecedented year of lockdowns I've been drawn to high ground: Whitesheet Hill, Monksdown, Win Green, Winkelbury Hill and Rotherley Down. To me this downland, run through with ancient holloways, feels archetypal. Surrounded by red kites, buzzards and, as spring emerges, cuckoos and larks, it is timeless. Nature is palpable here.

My plein air paintings are unpremeditated reactions to a landscape I love; the shifting light and the striking colour chords it throws up. Pale green ribbons fleetingly lit up against deep violets. Ever present distant blues.

When I set out to paint I try to simplify and to be instinctive. The best results involve a certain recklessness that allows the paint to speak for itself. My aim is to convey a sense of time and place in as paired down and painterly way as possible. This is a constant, but deeply rewarding learning process and a lifetime's endeavour.

IN AND AROUND ROTHERLEY DOWN DECEMBER 2020 - MARCH 2021



1 20th December.
25 x 30 cm. Oil on Canvas



2 26th February.
25 x 30 cm. Oil on Canvas.



3 8th March.
25 x 30 cm. Oil on Canvas



4 17th March.
25 x 30 cm. Oil on Canvas.



5 22nd March.
30 x 40cm. Oil on Canvas.



6 27th March I.
20 x 25 cm. Oil on Canvas.

IN AND AROUND ROTHERLEY DOWN MARCH & APRIL 2021



7 27th March II.
20 x 25 cm.
Oil on Canvas.



8 28th March.
20 x 25 cm.
Oil on Canvas.



9 1st April.
20 x 25 cm.
Oil on Canvas.



10 2nd April.
20 x 25 cm.
Oil on Canvas.



11 5th April.
20 x 25 cm.
Oil on Canvas.



12 6th April.
20 x 25 cm.
Oil on Canvas.



13 7th April.
20 x 25 cm.
Oil on Canvas.



14 21st April.
20 x 25 cm.
Oil on Canvas.

WHITESHEET HILL, MONKSDOWN & WIN GREEN JANUARY - APRIL 2021



15 23rd January. From Whitesheet towards Winkelbury. 20 x 30cm. Oil on Canvas.



16 3rd February. From Whitesheet towards Winkelbury Hill. Oil on canvas.



17 19th February. Win Green. 20 x 25cm. Oil on Canvas.



18 21st March. From Whitesheet towards Win Green. 25 x 30cm. Oil on Canvas.

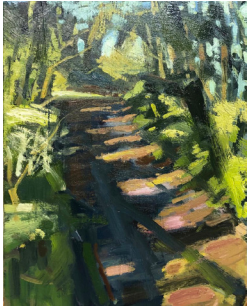


19 23rd April. From Monksdown towards Whitesheet Hill. 25 x 30cm. Oil on canvas.

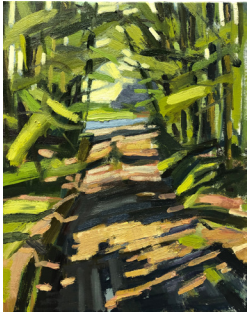


20 2nd May. South from Win Green. 20 x 25cm. Oil on Canvas.

LOCKDOWN I - APRIL & MAY 2020. TRACKS AND OXDROVES



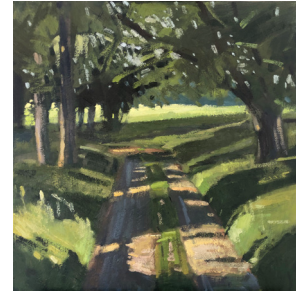
21 22nd April 2020
Shepherd's Lane,
Donhead St Mary. 40 x 50cm
Oil on Canvas.



22 25th April 2020
Oxdrove at Monksdown
40 x 50cm Oil on Canvas.



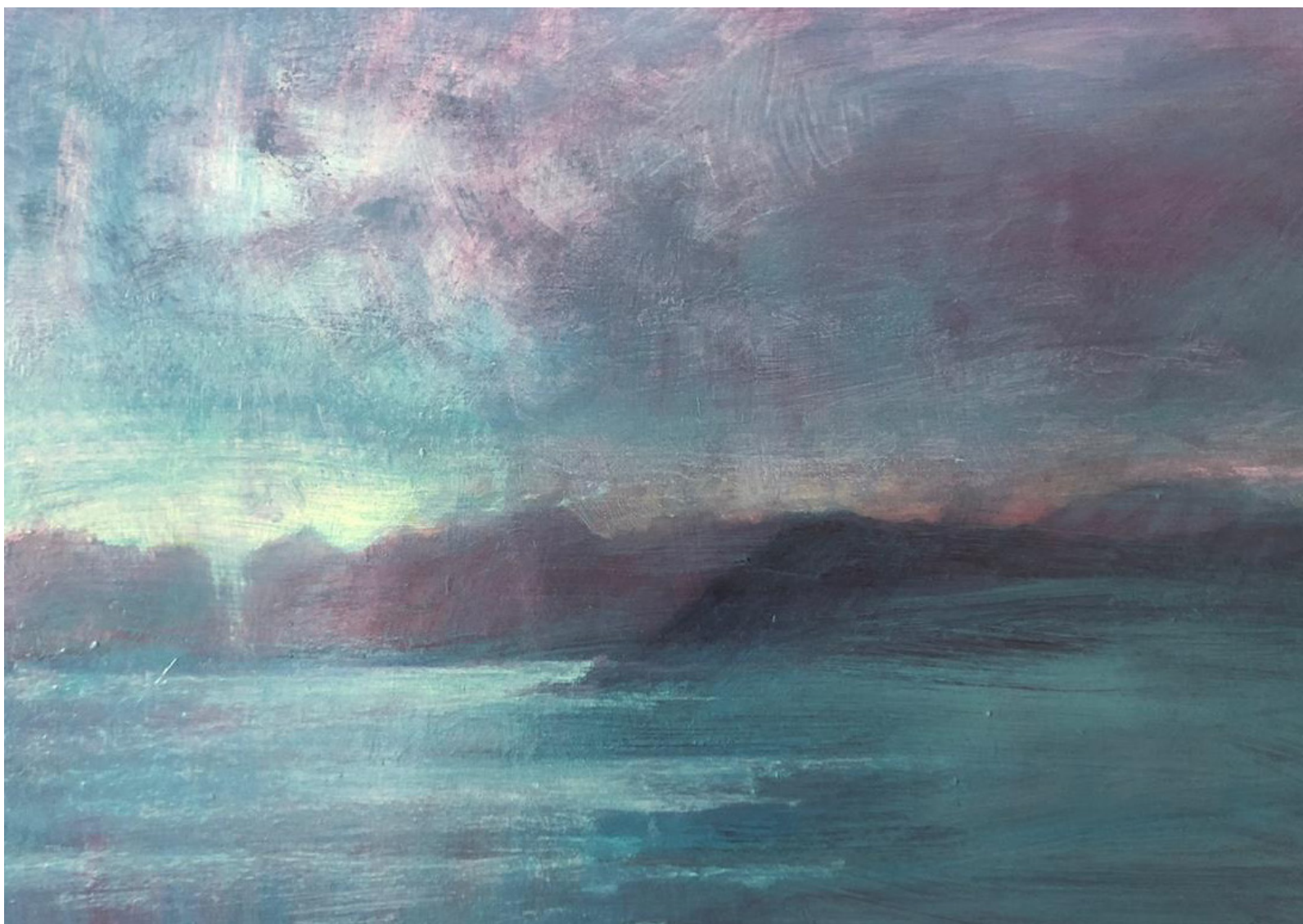
23 Over Charlton Down
Oil on Canvas. 75 x 100cm
Studio painting.



24 25th May 2020.
Rushmore Woods
Oil on Canvas. Approx 60 x 60 cm



25 27th May 2020.
Ferne Hollow
Oil on Canvas. Approx 65 x 65 cm



BEYOND A THREE MILE RADIUS

“Islands are places where the imagination goes on holiday, ideas in physical form”

Philip Marsden, The Summer Isles

The studio works I’ve made in the past year draw on trips made before or between lockdowns. In particular a number of journeys in Arctic Norway between Bodø on the coast, through the Lofoten Islands and up to Tromsø; a land of islands, mountains and aquamarine waters. One of these journeys was in November, at that latitude a time of almost perpetual twilight.

These works are the opposite of plein air studies; based on memories or drawings made in the field, they’re an amalgam of an idea and a place; an echo of what it felt like to be in a wild landscape. Most of the paintings and monotypes* started as drawings, then fermented over time to emerge in the studio. Expressions of a desire to get out.

** Monotypes are paintings made in ink onto a plate, printed onto paper using an etching press. The printing process destroys the image on the plate, so unlike other forms of printing, every monotype is a one-off.*

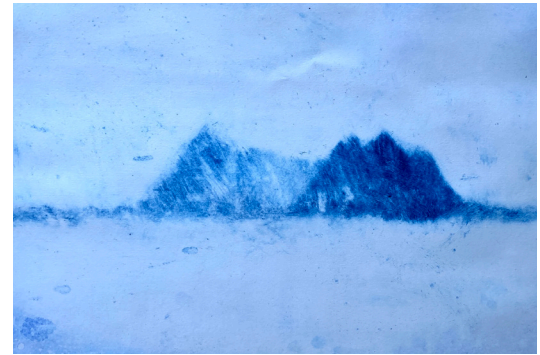
MOSKEN AND VÆRØYA ISLANDS, ARCTIC NORWAY



26 Mosken and Værøya Islands I.
Monotype 1/1 35 x 27 cm.



Charcoal drawing
made in the field.



27 Mosken and Værøya Islands II
Monotype 1/1
40 x 50cm.



28 Mosken and Værøya Islands III
Norwegian Arctic.
Mixed media drawing made in the field.
Approx 10 x 15 cm.



29 Mosken and Værøya Islands IV
Norwegian Arctic.
Mixed media drawing made in the field. Approx 8 x 25cm.

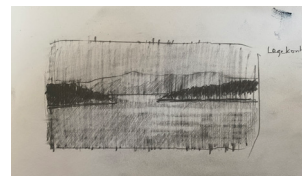
THE LOFOTEN ISLANDS & ARCTIC NORWAY



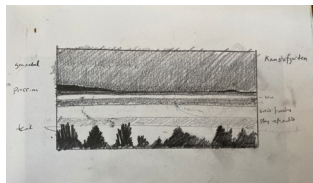
30 Lofoten. November half light. Oil on paper.
57 x 82cm.



31 Lofoten. Mixed media
drawing made in the field.
Approx 10 x 15 cm.



Pencil drawing made in the field.



Pencil drawing made in the field.



32 Kanstadjorden, Lofoten,
Mixed media drawing.
Approx 10 x 15 cm.



33 Kanstadjorden, Lofoten, Norwegian Arctic
Oil on paper. 28 x 42cm

THE LOFOTEN ISLANDS, ARCTIC NORWAY



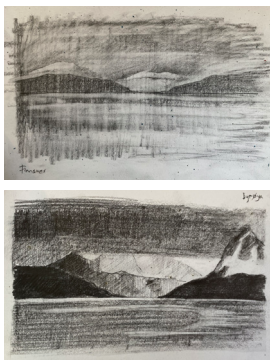
34 Lofoten Islands, Norwegian Arctic. Oil on paper. 70 x 40 cm.



Pencil drawing made in the field.



35 On the road to Henningsvær, Lofoten. Monotype 1/1. 28 x 36 cm.



36 Dyroya to Finnsnes. Oil on canvas. 75 x 100 cm.

DOWNLANDS & HIGHLANDS



37 Downland escarpment, Win Green.
Monotype 1/1. 66 x 23cm



38 Fields under Charlton Down.
Monotype 1/1. 40 x 50cm.



39 Downland fields from
Whitesheet.
Monotype 1/1. 16 x 22cm



40 Downland Hedgerows.
Monotype 1/1.
40 x 50cm.

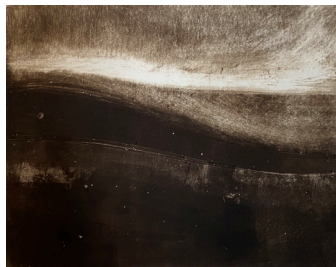


41 Under Winkelbury.
Monotype 1/1. 23 x 15cm



42 U-Shaped Valley, Alladale.
Monotype 1/1. 40 x 50cm.

DOWNLANDS & HEADLANDS



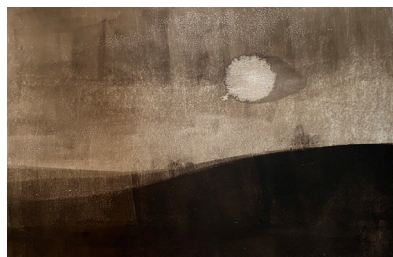
43 Downland sunrise.
Monotype 1/1



44 Hartland Coastline I.
Monotype 1/1. 40 x 50cm



45 Floating Island, Lundy.
Monotype 1/1. 40 x 50cm



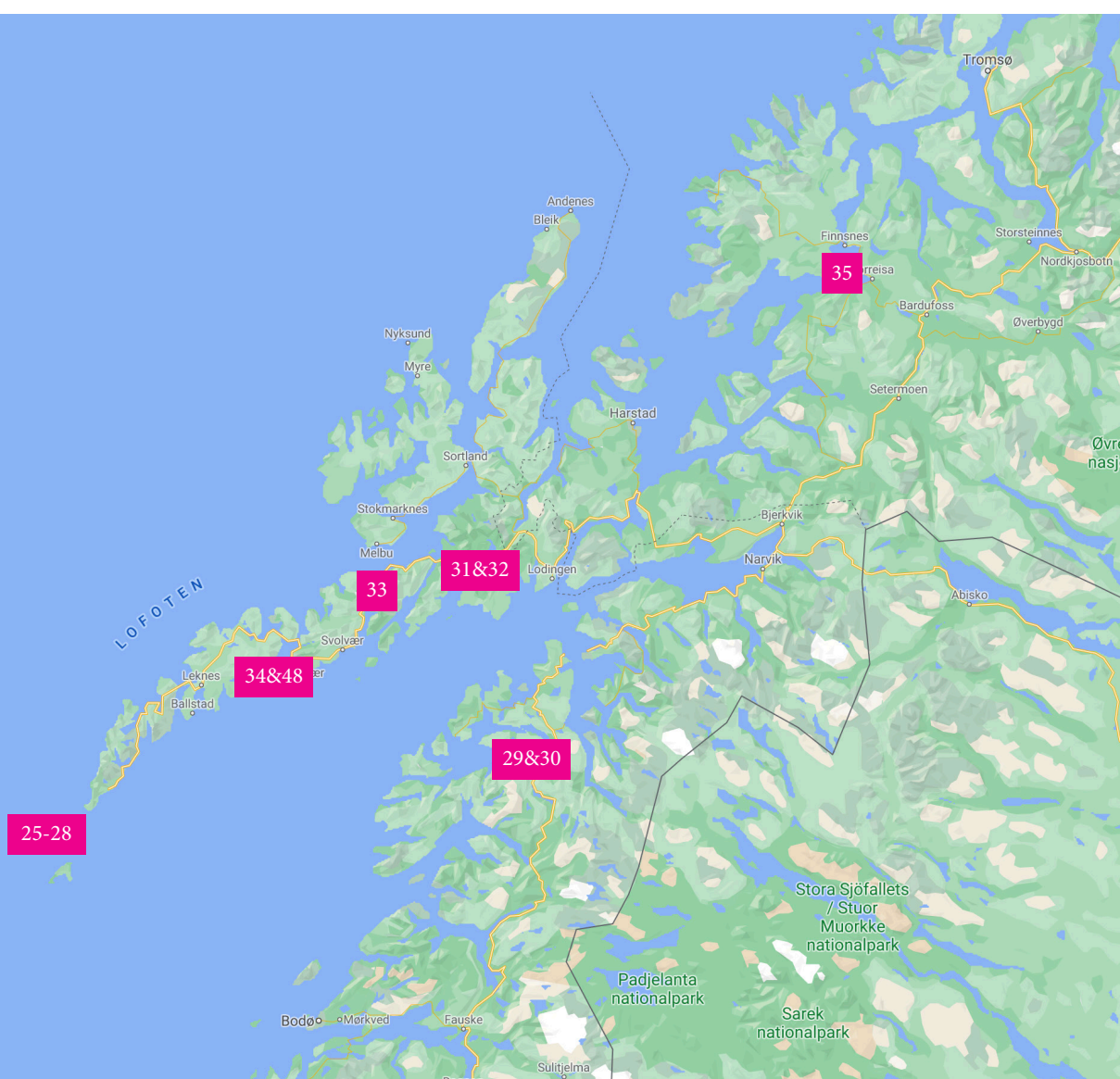
46 Winter Sun.
Monotype 1/1. 40 x 50cm



47 Hartland Coastline II.
Monotype 1/1. 40 x 50cm



48 Hartland Coastline III
Monotype 1/1.
40 x 50cm





ALEX-EDWARDS.NET