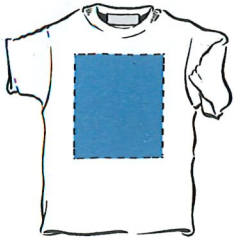


imprint sizing chart screenprinting



FULL FRONT

Suggested Imprint Size:
Adult: 8.0" to 13.0" Wide
Youth: 6.0" to 9.5" Wide
Infant: 3.0" to 5.5" Wide
Suggested Imprint Size:
Adult: 15.0" Wide to 15.0" High
Youth: 9.5" Wide
Infant: 5.5" Wide



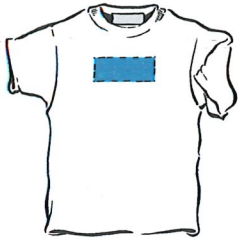
ON THE POCKET

Suggested Imprint Size:
3.0" Wide
Maximum Imprint Size:
3.5" Wide



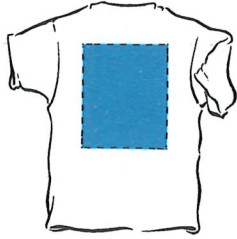
RIGHT/LEFT HIP

Suggested Imprint Size:
3.0" to 4.0" Wide
Maximum Imprint Size:
5.5" Wide



SMALL FRONT

Suggested Imprint Size:
5" to 7.0" Wide
Maximum Imprint Size:
15.0" Wide



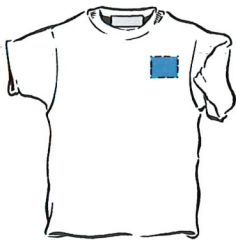
FULL BACK

Suggested Imprint Size:
8.0" to 13.0" Wide
Maximum Imprint Size:
15.0" Wide x 15.0" High



RIGHT/LEFT LONG LEG

Suggested Imprint Size:
3.0" to 4.0" Wide
10.0" to 14.0" Long
Maximum Imprint Size:
5.5" Wide x 15.0" Long



LEFT CHEST

Suggested Imprint Size:
2.5" to 4.0" Wide
Maximum Imprint Size:
4.0" Wide x 4.0" High



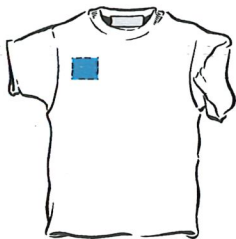
LOCKER PATCH

Suggested Imprint Size:
1" to 4" Wide



RIGHT/LEFT OVERSIZED LEG

Suggested Imprint Size:
3.0" to 4.0" Wide
22.0" Long
Maximum Imprint Size:
5.5" Wide x 22.0" Long



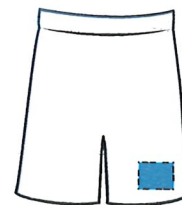
RIGHT CHEST

Suggested Imprint Size:
2.5" to 4.0" Wide
Maximum Imprint Size:
4.0" Wide x 4.0" High



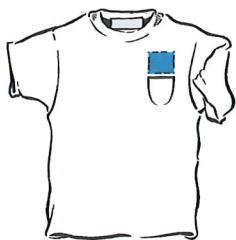
RIGHT/LEFT SHOULDER SHORT/LONG SLEEVE

Suggested Imprint Size:
2.0" to 4.0" Wide
Maximum Imprint Size:
5.5" Wide



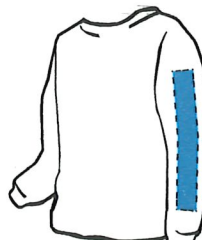
RIGHT/LEFT SHORTS

Suggested Imprint Size:
3.0" to 4.0" Wide
Maximum Imprint Size:
5.5" Wide



ABOVE POCKET

Suggested Imprint Size:
2.5" to 4.0" Wide
Maximum Imprint Size:
4.0" Wide x 3.0" High



RIGHT/LEFT LONG SLEEVE

Suggested Imprint Size:
2.0" to 3.0" Wide
10.0" to 12.0" Long
Maximum Imprint Size:
3.5" Wide x 15.0" Long

- Each area requires different set-up.
- Custom placements are available.
- We do not offer "all over" printing.
- Pullover hoods have height limitations due to the front pocket.
- Embroidery is recommended for baseball caps but 1 color prints can be done.