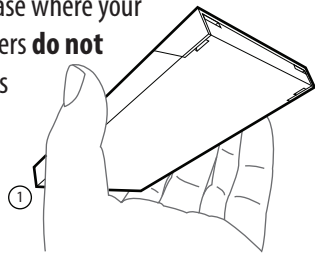


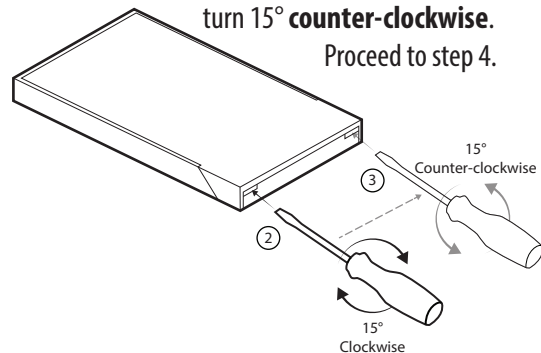
OPENING WITH A FLATHEAD SCREWDRIVER

1. Hold the pack case where your thumb and fingers **do not** cover the latches of the pane.



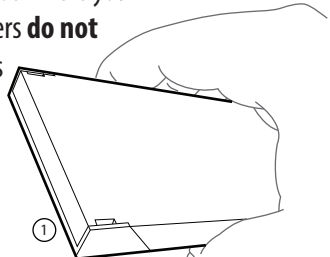
2. Insert a flat-head screwdriver into the **left slot** between the case's cradle and pane and turn 15° **clockwise**. (The pane's tooth will be lifted just above its recessed pocket)
3. Insert a flat-head screwdriver into the **right slot** between the case's cradle and pane and turn 15° **counter-clockwise**.

Proceed to step 4.

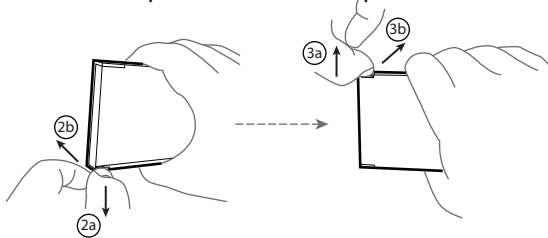


OPENING WITHOUT TOOL ASSISTANCE

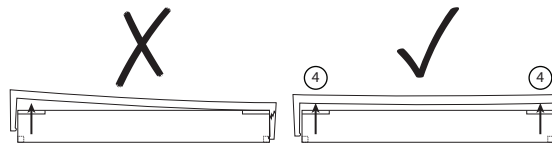
1. Hold the pack case where your thumb and fingers **do not** cover the latches of the pane.



- 2a. Use your fingernail to pull the pane's latch away from the cradle.
- 2b. Push the latch's tooth **just above** the cradle's recessed pocket.
- 3a. Use your fingernail to pull the other pane's latch away from the cradle.
- 3b. Push the latch's tooth **just above** the cradle's recessed pocket. Proceed to Step 4.

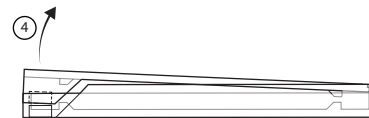


4. Work the pane with little force **back and forth** on each side until the pane separates from the cradle.

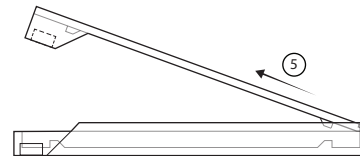


WARNING: DAMAGE CAN OCCUR!

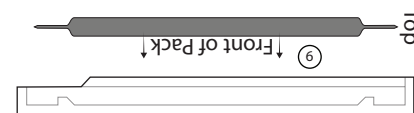
Make sure the tooth on each tab are above their recessed pockets before attempting to open.



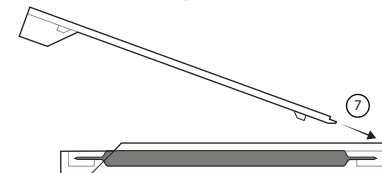
5. Pull the pane away from where it hinges to the cradle.



6. Place the booster pack into the cradle oriented with the top of the pack closest to the Bearish logo, or hinge point.



7. Reinsert the pane into the hinge points in the cradle at an angle that the rails do not collide with the booster pack.



8. Close the latches of the pane until the teeth snap into the recessed pockets of the cradle.

