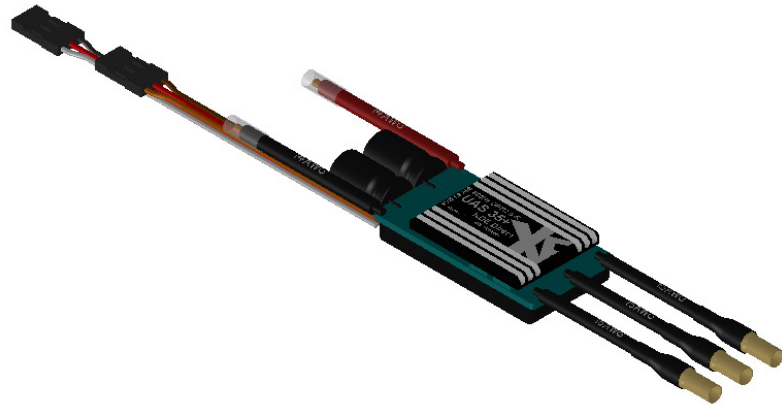


**KDEXF-UAS35 KDE DIRECT XF UAS ESC, 35A+
PRODUCTION RELEASE**



KDE DIRECT XF UAS ESC SPECIFICATIONS

2S-8S Capable (35V Max), 35A+ Continuous
600Hz Refresh Rate, Opto-Isolation (Multi-Rotor Firmware)
Anti-Spark MOSFET Circuitry (S-R Designation)

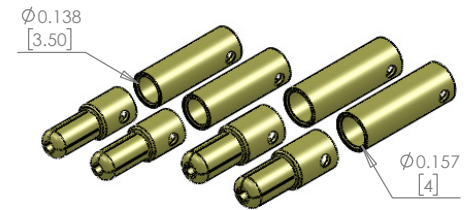
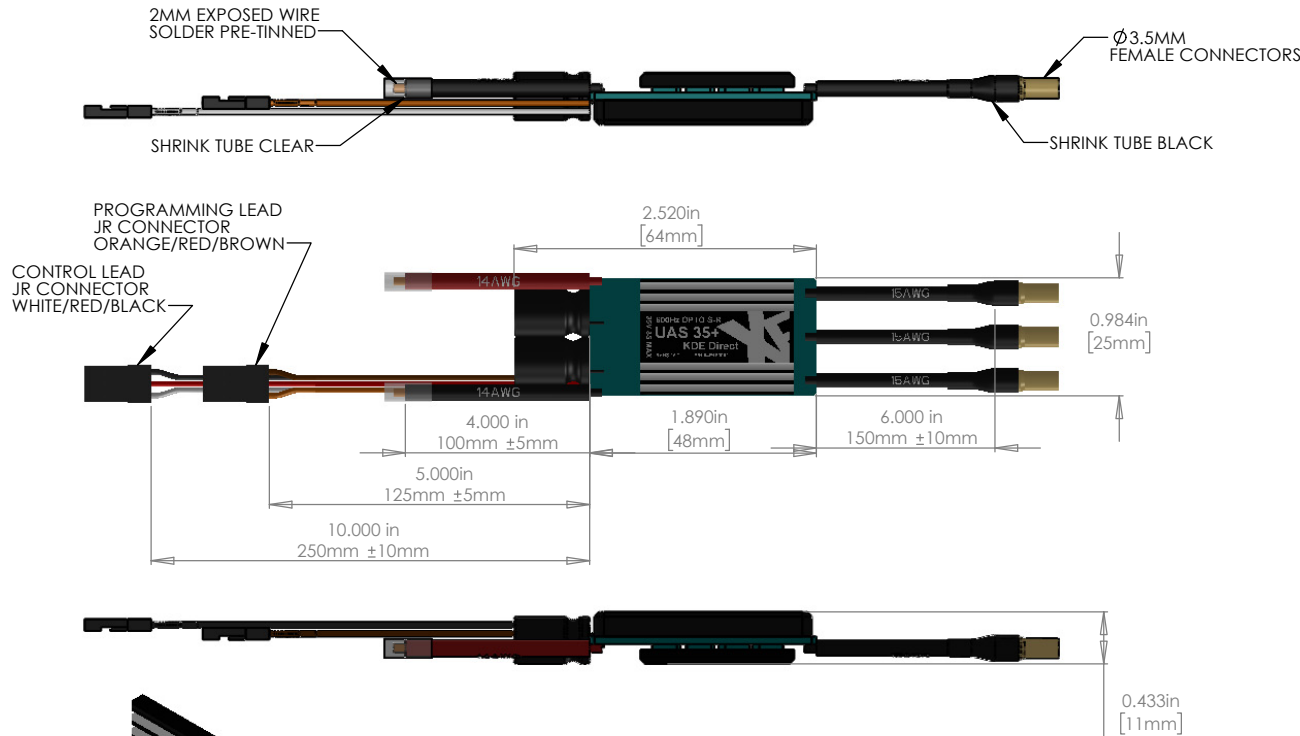
4" (100mm) Power Lead Extensions (14 AWG, Red/Black)
2.0mm Exposed Wire, Pre-Soldered and Clear Shrink Wrap

6" (150mm) Motor Lead Extensions (15 AWG, Black)
Ø 3.5mm Female 24k Bullets, Pre-Soldered and Shrink Wrap

5" (125mm) Programming Lead Extension (22 AWG)
JR Connector, 3-Wire Installed (Orange/Red/Brown)

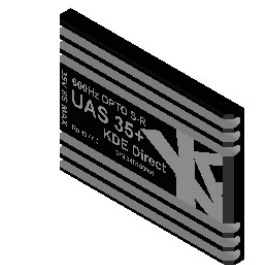
10" (250mm) Control Lead Extension (22 AWG)
JR Connector, 3-Wire Installed (White/Red/Black)

Die-Cut Foam Backing, High-Temp 0.050" Shrink Tube Case

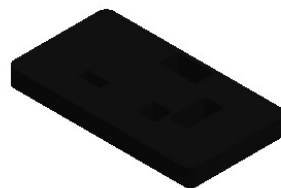


**3.5MM BULLET CONNECTORS
24K, MATCHING PAIR (2 SETS)**

**4.0MM BULLET CONNECTORS
24K, MATCHING PAIR (2 SETS)**



ALUMINUM 6061-T6 HEATSINK



DIE-CUT FOAM BACKING



**www.KDEDirect.com
KDEXF-UAS35**