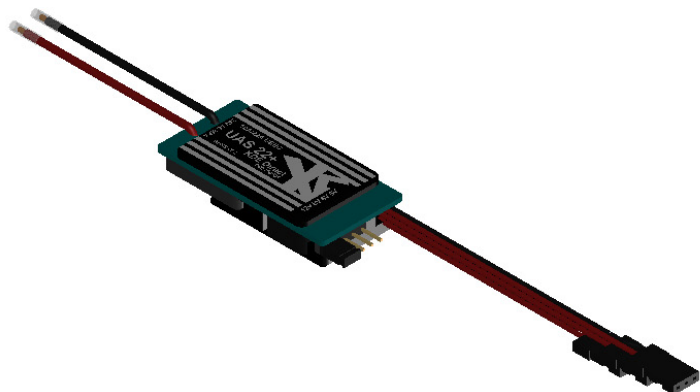


**KDEXF-UBEC22 KDE DIRECT XF UAS UBEC, 22A+
PRODUCTION RELEASE**



KDE DIRECT XF UAS UBEC SPECIFICATIONS

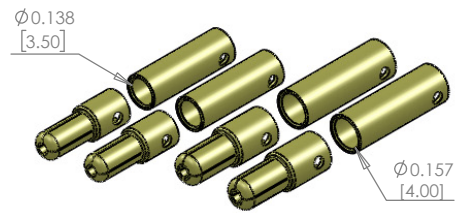
2S-8S Capable (35V Max), 10A Continuous (22A+ Peak)
UBEC, Voltage Filtering and Digital Monitoring Circuitry
5V/6V/8V/12V Selectable Voltage (Pin Jumper)

6" (150mm) Power Lead Extensions (20 AWG, Red/Black)
2.0mm Exposed Wire, Pre-Soldered and Clear Shrink Wrap

(3) 10" (255mm) Servo Output Lead Extensions (22 AWG)
(3) JR Connectors, 2-Wire Installed (Red/Black)
- Triple-Stacked Servo Output Leads and Connectors

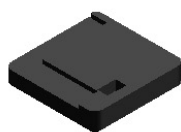
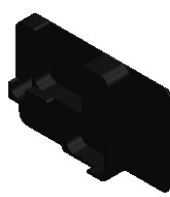
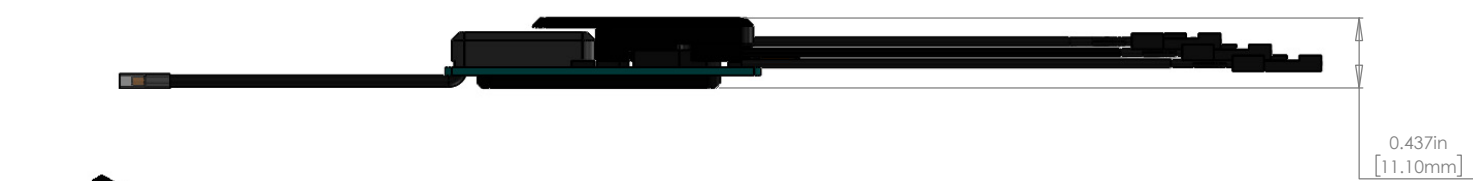
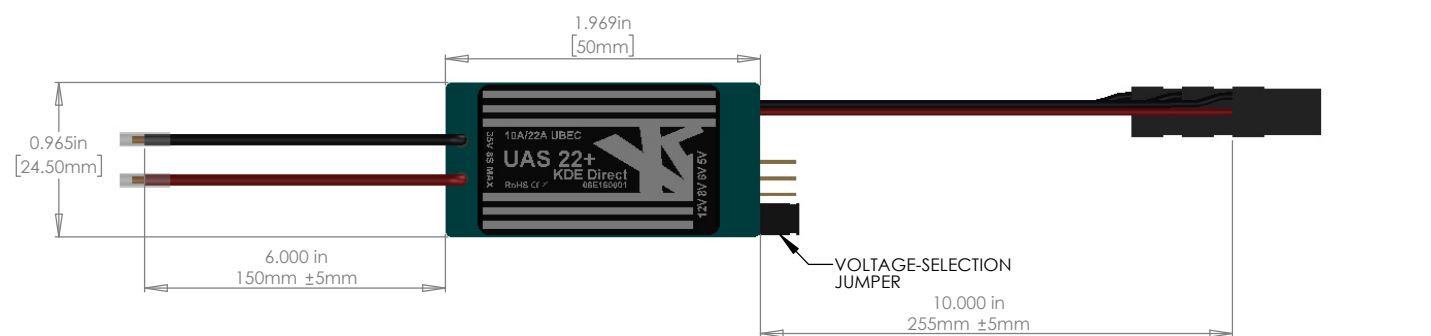
Dual-Aluminum Conduction Heatsinks (Black Anodize)

Die-Cut Foam Backing, High-Temp 0.050" Shrink Tube Case



**3.5MM BULLET CONNECTORS
24K, MATCHING PAIR (2 SETS)**

**4.0MM BULLET CONNECTORS
24K, MATCHING PAIR (2 SETS)**



ALUMINUM 6061-T6 HEATSINK (UPPER)

ALUMINUM 6061-T6 HEATSINK (LOWER)

DIE-CUT FOAM BACKING



**www.KDEDirect.com
KDEXF-UBEC22**