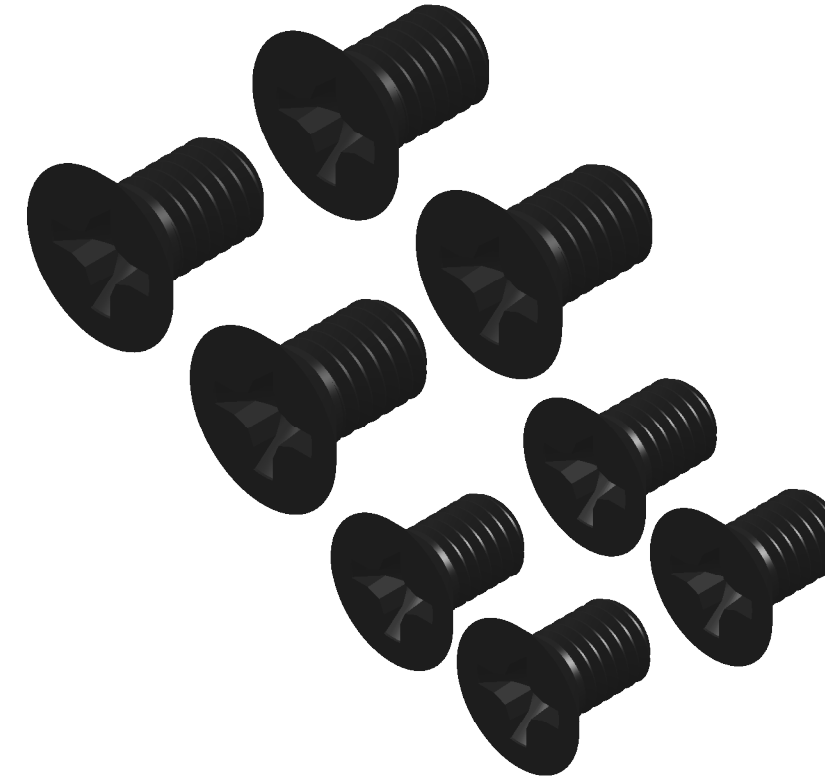


KDE DIRECT 82XX SERIES COMPONENTS
KDE8218XF-120 (HE)



KDE M10 PROPELLER SHAFT COVER ASSEMBLY
102XX/82XX/72XX SERIES
20MM EDITION, M3

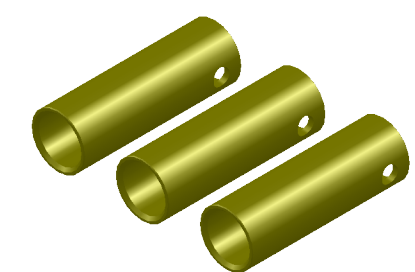
SOCKET HEAD CAP SCREWS
M3 X 0.5 X 14MM (4)
ALLOY-STEEL BLACK OXIDE, C12.9



MOUNTING HARDWARE

FLAT HEAD PHILLIPS MACHINE SCREWS
M6 X 1.0 X 10MM (4)
ALLOY-STEEL BLACK OXIDE, C12.9

FLAT HEAD PHILLIPS MACHINE SCREWS
M5 X 0.8 X 8MM (4)
ALLOY-STEEL BLACK OXIDE, C12.9

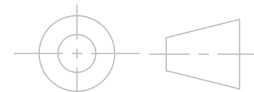


4.0MM BULLET CONNECTORS
24K, FEMALE SET (3)

UNLESS OTHERWISE SPECIFIED:
1. ALL DIMENSIONS APPLY BEFORE PLATING OR COATING.
2. REMOVE ALL BURRS, BREAK SHARP EDGES .020 IN MAX.

IMPERIAL

THIRD ANGLE PROJECTION



TOLERANCES: X. ± 0.040"
X.X ± 0.020"
X.XX ± 0.010"
X.XXX ± 0.005"
ANGULAR ± 1°

DESIGNED KDE DIRECT
DRAWN KDE DIRECT
DATE XX/XX/XXXX

TITLE KDE DIRECT 82XX COMPONENTS

SIZE PART NO. **C KDE82XX SERIES**

REV. **B**

DO NOT SCALE DRAWING

SCALE: 4:1 SHEET 1 OF 1