

**KDE DIRECT 72XX SERIES COMPONENTS V2**

**KDE7215XF-135**

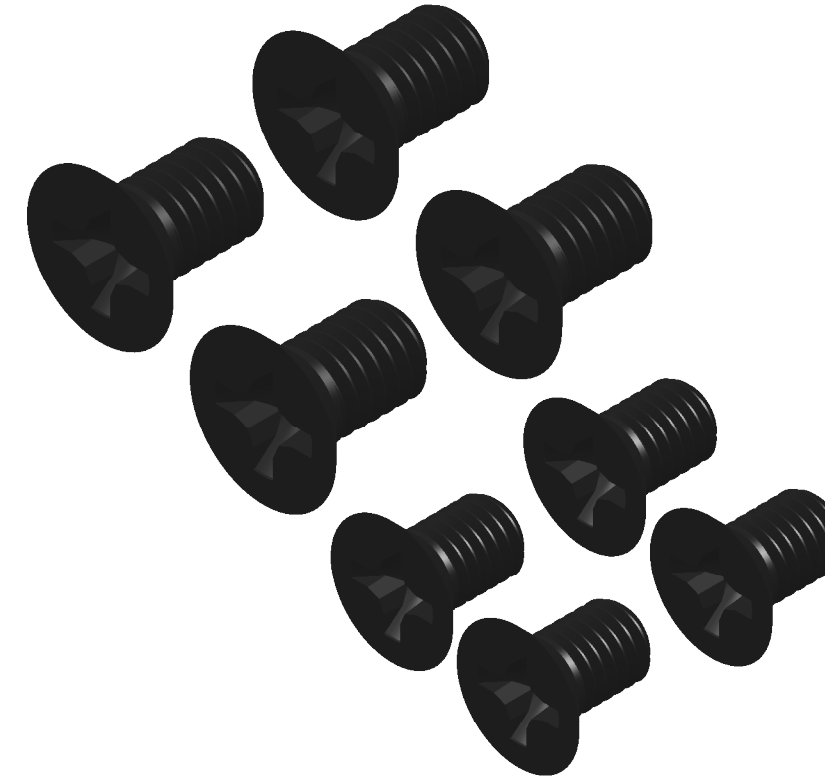
**KDE7208XF-110 (HE)**

**KDE7208XF-135 (HE)**



**KDE M10 PROPELLER SHAFT COVER ASSEMBLY  
102XX/82XX/72XX SERIES  
20MM EDITION, M3**

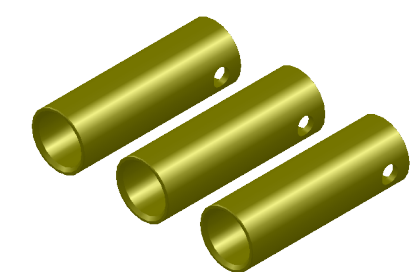
SOCKET HEAD CAP SCREWS  
M3 X 0.5 X 14MM (4)  
ALLOY-STEEL BLACK OXIDE, C12.9



**MOUNTING HARDWARE**

FLAT HEAD PHILLIPS MACHINE SCREWS  
M6 X 1.0 X 10MM (4)  
ALLOY-STEEL BLACK OXIDE, C12.9

FLAT HEAD PHILLIPS MACHINE SCREWS  
M5 X 0.8 X 8MM (4)  
ALLOY-STEEL BLACK OXIDE, C12.9



**4.0MM BULLET CONNECTORS  
24K, FEMALE SET (3)**

UNLESS OTHERWISE SPECIFIED:  
1. ALL DIMENSIONS APPLY BEFORE PLATING OR COATING.  
2. REMOVE ALL BURRS, BREAK SHARP EDGES .020 IN MAX.



TOLERANCES: X. ± 0.040"  
X.X ± 0.020"  
X.XX ± 0.010"  
X.XXX ± 0.005"  
ANGULAR ± 1°

DESIGNED	KDE DIRECT
DRAWN	KDE DIRECT
DATE	XX/XX/XXXX

DO NOT SCALE DRAWING

TITLE: **KDE DIRECT 72XX COMPONENTS V2**

SIZE PART NO. **C KDE72XX SERIES**

REV. **B**