

**KDE DIRECT 68XX COMPONENTS**  
**KDE6815XF-205**



**KDE PROP BRACKET**  
**ASSEMBLY 102XX/82XX/72XX/68XX**  
**20MM EDITION, M3**  
**BLACK EDITION**

SOCKET HEAD CAP SCREWS  
M3 X 0.5 X 15MM (4)  
ALLOY-STEEL BLACK OXIDE, C12.9

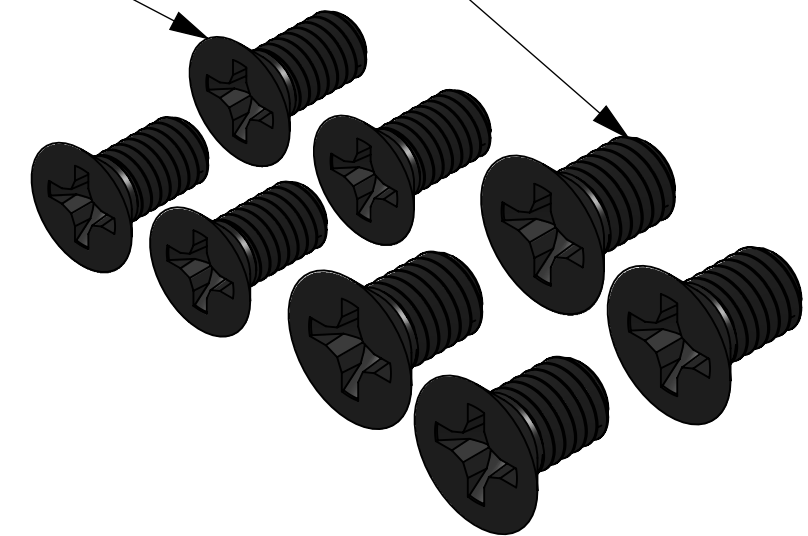


**KDE PROP BRACKET**  
**ASSEMBLY 62XX/52XX/42XX**  
**BLACK EDITION**

SOCKET HEAD CAP SCREWS  
M3 X 0.5 X 10MM (2)  
ALLOY-STEEL BLACK OXIDE, C12.9

FLAT HEAD PHILLIPS MACHINE SCREWS  
M5 X 0.8 X 8MM (4)  
ALLOY-STEEL BLACK OXIDE, C12.9

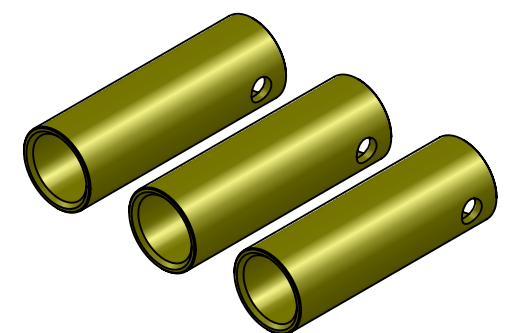
FLAT HEAD PHILLIPS MACHINE SCREWS  
M4 X 0.7 X 8MM (4)  
ALLOY-STEEL BLACK OXIDE, C12.9



**MOUNTING HARDWARE**

FLAT HEAD PHILLIPS MACHINE SCREWS  
M5 X 0.8 X 8MM (4)  
ALLOY-STEEL BLACK OXIDE, C12.9

FLAT HEAT PHILLIPS MACHINE SCREWS  
M4 X 0.7 X 8MM (4)  
ALLOY-STEEL BLACK OXIDE, C12.9



**4.0MM BULLET CONNECTORS**  
**24K, FEMALE SET (3)**

UNLESS OTHERWISE SPECIFIED:  
1. ALL DIMENSIONS APPLY BEFORE PLATING OR COATING.  
2. REMOVE ALL BURRS, BREAK SHARP EDGES .020 IN MAX.



TOLERANCES: X. ± 0.040"  
X.X ± 0.020"  
X.XX ± 0.010"  
X.XXX ± 0.005"  
ANGULAR ± 1°

DESIGNED KDE DIRECT  
DRAWN KDE DIRECT  
DATE XX/XX/XXXX

TITLE: KDE DIRECT 68XX COMPONENTS

SIZE PART NO. C KDE68XX SERIES

REV. A

DO NOT SCALE DRAWING

SCALE: 4:1 SHEET 1 OF 1