

KDE DIRECT 62XX SERIES COMPONENTS
KDE6213XF-185 (HE)



KDE M6 PROPELLER ADAPTER ASSEMBLY
62XX/52XX/42XX/40XX/35XX SERIES
20MM EDITION, RH THREAD

SOCKET HEAD CAP SCREWS
M3 X 0.5 X 8MM (4)
ALLOY-STEEL BLACK OXIDE, C12.9
6MM/8MM ADAPTER



KDE M6 PROPELLER ADAPTER ASSEMBLY
62XX/52XX SERIES
20MM EDITION, LH THREAD

SOCKET HEAD CAP SCREWS
M3 X 0.5 X 8MM (4)
ALLOY-STEEL BLACK OXIDE, C12.9
6MM/8MM ADAPTER



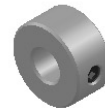
KDE PROPELLER BRACKET ASSEMBLY
62XX/52XX/42XX/40XX/35XX SERIES
BLACK EDITION

SOCKET HEAD CAP SCREWS
M3 X 0.5 X 10MM (2)
ALLOY-STEEL BLACK OXIDE, C12.9
4MM/6MM ADAPTER



MOUNTING HARDWARE

FLAT HEAD PHILLIPS MACHINE SCREWS
M5 X 0.8 X 8MM (4)
ALLOY-STEEL BLACK OXIDE, C12.9
FLAT HEAD PHILLIPS MACHINE SCREWS
M4 X 0.7 X 8MM (4)
ALLOY-STEEL BLACK OXIDE, C12.9



KDE PROPELLER SHAFT ADAPTER
62XX SERIES
4MM/10MM EDITION

SOCKET HEAD SET SCREW
M2.5 X 0.45 X 2.5MM (1)
ALLOY-STEEL BLACK OXIDE, C12.9



4.0MM BULLET CONNECTORS
24K, FEMALE SET (3)

UNLESS OTHERWISE SPECIFIED:
1. ALL DIMENSIONS APPLY BEFORE PLATING OR COATING.
2. REMOVE ALL BURRS, BREAK SHARP EDGES .020 IN MAX.



TOLERANCES:
X ± 0.040"
XX ± 0.020"
XXX ± 0.010"
XXXX ± 0.005"
ANGULAR ± 1°

DESIGNED KDE DIRECT
DRAWN KDE DIRECT
DATE XX/XX/XXXX

TITLE KDE DIRECT 62XX COMPONENTS

SIZE PART NO. C KDE62XX SERIES

REV. A

DO NOT SCALE DRAWING

SCALE: 4:1 SHEET 1 OF 1