

KDE DIRECT 52XX SERIES COMPONENTS

KDE5215XF-220 (HE)

KDE5215XF-330

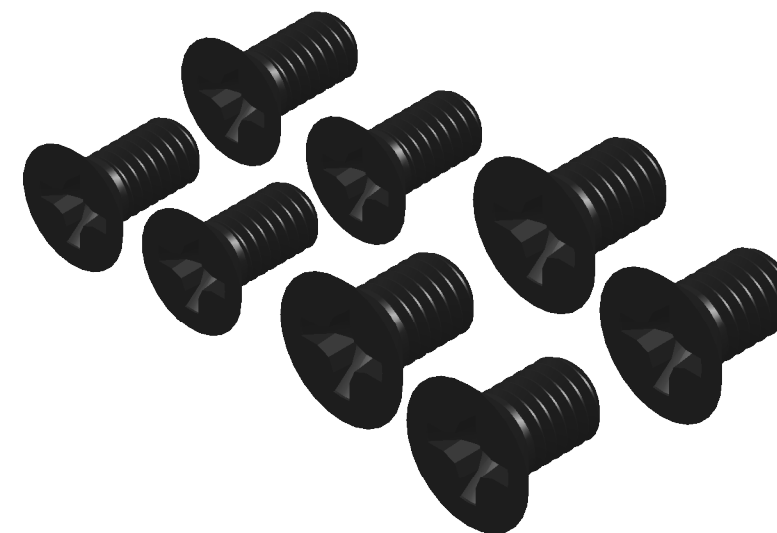
KDE5215XF-435



**KDE PROPELLER BRACKET ASSEMBLY
62XX/52XX/42XX/40XX/35XX SERIES
BLACK EDITION**

SOCKET HEAD CAP SCREWS
M3 X 0.5 X 10MM (2)
ALLOY-STEEL BLACK OXIDE, C12.9

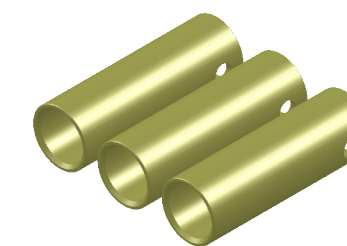
4MM/6MM ADAPTER



MOUNTING HARDWARE

FLAT HEAD PHILLIPS MACHINE SCREWS
M5 X 0.8 X 8MM (4)
ALLOY-STEEL BLACK OXIDE, C12.9

FLAT HEAD PHILLIPS MACHINE SCREWS
M4 X 0.7 X 8MM (4)
ALLOY-STEEL BLACK OXIDE, C12.9



**4.0MM BULLET CONNECTORS
24K, FEMALE SET (3)**

UNLESS OTHERWISE SPECIFIED:
1. ALL DIMENSIONS APPLY BEFORE PLATING OR COATING.
2. REMOVE ALL BURRS, BREAK SHARP EDGES .020 IN MAX.

IMPERIAL THIRD ANGLE PROJECTION

TOLERANCES:

X.	± 0.040"
X.X	± 0.020"
X.XX	± 0.010"
X.XXX	± 0.005"
ANGULAR	± 1°

DESIGNED	KDE DIRECT
DRAWN	KDE DIRECT
DATE	XX/XX/XXXX

DO NOT SCALE DRAWING

TITLE.	KDE DIRECT 52XX COMPONENTS	
SIZE	PART NO.	REV.
C	KDE52XX SERIES	B