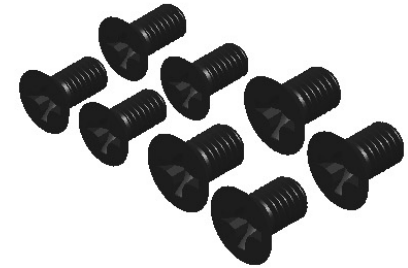


KDE DIRECT 52XX SERIES COMPONENTS

KDE5215XF-220 (HE)

KDE5215XF-330

KDE5215XF-435



**KDE M6 PROPELLER ADAPTER ASSEMBLY
62XX/52XX/42XX/40XX/35XX SERIES
20MM EDITION, RH THREAD**

SOCKET HEAD CAP SCREWS
M3 X 0.5 X 8MM (4)
ALLOY-STEEL BLACK OXIDE, C12.9
6MM/8MM ADAPTER

**KDE M6 PROPELLER ADAPTER ASSEMBLY
62XX/52XX SERIES
20MM EDITION, LH THREAD**

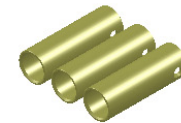
SOCKET HEAD CAP SCREWS
M3 X 0.5 X 8MM (4)
ALLOY-STEEL BLACK OXIDE, C12.9
6MM/8MM ADAPTER

**KDE PROPELLER BRACKET ASSEMBLY
62XX/52XX/42XX/40XX/35XX SERIES
BLACK EDITION**

SOCKET HEAD CAP SCREWS
M3 X 0.5 X 10MM (2)
ALLOY-STEEL BLACK OXIDE, C12.9
4MM/6MM ADAPTER

MOUNTING HARDWARE

FLAT HEAD PHILLIPS MACHINE SCREWS
M5 X 0.8 X 8MM (4)
ALLOY-STEEL BLACK OXIDE, C12.9
FLAT HEAD PHILLIPS MACHINE SCREWS
M4 X 0.7 X 8MM (4)
ALLOY-STEEL BLACK OXIDE, C12.9



**4.0MM BULLET CONNECTORS
24K, FEMALE SET (3)**

UNLESS OTHERWISE SPECIFIED:
1. ALL DIMENSIONS APPLY BEFORE PLATING OR COATING.
2. REMOVE ALL BURRS, BREAK SHARP EDGES .020 IN MAX.

IMPERIAL



TOLERANCES:
X ± 0.040"
XX ± 0.020"
XXX ± 0.010"
XXXX ± 0.005"
ANGULAR ± 1°

DESIGNED	KDE DIRECT
DRAWN	KDE DIRECT
DATE	XX/XX/XXXX

TITLE: KDE DIRECT 52XX COMPONENTS

SIZE PART NO. **C KDE52XX SERIES**

REV. **A**

DO NOT SCALE DRAWING

SCALE: 4:1 SHEET 1 OF 1