

**KDE DIRECT 42XX SERIES COMPONENTS V2**

**KDE4215XF-465**

**KDE4213XF-360 (HE)**



**KDE M6 PROPELLER ADAPTER ASSEMBLY**  
**62XX/52XX/42XX/40XX/35XX SERIES**  
**20MM EDITION, RH THREAD**

SOCKET HEAD CAP SCREWS  
 M3 X 0.5 X 8MM (4)  
 ALLOY STEEL BLACK-OXIDE, C12.9

6MM/8MM ADAPTER



**KDE MOTOR ADAPTER PLATE ASSEMBLY**  
**42XX/40XX/35XX SERIES**  
**BLACK EDITION**

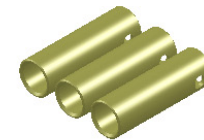
FLAT HEAD PHILLIPS MACHINE SCREWS  
 M4 X 0.7 X 8MM (4)  
 ALLOY-STEEL BLACK OXIDE, C12.9



**KDE PROPELLER BRACKET ASSEMBLY**  
**62XX/52XX/42XX/40XX/35XX SERIES**  
**BLACK EDITION**

SOCKET HEAD CAP SCREWS  
 M3 X 0.5 X 10MM (2)  
 ALLOY-STEEL BLACK OXIDE, C12.9

4MM/6MM ADAPTER



**3.5MM BULLET CONNECTORS**  
 24K, FEMALE SET (3)

UNLESS OTHERWISE SPECIFIED:  
 1. ALL DIMENSIONS APPLY BEFORE PLATING OR COATING.  
 2. REMOVE ALL BURRS, BREAK SHARP EDGES .020 IN MAX.



TOLERANCES:  
 X .0040"  
 XX .0020"  
 XXX .0010"  
 XXXX .0005"  
 ANGULAR ± 1°

DESIGNED KDE DIRECT  
 DRAWN KDE DIRECT  
 DATE XX/XX/XXXX

TITLE KDE DIRECT 42XX COMPONENTS V2

SIZE PART NO. C KDE42XX SERIES

REV. A

DO NOT SCALE DRAWING

SCALE: 4:1 SHEET 1 OF 1