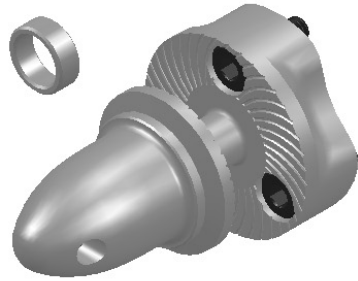


KDE DIRECT 35XX SERIES COMPONENTS

KDE3520XF-400

KDE3510XF-475

KDE3510XF-715



KDE M6 PROPELLER ADAPTER ASSEMBLY
35XX SERIES
17MM EDITION, RH THREAD

SOCKET HEAD CAP SCREWS
 M3 X 0.5 X 8MM (3)
 ALLOY STEEL BLACK-OXIDE, C12.9
 6MM/8MM ADAPTER



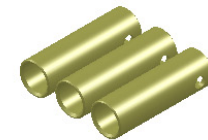
KDE MOTOR ADAPTER PLATE ASSEMBLY
35XX SERIES
CLEAR EDITION

FLAT HEAD PHILLIPS MACHINE SCREWS
 M4 X 0.7 X 8MM (4)
 ALLOY-STEEL ZINC-PLATED, C12.9



KDE PROPELLER BRACKET ASSEMBLY
35XX SERIES
CLEAR EDITION

SOCKET HEAD CAP SCREWS
 M3 X 0.5 X 10MM (2)
 ALLOY-STEEL BLACK OXIDE, C12.9
 4MM/6MM ADAPTER



3.5MM BULLET CONNECTORS
 24K, FEMALE SET (3)

UNLESS OTHERWISE SPECIFIED:
 1. ALL DIMENSIONS APPLY BEFORE PLATING OR COATING.
 2. REMOVE ALL BURRS, BREAK SHARP EDGES .020 IN MAX.



TOLERANCES:
 X ± 0.040"
 XX ± 0.020"
 XXX ± 0.010"
 XXXX ± 0.005"
 ANGULAR ± 1°

DESIGNED KDE DIRECT
 DRAWN KDE DIRECT
 DATE XX/XX/XXXX

TITLE KDE DIRECT 35XX COMPONENTS

SIZE PART NO. C KDE35XX SERIES

REV. A

DO NOT SCALE DRAWING

SCALE: 4:1 SHEET 1 OF 1