

KDE DIRECT 28XX SERIES COMPONENTS

KDE2814XF-515

KDE2814XF-775



**KDE M6 PROPELLER ADAPTER ASSEMBLY
28XX SERIES
15MM EDITION, RH THREAD**

SOCKET HEAD CAP SCREWS
M3 X 0.5 X 8MM (3)
ALLOY-STEEL BLACK OXIDE, C12.9



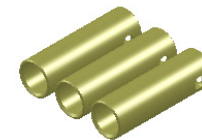
**KDE MOTOR ADAPTER PLATE ASSEMBLY
28XX SERIES
CLEAR EDITION**

FLAT HEAD SOCKET HEAD CAP SCREWS
M3 X 0.5 X 6MM (4)
ALLOY-STEEL ZINC-PLATED, C12.9



**KDE PROPELLER BRACKET ASSEMBLY
28XX SERIES
CLEAR EDITION**

SOCKET HEAD CAP SCREWS
M3 X 0.5 X 8MM (2)
ALLOY-STEEL BLACK OXIDE, C12.9
4MM/6MM ADAPTER



**3.5MM BULLET CONNECTORS
24K, FEMALE SET (3)**

UNLESS OTHERWISE SPECIFIED:
1. ALL DIMENSIONS APPLY BEFORE PLATING OR COATING.
2. REMOVE ALL BURRS, BREAK SHARP EDGES .020 IN MAX.

IMPERIAL

THIRD ANGLE PROJECTION



TOLERANCES:
X ± 0.040"
XX ± 0.020"
XXX ± 0.010"
XXXX ± 0.005"
ANGULAR ± 1°

DESIGNED	KDE DIRECT
DRAWN	KDE DIRECT
DATE	XX/XX/XXXX

TITLE: KDE DIRECT 28XX COMPONENTS

SIZE PART NO. **C KDE28XX SERIES**

REV. **A**

DO NOT SCALE DRAWING

SCALE: 4:1 SHEET 1 OF 1