

**KDE DIRECT 23XX-FPV SERIES COMPONENTS**  
**KDE2315XF-2050**



**KDE M6 PROPELLER ADAPTER ASSEMBLY**  
**23XX SERIES**  
**12MM EDITION, RH THREAD**

BUTTON HEAD SOCKET HEAD CAP SCREWS  
M3 X 0.5 X 5MM (4)  
ALLOY-STEEL BLACK OXIDE, C12.9



**KDE M5 PROPELLER ADAPTER ASSEMBLY**  
**23XX SERIES**  
**12MM EDITION, RH THREAD**



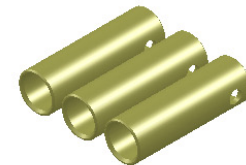
**KDE PROPELLER BRACKET ASSEMBLY**  
**23XX SERIES**  
**BLACK EDITION**

BUTTON HEAD SOCKET HEAD CAP SCREWS  
M3 X 0.5 X 8MM (2)  
ALLOY-STEEL BLACK OXIDE, C12.9  
4MM/6MM ADAPTER



**MOUNTING HARDWARE**

FLAT HEAD SOCKET HEAD CAP SCREWS  
M3 X 0.5 X 5MM (4)  
ALLOY-STEEL BLACK OXIDE, C12.9



**3.5MM BULLET CONNECTORS**  
**24K, FEMALE SET (3)**

UNLESS OTHERWISE SPECIFIED:  
1. ALL DIMENSIONS APPLY BEFORE PLATING OR COATING.  
2. REMOVE ALL BURRS, BREAK SHARP EDGES .020 IN MAX.



TOLERANCES.

X	± 0.040"
X.X	± 0.020"
X.XX	± 0.010"
X.XXX	± 0.005"
ANGULAR	± 1°

DESIGNED	KDE DIRECT
DRAWN	KDE DIRECT
DATE	XX/XX/XXXX

TITLE: KDE DIRECT 23XX-FPV COMPONENTS

SIZE PART NO. **C KDE23XX-FPV SERIES**

REV. **A**

DO NOT SCALE DRAWING

SCALE: 4:1 SHEET 1 OF 1