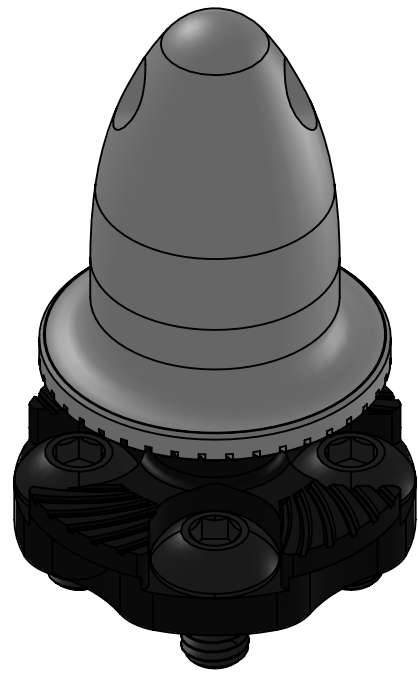


**KDE DIRECT 2315XF COMPONENTS**

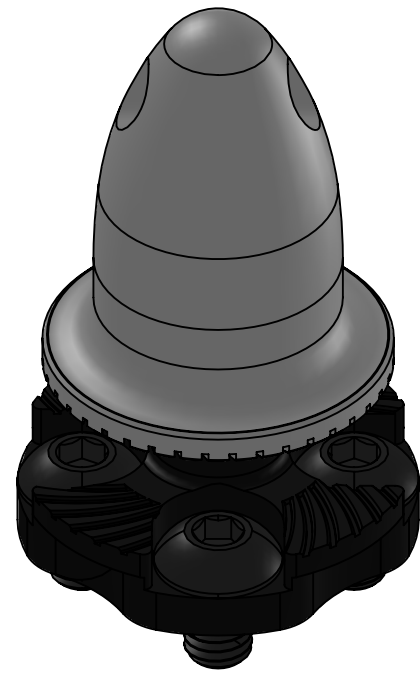
**KDE2315XF-885**

**KDE2315XF-965**



**KDE M6 PROP ADAPTER  
ASSEMBLY 23XX RH**

SOCKET HEAD BUTTON CAP SCREWS  
M3 X 0.5 X 5MM (4)  
ALLOY-STEEL, BLACK OXIDE C12.9



**KDE M6 PROP ADAPTER  
ASSEMBLY 23XX LH**

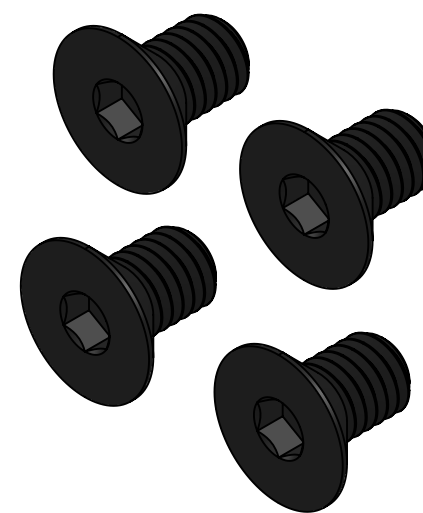
SOCKET HEAD BUTTON CAP SCREWS  
M3 X 0.5 X 5MM (4)  
ALLOY-STEEL, BLACK OXIDE C12.9



**KDE PROP BRACKET  
ASSEMBLY 23XX**

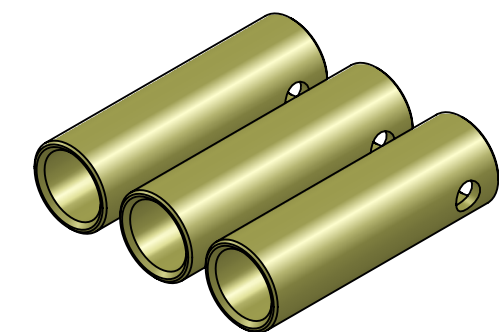
BUTTON HEAD SOCKET HEAD CAP SCREWS  
M3 X 0.5 X 8MM (2)  
ALLOY-STEEL, BLACK OXIDE C12.9

**4MM/6MM ADAPTER**



**MOUNTING HARDWARE**

FLAT HEAD SOCKET HEAD CAP SCREWS  
M3 X 0.5 X 5MM (4)  
ALLOY-STEEL BLACK OXIDE, C12.9



**3.5MM BULLET CONNECTORS  
24K, FEMALE SET (3)**

UNLESS OTHERWISE SPECIFIED:  
1. ALL DIMENSIONS APPLY BEFORE PLATING OR COATING.  
2. REMOVE ALL BURRS, BREAK SHARP EDGES .020 IN MAX.



TOLERANCES: X. ± 0.040"  
X.X ± 0.020"  
X.XX ± 0.010"  
X.XXX ± 0.005"  
ANGULAR ± 1°

DESIGNED	KDE DIRECT
DRAWN	KDE DIRECT
DATE	XX/XX/XXXX

DO NOT SCALE DRAWING

TITLE: **KDE DIRECT 2315XF COMPONENTS**

SIZE PART NO. **C KDE2315XF SERIES**

REV. **B**