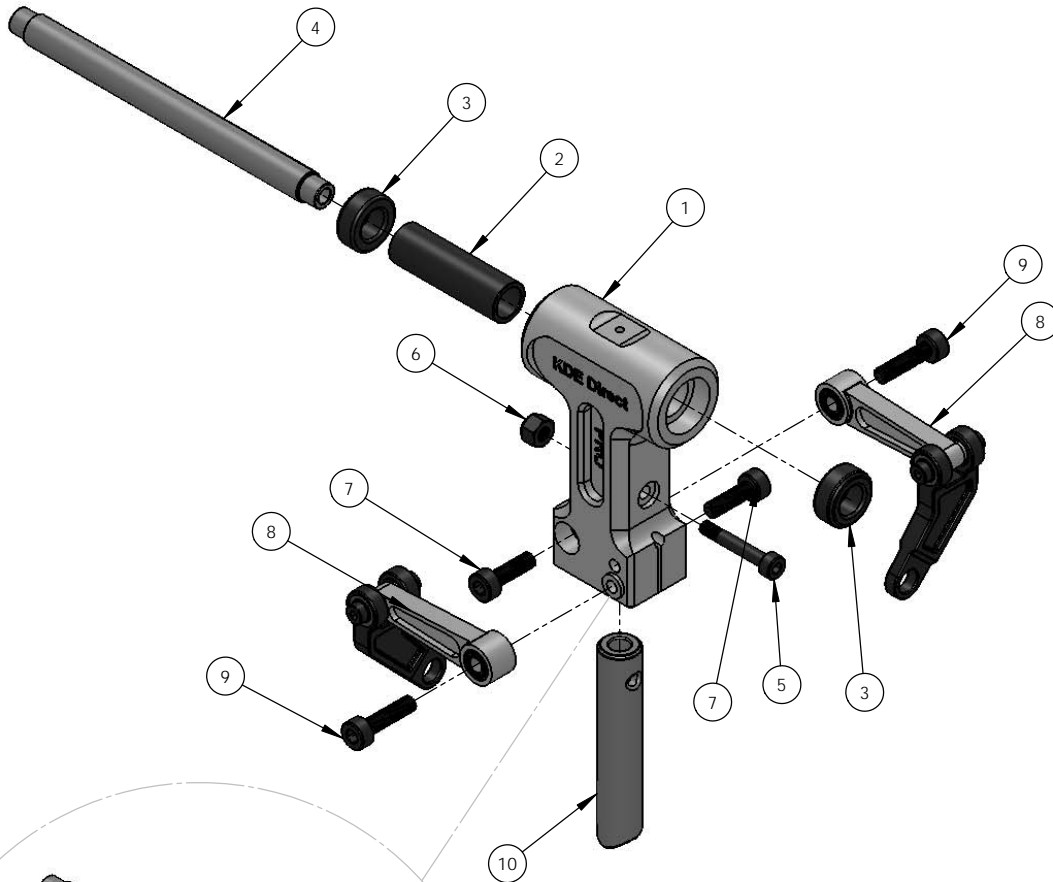


TREX500PRO SERIES FLYBARLESS MAIN ROTOR HOUSING AT500P-MRHFB (AL 6061-T6)



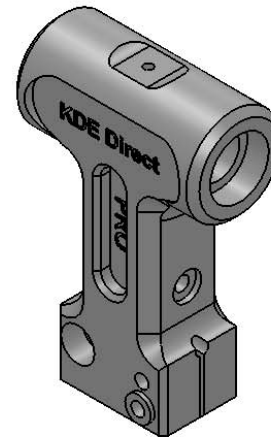
ITEM NO.	DESCRIPTION	QTY.
1	KDE DIRECT TREX 500 PRO SERIES FLYBARLESS MAIN ROTOR HOUSING	1
2	TREX 500 SERIES FEATHERING SHAFT SLEEVE (PROVIDED IN ORIGINAL KIT)	1
3	TREX 500 SERIES RUBBER DAMPER (PROVIDED IN ORIGINAL KIT)	2
4	TREX 500 SERIES FEATHERING SHAFT (PROVIDED IN ORIGINAL KIT)	1
5	M2.5 x 0.45 x 16MM SOCKET HEAD COLLAR CAP SCREW (PROVIDED IN ORIGINAL KIT)	1
6	M2.5 NYLON LOCKNUT (PROVIDED IN ORIGINAL KIT)	1
7	M3 x 0.5 x 10MM SOCKET HEAD CAP SCREW	2
8	TREX 500 SERIES FLYBARLESS WASHOUT CONTROL ARM ASSEMBLY (PROVIDED IN ORIGINAL KIT OR SOLD SEPARATELY)	2
9	M3 x 0.5 x 12MM SOCKET HEAD CAP SCREW	2
10	TREX 500 PRO SERIES MAIN SHAFT (PROVIDED IN ORIGINAL KIT)	1

NOTE: THE FLYBARLESS MAIN ROTOR HOUSING ENCOMPASSES THE LATEST TECHNOLOGIES FOR OPTIMUM SETUP OF THE FLYBARLESS MECHANICS. WITH DIRECT MOUNTED WASHOUT ARMS AND A SOLID M3 CLAMP DESIGN OF THE ROTOR HEAD TO THE MAIN SHAFT, THE NEW DESIGN IS CAPABLE OF PROVIDING THE HIGHEST-PRECISION CONTROL POSSIBLE FOR THE FLYBARLESS ELECTRONICS.

THE NEW TREX 500 PRO SERIES LOWERS THE ROTOR HEAD AN ADDITIONAL 7.5MM IN COMPARISON TO THE ORIGINAL TREX 500 DESIGN, PROVIDING FASTER/CRISPER ROLLS AND INCREASED 3D FLIGHT RESPONSE.

MAKE SURE TO USE LOCTITE 243 (BLUE) OR EQUIVALENT ON ALL METAL-TO-METAL FASTENERS TO PREVENT LOOSENING DURING FLIGHT. TO ACHIEVE THE BEST POSSIBLE SETUP AND PERFECT ALIGNMENT OF THE FLIGHT MECHANICS, IT IS RECOMMENDED TO USE THE FOLLOWING ALIGN FLYBARLESS COMPONENTS:

TREX 500 PRO SERIES
MAIN SHAFT: H50156, TREX 500PRO MAIN SHAFT
FLYBARLESS GRIPS: H50150/H50152, TREX 500FL MAIN ROTOR GRIP SET
WASHOUT ARMS: H50180, TREX 500FL METAL CONTROL ARM
LINKAGES: H50173, TREX 500EFL PRO LINKAGE ROD SET



www.KDEDirect.com

www.KDEDirect.com
AT500P-MRHFB