



CLEAN WITH CONFIDENCE™



OPERATION GUIDE

2.5-Gallon Battery Powered Sanitation
Electrostatic Backpack Sprayer

VOLT 2.5G

XCEAHX



TABLE OF CONTENTS



4	WARNINGS
5	SAFETY
8	REGISTER YOUR SPRAYER
9	SPRAYER CAPABILITIES
10	WHAT'S IN THE BOX

CLEAN WITH CONFIDENCE™



12	ASSEMBLY & SPRAYING
18	BATTERY CHARGING
20	PARTS & ACCESSORIES
22	TROUBLESHOOTING
24	WARRANTY POLICY

ATTENTION

WARNING



Please read the following information carefully. User must read and understand entire manual before operating this sprayer. Improper use or failure to follow instructions could lead to sprayer failure and possible serious injuries.

- Never use this sprayer with liquids such as gasoline, ethanol, methanol, acid, caustic, or any other flammable, pressure, heat, or gas producing chemicals.
- Always read and follow chemical manufacturer's instructions before use with this sprayer as some chemicals may be hazardous when used with this sprayer.
- Never leave chemicals or solutions sitting in your sprayer after using.
- After using sprayer with chemicals, it is important to rinse the tank and flush the sprayer with fresh water for 3-5 minutes to ensure residual chemicals in the gun, tank, pump, and hose are cleaned out
- Read and follow all instructions and cautions on label of products used in this sprayer.
- Do not store your sprayer in extremely high temperatures. Heat can lead to the build-up of pressure within the sprayer, resulting in a possible explosion.
- Do not try to make modifications to the sprayer. Always use X-Stream Clean® branded replacement parts from the manufacturer.
- Do not use batteries that are wet or have been damaged.
- Inspect sprayer hose, power knob, and gun for damage or loose connections before each use.
- Do not lift or carry the sprayer by the hose or gun. Only carry by the ComfortStraps™ handle.
- Only spray outdoors when the air is calm (no wind or air movement) to prevent chemical spray from drifting into unintended areas.
- Keep sprayer and all chemicals out of the reach of children.
- **Remove chemicals and thoroughly clean the sprayer after each use. Failure to clean the sprayer may cause contamination of subsequent applications, will cause premature spray wear, and void the sprayer warranty.**

NOTES

- The sprayer may have residual water in it when first opened. This is due to quality testing every sprayer undergoes before leaving our factory.
- Some parts may be located under the tank lid when first assembling the sprayer.
- **THIS SPRAYER IS DESIGNED TO OPERATE WITH ONLY X-Stream Clean® BRANDED BATTERIES. ANY OTHER BATTERIES COULD CAUSE SERIOUS HARM OR INJURY TO THE OPERATOR AND SERIOUS DAMAGE TO THE SPRAYER.**

WARNING

This product contains chemicals, including lead, known to the state of California to cause birth defects and other reproductive harm. This product is designed to apply chemicals that may be harmful and could cause serious personal injury if inhaled or brought into contact with the user.

SAFETY & PRECAUTION



Please read the following information carefully. User must read and understand entire manual before operating this sprayer. Improper use or failure to follow instructions could lead to sprayer failure and possible serious injuries.

SAFETY

- Use the sprayer and accessories in accordance with these instructions, taking into consideration the working conditions and the work to be performed. Use of this sprayer for applications that it was not intended for could result in a hazardous situation.
- Keep handles and lift points dry, clean and free from oil and grease. Slippery handles and lift points do not allow for safe handling and control of the sprayer.
- Risk of fire or explosion: Never use this sprayer with liquids such as gasoline, ethanol, methanol, or any other flammable or gas producing chemicals. Do not use sprayer around sparks, flame, or smoke.
- Failure to adhere to these instructions may cause the chemicals to ignite, resulting in potential injury and damage to property.
- To reduce the risk of fire, personal injury, and product damage from a short circuit, never immerse the sprayer, battery, or charger in fluids. Do not place or store sprayer where it could fall or be pulled into a tub or sink. Corrosive or conductive fluids, such as seawater, certain industrial chemicals, and bleach or bleach containing products, etc., can cause a short circuit.
- Electric shock hazard: Never spray toward electrical outlets.
- Spray area must be well ventilated to avoid hazardous fume build-up. Always refer to the product label of the chemical being used for safety instructions and proper use practices.
- Avoid spraying on windy days. Spraying in windy conditions could cause chemicals to be blown onto persons, plants, or objects that are not intended to be sprayed.
- Do not store chemicals in the tank. Chemicals can degrade seals and hoses. Drain and clean sprayer after each use. Failure to do so may void the sprayer warranty.
- Remove gloves before handling the battery pack. Chemicals may be damaging to plastics.
- Thoroughly inspect the interior, exterior, and all components of the sprayer before each use. Check for cracked and deteriorated hoses, leaks, clogged nozzles and missing or damaged parts. If damaged, ensure the sprayer is repaired before use. Many accidents are caused by poor maintenance.
- Always remove the battery pack from the sprayer before performing any maintenance, storing or draining of the sprayer.
- Do not eat or smoke while handling or operating the sprayer. Refer to the product label of the chemical being used for user safety practices.
- Do not use the battery compartment to store the battery.
- **Always use common sense and be cautious when using the sprayer.** It is not possible to anticipate every situation that could result in a dangerous outcome. Do not use this sprayer if you do not understand these operating instructions or if you feel the work is beyond your capability.

SAFETY & PRECAUTION



Please read the following information carefully. User must read and understand entire manual before operating this sprayer. Improper use or failure to follow instructions could lead to sprayer failure and possible serious injuries.

OPERATING

- Do not allow familiarity with products to make you careless. Remember that a single moment of carelessness is sufficient to cause serious injury.
- Always wear eye protection with side shields when handling or operating this sprayer. Failure to do so could result in serious injury from chemical contact or flying dirt or debris.
- The Lithium-ion battery pack can be used in temperatures down to 32°F. When operating in cold temperatures, put the battery pack in the battery compartment and use the sprayer in a light duty application. After about a minute the battery pack will warm up and begin operating normally.
- Always use the correct power setting for your application. Using the correct PSI and flow-rate will result in a safer and more thorough treatment. For calibration resources please contact X-Stream Clean® technical support. (Note: Always refer to local, state, and federal laws and regulations regarding your application.)
- Do not use the sprayer if the power switch is not functioning correctly. Any power tool that cannot be controlled with the switch is dangerous and must be repaired.
- Remove battery before making any adjustments, changing accessories, or storing the sprayer. Disconnect the sprayer from the power source by removing the battery pack. These preventative safety measures reduce the risk of starting the sprayer accidentally.

STORING

- Store sprayer out of reach of children and do not allow persons unfamiliar with the power tool or these instructions to operate the sprayer. Power tools are dangerous in the hands of untrained users.
- Maintain sprayers and accessories. Check for misalignment or binding of moving parts, breakage of parts and any other condition that may affect sprayer operation.



When using chemicals, always wear protective clothing, including respiratory masks, gloves, eye protection, etc.



Do not dispose of Lithium-ion batteries with household waste; recycle where proper facilities exist.

DO NOT RETURN SPRAYER TO STORE, if you experience problems or have questions contact our Customer Support Center, M-F 9am-5pm, EST at +1 803.339.2500, or email: info@xstreamclean.com, or find more information at xstreamclean.com/troubleshoot.

SAFETY & PRECAUTION



Please read the following information carefully. User must read and understand entire manual before operating this sprayer. Improper use or failure to follow instructions could lead to sprayer failure and possible serious injuries.

WORK AREA

- Keep work area clean and well lit. Cluttered or dark areas invite accidents.
- Do not operate sprayer in explosive environments, such as in the presence of flammable liquids, gases or dust. Power tools can create sparks which may ignite the dust or fumes.
- Keep children and bystanders away while operating the sprayer. Distractions can cause you to lose control.

ELECTRICAL

- Avoid body contact with earthed or grounded surfaces, such as pipes, radiators, ranges and refrigerators. There is an increased risk of electric shock if your body is earthed or grounded.
- Do not expose sprayer to rain or wet conditions. Water entering the electrical compartment of the sprayer will increase the risk of electric shock.
- Do not expose to rain; store indoors.

PERSONAL

- Stay alert, watch what you are doing and use common sense when operating the sprayer. A moment of inattention while operating power tools may result in serious personal injury.
- Use personal protective equipment. Always wear eye protection. Protective equipment such as a respiratory mask, non-skid safety shoes, hard hat or hearing protection used for appropriate conditions will reduce the chance of personal injuries.
- Prevent unintentional starting. Ensure the switch is in the off-position before connecting the power source (battery pack), picking up, or carrying the sprayer.
- Do not overreach. Keep proper footing and balance at all times. This enables better control of the sprayer in unexpected situations.
- Dress properly. Do not wear loose clothing or jewelry. Keep your hair and clothing away from moving parts. Loose clothes, jewelry or long hair can be caught in moving parts.
- Do not let familiarity gained from frequent use of the sprayer allow you to become complacent and ignore tool safety principles. A careless action can cause severe injury within a fraction of a second.

PLEASE NOTE

- To reduce static electricity buildup, consider wearing our Electrostatic Discharge (ESD) Grounded Foot Strap - XCAAKJ. See page 23.

REGISTER YOUR SPRAYER!

To take advantage of the 1-year Limited Warranty from WESSOL, LLC.
Register your sprayer at the website below:

xstreamclean.com/register

LET'S
GET
SPRAYING!

Please read and follow this manual carefully to ensure that you get the most out of your new sprayer. If you need assistance with the assembly or operation of your sprayer, please don't hesitate to contact WESSOL via the support methods below:

xstreamclean.com

info@xstreamclean.com

+1 803.339.2500

WHAT YOUR SPRAYER IS CAPABLE OF

The X-Stream Clean® Volt™ 2.5-Gallon electrostatic backpack sprayer is a highly efficient battery powered backpack sprayer for the toughest cleaning, sanitation, and decontamination jobs.

Introducing the all-new Volt™ 2.5-Gallon Electrostatic Backpack sprayer by X-Stream Clean®! Designed to make sanitation & decontamination projects faster and easier, the Volt™ can spray for up to 6 hours with a lightweight spray gun. Simply fill up your sanitizing solution in the backpack and strap on the ComfortStraps™ to start spraying!

Scan the QR code to view the most updated manual online!



or visit xstreamclean.com/operation-guides

X-STREAM CLEAN® VOLT™ 2.5-GALLON ELECTROSTATIC SPECIFICATIONS

Model Number	XCEAHX	Polarity	Positive Ions
Gun	12V Grounded Electrostatic	Pump Type	Diaphragm
Battery	18V / 5.2Ah Lithium-Ion	Pressure	85 psi with included nozzles
Battery Charger	21V/2.5A	Spray Distance	Up to 8 feet
Coverage per Charge	Up to 40,000 ft ²	Tank Capacity	2.5 gallons
Battery Cycle Life	1000 cycles	Seals	Viton™
Spray Time	Up to 6 hours <small>* (Up to 4 hours on Turbo Boost™ Mode)</small>	Pump Life	1000 hours

WHAT'S IN THE BOX





1. **ELECTROSTATIC SPRAY GUN**
PART NUMBER: XCAAHT



2. **TANK LID**
PART NUMBER: XCRAGV



3. **2.5G/10L VOLT™ TANK**
PART NUMBER: XCRAJL



4. **TANK STRAINER**
PART NUMBER: FZRABW



5. **COMFORTSTRAPS™**
PART NUMBER: XCAAKK



6. **ELECTROSTATIC CHARGE LINE & HOSE ASSEMBLY**
PART NUMBER: XCRAJH



7. **18V/5.2AH LITHIUM-ION BATTERY**
PART NUMBER: FZAAEM



8. **21V/2.5A BATTERY CHARGER**
PART NUMBER: FZAAEL



9. **NOZZLE WRENCH**
PART NUMBER: XCAAJG



10. **40-MICRON STAINLESS-STEEL MISTING NOZZLE**
PART NUMBER: XCAAKF



11. **80-MICRON STAINLESS-STEEL MISTING NOZZLE**
PART NUMBER: XCAAKG



12. **120-MICRON STAINLESS-STEEL MISTING NOZZLE**
PART NUMBER: XCAA KH

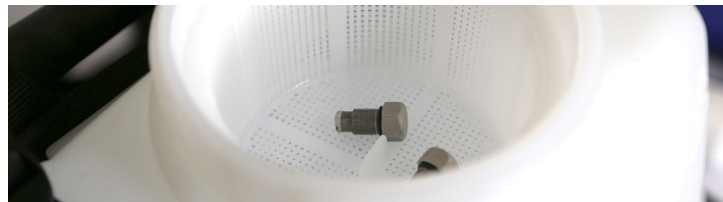
STEP 1

ASSEMBLING YOUR SPRAYER

A).

Before you begin, open the tank lid (2) and remove the 40-micron misting nozzle (10), 120-micron misting nozzle (12) and nozzle wrench (9) from the tank strainer.

**The 80-micron misting nozzle is pre-installed in the gun*



B).

Bring the ComfortStraps™ (5) to the bottom of the tank (3). Secure lower strap clips to the tank loops near the bottom of the tank. Repeat on other side.

C).

Next, slide the adjustable strap through the top tank loop. Continue by sliding the strap over and under the buckle fitting. Lightly tug at the strap to make sure it's secure. Repeat on other side.



STEP 1

ASSEMBLING YOUR SPRAYER

D).

Connect the electrostatic hose (6) to tank by lining up the male to female connection on the tank. Insert, then secure fitting by tightening the blue external cap. Repeat connection process for electrostatic hose to gun.



E).

Take the electrostatic gun (1) and attach it to the threaded fitting on the end of the hose (6). Tighten the fitting to ensure the gasket properly seals the connection.

F).

Place any unused nozzles and nozzle washer into the small accessory pouch until ready to spray.



STEP 2

PREPARING TO SPRAY

A).

Fully charge the battery (7) before the first operation. Indicator lights will flash as the battery is charging. In a separate container, prepare the solution you want to spray according to the manufacturer's instructions. Open the tank and carefully pour the solution through the tank strainer. Securely tighten the tank lid.



B).

Determine the nozzle you want to use (see below). To remove the current nozzle, use the nozzle wrench (9) by fitting the 12mm hex socket over the nozzle and rotate until removed.

- | | |
|-----------------------|-------------------|
| 11) 40-Micron nozzle | ~ 4min Dwell Time |
| 12) 80-Micron nozzle | ~ 5min Dwell Time |
| 13) 120-Micron nozzle | ~ 8min Dwell Time |

C).

Turn pump on by flipping switch on side of unit.

- | | Indicates Pump is On
- O | Indicates Pump is Off



STEP 2.

PREPARING TO SPRAY.



D).

To activate electrostatic, press red button. Once illuminated, red light indicates the electrostatic feature is on. To toggle on/off press once.

To turn on Turbo-Boost™ Fan, flip the switch on the side of the gun. Wait until you hear fan. There are 3 spray distance capabilities.

- O | Close Spray - Turbo-Boost™ Mode Off
- | | Medium Spray - Low Turbo-Boost™ Mode
- || | Far Spray - High Turbo-Boost™ Mode

Begin spraying by squeezing the black spray trigger on the handle of the spray gun.

STEP 3

AFTER YOU FINISH SPRAYING

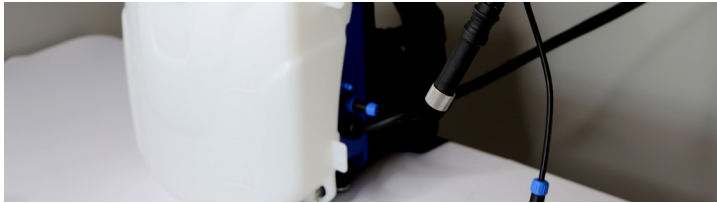
A).

Dispose of extra liquid/chemical based on manufacturer's instructions. Rinse out any residual solution in the spray tank with warm, soapy water. Then spray fresh water through the sprayer for 3 to 5 minutes to completely clear the tank, pump, gun, wand, and any used nozzles of chemicals.



B).

Disconnect the hose from the spray gun and let the hose hang down towards the ground in order to drain the hose of any liquid.



C).

Dry the sprayer tank and clear the nozzle of any buildup.



STEP 3

AFTER YOU FINISH SPRAYING

D).

Store the sprayer in a clean, dry, and shaded location to protect it from extreme heat or frost.

*

For long-term storage, regular charging of the battery is required to maximize battery life. Check the battery level using the indicator lights every 4 weeks. Recharge the battery if it falls below 3 bars. Do not allow the battery to fully discharge.



Proper sprayer maintenance is crucial to ensure the extended life and performance of your sprayer. Many spray materials can harden if left in the sprayer, causing clogs in the nozzle or hose. Gasoline should never be used to clean out your sprayer.

CHARGING BATTERY



Please read the following information carefully. User must read and understand entire manual before operating this sprayer. Improper use or failure to follow instructions could lead to sprayer failure and possible serious injuries.

These batteries have been designed to provide maximum trouble-free life. However, like all batteries, they will eventually wear out. Do not disassemble battery pack and attempt to replace the batteries. Handling of these batteries especially when wearing rings or jewelry could result in serious burns.

- Recharge only with the charger specified by the manufacturer. A charger that is suitable for one type of battery pack may create a risk of fire when used with another batter pack.
- Only use the battery pack specifically designated for the particular sprayer being used. Use of any other battery packs may create a risk of injury and fire.
- When battery pack is not in use, keep it away from other metal objects like paper clips, coins, keys, nails, screws or other small metal objects that can make a connection from one terminal to another. Shorting the battery terminals together may cause burns or fires.
- If the battery is damaged, liquid can be ejected from the battery; avoid contact. ***If contact accidentally occurs, flush with water. If liquid contacts eyes, immediately seek medical help.***
- Liquid ejected from the battery may cause irritation or burns.
- Do not use a battery pack or sprayer that is damaged or modified. Damaged or modified batteries may exhibit unpredictable behavior resulting in fire, explosion or risk of injury.
- Do not expose a battery pack or sprayer to fire or excessive temperature. Exposure to fire or temperature above 265°F (130°C) may cause explosion.
- Follow all charging instructions and do not charge the battery pack outside the temperature range specified in the instructions. Charging improperly or in a temperature outside the specified range may damage the battery and increase the risk of fire.

STORING BATTERY PACK LONGER THAN 30 DAYS

- Store the battery pack where the temperature is below 80°F and away from moisture.
- Store the battery pack in a 30%-50% charged condition.
- For long-term storage, regular charging of the battery is required to maximize battery life. Check the battery level using the indicator lights every 4 weeks. Recharge the battery if it falls below 3 bars. Do not allow the battery to fully discharge.

CHARGING

THE BATTERY



Please read the following information carefully. User must read and understand entire manual before operating this sprayer. Improper use or failure to follow instructions could lead to sprayer failure and possible serious injuries.

BATTERY RECYCLING PREPARATION

- To preserve natural resources, please recycle or dispose of the batteries properly.
- This product contains Lithium-ion batteries. Local, state or federal laws may prohibit disposal of lithium-ion batteries in ordinary trash. Consult your local waste authority for information regarding available recycling and/or disposal options.

LITHIUM-ION BATTERY PACKS

- Lithium-ion batteries deliver fade free power for their entire run time. Lithium-ion batteries will not gradually lose power due to decreasing battery charge. Instead, power from the battery pack will drop from full to zero once the full charge has been drained from the battery. Once this happens, recharging of the battery is required. It is not necessary to drain the battery pack completely before recharging.

BATTERY PACK PROTECTION FEATURES

- Lithium-ion battery packs are designed with features that protect the lithium-ion cells and maximize battery life. If the sprayer stops during use, release the trigger to reset and resume operation. If the sprayer still doesn't work, the battery needs to be recharged.

If after 2 hours during the charging process, none of the LEDs are lit, remove the battery pack from the charger to avoid damaging the product. DO NOT insert another battery. Contact Customer Support for instruction on replacing the battery. M-F 9am-5pm, EST at +1 803.339.2500, or email: info@xstreamclean.com.

ACCESSORY & REPLACEMENT PARTS



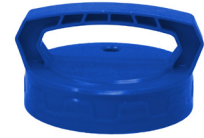
XCRAJL
2.5-Gallon/10-Liter
Tank Replacement



XCAAHT
Electrostatic Spray Gun
with Turbo-Boost™ Fan



FZRABW
Tank Strainer



XCRAJL
Tank Lid



FZAAEM
18V/5.2Ah Battery



FZAAEL
21V/2.5Ah Battery Charger



XCAAKK
2.5G ComfortStraps™



FZRAGL
Pump Inlet Filter

ACCESSORY & REPLACEMENT PARTS



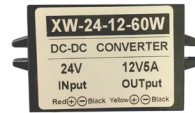
XCRAJH

Electrostatic Charge Line
& Hose Assembly



XCRAJF

X-Stream Clean® Volt™
2.5G Pump



XCRAJK

DC-to-DC
Voltage Converter



XCAAKJ

ESD Grounded Foot Strap



XCAAJG

Nozzle Wrench



XCAAKF

40-Micron Stainless-Steel
Misting Nozzle



XCAAKG

80-Micron Stainless-Steel
Misting Nozzle



XCAAKH

120-Micron Stainless-Steel
Misting Nozzle

TROUBLESHOOT YOUR SPRAYER

PROBLEM	POSSIBLE REASON(S)	SOLUTION
Sprayer is not turning on and there is no sound coming from the sprayer	Dead battery	Charge the battery. If the battery will not charge, test the charger or call Support at +1 803.339.2500 for a replacement if applicable.
	Loose/worn connections on power switch	Remove back cover plate. Using pliers, move all three wires on the power switch over to the neighboring side, to the extra set of wire contacts.
	Defective micro-switch	Purchase replacement part or contact Support for help.
	Defective circuit board	Purchase replacement part or contact Support for help.
Leaks from gun/nozzle area	Loose connection	Ensure spray gun is fully tightened onto threaded end of the hose.
	Missing or worn gasket	Contact Support or go to xstreamclean.com to purchase replacement gaskets.

If your sprayer is experiencing trouble, see below or visit xstreamclean.com/troubleshoot for detailed instructions/videos on how to determine which part is not functioning.

To contact Technical Support, email info@xstreamclean.com or call +1 803.339.2500

TROUBLESHOOT

YOUR SPRAYER

PROBLEM	POSSIBLE REASON(S)	SOLUTION
Clogged pump / hose / gun / wand / nozzle.	Not rinsing tank / pump / hose / gun / nozzle(s) with water after use.	Rinse sprayer thoroughly with warm, soapy water after each use.
Dead battery	Defective charger	If the LED indicator lights do not turn on or only one red LED is on after being on charger for over 2 hours, test the charger using a multimeter. Replace if necessary.
	Damaged lithium cells	If the battery receives no reading from a multimeter, a replacement battery is needed.
Pump makes a sound when sprayer is on and output is limited	Clog in filter or nozzle	Check filter or nozzles for clog. Using warm water, thoroughly clean the components.
	Clog in pump	Open the pump and clean. Contact Support for assistance.
Leak from sprayer tank	Loose hose-pump connection	Open cover plate and identify the hose clamps. Use a flathead screwdriver to tighten.
	Damage on pump	Replace the pump.
	Damage on tank	Replace the sprayer tank.

WARRANTY & COVERAGE

WARRANTY COVERAGE

WESSOL, LLC warrants to the original purchaser that the X-Stream Clean® product will function as intended under normal use and consistent maintenance, subject to the limitations and exclusions detailed below. At the discretion of WESSOL, LLC, we will repair or replace any parts found to be defective in material or workmanship without charge, apart from shipping and handling costs, during the covered warranty period.

WARRANTY PERIOD

The warranty period will begin from the date of retail purchase and exist for one 1 year, regardless of when the unit is placed in service. The warranty period is not extended if we opt to repair or replace the product in question.

WARRANTY CLAIMS

WESSOL, LLC reserves the right to require the return of the defective product, proof of purchase, and established product registration to file a claim under this warranty.

If the product fails to function as intended **DO NOT RETURN IT TO THE STORE**, call our customer support hotline at **+1 803.339.2500**, email **info@xstreamclean.com** or submit a contact form at **xstreamclean.com/warranty**.

PRODUCT REGISTRATION

All sprayers purchased from X-Stream Clean® or an authorized distributor must be registered online to validate the warranty and allow for warranty claim processing. Follow the link below to register your sprayer.

EXCLUSIONS AND LIMITATIONS

WESSOL, LLC only warrants products purchased from authorized distributors. Products purchased from unauthorized resellers or distributors are not subject to warranty services. The limited warranty does not cover damages, loss, or injury resulting from transportation, storage, accident, improper use, neglect, modifications, normal wear, or operation not in accordance with the instruction manual.

WESSOL, LLC reserves the right to change the design or specifications of any product without obligation to modify previously produced units.

WARRANTY & COVERAGE

ANY IMPLIED WARRANTIES, INCLUDING THE IMPLIED WARRANTY OF MERCHANTABILITY AND FITNESS FOR CONSUMER USE, ARE LIMITED TO THE DURATION SPECIFIED ABOVE. WESSOL, LLC'S LIABILITY IS LIMITED SOLELY TO THE REPAIR OR REPLACEMENT OF THE NON-FUNCTIONING PRODUCT OR PART. WESSOL, LLC EXCLUDES LIABILITY UNDER THIS WARRANTY FOR ANY AND ALL INCIDENTAL AND CONSEQUENTIAL LOSS OR DAMAGE.

In no event shall WESSOL, LLC be liable for any incidental, special, consequential or punitive damages, or for any costs, attorney fees, expenses, losses or delays alleged to be as a consequence of any damage to, failure of, or defect in any product including, but not limited to, any claims for loss of profits. Some states do not allow limitations on how long an implied warranty lasts, or the exclusion or limitation of incidental or consequential damages, so these limitations or exclusions may not apply to you. This warranty gives you specific legal rights and you may have other rights which vary from state to state.

xstreamclean.com/warranty



xstreamclean.com
+1 803.339.2500
info@xstreamclean.com

© WESSOL, LLC

