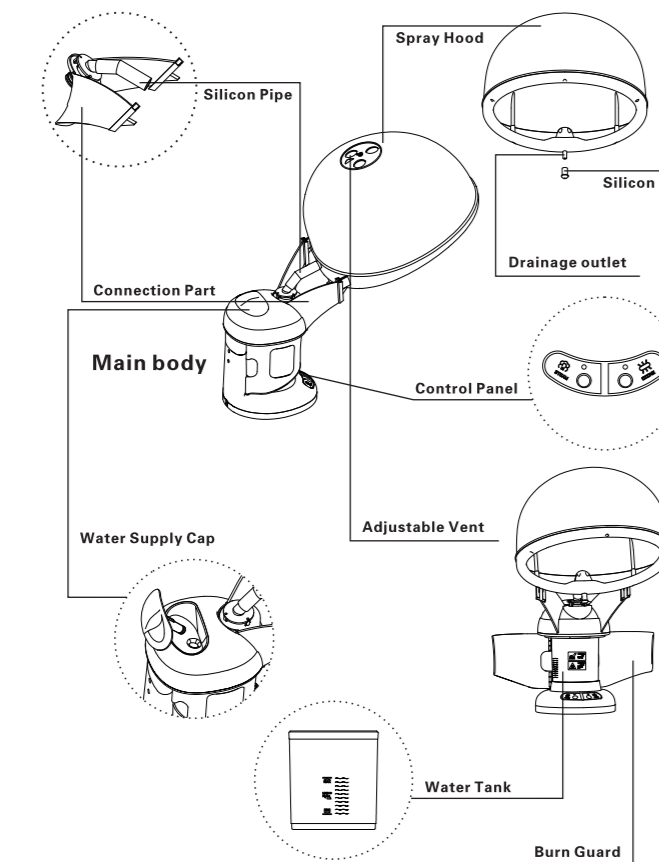


# Hair Steamer



10

## Name of Product Component

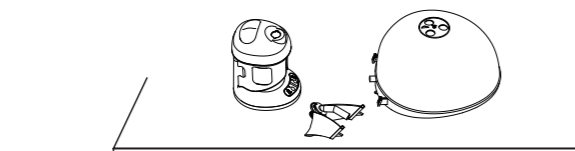


11

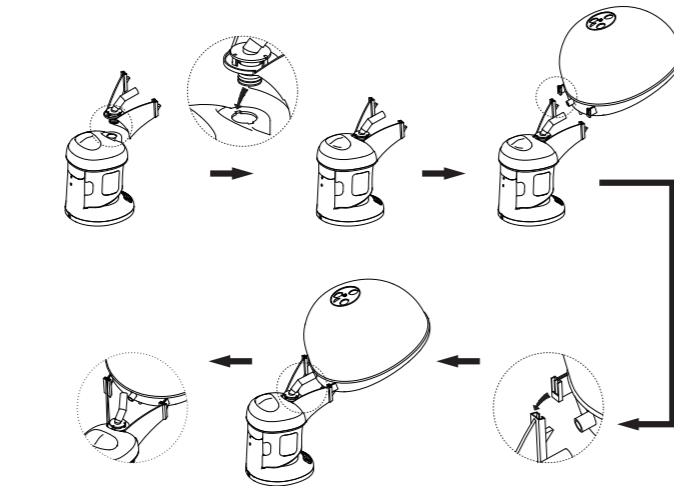
## Preparation

When you open the package at first time, you may see residual water in the water tank. This is the water left by quality inspection in the factory and it will not cause any hygienic issue.

Step 1: Place the main unit on a flat level surface, such as table.



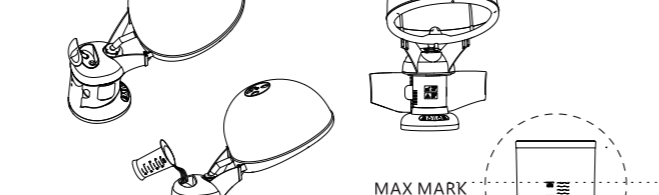
Step 2: Install the steam hood onto the unit, as per the below diagrams. Make sure the silicon pipe is securely connected.



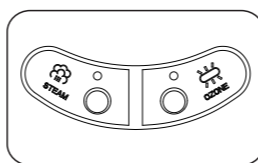
12

## Preparation

Step 3: Open the water supply cap, fill the water tank with water and close the water supply cap. Make sure the water level does not exceed the MAX mark.



Step 4: Turn on the ozone/ion function by pressing "OZONE" button, while red LED indicator will illuminate. The appliance will then create ozone and ion, thicken the steam. To start the steam and ozone functions at the same time, simply press the "OZONE" button at the standby mode.



4. Steam Care Guide  
 ① Put the hair steamer on a flat table. Adjust the height of your chair so that your head comfortably fit into the steam hood when you are seated.



② Put a dry towel on your shoulders to avoid water dripping on your clothes.  
 ③ Steam will be released about 5-7 minutes after appliance turns on. Fit your head into the hood now to enjoy the treatment.

④ The appliance will beep and automatically switch to standby mode for 3 minutes when water tank has insufficient amount of water, the LED indicators will flash instead of illuminating. If water is filled up within 3 minutes, the appliance will restart automatically. Otherwise, if the water is filled up after 3 minutes, user needs to press the "STEAM" button again to start the appliance.  
 For safety reason, the unit will not restart until water is refilled. Caution: Be aware of the hot temperature when refilling water, do not touch the water tank when observing the water level.

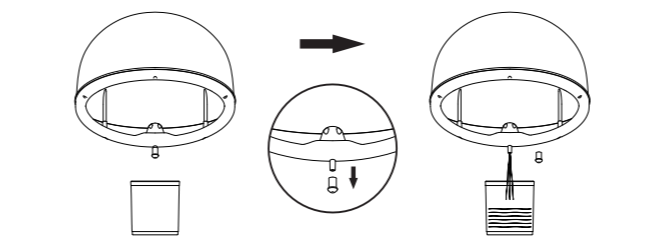
14

## After Use

● Caution: Be sure to discard the residual water from water tank and spray hood every time after use. Failure to do so may cause adhering of water stains or unusual odors.

1. Disconnect the plug from power outlet. Leave the appliance alone to cool for at least 10 minutes.

2. Remove the silicon cap for the drainage outlet on the bottom of the spray hood, let the waste water drain out and cover the outlet again with silicon cap.



## Warning regarding your hair and scalp

● Excessive use is detrimental to the hair and scalp.

● Initially, the appliance should only be used once a day, and no more than 15 minutes.

● Use once a week for normal hair, 2 or 3 times a week for damaged hair.

● If the scalp feels uncomfortable during use, please stop immediately.

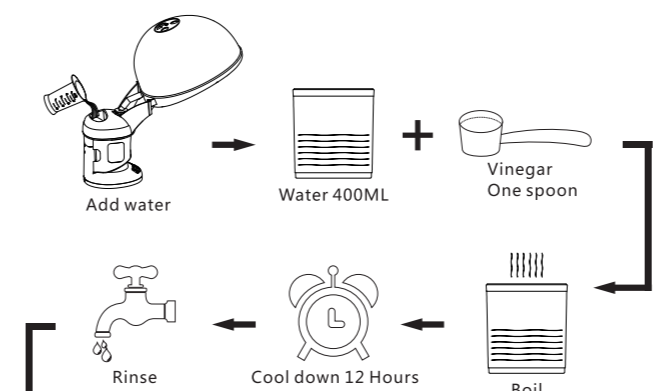
● Basic hair treatment is required after using the steamer, otherwise the moisture in your hair may evaporate easily, drying out your hair.

15

## Cleaning and Maintenance

1. Clean once a month. Remove the plug from the power outlet and wipe away any dust using a dry cloth.

2. If scale is noticed in the water tank, fill up the water tank with approximately 400ml water and one spoon of vinegar. Turn on the unit by pressing "STEAM" button to let the water boil, then turn off the appliance and let it cool off. After approximately 12 hours, discard the vinegar water and rinse the tank with clean water.



16

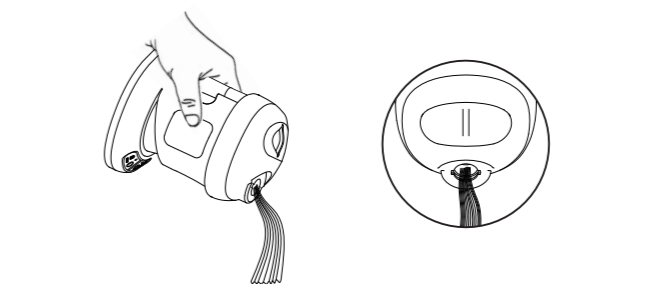
## After Use

● Caution: Be sure to discard the residual water from water tank every time after use. Failure to do so may cause adhering of water stains or unusual odors.

1. Leave the appliance alone to cool for at least 10 minutes.

2. Disconnect the plug from power outlet, remove the steam pipe or spray hood from the appliance, then pour out the water in the water tank through the steam pipe hole.

3. As picture indicates, hold the main unit so that your hands are not exposed to the hot water. Failure to do so may result in burns.



4. When the appliance is not using in a long term (more than several weeks), the water should be completely removed from water tank and steam pipe.

This symbol means that this product must be disposed of correctly as it can impact the environment if disposed of incorrectly.

This symbol means not suitable for use in a bathroom or shower.

17

## WARRANTY CARD

### Owner Warranty certificate

Product name: \_\_\_\_\_

Model: \_\_\_\_\_

Place of origin: \_\_\_\_\_

Warranty period: \_\_\_\_\_

Invoice number: \_\_\_\_\_

Date of purchase: \_\_\_\_\_

### Maintenance records

Repair date: \_\_\_\_\_ Date of inspection: \_\_\_\_\_

Failure, maintenance, handling of: \_\_\_\_\_

\_\_\_\_\_

\_\_\_\_\_

\_\_\_\_\_

\_\_\_\_\_

\_\_\_\_\_

\_\_\_\_\_

Beauty Hair Products Ltd 34 Lumina way, London, EN1 1FS  
 0208 365 1300 info@aphroditehair.co.uk www.aphroditehair.co.uk  
 Aphrodite is a registered Trade Mark.

© Beauty Hair Products Ltd Copyright 2019

18



## Table Top Steamer 2in1 Facial & Hair Steamer

