

# Catron IV

Wireless Self-powered 4 Button Switch



lumos  
CONTROLS  
A wisilica BRAND

## INSTALLATION AND QUICK START SHEET

### WARNING AND GUIDELINES!!!

Read and follow all safety instructions!!

**DO NOT INSTALL DAMAGED PRODUCT!** This product has been properly packed so that no parts should have been damaged during transit. Inspect to confirm. Any part damaged or broken during or after assembly should be replaced.

**WARNING : TURN THE POWER OFF AT THE CIRCUIT BREAKER BEFORE WIRING**

#### WARNING: Risk of Product Damage

- Electrostatic Discharge (ESD): ESD can damage product(s). Personal grounding equipment should be worn during all installation or servicing of the unit
- Do not stretch or use cable sets that are too short or are of insufficient length
- Do not modify the product
- Do not mount near gas or electric heater
- Do not change or alter internal wiring or installation circuitry
- Do not use product for anything other than its intended use

#### WARNING - Risk of Electric Shock

- Verify that supply voltage is correct by comparing it with the product information
- Make all electrical and grounded connections in accordance with the National Electrical Code (NEC) and any applicable local code requirements
- All wiring connections should be capped with UL approved recognized wire connectors
- All unused wiring must be capped

### Product Overview

Catron IV is a wireless self-powered 4 button switch that configures ON/OFF, intensity, and correlated color temperature of an individual or group of luminaires. It is a part of Lumos Controls ecosystem, which includes controllers, sensors, switches, modules, drivers, gateways, and analytical dashboards.



Do's	Don'ts
Installation should be performed by a qualified electrician	Don't use outdoors
Installation shall be in accordance with all applicable local and NEC codes	Avoid input voltage exceeding maximum rating
Turn the power OFF at circuit breakers before wiring	Don't disassemble the products
Observe the correct polarity of output terminal	—

Specifications	Min	Type	Max	Unit	Remarks
Power Supply	Electrodynamic harvesting				
Operating Temperature	-25	—	65	°C	—
Storage Temperature	-25	—	65	°C	—
Relative Humidity	0	—	95	%	Non-condensing
Dimensions of Double Rocker	—	25X50	—	mm	L x W For each of the 2 rockers
	—	0.98x1.96	—	in	
Dimensions of Frame Insert	—	55X55	—	mm	L x W
	—	2.16x2.16	—	in	
Dimensions of Central Plate	—	71x71	—	mm	L x W
	—	2.79x2.79	—	in	L x W
Dimensions of Frame	—	81x81	—	mm	L x W
	—	3.19x3.19	—	in	L x W

### Required tools & supplies



Screwdriver



Screws



Wall plates

## INSTALLATION INSTRUCTIONS

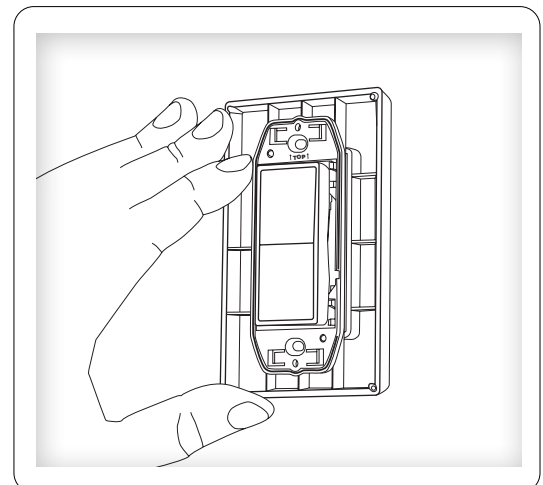
- Ensure optimal communications with other system components
- Pick a convenient location, perhaps near a door where occupants enter and exit
- Consider the construction materials in the space and remove the obstacles that may interfere with RF signals

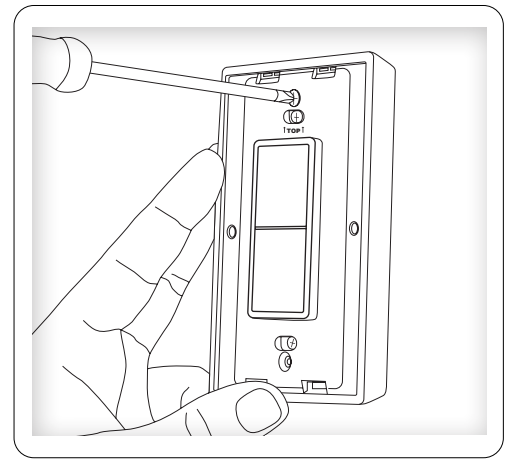
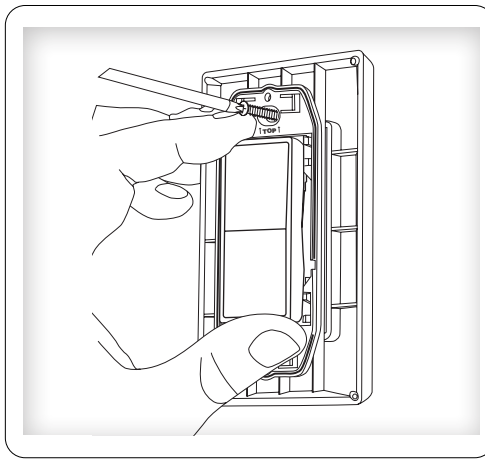
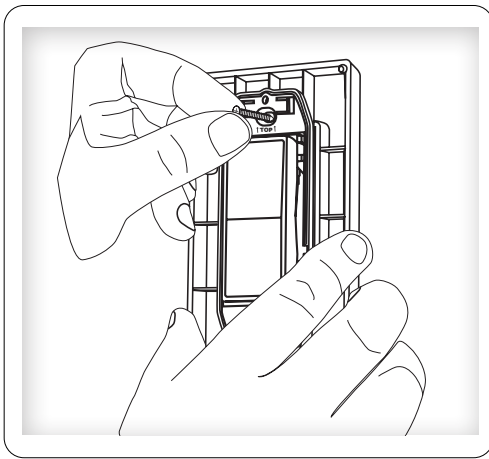
### Installation Steps

- Decide where you want to mount the rocker pad. The standard height for wall switches is 49" or 125 cm on center
- Remove the wall plate from the rocker pad assembly
- Decide which of the two installation options is appropriate

#### A. Surface Mounted Installation

- Using a level and a pencil, lightly mark 2 small dots to align the top edge of the mounting plate.
- Mark the mounting screw drill points.





- III. Drill holes for the wall anchors with a 3/16" drill bit and insert wall anchors.
- IV. Insert the top screw(s) loosely and level the back plate.
- V. Insert the bottom screw(s), and then hand tighten the top screw(s).
- VI. Insert the bottom screw(s), and then hand tighten the top screw(s).

NOTE: For proper assembly, make sure to align the "top" labels on the rocker pad and wall plate

#### B. Flush Mounted Installation

NOTE: When installing over an existing wall box make sure any bare electrical wires are capped. Where local building codes require the use of UL certified wall plates, please replace the provided wall plate by a certified wall plate made of plastic. Metal wall plates are not recommended, as they would reduce radio coverage!

- I) Remove the assembly screws which hold the wall plate, rocker pad, and mounting plan together
- II) Use a tool to carefully pry the rocker pad free from the back plate. The back plate is not used for this option.
- III) Mount the rocker pad over the existing wall box using the two screw holes

Note: For proper assembly make sure to align the 'top' labels on the rocker pad and wall plate.

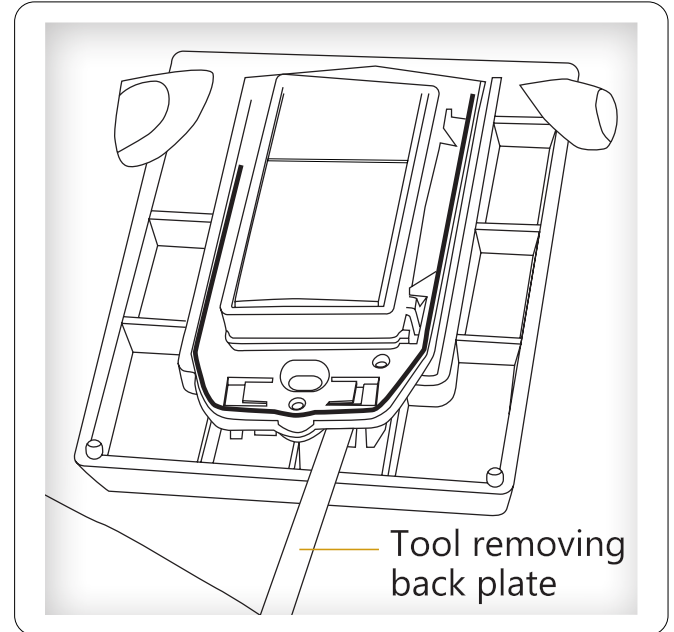
- IV) Attach the wall plate on top of the rocker pad using the two wall box screw holes.

- V) Insert the trim plate tabs in the bottom slots and then lightly flex the plate to insert top tabs

Tip: to remove the trim plate, use a flat-head screwdriver to depress the trim plate tabs using the 2 slots on the bottom of the wall plate. Alternatively, use a fingernail to press down along the top groove and flex the tabs out of the slots.

- VI) Click the rocker pad on and off to test the functioning

Note: to activate dimming, press and hold the top button to increase bottom button to decrease.



## Troubleshooting

Problem	Solution Checklist
The rocker pad does not generate a message	Verify the rocker pad is installed in the proper orientation
The linked device does not respond to wireless messages	<ul style="list-style-type: none"> <li>• Check for environment or range issues</li> <li>• Verify the devices is linked</li> <li>• Check the transceiver connection and the wiring of errors</li> <li>• Check if appropriate devices are linked</li> </ul>

## Warranty

5-year limited warranty

Please find warranty [terms and conditions](#)

Note: Specifications may change without notice

Actual performance can vary due to end-user environment and application

## Commissioning

Put the device in commissioning mode by long pressing on any of the buttons for 10 seconds, short press for 2 seconds, another long press for 10 seconds, and a short press for 1 second.

Choose the zone from the top right corner in the app to which you want to commission the device. Now, go to 'Devices' tab and click on the '+' button and choose the option 'Add device' and click on 'Tap here' and the device will be listed. Press '+' button corresponding to the device and the device will be successfully commissioned.

Follow the steps below to commission this switch by scanning the QR code;

Go to 'Devices' tab and click on the + button and choose the option 'Scan QR code'. Now, scan the QR code on the device with app and click on the option 'Add now'

You can choose whether the switch should act as 'Double Rocker' or 'Single Rocker'

Please visit [Help center](#) for more details